

DISTRICT I

P.O. Box 1980, Hobbs, NM 88241-1980

DISTRICT II

P.O. Box Drawer DD, Artesia, NM 88211-0719

DISTRICT III

1000 Rio Brazos Rd., Aztec, NM 87410

DISTRICT IV

P.O. Box 2088, Santa Fe, NM 87504-2088

State of New Mexico

Energy, Minerals and Natural Resources Department

Form C-101

Revised February 10, 1994

Instructions on back

Submit to Appropriate District Office

State Lease - 6 Copies

Fee Lease - 5 Copies

☐ AMENDED REPORT

## OIL CONSERVATION DIVISION

P.O. Box 2088

Santa Fe, New Mexico 87504-2088

## APPLICATION FOR PERMIT TO DRILL, RE-ENTER, DEEPEN, PLUGBACK, OR ADD A ZONE

<sup>1</sup> Operator Name and Address TEXACO EXPLORATION & PRODUCTION INC. P.O. Box 3109, Midland Texas 79702		<sup>2</sup> OGRID Number 022351
<sup>4</sup> Property Code 24758		<sup>3</sup> API Number 30-025-34662
<sup>5</sup> Property Name GREEN STAR 14 STATE COM		<sup>6</sup> Well No. 1

<sup>7</sup> Surface Location									
UI or lot no.	Section	Township	Range	Lot.Idn	Feet From The	North/South Line	Feet From The	East/West Line	County
N	14	16-S	32-E		660	SOUTH	2310	WEST	LEA

<sup>8</sup> Proposed Bottom Hole Location If Different From Surface									
UI or lot no.	Section	Township	Range	Lot.Idn	Feet From The	North/South Line	Feet From The	East/West Line	County
<sup>9</sup> Proposed Pool 1 ANDERSON RANCH MORROW					<sup>10</sup> Proposed Pool 2 ANDERSON RANCH WOLFCAMP				

<sup>11</sup> Work Type Code N	<sup>12</sup> WellType Code G	<sup>13</sup> Rotary or C.T. ROTARY	<sup>14</sup> Lease Type Code S	<sup>15</sup> Ground Level Elevation 4289'
<sup>16</sup> Multiple No	<sup>17</sup> Proposed Depth 12,615'	<sup>18</sup> Formation Morrow/Wolfcamp	<sup>19</sup> Contractor Nabors	<sup>20</sup> Spud Date 7/30/99

<sup>21</sup> Proposed Casing and Cement Program					
SIZE OF HOLE	SIZE OF CASING	WEIGHT PER FOOT	SETTING DEPTH	SACKS OF CEMENT	EST. TOP
14 3/4"	11 3/4"	42#	550'	350 Sacks	Surface
11"	8 5/8"	32#	4500'	2025 Sacks	Surface
7 7/8"	5 1/2"	17#	12615'	2125 Sacks	Surface

<sup>22</sup> Describe the proposed program. If this application is to DEEPEN or PLUG BACK give the data on the present productive zone and proposed new productive zone. Describe the blowout prevention program, if any. Use additional sheets if necessary.

## CEMENTING PROGRAM:

SURFACE CASING: 100 SACKS CLASS C w/2% GEL, 2% CC (13.5 PPG, 1.74 CF/S, 9.1 GW/S). F/B 250 SACKS CLASS C w/2% CC (14.8 PPG, 1.34 CF/S, 6.3 GW/S). CIRCULATE CEMENT TO SURFACE.

INTERMEDIATE CASING: 1525 SACKS 35/65 POZ CLASS H w/6% GEL, 5% SALT, 1/4# FC (12.4 PPG, 2.14 CF/S, 11.9 GW/S). F/B 500 SACKS CLASS H (15.6 PPG, 1.18 CF/S, 5.2 GW/S). CIRCULATE CEMENT TO SURFACE.

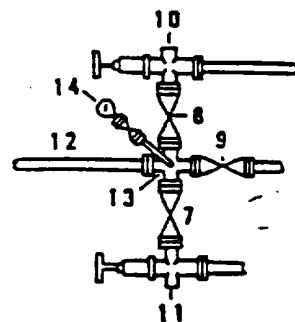
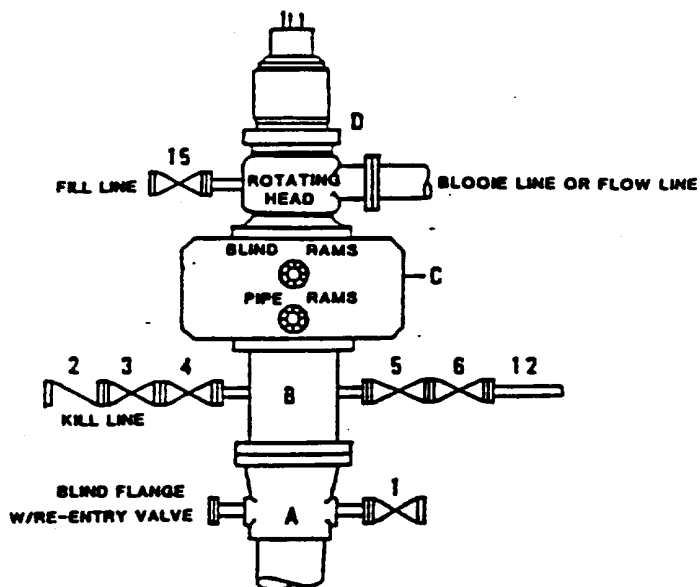
PRODUCTION CASING: 1100 SACKS 50/50 POZ CLASS H w/2% GEL, 5% SALT, 1/4# FC (14.2 PPG, 1.35 CF/S, 6.3 GW/S). F/B 625 SACKS 35/65 POZ CLASS H w/6% GEL, 5% SALT, 1/4# FC (12.4 PPG, 2.14 CF/S, 11.9 GW/S). F/B 400 SACKS 50/50 POZ CLASS H, w/2% GEL, 5% SALT, 1/4# FC (14.2 PPG, 1.35 CF/S, 6.3 GW/S). TOP OF CEMENT AT 3000'.

Permit Expires 1 Year From Approval  
Date Unless Drilling Underway

<sup>23</sup> I hereby certify that the rules and regulations of the Oil Conservation Division have been complied with and that the information given above is true and complete to the best of my knowledge and belief.		OIL CONSERVATION DIVISION	
Signature <i>A. Phil Ryan</i>		Approved By: ORIGINAL SIGNED BY CHRIS WILLIAMS DISTRICT I SUPERVISOR	
Printed Name <i>A. Phil Ryan</i>		Title:	
Title <i>Commission Coordinator</i>		Approval Date <b>JUL 22 1999</b>	Expiration Date:
Date 7/21/99	Telephone 688-4606	Conditions of Approval: Attached <input type="checkbox"/>	

**DRILLING CONTROL  
CONDITION II-B 3000 WP  
FOR AIR DRILLING OR  
WHERE NITROGEN OR AIR BLOWS ARE EXPECTED**

H<sub>2</sub>S TRIM REQUIRED  
YES \_\_\_\_\_ NO X



**DRILLING CONTROL**

**MATERIAL LIST - CONDITION II - B**

- |                |  |
|----------------|--|
| A              | Texaco Wellhead  |
| B              | 3000# W.P. drilling spool with a 2" minimum flanged outlet for kill line and 3" minimum flanged outlet for choke line.   |
| C              | 3000# W.P. Dual ram type preventer, hydraulic operated with 1" steel, 3000# W.P. control lines (where substructure height is adequate, 2 - 3000# W.P. single ram type preventers may be utilized). |
| D              | Rotating Head with fill up outlet and extended Bleed Line.   |
| 1,3,4,<br>7,8, | 2" minimum 3000# W.P. flanged full opening steel gate valve, or Halliburton Lo Torc Plug valve.  |
| 2              | 2" minimum 3000# W.P. back pressure valve.   |
| 5,6,9          | 3" minimum 3000# W.P. flanged full opening steel gate valve, or Halliburton Lo Torc Plug valve.  |
| 12             | 3" minimum schedule 80, Grade "B", seamless line pipe.   |
| 13             | 2" minimum x 3" minimum 3000# W.P. flanged cross.  |
| 10,11          | 2" minimum 3000# W.P. adjustable choke bodies.   |
| 14             | Cameron Mud Gauge or equivalent ( location optional in choke line).  |
| 15             | 2" minimum 3000# W.P. flanged or threaded full opening steel gate valve, or Halliburton Lo Torc Plug valve.  |



TEXACO, INC.  
MIDLAND DIVISION  
MIDLAND, TEXAS



SCALE	DATE	EST NO	ORD. NO.
DRAWN BY			
CHECKED BY			
APPROVED BY			

EXHIBIT C

ABOVE DATE DOES NOT  
INDICATE WHEN  
CONFIDENTIAL LOGS  
WILL BE RELEASED

ELF

2/13/2014

DISTRICT I  
P. O. Box 1980, Hobbs, NM 88240

DISTRICT II  
P. O. Drawer DD, Artesia, NM 88210

DISTRICT III  
1000 Rio Brazos Rd., Aztec, NM 87410

DISTRICT IV  
P. O. Box 2088, Santa Fe, NM 87504-2088

State of New Mexico  
Energy, Minerals and Natural Resources Department

Form C-102  
Revised February 10, 1994

Instructions on back

OIL CONSERVATION DIVISION  
PO Box 2088  
Santa Fe, NM 87504-2088

Submit to Appropriate District Office

State Lease-4 copies  
Fee Lease-3 copies

☐ AMENDED REPORT

WELL LOCATION AND ACREAGE DEDICATION PLAT

1 API Number		2 Pool Code		3 Pool Name Anderson Ranch Wolfcamp					
4 Property Code		5 Property Name Green Star 14 State Com						6 Well Number 1	
7 OGRID No. 22351		8 Operator Name TEXACO EXPLORATION & PRODUCTION, INC.						9 Elevation 4289'	
10 Surface Location									
UL or lot no. N	Section 14	Township 16-S	Range 32-E	Lot Idn	Feet from the 660'	North/South line South	Feet from the 2310'	East/West line West	7 County Lea
11 Bottom Hole Location If Different From Surface									
UL or lot no.	Section	Township	Range	Lot Idn	Feet from the	North/South line	Feet from the	East/West line	7 County
12 Dedicated Acres 40		13 Joint or Infill		14 Consolidation Code		15 Order No.			

NO ALLOWABLE WILL BE ASSIGNED TO THIS COMPLETION UNTIL ALL INTERESTS HAVE BEEN CONSOLIDATED  
OR A NON-STANDARD UNIT HAS BEEN APPROVED BY THE DIVISION.

	<b>16 OPERATOR CERTIFICATION</b> I hereby certify that the information contained herein is true and complete to the best of my knowledge and belief. Signature <i>Phil Ryan</i> Printed Name Phil Ryan Position Commission Coordinator Company Texaco Expl. & Prod. Inc. Date July 21, 1999
	<b>17 SURVEYOR CERTIFICATION</b> I hereby certify that the well location shown on this plat was plotted from field notes of actual surveys made by me or under my supervision, and that the same is true and correct to the best of my knowledge and belief. Date Surveyed July 20, 1999 Signature & Seal of Professional Surveyor <i>John S. Piper</i> Certificate No. 7254 John S. Piper Sheet

○ = Staked Location ● = Producing Well ✕ = Injection Well ◊ = Water Supply Well ★ = Plugged & Abandon Well  
⊙ = Found Section Corner, 2 or 3" Iron Pipe & GLO B.C. ○ = Found 1/4 Section Corner, 1" Iron Pipe & GLO B.C.

ADDITIONAL INFORMATION ON THE LOCATION

State Plane Coordinates Northing 697560.50		Easting 723969.88	
Latitude 32°54'58.290"		Longitude 103°44'17.464"	
Zone East	North American Datum 1983	Combined Grid Factor 0.9997417	Coordinate File Texmack6.cr5
Drawing File Grnstar1.dwg		Field Book Lea Co. FB. 19, Pg. 24	

DISTRICT I  
P. O. Box 1980, Hobbs, NM 88240

DISTRICT II  
P. O. Drawer DD, Artesia, NM 88210

DISTRICT III  
1000 Rio Brazos Rd., Aztec, NM 87410

DISTRICT IV  
P. O. Box 2088, Santa Fe, NM 87504-2088

State of New Mexico  
Energy, Minerals and Natural Resources Department

OIL CONSERVATION DIVISION  
PO Box 2088  
Santa Fe, NM 87504-2088

Form C-102  
Revised February 10, 1994

Instructions on back

Submit to Appropriate District Office

State Lease-4 copies  
Fee Lease-3 copies

☐ AMENDED REPORT

WELL LOCATION AND ACREAGE DEDICATION PLAT

<sup>1</sup> API Number 30-025-34662		<sup>2</sup> Pool Code 70240		<sup>3</sup> Pool Name Anderson Ranch Morrow					
<sup>4</sup> Property Code 24758		<sup>5</sup> Property Name Green Star 14 State Com				<sup>6</sup> Well Number 1			
<sup>7</sup> GRID No. 22351		<sup>8</sup> Operator Name TEXACO EXPLORATION & PRODUCTION, INC.				<sup>9</sup> Elevation 4289'			
<sup>10</sup> Surface Location									
UL or lot no. N	Section 14	Township 16-S	Range 32-E	Lot Idn	Feet from the 660'	North/South line South	Feet from the 2310'	East/West line West	<sup>7</sup> County Lea
<sup>11</sup> Bottom Hole Location If Different From Surface									
UL or lot no.	Section	Township	Range	Lot Idn	Feet from the	North/South line	Feet from the	East/West line	<sup>7</sup> County
<sup>12</sup> Dedicated Acres 320		<sup>13</sup> Joint or Infill		<sup>14</sup> Consolidation Code		<sup>15</sup> Order No.			

NO ALLOWABLE WILL BE ASSIGNED TO THIS COMPLETION UNTIL ALL INTERESTS HAVE BEEN CONSOLIDATED  
OR A NON-STANDARD UNIT HAS BEEN APPROVED BY THE DIVISION.

	<sup>16</sup> OPERATOR CERTIFICATION I hereby certify that the information contained herein is true and complete to the best of my knowledge and belief. Signature: <i>Phil Ryan</i> Printed Name: Phil Ryan Position: Commission Coordinator Company: Texaco Expl. & Prod. Inc. Date: July 21, 1999
	<sup>17</sup> SURVEYOR CERTIFICATION I hereby certify that the well location shown on this plat was plotted from field notes of actual surveys made by me or under my supervision, and that the same is true and correct to the best of my knowledge and belief. Date Surveyed: July 20, 1999 Signature & Seal of Professional Surveyor: <i>John S. Piper</i> Certificate No.: 7254 John S. Piper

○ = Staked Location ● = Producing Well ✕ = Injection Well ◇ = Water Supply Well ◆ = Plugged & Abandon Well  
⊙ = Found Section Corner, 2 or 3" Iron Pipe & GLO B.C. ○ = Found 1/4 Section Corner, 1" Iron Pipe & GLO B.C.

ADDITIONAL INFORMATION ON THE LOCATION

State Plane Coordinates			
Northing 697560.50		Easting 723969.88	
Latitude 32°54'58.290"		Longitude 103°44'17.464"	
Zone	North American Datum	Combined Grid Factor	Coordinate File
East	1983	0.9997417	Texmack6.cr5
Drawing File		Field Book	
Grnstar1.dwg		Lea Co. FB. 19, Pg. 24	

9/13/99  
3/3/2000  
ELF  
ABOVE DATE DOES NOT  
INDICATE WHEN  
CONFIDENTIAL LOGS  
WILL BE RELEASED