

DISTRICT I
P.O. Box 1980, Hobbs, NM 88241-1980

DISTRICT II
P.O. Drawer DD, Artesia, NM 88211-0719

DISTRICT III
1000 Rio Brazos Rd., Aztec, NM 87410

DISTRICT IV
P.O. Box 2088, Santa Fe, NM 87504-2088

State of New Mexico
Energy, Minerals and Natural Resources Department

Form C-102
Revised February 10, 1994
Submit to Appropriate District Office
State Lease - 4 Copies
Fee Lease - 3 Copies

OIL CONSERVATION DIVISION

P.O. Box 2088
Santa Fe, New Mexico 87504-2088

☐ AMENDED REPORT

WELL LOCATION AND ACREAGE DEDICATION PLAT

API Number 30-025-34683	Pool Code 96690	Pool Name Big Don Strawn, South
Property Code 004688	Property Name STATE "D"	Well Number 9
OGRID No. 004136	Operator Name CHARLES B. GILLESPIE, JR.	Elevation 3977

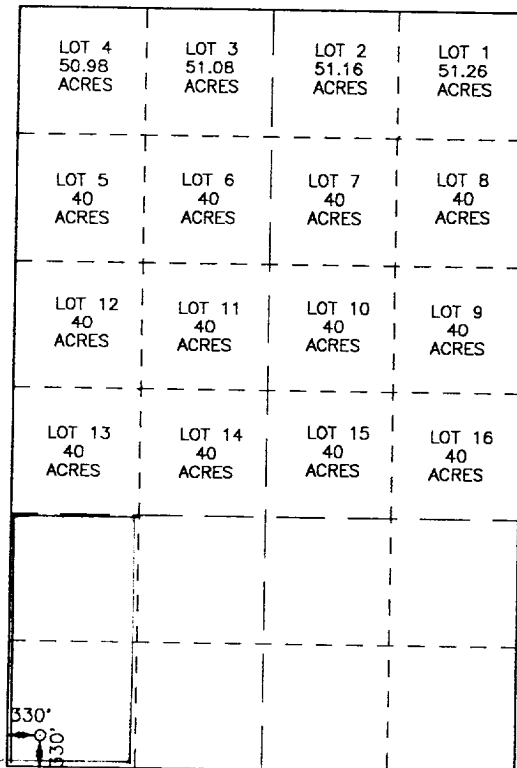
Surface Location

UL or lot No. 44	Section 1	Township 16 S	Range 35 E	Lot Idn	Feet from the 330	North/South line SOUTH	Feet from the 330	East/West line WEST	County LEA
----------------------------	--------------	------------------	---------------	---------	----------------------	---------------------------	----------------------	------------------------	---------------

Bottom Hole Location If Different From Surface

UL or lot No.	Section	Township	Range	Lot Idn	Feet from the	North/South line	Feet from the	East/West line	County
Dedicated Acres 80	Joint or Infill	Consolidation Code	Order No.						

NO ALLOWABLE WILL BE ASSIGNED TO THIS COMPLETION UNTIL ALL INTERESTS HAVE BEEN CONSOLIDATED
OR A NON-STANDARD UNIT HAS BEEN APPROVED BY THE DIVISION



NAD27
LAT. 32°56'40"
LONG. 103°25'05"

SCALE: 1"=2000'

OPERATOR CERTIFICATION

I hereby certify the the information
contained herein is true and complete to the
best of my knowledge and belief.

[Signature]
Signature

Mark Mladenka
Printed Name

Production Manager
Title

08/23/99
Date

SURVEYOR CERTIFICATION

I hereby certify that the well location shown
on this plat was plotted from field notes of
actual surveys made by me or under my
supervision, and that the same is true and
correct to the best of my belief.

Date Surveyed
Signature & Seal of
Professional Surveyor
3239

[Signature]
W.O. PROFESSIONAL 0663
JULP

Certificate No. JOHN W. WEST, 676
RONALD J. EIDSON, 3239