

DISTRICT I  
P. O. Box 1980  
Hobbs, NM 88241-1980

State of New Mexico  
Energy, Minerals, and Natural Resources Department

Form C-102  
Revised 02-10-94

Instructions on back

DISTRICT II  
P. O. Drawer DD  
Artesia, NM 88211-0719

OIL CONSERVATION DIVISION

P. O. Box 2088  
Santa Fe, New Mexico 87504-2088

Submit to the Appropriate  
District Office  
State Lease - 4 copies  
Fee Lease - 3 copies

DISTRICT III  
1000 Rio Brazos Rd.  
Aztec, NM 87410

DISTRICT IV  
P. O. Box 2088  
Santa Fe, NM 87507-2088

☐ AMENDED REPORT

WELL LOCATION AND ACREAGE DEDICATION PLAT

<sup>1</sup> API Number 30-025-34696	<sup>2</sup> Pool Code 56280	<sup>3</sup> Pool Name NORTHWEST SHOEBAR STRAWN
<sup>4</sup> Property Code 24636	<sup>5</sup> Property Name MAYFLY '14' STATE COM	<sup>6</sup> Well Number 3
<sup>7</sup> OGRID No. 5898	<sup>8</sup> Operator Name DAVID H. ARRINGTON OIL & GAS, INC.	<sup>9</sup> Elevation 3982'

<sup>10</sup> SURFACE LOCATION

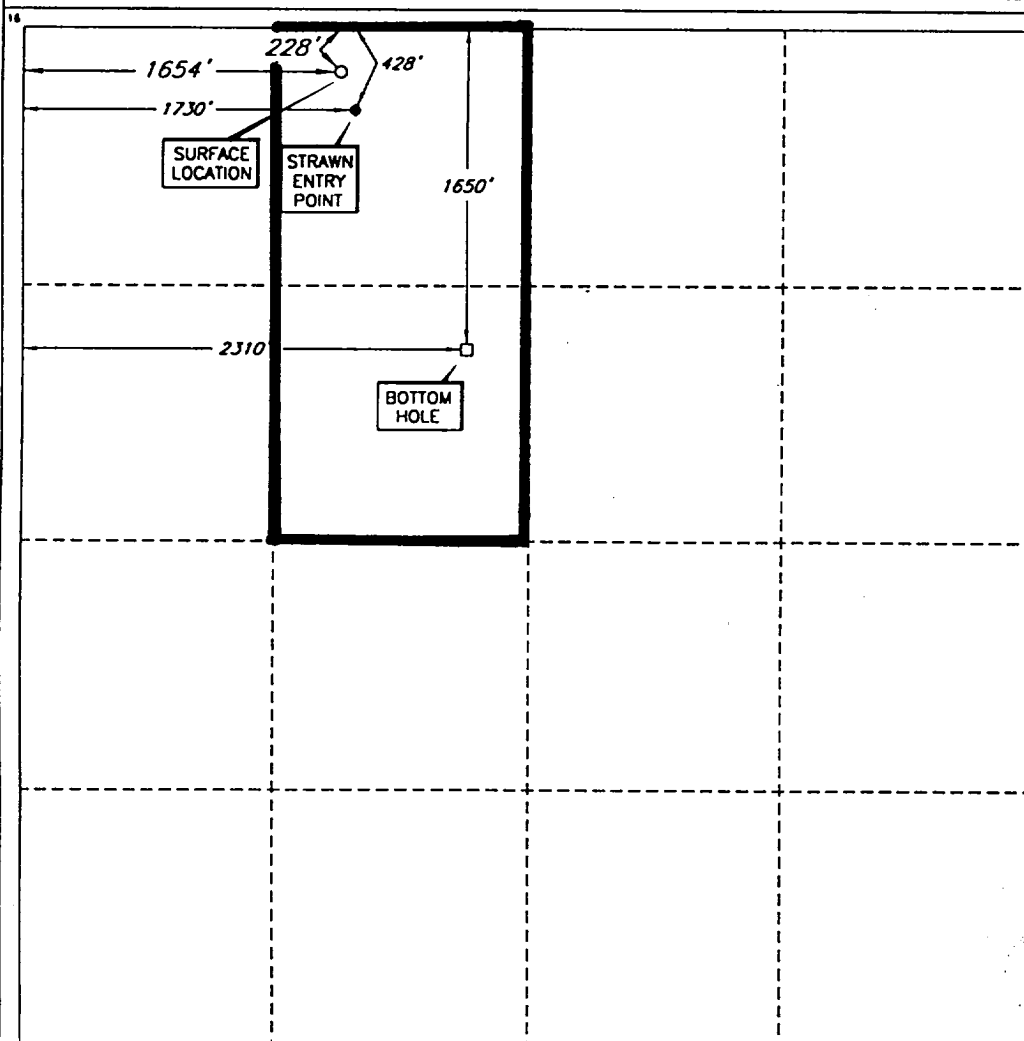
UL or lot no.	Section	Township	Range	Lot Ida	Feet from the	North/South line	Feet from the	East/West line	County
C	14	16 SOUTH	35 EAST, N.M.P.M.		228'	NORTH	1654'	WEST	LEA

"BOTTOM HOLE LOCATION IF DIFFERENT FROM SURFACE

UL or lot no.	Section	Township	Range	Lot Ida	Feet from the	North/South line	Feet from the	East/West line	County
F	14	16 SOUTH	35 EAST, N.M.P.M.		1650'	NORTH	2310'	WEST	LEA

<sup>12</sup> Dedicated Acres 80	<sup>13</sup> Joint or Infill	<sup>14</sup> Consolidation Code	<sup>15</sup> Order No.
-------------------------------------	-------------------------------	----------------------------------	-------------------------

NO ALLOWABLE WELL BE ASSIGNED TO THIS COMPLETION UNTIL ALL INTERESTS HAVE BEEN CONSOLIDATED OR A NON-STANDARD UNIT HAS BEEN APPROVED BY THE DIVISION



OPERATOR CERTIFICATION

I hereby certify that the information contained herein is true and complete to the best of my knowledge and belief.

Signature <i>Bruce Baker Jr.</i>
Printed Name Bruce Baker Jr.
Title Exploration Manager
Date 9-8-99

SURVEYOR CERTIFICATION

I hereby certify that the well location shown on this plat was plotted from field notes of actual surveys made by me or under my supervision, and that the same is true and correct to the best of my belief.

Date of Survey SEPTEMBER 2, 1999
Signature and Seal of Professional Surveyor V. LYNN BEZNER NO. 7920
Certification V. L. BEZNER R.P.S. #7920

ELF

27 12 24  
ABOVE DATE DOES NOT  
INDICATE WHEN  
CONFIDENTIAL LOGS  
WILL BE RELEASED

