

District I
PO Box 1980, Hobbs, NM 88241-1980

District II
811 South First, Artesia, NM 88210

District III
1000 Rio Brazos Rd., Aztec, NM 87410

District IV
2040 South Pacheco, Santa Fe, NM 87505

State of New Mexico
Energy, Minerals & Natural Resources Department

OIL CONSERVATION DIVISION
2040 South Pacheco
Santa Fe, NM 87505

Form C-101
Revised October 18, 1994
Instructions on back
Submit to Appropriate District Office
State Lease - 6 Copies
Fee Lease - 5 Copies

☐ AMENDED REPORT

APPLICATION FOR PERMIT TO DRILL, RE-ENTER, DEEPEN, PLUGBACK, OR ADD A ZONE

Operator Name and Address Nearburg Producing Company 3300 N A St., Bldg 2, Suite 120 Midland, TX 79705		OGRID Number 015742
		API Number 30 - 0 25-34725
Property Code 24352 24352	Property Name Rancho Verde 10 State Com	Well No. 2

Surface Location

UL or lot no.	Section	Township	Range	Lot Idn	Feet from the	North/South line	Feet from the	East/West Line	County
E	10	16S	32E		2230	North	930	West	Lea

Proposed Bottom Hole Location If Different From Surface

UL or lot no.	Section	Township	Range	Lot Idn	Feet from the	North/South line	Feet from the	East/West Line	County
Proposed Pool 1 Anderson Ranch - Wolfcamp, Southwest (96932)					Proposed Pool 2				

Work Type Code N	Well Type Code O	Cable/Rotary R	Lease Type Code S	Ground Level Elevation 4317
Multiple No	Proposed Depth 10100	Formation Wolfcamp	Contractor Peterson	Spud Date 10-22-99

Proposed Casing and Cement Program

Hole Size	Casing Size	Casing weight/foot	Setting Depth	Sacks of Cement	Estimated TOC
17-1/2"	13-3/8"	48#	400'	300 sxs	Circ to surface
11"	8-5/8"	32#	4,300'	1,300 sxs	Circ to surface
7-7/8"	5-1/2"	17#	10,000'	750 sxs	

Describe the proposed program. If this application is to DEEPEN or PLUG BACK give the data on the present productive zone and proposed new productive zone. Describe the blowout prevention program, if any. Use additional sheets if necessary.

Propose to drill the well to sufficient depth to evaluate the Wolfcamp formation. After reaching TD, logs will be run and casing set if the evaluation is positive. Perforate, test and stimulate as necessary to establish production.

Acreage dedication is 320 acres; W/2 of Section 10.

Permit Expires 1 Year From Approval
Date Unless Drilling Underway

I hereby certify that the information given above is true and complete to the best of my knowledge and belief.

Signature:

H. R. Willis

Printed name:

H. R. Willis

Title:

Drilling Superintendent

Date:

10-13-99

Phone:

915/686-8235

OIL CONSERVATION DIVISION

Approved By:

ORIGINAL SIGNED BY CHRIS WILLIAMS
DISTRICT I SUPERVISOR

Title:

Approval Date:

OCT 15 1999

Expiration Date:

Conditions of Approval:

Attached: ☐

DISTRICT I
P.O. Box 1980, Hobbs, NM 88241-1980

State of New Mexico
Energy, Minerals and Natural Resources Department

Form C-102
Revised February 10, 1994
Submit to Appropriate District Office
State Lease - 4 Copies
Fee Lease - 3 Copies

DISTRICT II
P.O. Drawer DD, Artesia, NM 88211-0719

DISTRICT III
1000 Rio Brazos Rd., Aztec, NM 87410

DISTRICT IV
P.O. BOX 2088, SANTA FE, N.M. 87504-2088

OIL CONSERVATION DIVISION

P.O. Box 2088
Santa Fe, New Mexico 87504-2088

☐ AMENDED REPORT

WELL LOCATION AND ACREAGE DEDICATION PLAT

API Number 30-D25-34725	Pool Code 96932	Pool Name Wildcat; Wolfcamp
Property Code 24352	Property Name RANCHO VERDE 10 STATE COM	Well Number 2
OGRID No. 015742	Operator Name NEARBURG PRODUCING COMPANY	Elevation 4317

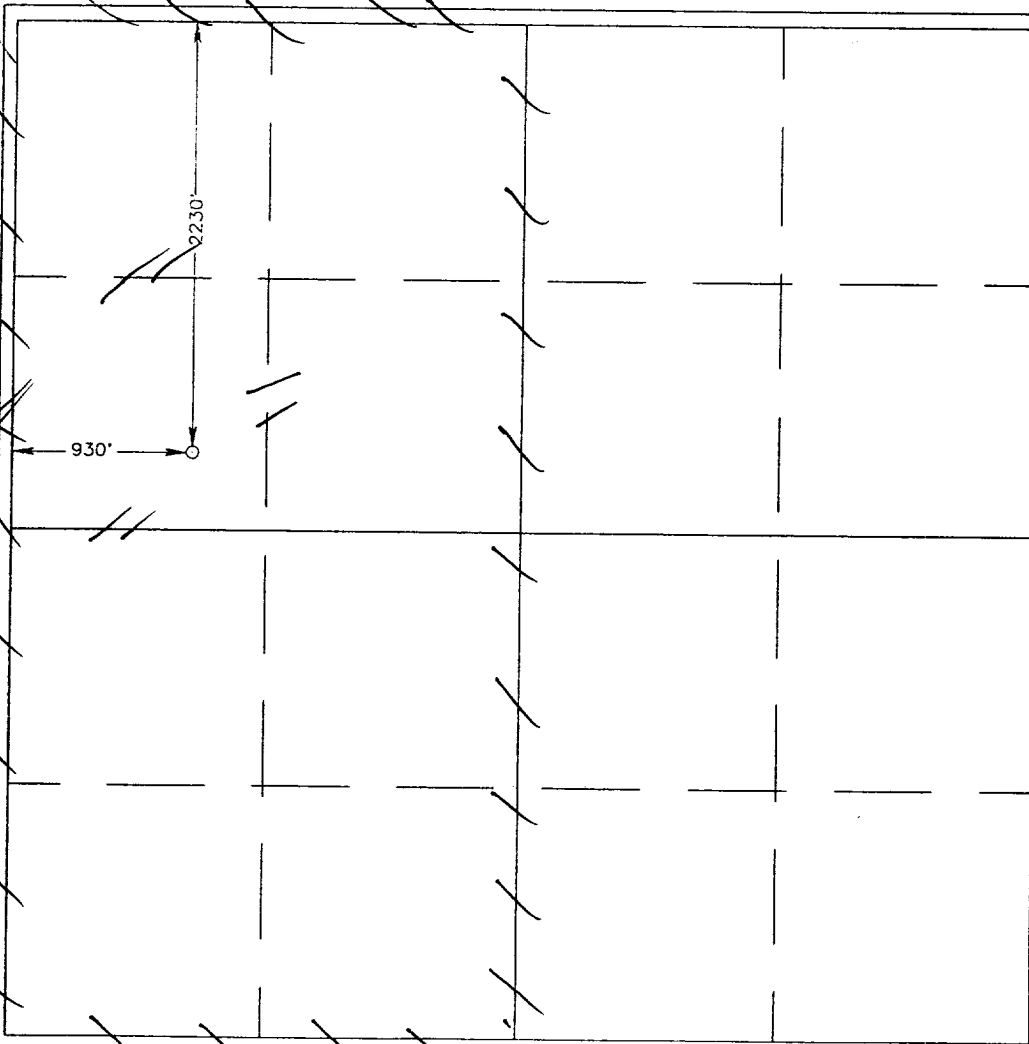
Surface Location

UL or lot No. E	Section 10	Township 16 S	Range 32 E	Lot Idn	Feet from the 2230	North/South line NORTH	Feet from the 930	East/West line WEST	County LEA
--------------------	---------------	------------------	---------------	---------	-----------------------	---------------------------	----------------------	------------------------	---------------

Bottom Hole Location If Different From Surface

UL or lot No.	Section	Township	Range	Lot Idn	Feet from the	North/South line	Feet from the	East/West line	County
Dedicated Acres 320.50	Joint or Infill N	Consolidation Code	Order No.						

NO ALLOWABLE WILL BE ASSIGNED TO THIS COMPLETION UNTIL ALL INTERESTS HAVE BEEN CONSOLIDATED
OR A NON-STANDARD UNIT HAS BEEN APPROVED BY THE DIVISION



OPERATOR CERTIFICATION

I hereby certify the the information
contained herein is true and complete to the
best of my knowledge and belief.

H. R. Willis
Signature

H. R. Willis

Printed Name

Drlg Superintendent

Title

August 25, 1999

Date

SURVEYOR CERTIFICATION

I hereby certify that the well location shown
on this plat was plotted from field notes of
actual surveys made by me or under my
supervision, and that the same is true and
correct to the best of my belief.

AUGUST 11, 1999

Date Surveyor _____ DMCC

Signature _____

Professional Surveyor _____

NEW MEXICO

3239

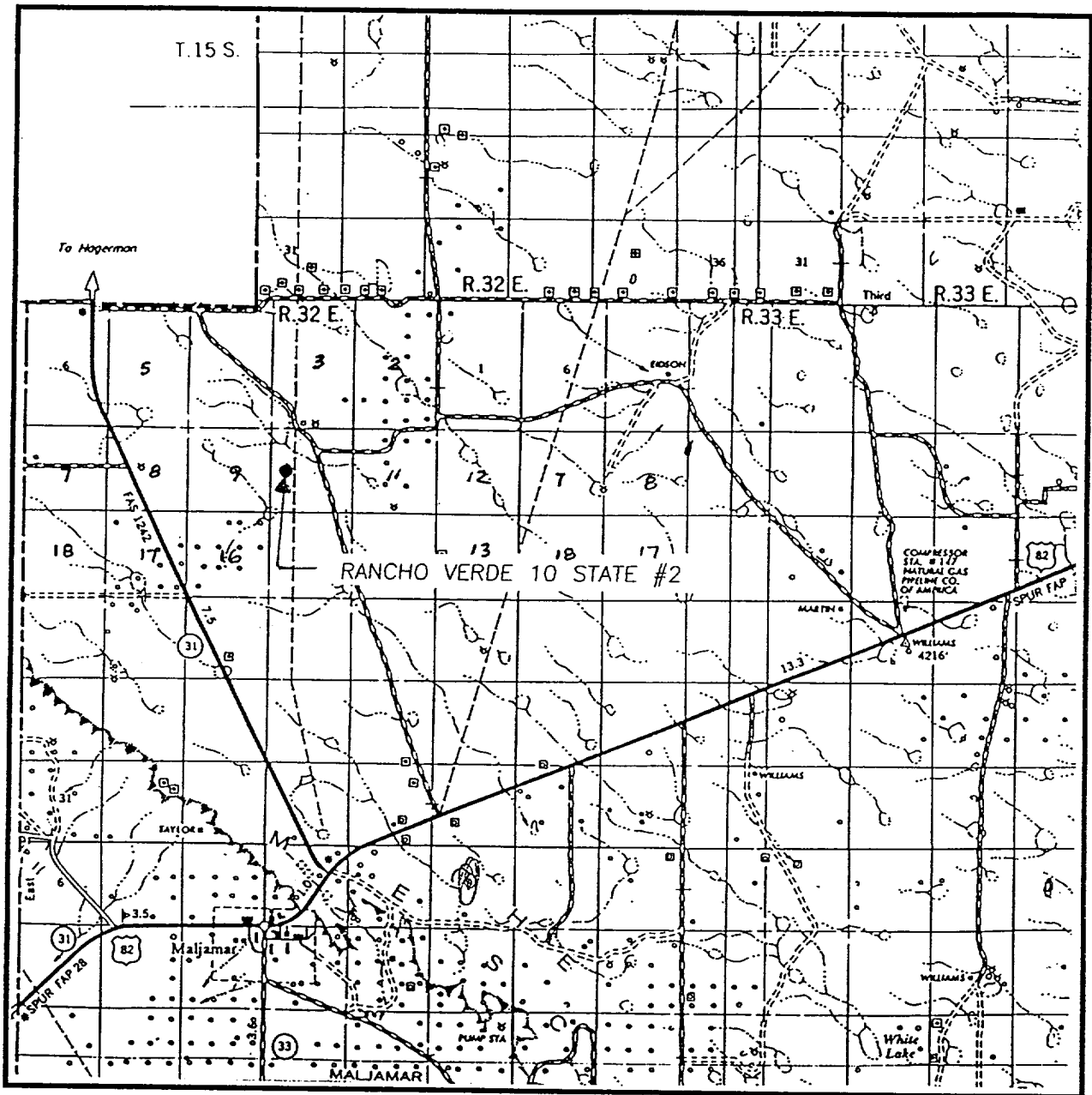
12641

12185

RONALD EIDSON

McDONALD

VICINITY MAP



SCALE: 1" = 2 MILES

SEC. 10 TWP. 16-S. RGE. 32-E

SURVEY N.M.P.M.

COUNTY LEA

DESCRIPTION 2230' FNL & 930' FWL

ELEVATION 4317

NEARBURG

OPERATOR PRODUCING COMPANY

LEASE RANCHO VERDE 10 STATE

JOHN WEST SURVEYING
HOBBS, NEW MEXICO
(505) 393-3117



CONTOUR INTERVAL:
MALJAMAR NE - 5'
BUCKEYE NW - 5'

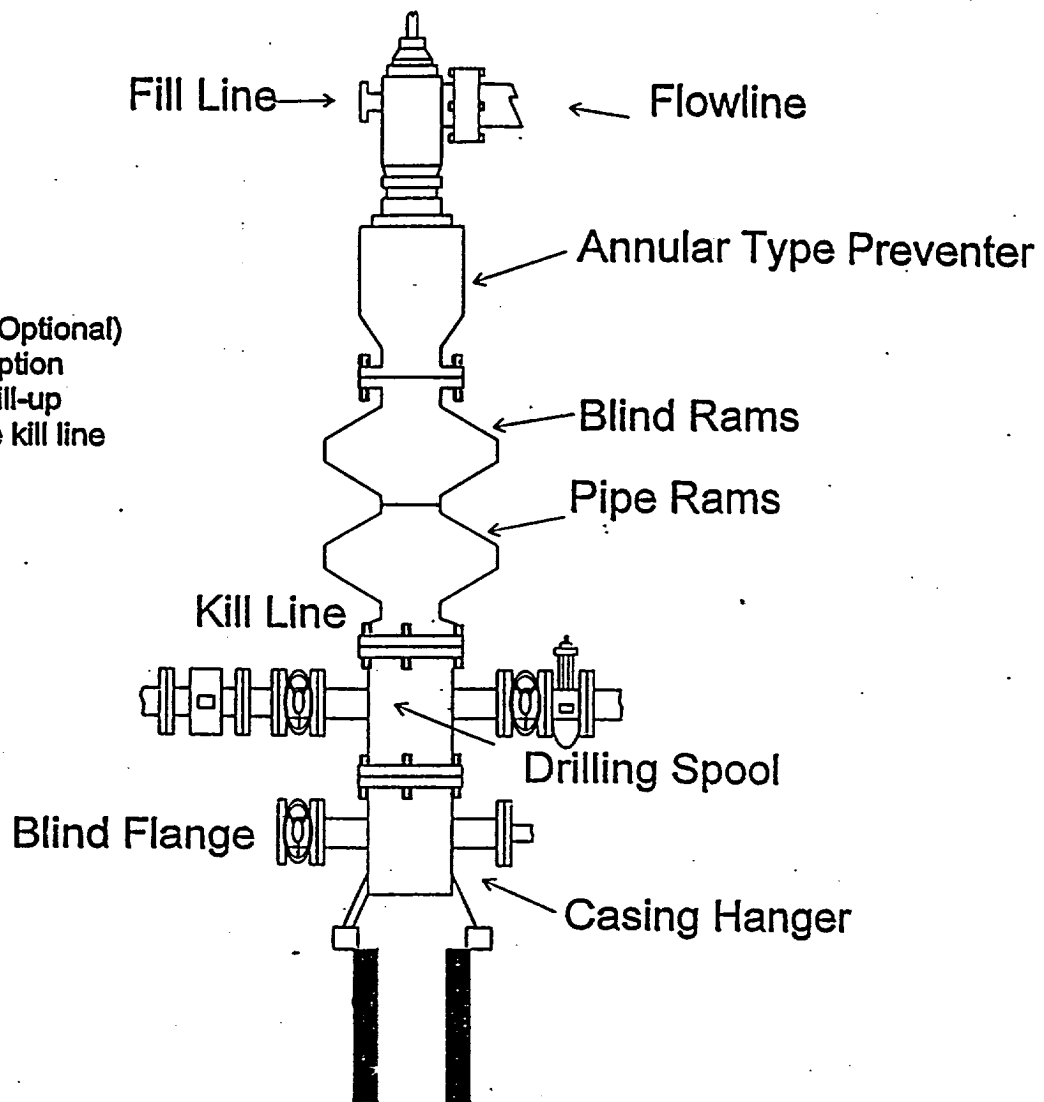
MALJAMAR NE, BUCKEYE NW, N.M.

**JOHN WEST SURVEYING
HOBBS, NEW MEXICO
(505) 393-3117**

ELF
ABOVE DATE DOES NOT
INDICATE WHEN
CONFIDENTIAL LOGS
WILL BE RELEASED

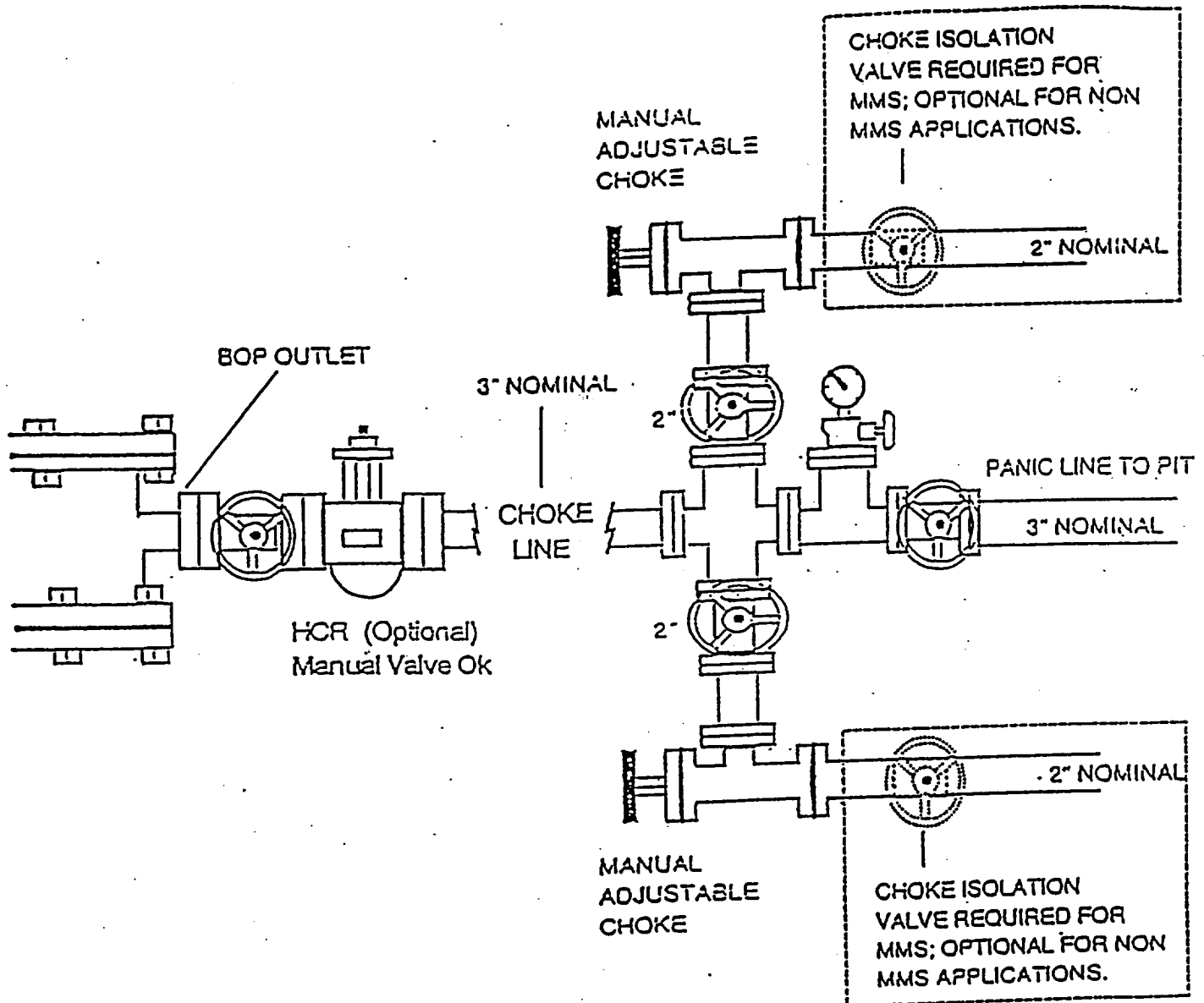
NEARBURG PRODUCING COMPANY
BOPE SCHEMATIC

Rotating Head (Optional)
Drilling Nipple option
must include a fill-up
line. Do not use kill line
for fill up.



1500 Series

NO ARBURG PRODUCING COMPANY
CHOKE MANIFOLD
5M SERVICE



ABOVE DATE DOES NOT
INDICATE WHEN
CONFIDENTIAL LOGS
WILL BE RELEASED

ELF

12/8/19