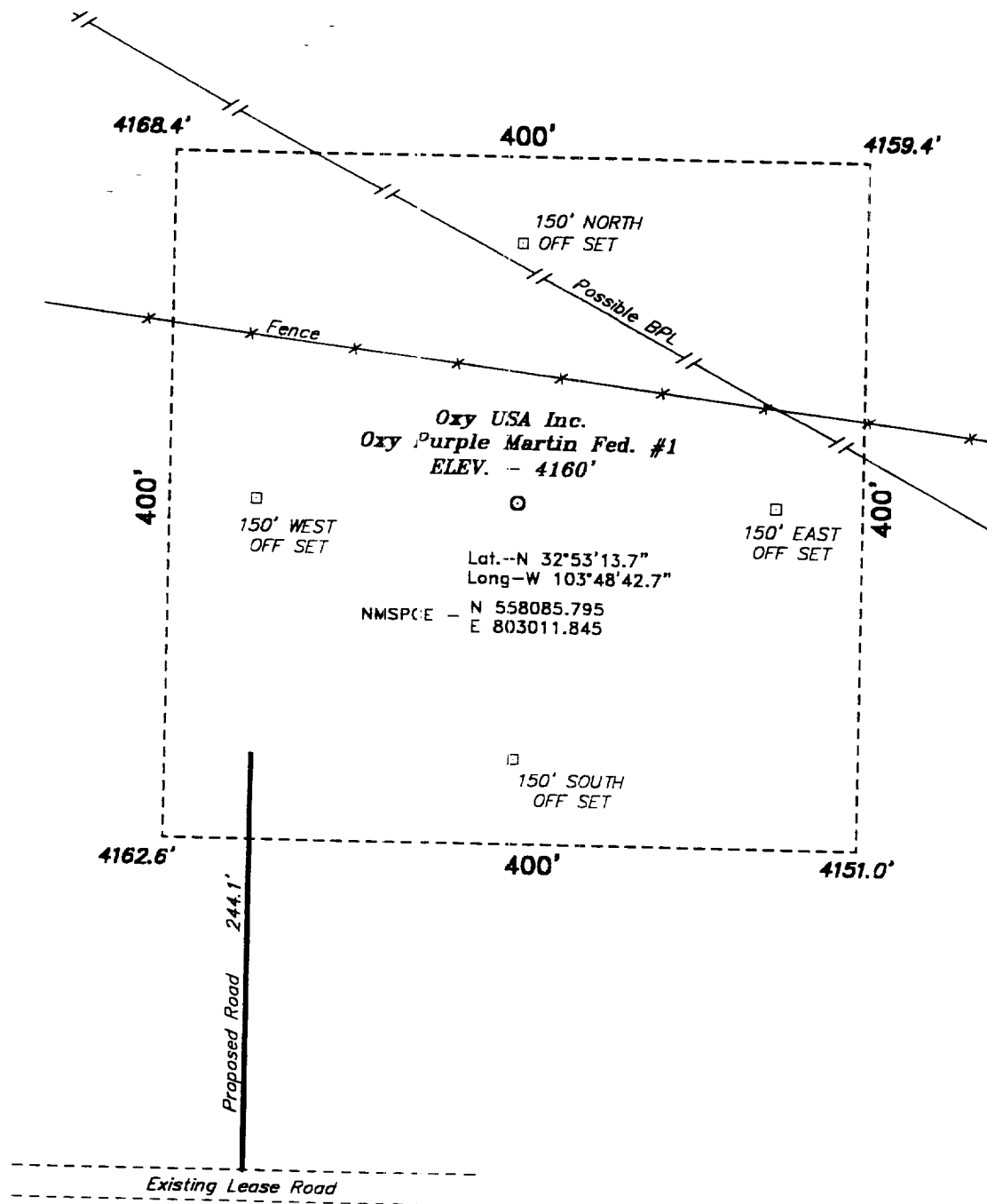
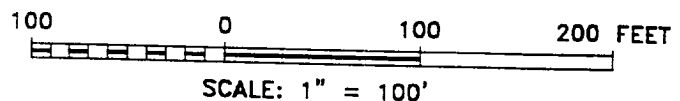


SECTION 30, TOWNSHIP 16 SOUTH, RANGE 32 EAST, N.M.P.M.,  
LEA COUNTY, NEW MEXICO.



Directions to Location:

ON U.S. HIGHWAY 82, 200 FEET EAST OF MILE MARKER 144, TURN NORTHWEST ON CO. RD. 1.2 MILE; THENCE 0.1 MILE NORTH; THENCE 0.2 MILE WEST; THENCE 0.8 MILE NORTHWEST; THENCE 0.3 MILE NORTH; THENCE 0.2 MILE EAST TO PROPOSED LEASE ROAD WHICH LIES 244.1 MILES SOUTH OF PROPOSED WELL LOCATION.



**Oxy USA Inc.**

REF: Oxy Purple Martin Fed. No. 1 / Well Pad Topo

THE OXY PURPLE MARTIN FED. No. 1 LOCATED 660' FROM THE SOUTH LINE AND 660' FROM THE WEST LINE OF SECTION 30, TOWNSHIP 16 SOUTH, RANGE 32 EAST, N.M.P.M., LEA COUNTY, NEW MEXICO.

BASIN SURVEYS P.O. BOX 1786--HOBBS, NEW MEXICO

Drawn By: K. GOAD

ite: 11-08-00