

## DISTRICT I

P.O. Box 1980, Hobbs, NM 88241-1980

## DISTRICT II

P.O. Box Drawer DD, Artesia, NM 88211-0719

## DISTRICT III

1000 Rio Brazos Rd., Aztec, NM 87410

## DISTRICT IV

P.O. Box 2088, Santa Fe, NM 87504-2088

State of New Mexico  
Energy, Minerals and Natural Resources Department

## OIL CONSERVATION DIVISION

P.O. Box 2088  
Santa Fe, New Mexico 87504-2088

Form C-101

Revised February 10, 1994

Instructions on back

Submit to Appropriate District Office

State Lease - 6 Copies

Fee Lease - 5 Copies

☐ AMENDED REPORT

## APPLICATION FOR PERMIT TO DRILL, RE-ENTER, DEEPEN, PLUGBACK, OR ADD A ZONE

<sup>1</sup> Operator Name and Address TEXACO EXPLORATION & PRODUCTION INC. P.O. Box 3109, Midland Texas 79702		<sup>2</sup> OGRID Number 022351
<sup>4</sup> Property Code 26245		<sup>5</sup> Property Name GREEN STAR '14' STATE
		<sup>3</sup> API Number 30-025-35100
		<sup>6</sup> Well No. 3

<sup>7</sup> Surface Location

Ul or lot no.	Section	Township	Range	Lot.Idn	Feet From The	North/South Line	Feet From The	East/West Line	County
L	14	16-S	32-E		2309	SOUTH	560'	WEST	LEA

<sup>8</sup> Proposed Bottom Hole Location If Different From Surface

Ul or lot no.	Section	Township	Range	Lot.Idn	Feet From The	North/South Line	Feet From The	East/West Line	County
<sup>9</sup> Proposed Pool 1 Wildcat; UNDESIGNATED, QUEEN 97027 Km					<sup>10</sup> Proposed Pool 2				

<sup>11</sup> Work Type Code N	<sup>12</sup> WellType Code O	<sup>13</sup> Rotary or C.T. ROTARY	<sup>14</sup> Lease Type Code S	<sup>15</sup> Ground Level Elevation 4295'
<sup>16</sup> Multiple No	<sup>17</sup> Proposed Depth 4200'	<sup>18</sup> Formation QUEEN	<sup>19</sup> Contractor	<sup>20</sup> Spud Date 7/31/00

<sup>21</sup> Proposed Casing and Cement Program

SIZE OF HOLE	SIZE OF CASING	WEIGHT PER FOOT	SETTING DEPTH	SACKS OF CEMENT	EST. TOP
11"	8 5/8"	24#	550'	210	CIRCULATE
7 7/8"	5 1/2"	15.5#	4200'	1060	CIRCULATE

<sup>22</sup> Describe the proposed program. If this application is to DEEPEN or PLUG BACK give the data on the present productive zone and proposed new productive zone. Describe the blowout prevention program, if any. Use additional sheets if necessary.

## CEMENTING PROGRAM:

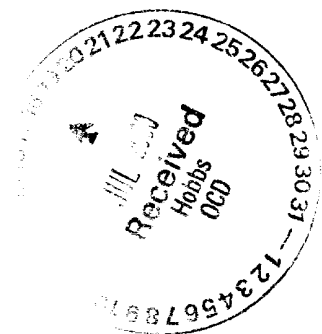
SURFACE CASING: 60 SACKS CLASS C w/2% GEL, 2% CaCl<sub>2</sub> (14.2 PPG, 1.50 CF/S, 7.45 GW/S). F/B 150 SACKS CLASS C w/2% CaCl<sub>2</sub> (14.8 PPG, 1.34 CF/S, 6.30 GW/S).

PRODUCTION CASING: 760 SACKS 35/65 POZ CLASS H w/6% GEL, 5% SALT, 1/4# FC (12.8 PPG, 1.94 CF/S, 10.46 GW/S). F/B 300 SACKS 50/50 POZ CLASS H w/2% GEL, 5% SALT, 1/4# FC (14.2 PPG, 1.35 CF/S, 6.30 GW/S).

Permit Expires 1 Year From Approval  
Date Unless Drilling Underway

<sup>23</sup> I hereby certify that the rules and regulations of the Oil Conservation Division have been complied with and that the information given above is true and complete to the best of my knowledge and belief.		OIL CONSERVATION DIVISION	
Signature <i>A. Phil Ryan</i>			
Printed Name <i>A. Phil Ryan</i>		Approved By: <i>[Signature]</i>	
Title <i>Commission Coordinator</i>		Title: <i>[Signature]</i>	
Date 7/17/00	Telephone 688-4606	Approval Date: <i>[Signature]</i>	Expiration Date: <i>7/31/2000</i>
		Conditions of Approval: Attached <input type="checkbox"/>	

*N NMP*



DISTRICT I  
P. O. Box 1980, Hobbs, NM 88240

DISTRICT II  
P. O. Drawer DD, Artesia, NM 88210

DISTRICT III  
1000 Rio Brazos Rd., Aztec, NM 87410

DISTRICT IV  
P. O. Box 2088, Santa Fe, NM 87504-2088

State of New Mexico  
Energy, Minerals and Natural Resources Department

OIL CONSERVATION DIVISION  
PO Box 2088  
Santa Fe, NM 87504-2088

Form C-102  
Revised February 10, 1994

Instructions on back

Submit to Appropriate District Office

State Lease-4 copies  
Fee Lease-3 copies

WELL LOCATION AND ACREAGE DEDICATION PLAT

☐ AMENDED REPORT

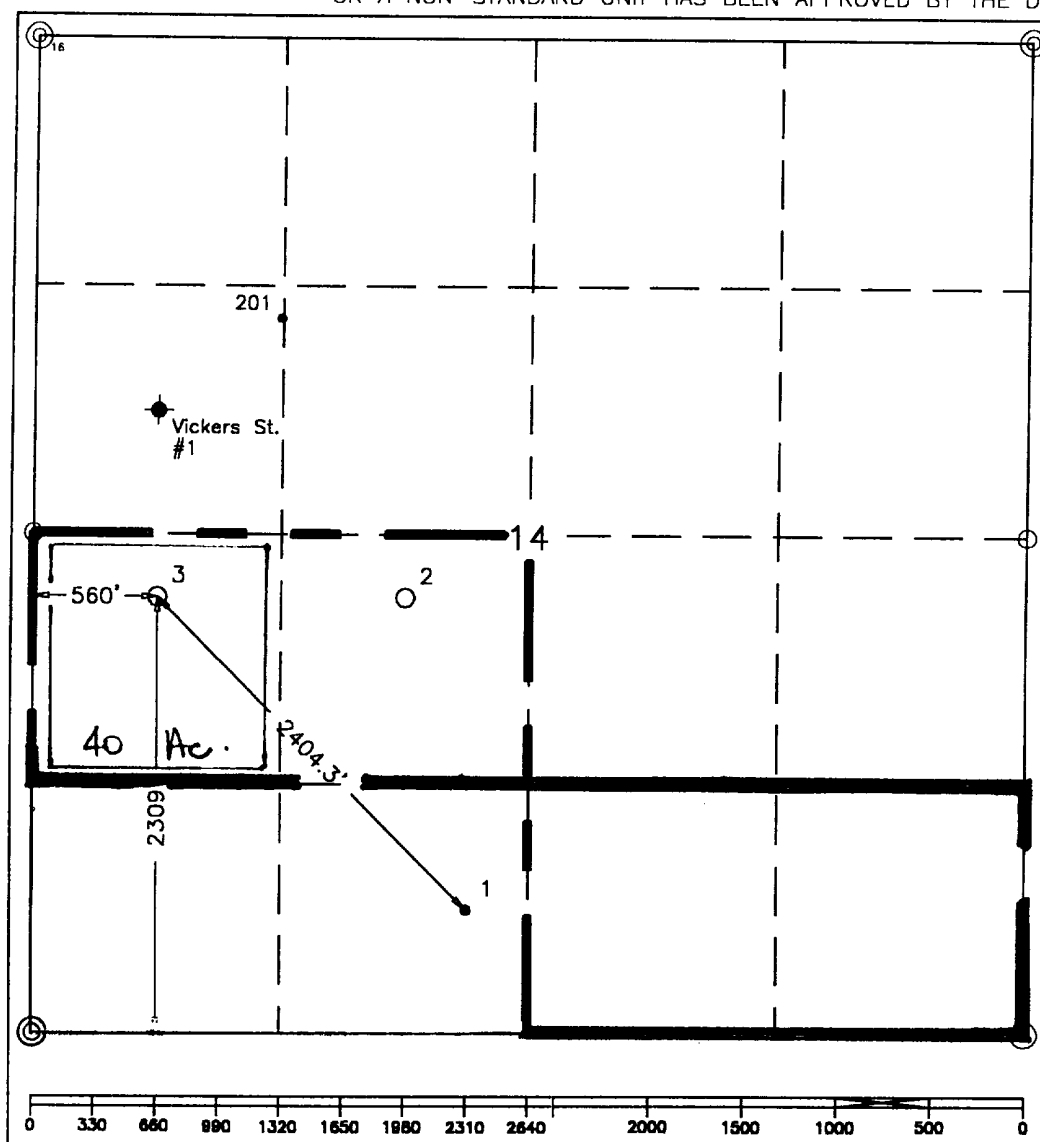
<sup>1</sup> API Number <b>30-025-35100</b>		<sup>2</sup> Pool Code <b>—</b>	<sup>3</sup> Pool Name <b>Wildcat; Undesignated, Queens</b>
<sup>4</sup> Property Code <b>26245</b>	<sup>5</sup> Property Name <b>Green Star 14 State</b>		<sup>6</sup> Well Number <b>3</b>
<sup>7</sup> GRID No. <b>22351</b>	<sup>8</sup> Operator Name <b>TEXACO EXPLORATION &amp; PRODUCTION, INC.</b>		<sup>9</sup> Elevation <b>4295'</b>

<sup>10</sup> Surface Location									
UL or lot no. <b>L</b>	Section <b>14</b>	Township <b>16-S</b>	Range <b>32-E</b>	Lot Idn	Feet from the <b>2309'</b>	North/South line <b>South</b>	Feet from the <b>560'</b>	East/West line <b>West</b>	<sup>7</sup> County <b>Lea</b>

<sup>11</sup> Bottom Hole Location If Different From Surface									
UL or lot no.	Section	Township	Range	Lot Idn	Feet from the	North/South line	Feet from the	East/West line	<sup>7</sup> County

<sup>12</sup> Dedicated Acres <b>40</b>	<sup>13</sup> Joint or Infill	<sup>14</sup> Consolidation Code	<sup>15</sup> Order No.
--	-------------------------------	----------------------------------	-------------------------

NO ALLOWABLE WILL BE ASSIGNED TO THIS COMPLETION UNTIL ALL INTERESTS HAVE BEEN CONSOLIDATED  
OR A NON-STANDARD UNIT HAS BEEN APPROVED BY THE DIVISION.

	<sup>16</sup> OPERATOR CERTIFICATION I hereby certify that the information contained herein is true and complete to the best of my knowledge and belief.
	Signature <i>A. Phil Ryan</i>
	Printed Name <b>A. Phil Ryan</b>
	Position <b>Commissioner Coordinator</b>
	Company <b>Texaco Expl. &amp; Prod. Inc.</b>
	Date <b>July 17, 2000</b>
	<sup>17</sup> SURVEYOR CERTIFICATION I hereby certify that the well location shown on this plat was plotted from field notes of actual surveys made by me or under my supervision, and that the same is true and correct to the best of my knowledge and belief.
	Date Surveyed <b>July 14, 2000</b>
	Signature & Seal of Professional Surveyor <i>John S. Piper</i>
	Certificate No. <b>7254 John S. Piper</b>
	Sheet

○ = Staked Location • = Producing Well = Injection Well ◇ = Water Supply Well ◆ = Plugged & Abandon Well  
⊙ = Found Section Corner, 2 or 3" Iron Pipe & GLO B.C. ○ = Found 1/4 Section Corner, 1" Iron Pipe & GLO B.C.

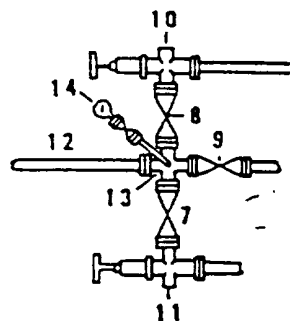
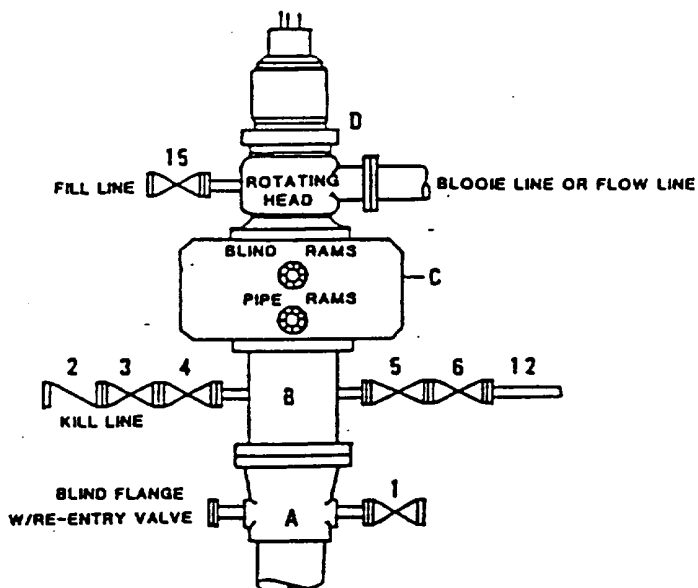
ADDITIONAL INFORMATION ON THE LOCATION

State Plane Coordinates			
Northing <b>699201.97 (1927=699136.92)</b>		Easting <b>722212.48 (1927=681034.57)</b>	
Latitude <b>32°55'14.629" (1927=32°55'14.202)</b>		Longitude <b>103°44'37.972" (1927=103°44'36.149)</b>	
Zone <b>North American Datum</b>	Combined Grid Factor <b>0.9997417</b>	Coordinate File <b>Texmack6.cr5</b>	
East <b>1983</b>			
Drawing File <b>Grnstar2.dwg</b>	Field Book <b>Lea Co #19, Pg. 79</b>		



**DRILLING CONTROL  
CONDITION II-B 3000 WP  
FOR AIR DRILLING OR  
WHERE NITROGEN OR AIR BLOWS ARE EXPECTED**

H<sub>2</sub>S TRIM REQUIRED  
YES \_\_\_\_\_ NO X



**DRILLING CONTROL**

**MATERIAL LIST - CONDITION II - B**

- |                |   |
|----------------|---|
| A              | Texaco Wellhead   |
| B              | 3000# W.P. drilling spool with a 2" minimum flanged outlet for kill line and 3" minimum flanged outlet for choke line.  |
| C              | 3000# W.P. Dual ram type preventer, hydraulic operated with 1" steel, 3000# W.P. control lines (where sub-structure height is adequate, 2 - 3000# W.P. single ram type preventers may be utilized). |
| D              | Rotating Head with fill up outlet and extended Bloode Line.   |
| 1,3,4,<br>7,8, | 2" minimum 3000# W.P. flanged full opening steel gate valve, or Halliburton Lo Torc Plug valve.   |
| 2              | 2" minimum 3000# W.P. back pressure valve.  |
| 5,6,9          | 1" minimum 3000# W.P. flanged full opening steel gate valve, or Halliburton Lo Torc Plug valve.   |
| 12             | 1" minimum schedule 80, Grade "B", seamless line pipe.  |
| 13             | 2" minimum x 3" minimum 3000# W.P. flanged cross.   |
| 10,11          | 2" minimum 3000# W.P. adjustable choke bodies.  |
| 14             | Cameron Mud Gauge or equivalent ( location optional in choke line).   |
| 15             | 2" minimum 3000# W.P. flanged or threaded full opening steel gate valve, or Halliburton Lo Torc Plug valve.   |



TEXACO, INC.  
MIDLAND DIVISION  
MIDLAND, TEXAS



SCALE	DATE	EST. NO.	DRG. NO.
DRAWN BY			
CHECKED BY			
APPROVED BY			

EXHIBIT C

