

DISTRICT I
P.O. Box 1980, Hobbs, NM 88241-1980

DISTRICT II
P.O. Drawer DD, Artesia, NM 88211-0719

DISTRICT III
1000 Rio Brazos Rd., Aztec, NM 87410

DISTRICT IV
P.O. BOX 2088, SANTA FE, N.M. 87504-2088

State of New Mexico
Energy, Minerals and Natural Resources Department

Form C-102
Revised February 10, 1994
Submit to Appropriate District Office
State Lease - 4 Copies
Fee Lease - 3 Copies

OIL CONSERVATION DIVISION

P.O. Box 2088
Santa Fe, New Mexico 87504-2088

☐ AMENDED REPORT

WELL LOCATION AND ACREAGE DEDICATION PLAT

API Number 30-025-35147	Pool Code <input checked="" type="checkbox"/>	Pool Name Wildcat Morrow
Property Code 26589	Property Name SHELBY 14	Well Number 1
OGRID No. 147179	Operator Name CHESAPEAKE OPERATING, INC.	Elevation 3880

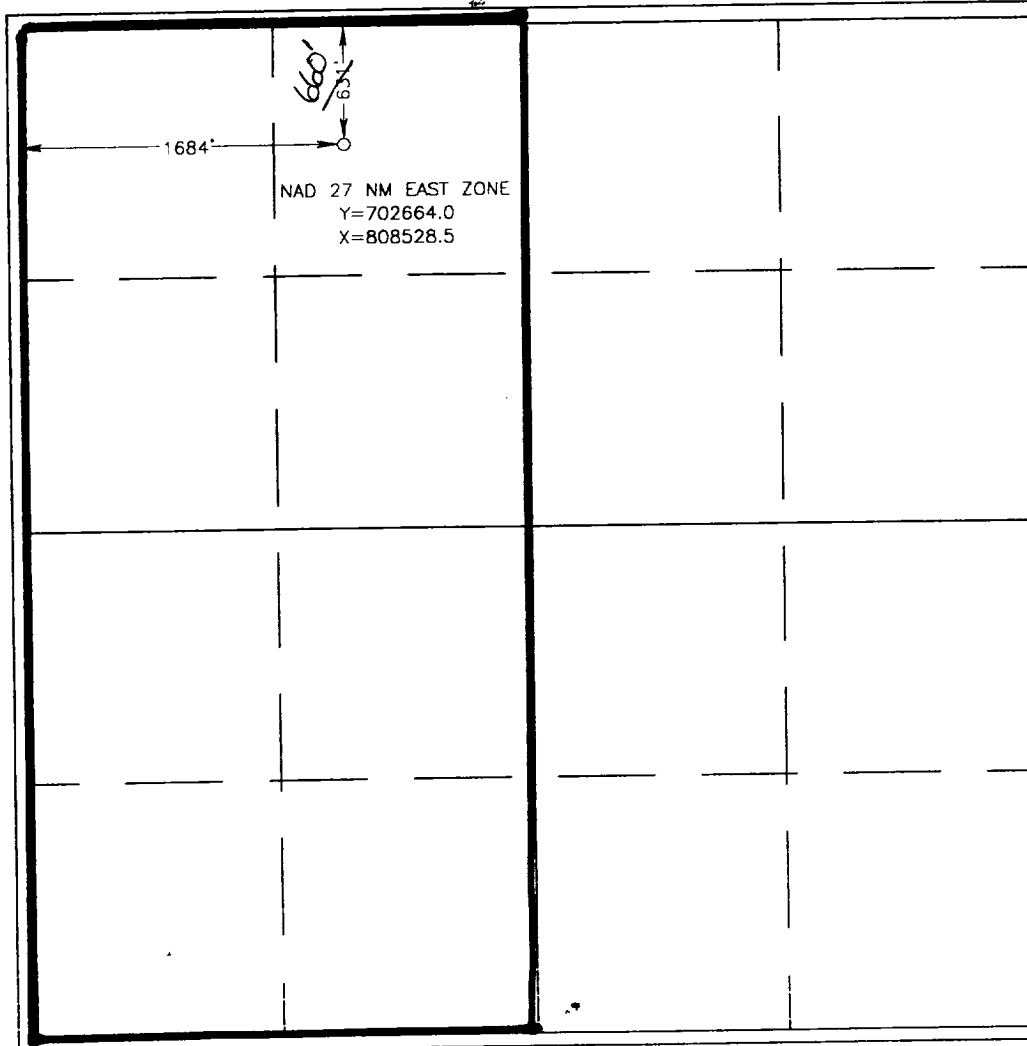
Surface Location

UL or lot No. C	Section 14	Township 16 S	Range 36 E	Lot Idn	Feet from the 631 660'	North/South line NORTH	Feet from the 1684	East/West line WEST	County LEA
---------------------------	----------------------	-------------------------	----------------------	---------	----------------------------------	----------------------------------	------------------------------	-------------------------------	----------------------

Bottom Hole Location If Different From Surface

UL or lot No.	Section	Township	Range	Lot Idn	Feet from the	North/South line	Feet from the	East/West line	County
Dedicated Acres 320	Joint or Infill	Consolidation Code	Order No.						

NO ALLOWABLE WILL BE ASSIGNED TO THIS COMPLETION UNTIL ALL INTERESTS HAVE BEEN CONSOLIDATED
OR A NON-STANDARD UNIT HAS BEEN APPROVED BY THE DIVISION



OPERATOR CERTIFICATION

I hereby certify the the information
contained herein is true and complete to the
best of my knowledge and belief.

Barbara J. Bale
Signature

Barbara J. Bale
Printed Name

Regulatory Analyst
Title

08/22/00
Date

SURVEYOR CERTIFICATION

I hereby certify that the well location shown
on this plat was plotted from field notes of
actual surveys made by me or under my
supervision and that the same is true and
correct to the best of my belief.

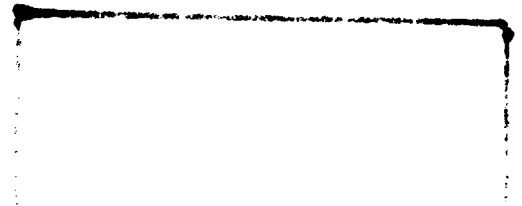
AUGUST 15, 2000

Date Surveyed DC

Signature & Seal of
Professional Surveyor

Gary Eidson 8/21/2000
00-11-1001

Certificate No. RONALD J. EIDSON 3239
GARY EIDSON 12641



RECEIVED
HODS
ODD