

District I  
P.O. Box 1980, Hobbs, NM 88241-1980  
District II  
1 S. 1st Street, Artesia, NM 88210-2834  
District III  
1000 Rio Brazos Rd., Aztec, NM 87410  
District IV  
2040 South Pacheco, Santa Fe, NM 87505

State of New Mexico  
Energy, Minerals & Natural Resources Department

OIL CONSERVATION DIVISION  
2040 South Pacheco  
Santa Fe, NM 87505

Form C-101  
Revised October 18, 1999  
Instructions on back  
Submit to Appropriate District Office  
State Lease - 6 Copies  
Fee Lease - 5 Copies

☐ AMENDED REPORT

APPLICATION FOR PERMIT TO DRILL, RE-ENTER, DEEPEN, PLUGBACK, OR ADD A ZONE

<sup>1</sup> Operator name and Address Phillips Petroleum Company 4001 Penbrook Street Odessa, TX 79762		<sup>2</sup> OGRID Number 017643
<sup>4</sup> Property Code 26695	<sup>5</sup> Property Name WEST MALJAMAR -7-	<sup>3</sup> API Number 30-0 25-35189
		<sup>6</sup> Well No. 1

<sup>7</sup> Surface Location

UL or lot no.	Section	Township	Range	Lot. Idn	Feet from the	North/South Line	Feet from the	East/West line	County
J	7	17-S	33-E		1669	SOUTH	1422	EAST	LEA

<sup>8</sup> Proposed Bottom Hole Location If Different From Surface

UL or lot no.	Section	Township	Range	Lot. Idn	Feet from the	North/South Line	Feet from the	East/West line	County
<sup>9</sup> Proposed Pool 1 WILDCAT (ATOKA-MORROW)					<sup>10</sup> Proposed Pool 2 WILDCAT (WOLFCAMP)				

<sup>11</sup> Work Type Code N	<sup>12</sup> Well Type Code G	<sup>13</sup> Cable/Rotary R	<sup>14</sup> Lease Type Code S	<sup>15</sup> Ground Level Elevation 4217'
<sup>16</sup> Multiple NO	<sup>17</sup> Proposed Depth 13,700'	<sup>18</sup> Formation MISSISSIPPIAN	<sup>19</sup> Contractor UNKNOWN	<sup>20</sup> Spud Date UPON APPROVAL FROM NMOCD

<sup>21</sup> Proposed Casing and Cement Program

Hole Size	Casing Size	Casing weight/foot	Setting Depth	Sacks of Cement	Estimated TOC
17-1/2"	13-3/8"	48#	400'	500 SX PREM+	SURFACE
12-1/4"	9-5/8"	40#	4600'	700 SX CL "C"	SURFACE
8-3/4"	7"	26# & 29#	11,000'	250SX50/50POZ A	9300'
6"	4-1/2" LINER	13.5#	10800-13700'	200 SX SUPER "H"	10800'

<sup>22</sup> Describe the proposed program. If this application is to DEEPEN or PLUG BACK give the data on the present productive zone and proposed new productive zone. Describe the blowout prevention program, if any. Use additional sheets if necessary.

BOP SCHEMATIC ATTACHED

Permit Expires 1 Year From Approval  
Date Unless Previously Extended

<sup>23</sup> I hereby certify that the information given above is true and complete to the best of my knowledge and belief.

Signature:

*L. M. Sanders*

Printed name: L. M. SANDERS

Title: SUPV., REGULATION/PRORATION

OIL CONSERVATION DIVISION

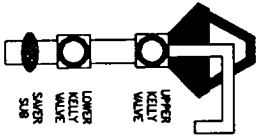
Approved by:

Title:

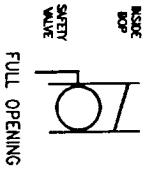
Approval Date: 3/2000

Expiration Date:

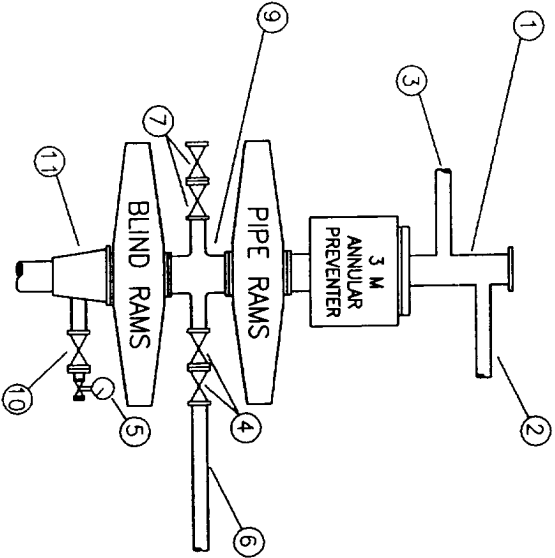
# DRILLSTRING CONTROL DEVICES



## ON DRILL FLOOR



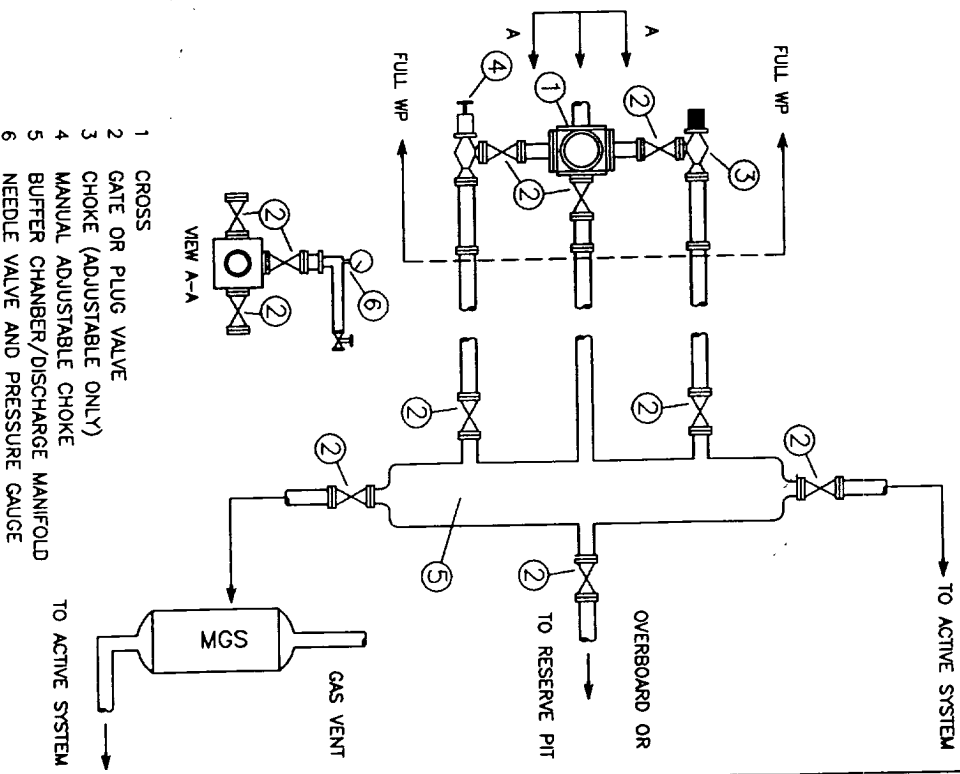
## BOP STACK



- 1 BELL NIPPLE
- 2 FLOW LINE
- 3 FILL-UP LINE
- 4 3" FE PRESSURE-OPERATED CHOKE LINE VALVE
- 5 PRESSURE GAUGE
- 6 3" CHOKE LINE TO CHOKE MANIFOLD
- 7 3" FE GATE OR PLUG VALVES
- 8 2" KILL LINE
- 9 DRILLING SPOOL
- 10 2" SE OR FE GATE VALVE WITH NEEDLE VALVE
- 11 CASING HEAD HOUSING

## CHOKE MANIFOLD

### DISCHARGE MANIFOLD OPTIONAL FOR LAND RIGS



- 1 CROSS
- 2 GATE OR PLUG VALVE
- 3 CHOKE (ADJUSTABLE ONLY)
- 4 MANUAL ADJUSTABLE CHOKE
- 5 BUFFER CHAMBER/DISCHARGE MANIFOLD
- 6 NEEDLE VALVE AND PRESSURE GAUGE

DISTRICT I  
1625 N. French Dr., Hobbs, NM 88240

State of New Mexico  
Energy, Minerals & Natural Resources Department

Form C-102  
Revised August 15, 2000  
Submit to Appropriate District Office  
State Lease - 4 Copies  
Fee Lease - 3 Copies

DISTRICT II  
P.O. Drawer DD, Artesia, NM 88211-0719

DISTRICT III  
1000 E. Bruce Rd., Artesia, NM 87410

DISTRICT IV  
P.O. BOX 2088, SANTA FE, N.M. 87504-2088

OIL CONSERVATION DIVISION  
2040 South Pacheco  
Santa Fe, NM 87505

☐ AMENDED REPORT

WELL LOCATION AND ACREAGE DEDICATION PLAT

API Number 30-025-	Pool Code	Pool Name Wildcat (Wolfcamp)
Property Code	Property Name WEST MALJAMAR "7"	Well Number 1
OGED No. 017643	Operator Name PHILLIPS PETROLEUM COMPANY	Elevation 4217

Surface Location

UL or Lot No. J	Section 7	Township 17 S	Range 33 E	Lot Idn	Feet from the 1669	North/South line SOUTH	Feet from the 1422	East/West line EAST	County LEA
--------------------	--------------	------------------	---------------	---------	-----------------------	---------------------------	-----------------------	------------------------	---------------

Bottom Hole Location If Different From Surface

UL or Lot No.	Section	Township	Range	Lot Idn	Feet from the	North/South line	Feet from the	East/West line	County
Dedicated Acres	Joint or Infill	Consolidation Code	Order No.						

NO ALLOWABLE WILL BE ASSIGNED TO THIS COMPLETION UNTIL ALL INTERESTS HAVE BEEN CONSOLIDATED OR A NON-STANDARD UNIT HAS BEEN APPROVED BY THE DIVISION

Found Old Stone Mound with 1/2" Iron Rod N 89°29'38" E - 2682.8' W - 2641.8'	Found 2" Brass Cap marked 1/4, 6-7 N 89°25'40" E - 2640.1' W - 2639.9'	OPERATOR CERTIFICATION I hereby certify the the information contained herein is true and complete to the best of my knowledge and belief.  Signature L. M. Sanders Printed Name Supv., Regulation/ Title September 28, 2000 Date	
PHILLIPS (100%)	TEXACO (100%)	TEXACO (100%)	SURVEYOR CERTIFICATION I hereby certify that the well location shown on this plat was plotted from field notes of actual surveys made by me or under my supervision and that the same is true and correct to the best of my belief.  August 31, 2000 Date Surveyed Signature & Seal of Professional Surveyor W.O. Num. 2000-0638 Certificate No. MACON McDONALD 12185
PHILLIPS (100%)	PHILLIPS (100%)	PHILLIPS (100%)	
PHILLIPS (100%)	PHILLIPS (100%)	PHILLIPS (100%)	
Found 2" Brass Cap marked 1/4, 12-13 N 89°27'53" W - 2694.4'	Found 2" Brass Cap marked 1/4, 12-13 N 89°27'26" W - 2640.9'		

SELF  
\_\_\_\_\_  
ABOVE DATE DOES NOT  
INDICATE WHEN  
CONFIDENTIAL LOGS  
WILL BE RELEASED

Received  
HODS  
OOD