

DISTRICT I  
1626 N. French Dr., Hobbs, NM 88240  
DISTRICT II  
611 South First, Artesia, NM 88210  
DISTRICT III  
1000 Rio Brazos Rd., Aztec, NM 87410  
DISTRICT IV  
2040 South Pacheco, Santa Fe, NM 87505

State of New Mexico  
Energy, Minerals and Natural Resources Department

Form C-102  
Revised March 17, 1989  
Instruction on back  
Submit to Appropriate District Office  
State Lease - 4 Copies  
Fee Lease - 3 Copies

OIL CONSERVATION DIVISION  
P.O. Box 2088  
Santa Fe, New Mexico 87504-2088

☐ AMENDED REPORT

WELL LOCATION AND ACREAGE DEDICATION PLAT

API Number <b>30-025-35261</b>	Pool Code	Pool Name <b>WILDCAT MISSISSIPPIAN</b>
Property Code <b>25300</b>	Property Name <b>BIG BEAR "ATN"</b>	Well Number <b>2</b>
OGED No. <b>025575</b>	Operator Name <b>YATES PETROLEUM CORPORATION</b>	Elevation <b>4012</b>

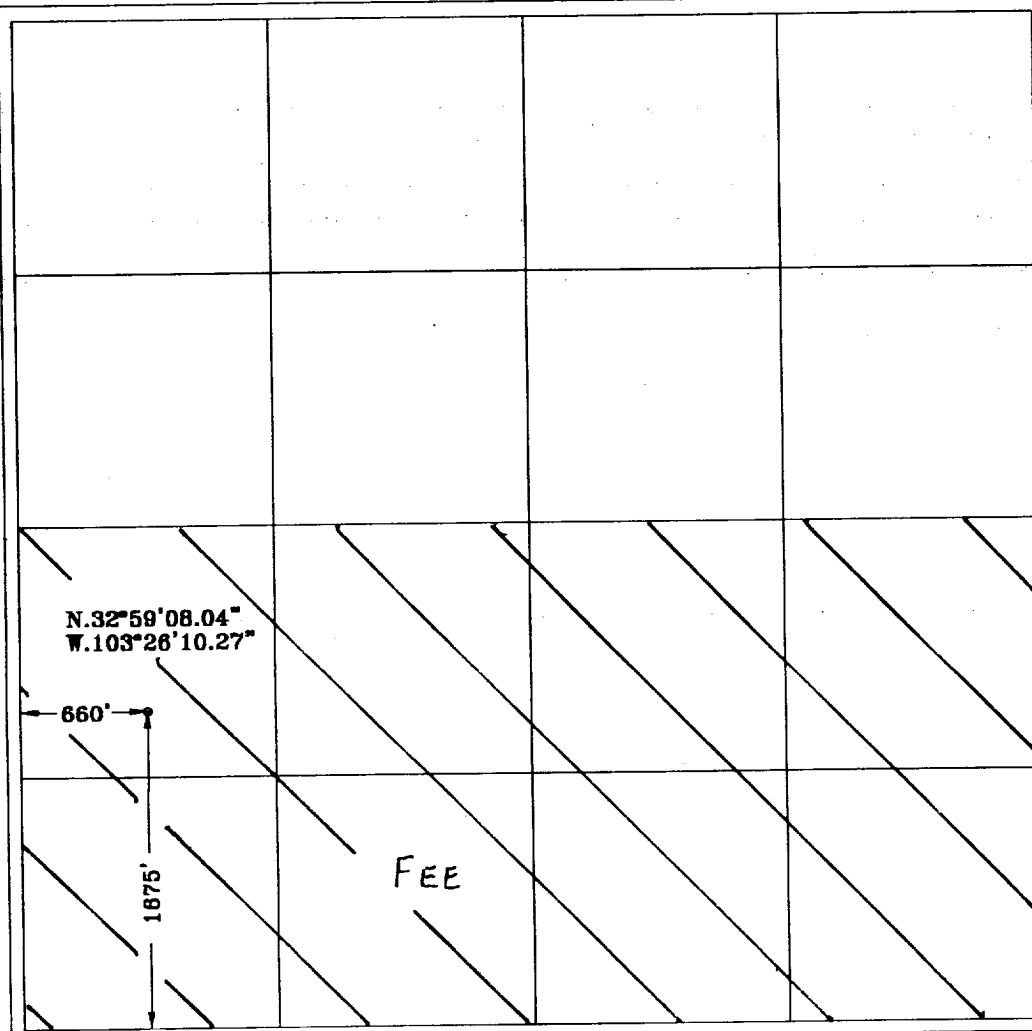
Surface Location

UL or lot No.	Section	Township	Range	Lot Idn	Feet from the	North/South line	Feet from the	East/West line	County
<b>L</b>	<b>29</b>	<b>15S</b>	<b>35E</b>		<b>1675</b>	<b>SOUTH</b>	<b>660</b>	<b>WEST</b>	<b>LEA</b>

Bottom Hole Location If Different From Surface

UL or lot No.	Section	Township	Range	Lot Idn	Feet from the	North/South line	Feet from the	East/West line	County
Dedicated Acres <b>320</b>	Joint or Infill	Consolidation Code	Order No.						

NO ALLOWABLE WILL BE ASSIGNED TO THIS COMPLETION UNTIL ALL INTERESTS HAVE BEEN CONSOLIDATED  
OR A NON-STANDARD UNIT HAS BEEN APPROVED BY THE DIVISION



OPERATOR CERTIFICATION

I hereby certify that the information contained herein is true and complete to the best of my knowledge and belief.

**Clifton R. May**  
Signature

**CLIFTON R. MAY**  
Printed Name

**REGULATORY AGENT**  
Title

**11-17-00**  
Date

SURVEYOR CERTIFICATION

I hereby certify that the well location shown on this plat was plotted from field notes of actual surveys made by me or under my supervision, and that the same is true and correct to the best of my belief.

**11/16/2000**  
Date Surveyed

Signature of Seal of  
Professional Surveyor

