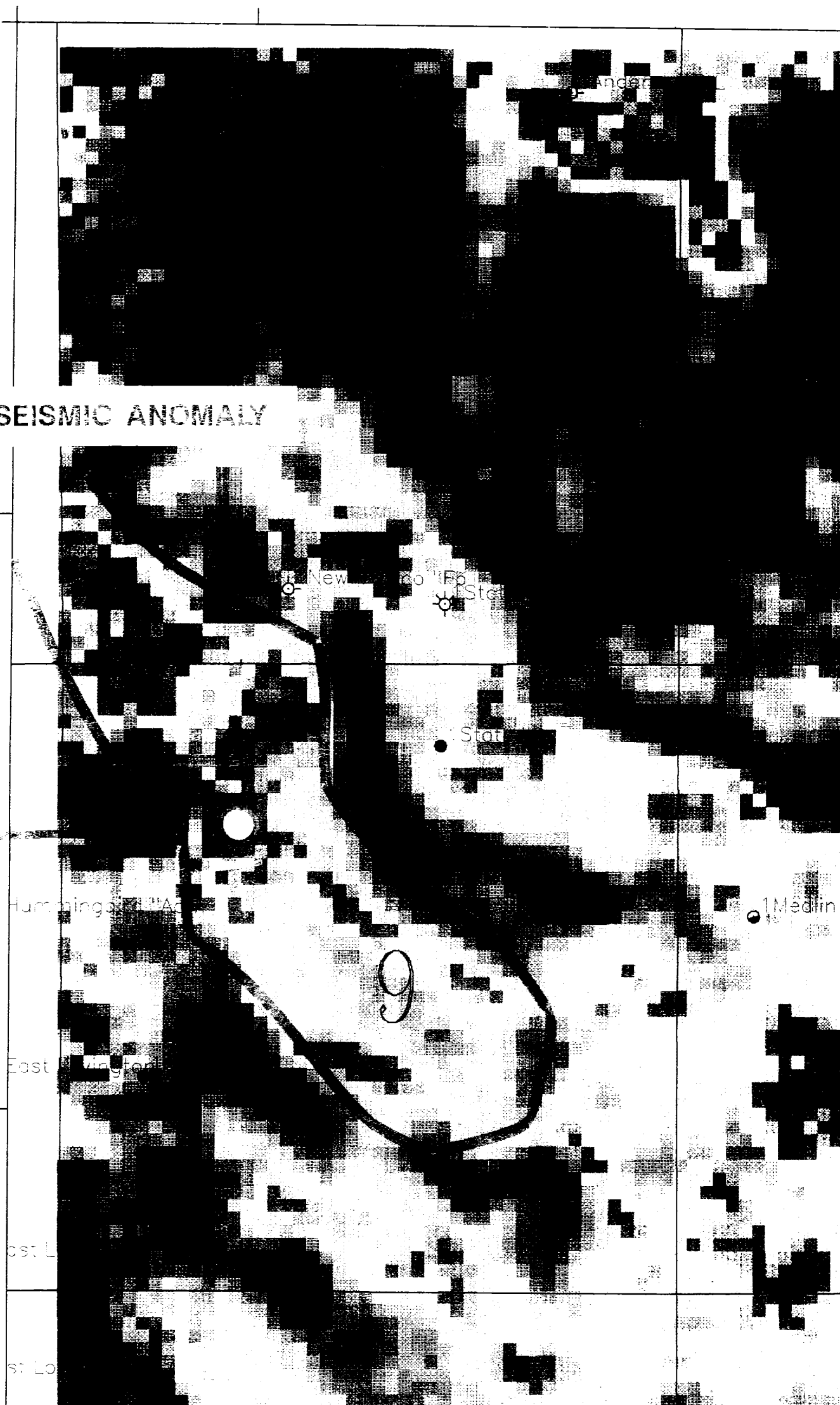


STRAWN SEISMIC ANOMALY

710000

705000



DISTRICT I
P.O. Box 1980, Hobbs, NM 88241-1980

DISTRICT II
P.O. Drawer 80, Artesia, NM 88211-0719

DISTRICT III
1000 Rio Brazos Rd., Aztec, NM 87410

DISTRICT IV
P.O. Box 2088, Santa Fe, NM 87504-2088

State of New Mexico

Energy, Minerals and Natural Resources Department

Form C-102
Revised February 10, 1994
Submit to Appropriate District Office
State Lease - 4 Copies
Fee Lease - 3 Copies

OIL CONSERVATION DIVISION

P.O. Box 2088
Santa Fe, New Mexico 87504-2088

☐ AMENDED REPORT

WELL LOCATION AND ACREAGE DEDICATION PLAT

API Number		Pool Code	Pool Name	
		40760	Lovington; Penn, Northeast	
Property Code	Property Name		Well Number	
26496	STATE Sec 9		2	
GRID No.	Operator Name		Elevation	
000873	APACHE CORPORATION		3816	

Surface Location

UL or lot No.	Section	Township	Range	Lot Idn	Feet from the	North/South line	Feet from the	East/West line	County
F	9	16 S	37 E		1610	NORTH	1517	WEST	LEA

Bottom Hole Location If Different From Surface

UL or lot No.	Section	Township	Range	Lot Idn	Feet from the	North/South line	Feet from the	East/West line	County
Dedicated Acres		Joint or Infill	Consolidation Code		Order No.				
80									

NO ALLOWABLE WILL BE ASSIGNED TO THIS COMPLETION UNTIL ALL INTERESTS HAVE BEEN CONSOLIDATED
OR A NON-STANDARD UNIT HAS BEEN APPROVED BY THE DIVISION

	OPERATOR CERTIFICATION <i>I hereby certify the the information contained herein is true and complete to the best of my knowledge and belief.</i> Signature Debra J. Anderson Printed Name Sr. Engineering Technician Title 12/13/00 Date
	SURVEYOR CERTIFICATION <i>I hereby certify that the well location shown on this plat was plotted from field notes of actual surveys made by me or under my supervision, and that the same is true and correct to the best of my belief.</i> OCTOBER 16, 2000 Date Surveyed Signature & Seal of Professional Surveyor W.O. Num. 00-11-1306 Certificate No. RONALD J. EIDSON, 3239 GARY G. EIDSON, 12841

DISTRICT IV
P.O. Box 2088, Santa Fe, NM 87504-2088

Form C-102
Revised February 10, 1994
Submit to Appropriate District Office
State Lease - 4 Copies
Fee Lease - 3 Copies

P.O. Box 2088
Santa Fe, New Mexico 87504-2088

☐ AMENDED REPORT

API Number		Pool Code	Pool Name	
		40760	Lovington; Penn, Northeast	
Property Code	Property Name			Well Number
26496	STATE Sec 9			2
OGRID No.	Operator Name			Elevation
000873	APACHE CORPORATION			3816

Surface Location									
UL or lot No.	Section	Township	Range	Lot Idn	Feet from the	North/South line	Feet from the	East/West line	County
F	9	16 S	37 E		1610	NORTH	1517	WEST	LEA

UL or lot No.	Section	Township	Range	Lot Idn	Feet from the	North/South line	Feet from the	East/West line	County
Dedicated Acres	Joint or Infill	Consolidation Code	Order No.						
80									

NO ALLOWABLE WILL BE ASSIGNED TO THIS PROPERTY

SECTION STANDARD UNIT HAS BEEN APPROVED BY THE DIVISION

The figure is a survey plat on a grid. It shows a well location (YATES WELL) and its relationship to several other points and lines. The well is located 2120.8 feet from a point, with a bearing of 160 degrees. A line labeled 'TX-NM PL. CO.' runs from the well towards the top right, with a bearing of N60°23'E and a distance of 2041.7 feet. Other lines and bearings include 1610', 1517', 160', and 160°. The plat also includes NAD 27 coordinates (Y=707115 N, X=829844 E) and LAT./LONG. coordinates (32°56'21.5"N, 103°15'29.6"W). The well is identified as YATES PETROLEUM CORP. HUMMING BIRD ADM STATE #1, located S76°38'W 2120.8 FEET from a point. The plat is signed by Debra J. Anderson, Sr. Engineering Technician, dated 12/13/00. It is also signed by JLP, dated OCTOBER 16, 2000. The W.O. Num. is 00-11-1306. The Certificate No. is RONALD J. EIDSON, 3239 and GARY G. EIDSON, 12641.

WARREN PETROL

TX-NM PL. CO. N60°23'E 2041.7'

YATES PETROL

YATES WELL 2120.8'

1610'

1517'

160'

160'

NAD 27 NME
Y=707115 N
X=829844 E

LAT./LONG.
32°56'21.5"N
103°15'29.6"W

YATES PETROLEUM CORP.
HUMMING BIRD ADM STATE #1
S76°38'W 2120.8 FEET

OPERATOR CERTIFICATION

I hereby certify the the information contained herein is true and complete to the best of my knowledge and belief.

Debra J. Anderson
Signature

Debra J. Anderson
Printed Name

Sr. Engineering Technician
Title

12/13/00
Date

SURVEYOR CERTIFICATION

I hereby certify that the well location shown on this plat was plotted from field notes of actual surveys made by me or under my supervision, and that the same is true and correct to the best of my belief.

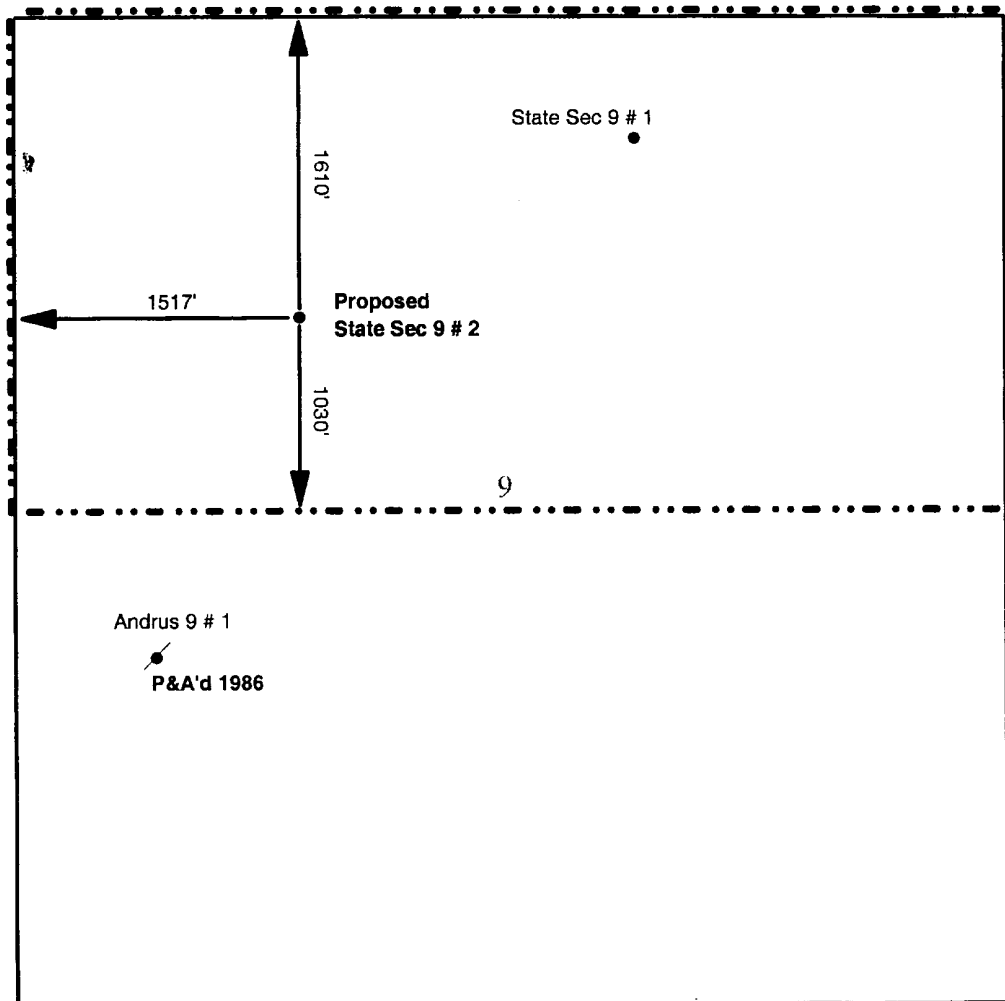
OCTOBER 16, 2000

Date Surveyed JLP

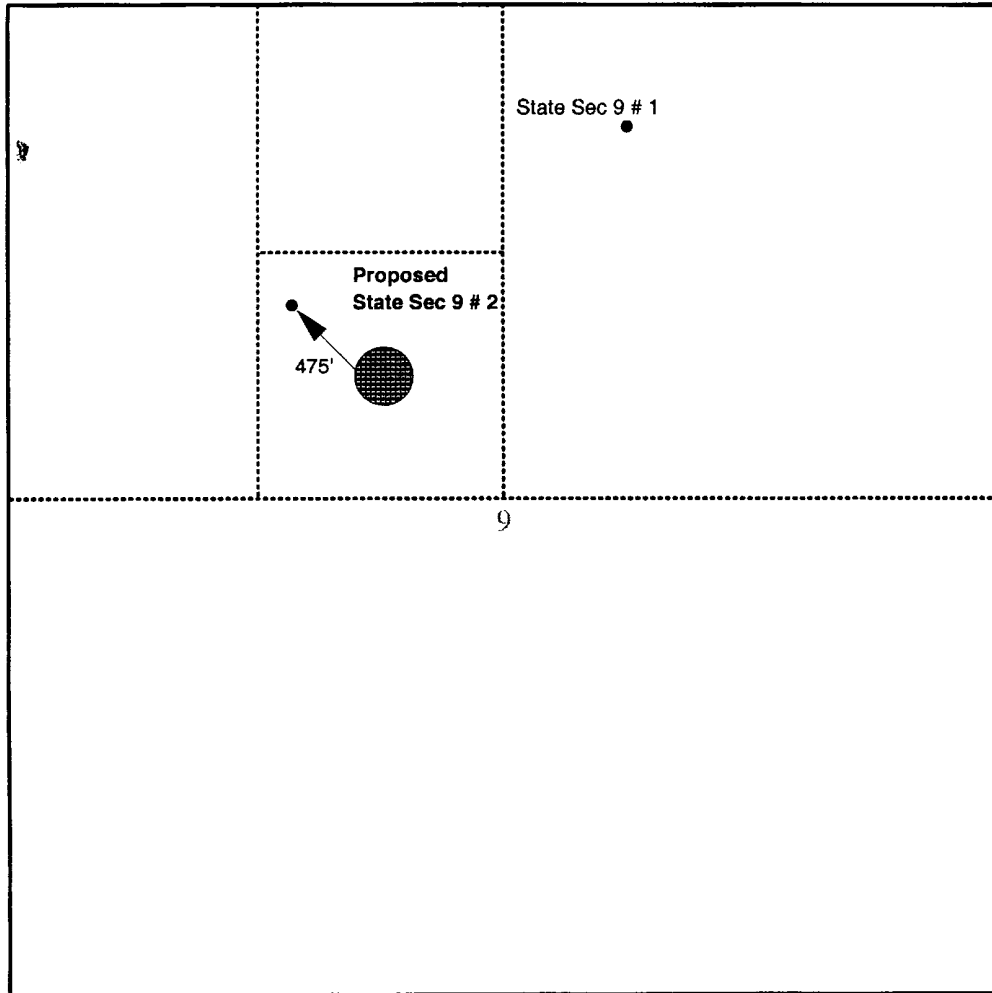
Signature & Seal of Professional Surveyor

W.O. Num. 00-11-1306

Certificate No. RONALD J. EIDSON, 3239
GARY G. EIDSON, 12641



STATE SEC 9 LEASE
SECTION 9
T16S - R37E
LEA COUNTY, NEW MEXICO
SCALE: 1" = 1000'



STATE SEC 9 LEASE
SECTION 9
T16S - R37E
LEA COUNTY, NEW MEXICO
SCALE: 1" = 1000'