

District I  
P.O. Box 1980, Hobbs, NM 88241-1980  
District II  
811 South First, Artesia, NM 88210  
District III  
1000 Rio Brazos Rd., Aztec, NM 87410  
District IV  
2040 South Pacheco, Santa Fe, NM 87505

State of New Mexico  
Energy, Minerals & Natural Resources Department  
OIL CONSERVATION DIVISION  
2040 South Pacheco  
Santa Fe, NM 87505

Form C-101  
Revised October 18, 1994  
Instructions on back  
Submit to Appropriate District Office  
State Lease - 6 Copies  
Fee Lease - 5 Copies

☐ AMENDED REPORT

APPLICATION FOR PERMIT TO DRILL, RE-ENTER, DEEPEN, PLUGBACK, OR ADD A ZONE

1 Operator Name and Address Apache Corporation attn: Dennis Bickford; 3rd floor 2000 Post Oak Blvd. Ste. 100 Houston, Texas 77056-4400		2 OGRID Number 873
		3 API Number 30-025-35324
4 Property Code 26496 16833	5 Property Name State Sec 9	6 Well No. 2

7 Surface Location

UL or lot no.	Section	Township	Range	Lot Idn	Feet from the	North/South Line	Feet from the	East/West Line	County
F	9	16-S	37-E		1610	North	1517	West	Lea

8 Proposed Bottom Hole Location If Different From Surface

UL or lot no.	Section	Township	Range	Lot Idn	Feet from the	North/South Line	Feet from the	East/West Line	County
9 Proposed Pool 1 Lovington; Penn, Northeast					10 Proposed Pool 2				

11 Work Type Code N	12 Well Type Code O	13 Cable/Rotary R	14 Lease Type Code S	15 Ground Level Elevation 3816' KB
16 Multiple	17 Proposed Depth 12,000'	18 formation Strawn	19 Contractor	20 Spud Date 12/01/2000

21 Proposed Casing and Cement Program

Hole Size	Casing Size	Casing weight/foot	Setting Depth	Sacks of Cement	Estimated TOC
17 1/2"	13 3/8"	32.3#	500'	350	Circulate to Surf
11"	8 5/8"	29#	5200'	1820	Circulate to Surf
7 7/8"	5 1/2"	17#	12,000'	960	4500'

22 Describe the proposed program. If this application is to DEEPEN or PLUG BACK give the data on the present productive zone and proposed new productive zone. Describe the blowout prevention program, if any. Use additional sheets if necessary.

Propose to drill 17 1/2" hole to 500', run & set 500' of 13 3/8" and cement,  
Lead: Permian Basin Filler Cmt 200 sx 11.4 ppg 2.91 yield  
Tail: Prem. Plus w/2% CACL2 150 sx - 14.8 ppg - 1.34 yield to surface  
Drill 11" hole to 5200', run & set 5200' 8 5/8" and cmt. Lead: Interfill "C" 1570 sx 11.9 ppg - 2.45 yield  
Tail: Premium plus + 1% CACL2 - 250 sx 14.8 ppg + 1.33 yield  
Drill 7 7/8" hole to 12,000' run and set 12,000 05 5 1/2" and cmt. Lead: 1st Stage Interfill "C" 220 sx Tail: 320 sx Super H 13.0 ppg + 1.66 yield  
2nd Stage Lead: 250 sx Interfill C - 11.9 + 2.45 Tail: 150 sx Premium Plus "Neat" cmt @ 14.8 + 1.32 yield

Blow Out Prevention: See attached copy

23 I hereby certify that the information given above is true and complete to the best of my knowledge and belief.

Signature: *Everett Ouzts*

Printed Name: Everett Ouzts

Title: Engineering Technician

Date: 10/25/2000

Phone: 915-631-3733

OIL CONSERVATION DIVISION

Approved by: ORIGINAL SIGNED BY CHRIS WILLIAM  
DISTRICT I SUPERVISOR

Title:

Approval Date:

Expiration Date:

Conditions on Approval:



**DISTRICT I**

P.O. Box 1580, Hobbs, NM 88241-1580

**State of New Mexico**

Energy, Minerals and Natural Resources Department

Form C-102

Revised February 10, 1994

Submit to Appropriate District Office

State Lease - 4 Copies

Fee Lease - 3 Copies

**DISTRICT II**

P.O. Box 120, Artesia, NM 88211-0120

**DISTRICT III**

1080 Rio Grande Rd., Aztec, NM 87410

**DISTRICT IV**

P.O. Box 1000, Santa Fe, NM 87504-2000

**OIL CONSERVATION DIVISION**

P.O. Box 2088

Santa Fe, New Mexico 87504-2088

✓ AMENDED REPORT

**WELL LOCATION AND ACREAGE DEDICATION PLAT**

NSL-4535

API Number <b>30-025-35324</b>	Pool Code <b>40760</b>	Pool Name <b>Lovington; Penn, Northeast</b>
Property Code <b>26496</b>	Property Name <b>STATE SEC 9</b>	Well Number <b>2</b>
OCED No. <b>00873</b>	Operator Name <b>APACHE CORPORATION</b>	Elevation <b>3816</b>

**Surface Location**

III or lot No.	Section	Township	Range	Lot Idn	Feet from the	North/South Line	Feet from the	East/West line	County
<b>F</b>	<b>9</b>	<b>16 S</b>	<b>37 E</b>		<b>1610</b>	<b>NORTH</b>	<b>1517</b>	<b>WEST</b>	<b>LEA</b>

**Bottom Hole Location If Different From Surface**

III or lot No.	Section	Township	Range	Lot Idn	Feet from the	North/South line	Feet from the	East/West line	County

Dedicated Acres	Joint or Infill	Consolidation Code	Order No.
<b>80</b>			

**NO ALLOWABLE WILL BE ASSIGNED TO THIS COMPLETION UNTIL ALL INTERESTS HAVE BEEN CONSOLIDATED OR A NON-STANDARD UNIT HAS BEEN APPROVED BY THE DIVISION**

	<b>OPERATOR CERTIFICATION</b>  I hereby certify the the information contained herein is true and complete to the best of my knowledge and belief.   Signature <b>Debra J. Anderson</b> Printed Name <b>Sr. Engineering Technician</b> Title <b>01/03/01</b> Date
	<b>SURVEYOR CERTIFICATION</b>  I hereby certify that the well location shown on this plat was plotted from field notes of actual surveys made by me or under my supervision and that the same is true and correct to the best of my belief.  <b>OCTOBER 16, 2000</b> Date Surveyed  Signature of Professional Surveyor <b>RONALD J. GIBSON</b> W.O. Num. 00-11-9306 Certificate No. <b>RONALD J. GIBSON, 3233</b> <b>GARY C. GIBSON, 12841</b>

TOTAL P.02

DISTRICT I  
P.O. Box 1980, Hobbs, NM 88241-1980

DISTRICT II  
P.O. Drawer 22, Artesia, NM 88211-0719

DISTRICT III  
1000 Rio Brazos Rd., Artec, NM 87410

DISTRICT IV  
P.O. Box 2088, Santa Fe, NM 87504-2088

State of New Mexico

Energy, Minerals and Natural Resources Department

Form C-102  
Revised February 10, 1994  
Submit to Appropriate District Office  
State Lease - 4 Copies  
Fee Lease - 3 Copies

OIL CONSERVATION DIVISION

P.O. Box 2088  
Santa Fe, New Mexico 87504-2088

☐ AMENDED REPORT

WELL LOCATION AND ACREAGE DEDICATION PLAT

API Number <b>30-025-35324</b>	Pool Code 40760	Pool Name Lovington; Penn, Northeast
Property Code 26496	Property Name STATE SEC 9	Well Number 2
OGRID No. 00873	Operator Name APACHE CORPORATION	Elevation 3816

Surface Location

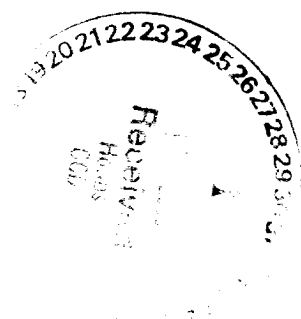
UL or lot No. F	Section 9	Township 16 S	Range 37 E	Lot Idn	Feet from the 1610	North/South line NORTH	Feet from the 1517	East/West line WEST	County LEA
--------------------	--------------	------------------	---------------	---------	-----------------------	---------------------------	-----------------------	------------------------	---------------

Bottom Hole Location If Different From Surface

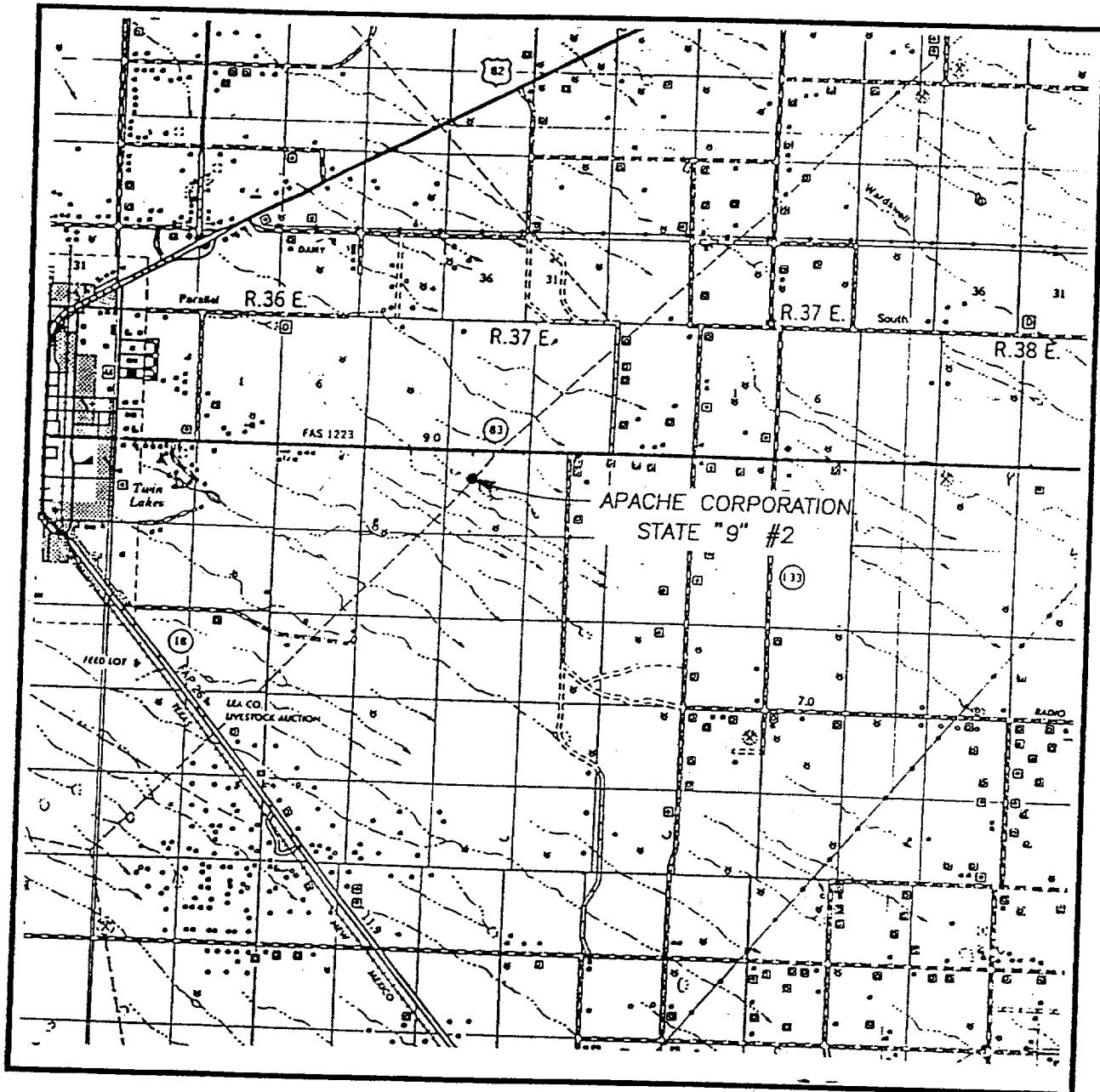
UL or lot No.	Section	Township	Range	Lot Idn	Feet from the	North/South line	Feet from the	East/West line	County
Dedicated Acres <b>4080</b>	Joint or Infill	Consolidation Code	Order No. <b>NSL-4535</b>						

NO ALLOWABLE WILL BE ASSIGNED TO THIS COMPLETION UNTIL ALL INTERESTS HAVE BEEN CONSOLIDATED  
OR A NON-STANDARD UNIT HAS BEEN APPROVED BY THE DIVISION

	<p>OPERATOR CERTIFICATION</p> <p>I hereby certify the the information contained herein is true and complete to the best of my knowledge and belief.</p> <p><u>Everett Ouzts</u> Signature</p> <p>Everett Ouzts Printed Name</p> <p>Eng. Tech Title</p> <p>10/25/00 Date</p>
	<p>SURVEYOR CERTIFICATION</p> <p>I hereby certify that the well location shown on this plat was plotted from field notes of actual surveys made by me or under my supervision, and that the same is true and correct to the best of my belief.</p> <p>OCTOBER 16, 2000 Date Surveyed</p> <p>Signature &amp; Seal of Professional Surveyor <u>Ronald J. Eidson</u> 10/20/00</p> <p>W.O. Num. 00-11-1306</p> <p>Certificate No. RONALD J. EIDSON, 3239 GARY G. EIDSON, 12641</p>



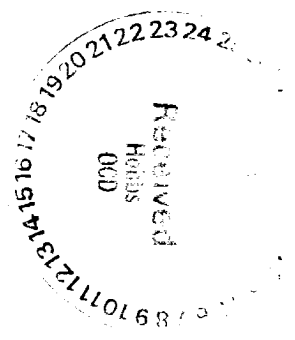
## VICINITY MAP



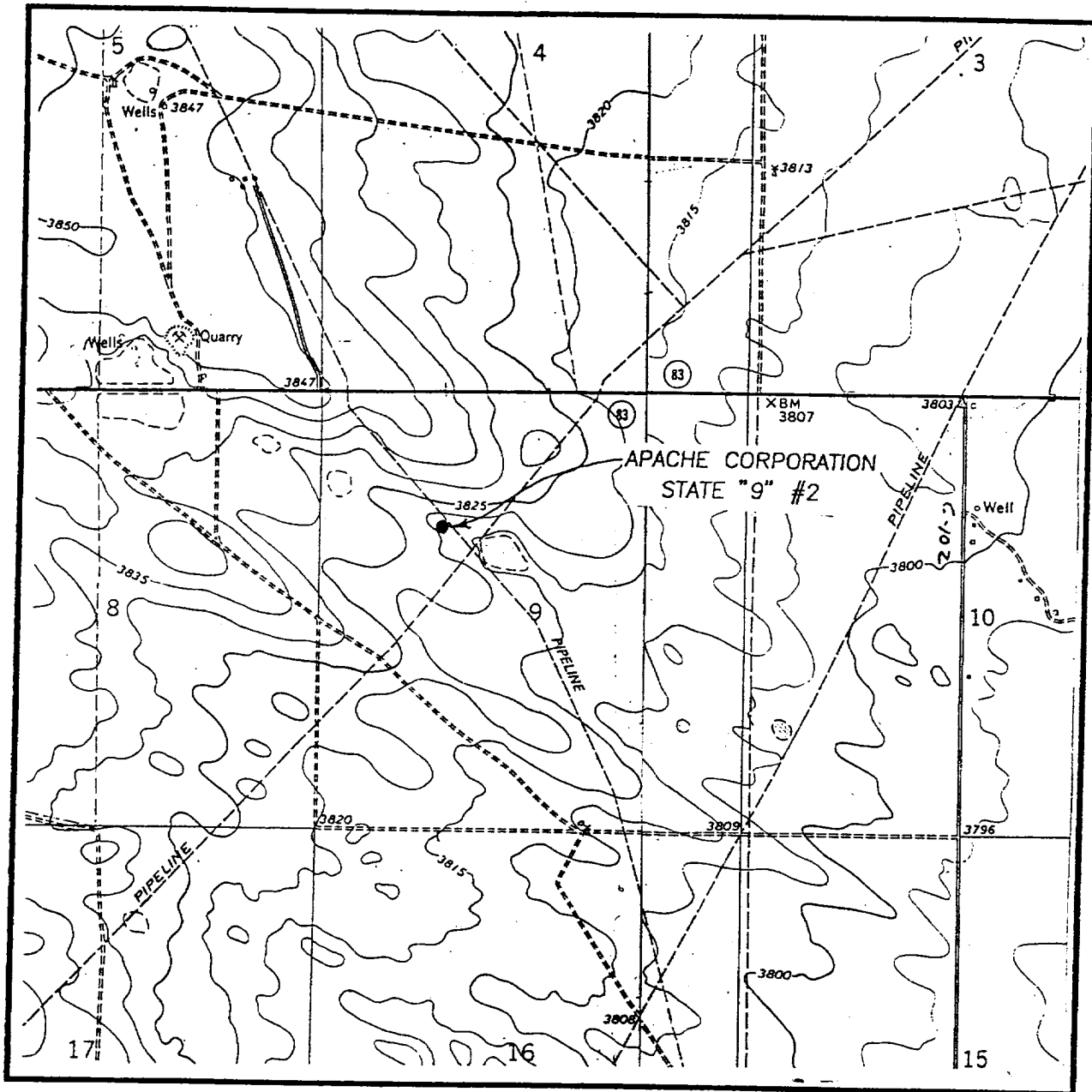
SCALE: 1" = 2 MILES

SEC. 9 TWP. 16-S RGE. 37-E  
SURVEY N.M.P.M.  
COUNTY LEA  
DESCRIPTION 1610' FNL & 1517' FWL  
ELEVATION 3816  
OPERATOR APACHE CORPORATION  
LEASE STATE "9"

**JOHN WEST SURVEYING  
HOBBS, NEW MEXICO  
(505) 393-3117**



# LOCATION VERIFICATION MAP



SCALE: 1" = 2000'

CONTOUR INTERVAL - 5'

SEC. 9 TWP. 16-S RGE. 37-E

SURVEY N.M.P.M.

COUNTY LEA

DESCRIPTION 1610' FNL & 1517' FWL

ELEVATION 3816

OPERATOR APACHE CORPORATION

LEASE STATE "9"

U.S.G.S. TOPOGRAPHIC MAP  
HUMBLE CITY NW, LOVINGTON, N.M.

**JOHN WEST SURVEYING**  
**HOBBS, NEW MEXICO**  
**(505) 393-3117**

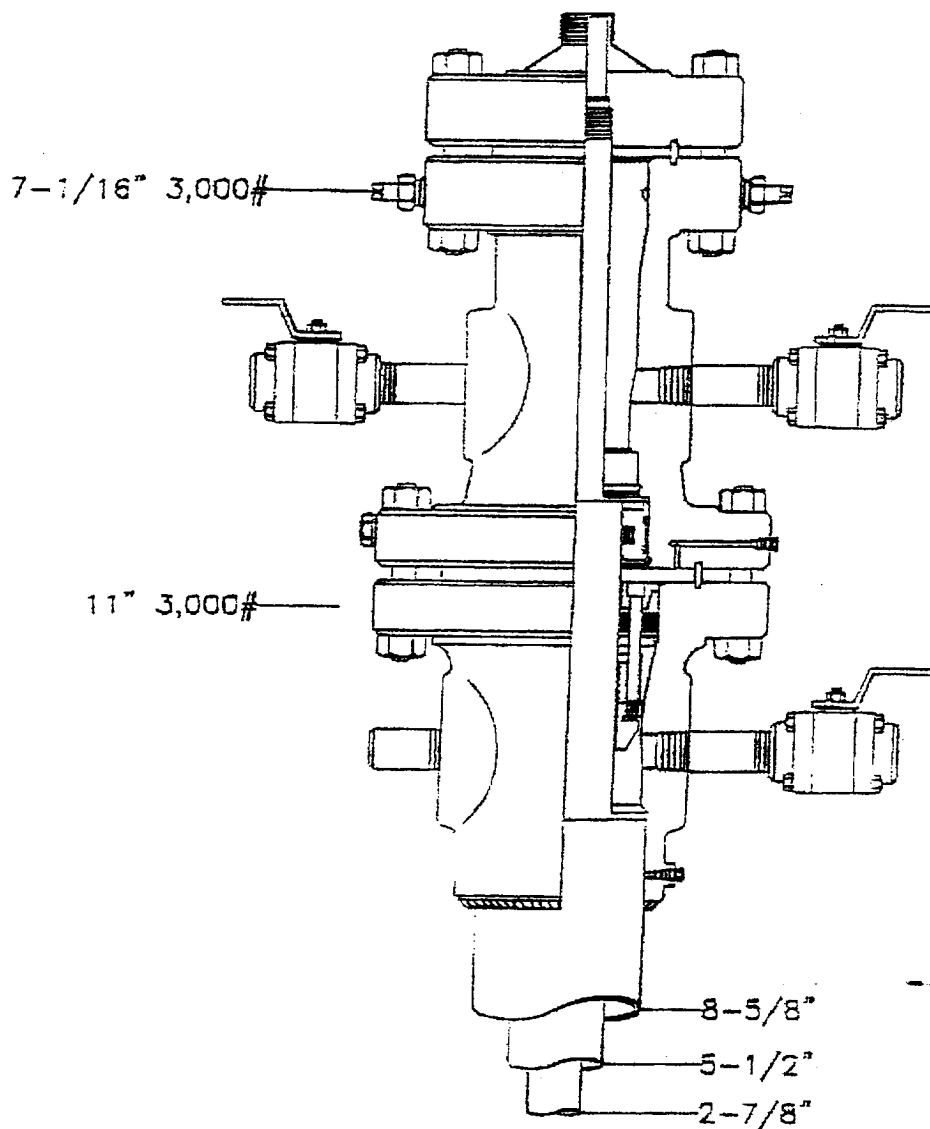


WESTERN REGION

State Sec. 9

LEA COUNTY, NEW MEXICO

NAME	DATE OF CHANGING CLERK	DATE	4/22/98
FILE NUMBER	ISSUED ON	LAST ADDRESS	



ABOVE DATE DOES NOT  
INDICATE WHEN  
CONFIDENTIAL LOGS  
WILL BE RELEASED

ELF

8/2/01

