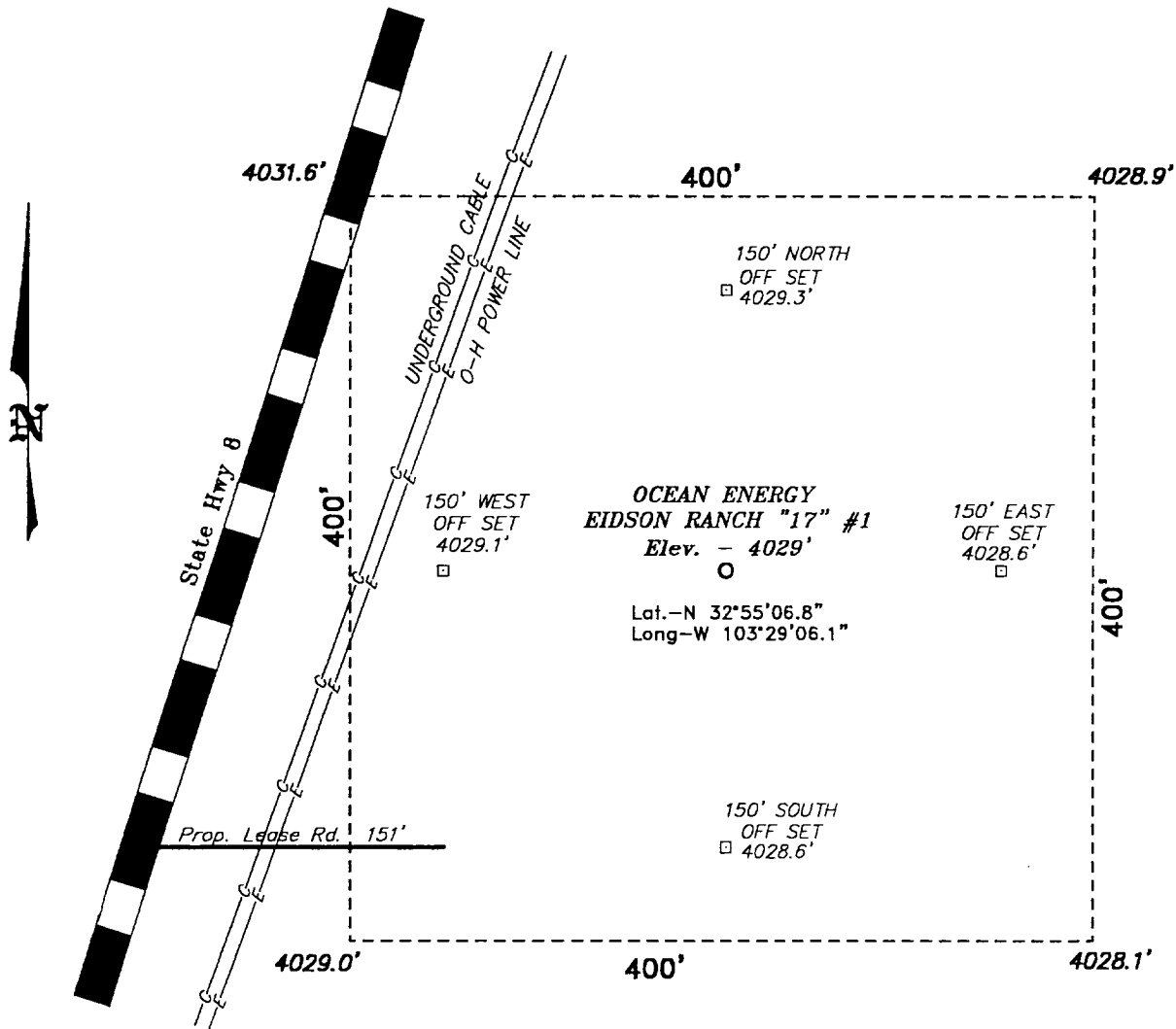
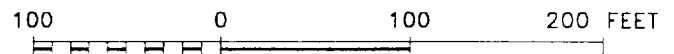


SECTION 17, TOWNSHIP 16 SOUTH, RANGE 35 EAST, N.M.P.M.,  
LEA COUNTY, NEW MEXICO.



Directions to Location:

FROM THE JUNCTION OF US HWY 82 & STATE HWY 8, GO SOUTH ON HWY 8 FOR 1.9 MILE TO A PROPOSED LEASE ROAD.



SCALE: 1" = 100'

**BASIN SURVEYS** P.O. BOX 1786-HOBBS, NEW MEXICO

W.O. Number: 1227 Drawn By: K. GOAD

Date: 03-14-2001 Disk: KJG CD#4 - 1227A.DWG

**OCEAN ENERGY**

REF: Eidson Ranch "17" No. 1 / Well Pad Topo

THE EIDSON RANCH "17" No. 1 LOCATED 1310' FROM  
THE SOUTH LINE AND 1090' FROM THE WEST LINE OF  
SECTION 17, TOWNSHIP 16 SOUTH, RANGE 35 EAST,  
N.M.P.M., LEA COUNTY, NEW MEXICO.

Survey Date: 03-12-2001 Sheet 1 of 1 Sheets