

DISTRICT I
1825 N. French Dr., Hobbs, NM 88240
DISTRICT II
811 South First, Artesia, NM 88210
DISTRICT III
1000 Rio Brazos Rd., Aztec, NM 87410
DISTRICT IV
2040 South Pacheco, Santa Fe, NM 87505

State of New Mexico
Energy, Minerals and Natural Resources Department

Form C-102
Revised March 17, 1999

Submit to Appropriate District Office
State Lease - 4 Copies
Fee Lease - 3 Copies

OIL CONSERVATION DIVISION

2040 South Pacheco
Santa Fe, New Mexico 87504-2088

☐ AMENDED REPORT

WELL LOCATION AND ACREAGE DEDICATION PLAT

API Number 30-025-355 33	Pool Code 96882	Pool Name Shoe Bar NORTH MORROW
Property Code 23309	Property Name TOWNSEND STATE	Well Number 10
OGRID No. 169355	Operator Name OCEAN ENERGY INC.	Elevation 4014'

Surface Location

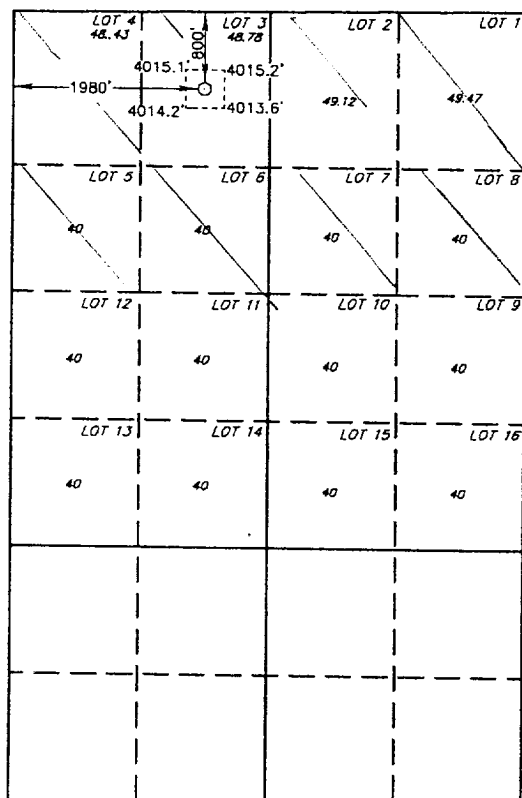
UL or lot No. 3	Section 3	Township 16 S	Range 35 E	Lot Idn	Feet from the 800'	North/South line NORTH	Feet from the 1980'	East/West line WEST	County LEA
--------------------	--------------	------------------	---------------	---------	-----------------------	---------------------------	------------------------	------------------------	---------------

Bottom Hole Location If Different From Surface

UL or lot No.	Section	Township	Range	Lot Idn	Feet from the	North/South line	Feet from the	East/West line	County
Dedicated Acres 355.80	Joint or Infill	Consolidation Code	Order No.						

NO ALLOWABLE WILL BE ASSIGNED TO THIS COMPLETION UNTIL ALL INTERESTS HAVE BEEN CONSOLIDATED
OR A NON-STANDARD UNIT HAS BEEN APPROVED BY THE DIVISION

LAT - N32°57'51.2"
LONG - W103°26'51.8"



SCALE: 1"=2000'

OPERATOR CERTIFICATION

I hereby certify the the information
contained herein is true and complete to the
best of my knowledge and belief.

Jeanie McMillan
Signature
Jeanie McMillan
Printed Name
REGULATORY SPECIALIST
Title
3/27/03
Date

SURVEYOR CERTIFICATION

I hereby certify that the well location shown
on this plat was plotted from field notes of
actual surveys made by me or under my
supervision and that the same is true and
correct to the best of my belief.

MARCH 19, 2003

Date Surveyed
Signature & Seal of
Professional Surveyor
NEW MEXICO
W.D. No. 3132
Certificate No. Gary L. Jones 7977
JLP
BASIN-SURVEYS