

District I
PO Box 1980, Hobbs, NM 88241-1980

District II
811 South First, Artesia, NM 88210

District III
1000 Rio Brazos Rd., Aztec, NM 87410

District IV
2040 South Pacheco, Santa Fe, NM 87505

State of New Mexico
Energy, Minerals & Natural Resources Department

OIL CONSERVATION DIVISION
2040 South Pacheco
Santa Fe, NM 87505

Form C-101
Revised October 18, 1994
Instructions on back
Submit to Appropriate District Office
State Lease - 6 Copies
Fee Lease - 5 Copies

☐ AMENDED REPORT

APPLICATION FOR PERMIT TO DRILL, RE-ENTER, DEEPE N, PLUGBACK, OR ADD A ZONE

¹ Operator Name and Address SDX Resources, Inc. PO Box 5061 Midland, TX 79704 915/685-1761		² OGRID Number 020451
		³ API Number 30-025-35641
⁴ Property Code 28490	⁵ Property Name CG State	⁶ Well No. 1

⁷Surface Location

UL or lot no.	Section	Township	Range	Lot Idn	Feet from the	North/South line	Feet from the	East/West Line	County
E	4	15S	33E		2310	North	700	West	Lea

⁸Proposed Bottom Hole Location If Different From Surface

UL or lot no.	Section	Township	Range	Lot Idn	Feet from the	North/South line	Feet from the	East/West Line	County
⁹ Proposed Pool 1 Saunders San Andres						¹⁰ Proposed Pool 2			

¹¹ Work Type Code N	¹² Well Type Code O	¹³ Cable/Rotary R	¹⁴ Lease Type Code S	¹⁵ Ground Level Elevation 4212
¹⁶ Multiple No	¹⁷ Proposed Depth 5500	¹⁸ Formation San Andres	¹⁹ Contractor United Drlg	²⁰ Spud Date 09-01-01

²¹Proposed Casing and Cement Program

Hole Size	Casing Size	Casing weight/foot	Setting Depth	Sacks of Cement	Estimated TOC
12-1/4"	9-5/8"	40	450	350	surf
8-1/2"	5-1/2"	17	5500	350	3500'

²²Describe the proposed program. If this application is to DEEPE N or PLUG BACK give the data on the present productive zone and proposed new productive zone. Describe the blowout prevention program, if any. Use additional sheets if necessary.

Drill a 12-1/4" surface hole to 450' & cmt 9-5/8", J-55, 40# csg w/350 sx of Cl C w/2 % CaCl & 1/4#/sx cellophane. Circ to surf. Drill 8-1/2" hole from 450 - 5500'. Run OH logs & run 5-1/2" 17# J-55 csg to TD. Cmt w/ 350 sx Cl C w/2% CaCl. Will perf & stimulate the San Andres formation as necessary for optimum production.

Permit Expires 1 Year From Approval
Date Unless Drilling Underway

²³I hereby certify that the information given above is true and complete to the best of my knowledge and belief.

Signature:

Bonnie Atwater

Printed name: Bonnie Atwater

Title: Regulatory Tech

7/20/01

OIL CONSERVATION DIVISION

Approved By:

Orig. Signed by
Paul Kautz
Geologist

Title:

Approval Date:

Expiration Date:

JUN 07 2001

DISTRICT I
P.O. Box 1980, Hobbs, NM 88241-1980

State of New Mexico
Energy, Minerals and Natural Resources Department

Form C-102
Revised February 10, 1994
Submit to Appropriate District Office
State Lease - 4 Copies
Fee Lease - 3 Copies

DISTRICT II
P.O. Drawer DD, Artesia, NM 88211-0719

OIL CONSERVATION DIVISION

P.O. Box 2088
Santa Fe, New Mexico 87504-2088

DISTRICT III
1000 Rio Brazos Rd., Artec, NM 87410

DISTRICT IV
P.O. BOX 2088, SANTA FE, N.M. 87504-2088

WELL LOCATION AND ACREAGE DEDICATION PLAT

☐ AMENDED REPORT

API Number 30-025-35641	Pool Code 96196	Pool Name Saunders San Andres	
Property Code 28490	Property Name C.G.		Well Number 1
OGRID No. 020451	Operator Name SDX RESOURCES, INC.		Elevation 4212'

Surface Location

UL or lot No.	Section	Township	Range	Lot Idn	Feet from the	North/South line	Feet from the	East/West line	County
E	4	15-S	33-E		2310	NORTH	700	WEST	LEA

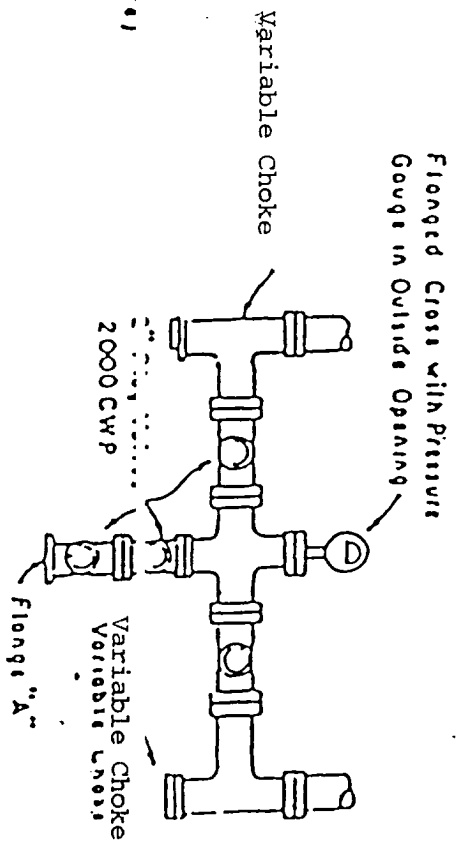
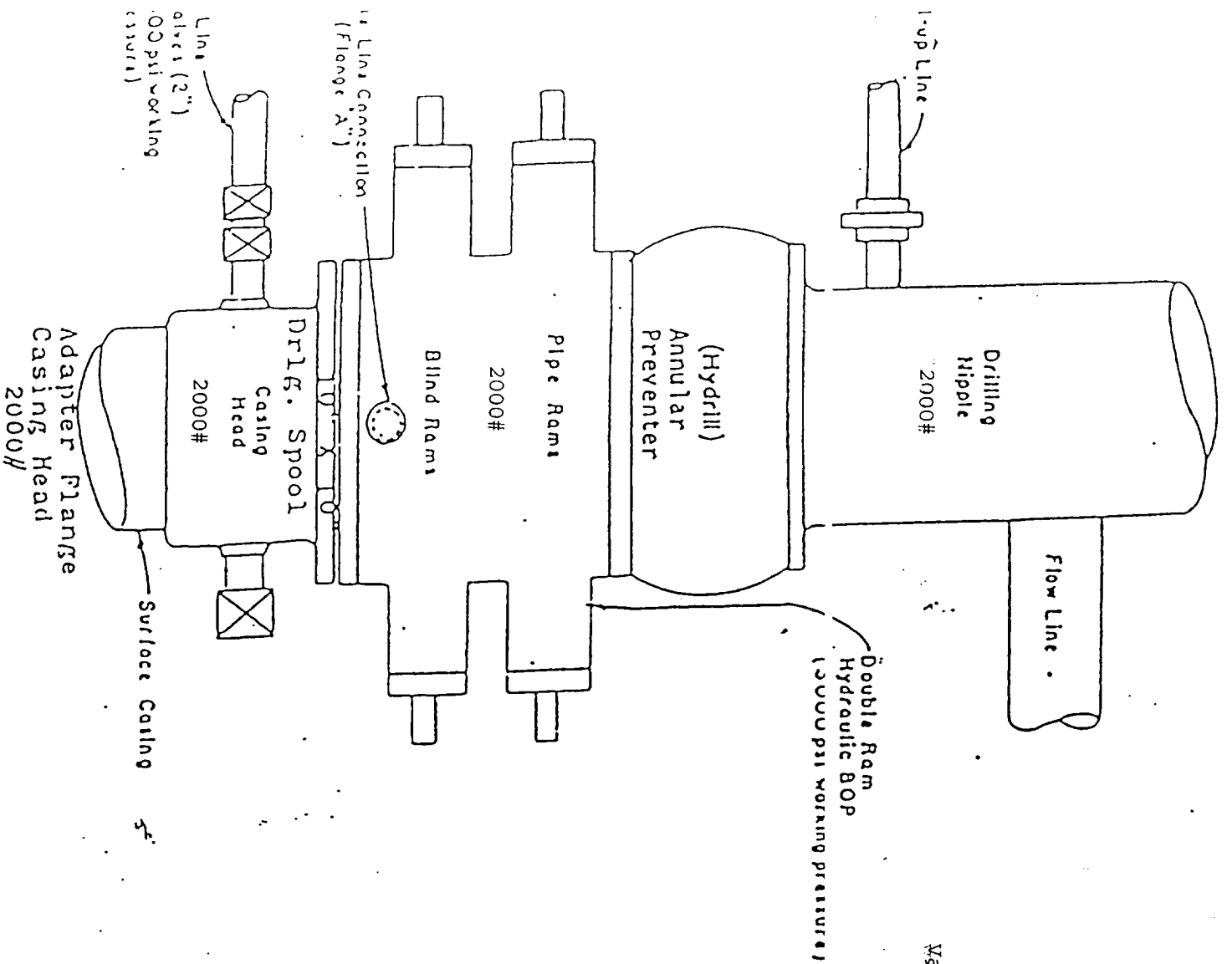
Bottom Hole Location If Different From Surface

UL or lot No.	Section	Township	Range	Lot Idn	Feet from the	North/South line	Feet from the	East/West line	County

Dedicated Acres 40	Joint or Infill	Consolidation Code	Order No.
-----------------------	-----------------	--------------------	-----------

NO ALLOWABLE WILL BE ASSIGNED TO THIS COMPLETION UNTIL ALL INTERESTS HAVE BEEN CONSOLIDATED
OR A NON-STANDARD UNIT HAS BEEN APPROVED BY THE DIVISION

	<p>OPERATOR CERTIFICATION</p> <p>I hereby certify the the information contained herein is true and complete to the best of my knowledge and belief.</p> <p><i>Bonnie Atwater</i> Signature Bonnie Atwater Printed Name Regulatory Tech Title 7/20/01 Date</p>	
	<p>SURVEYOR CERTIFICATION</p> <p>I hereby certify that the well location shown on this plat was plotted from field notes of actual surveys made by me or under my supervision, and that the same is true and correct to the best of my belief.</p> <p>MAY 30, 2001</p> <p>Date Surveyed _____ AWB Signature & Seal of Professional Surveyor <i>Ronald E. Edson</i> 6/05/01 01-11-0666</p>	
	<p>Certificate No. RONALD E. EDSON 3239 GARY EDSON 12641</p>	



PLAN VIEW-CHOKE MANIFOLD

BLOWOUT PREVENTER
DIAGRAM

ABOVE DATE DOES NOT
INDICATE WHEN
CONFIDENTIAL LOGS
WILL BE RELEASED

3/6/62 ELF