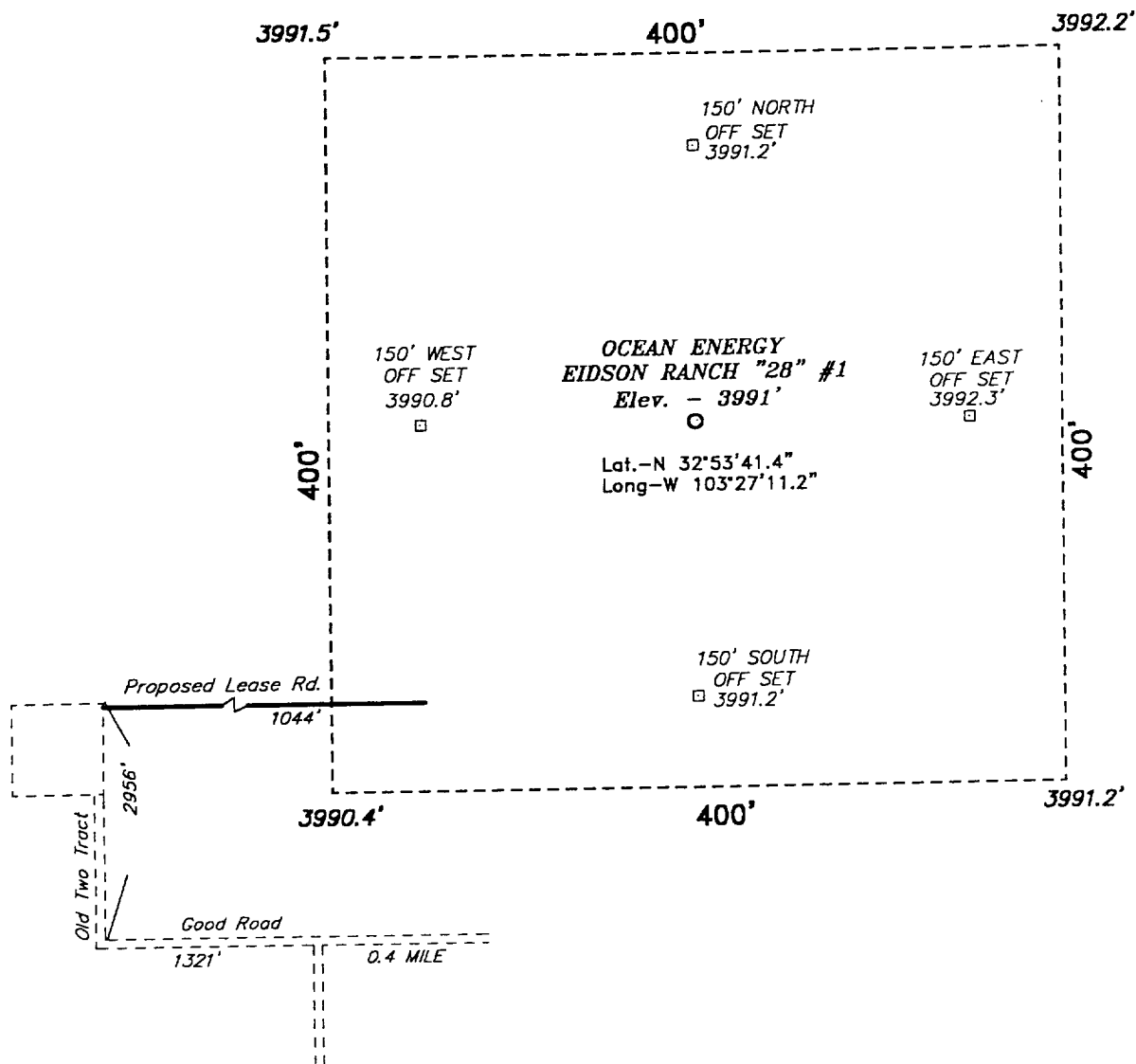
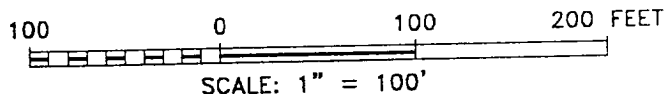


SECTION 28, TOWNSHIP 16 SOUTH, RANGE 35 EAST, N.M.P.M.,
LEA COUNTY, NEW MEXICO.



Directions to Location:

ON STATE HWY. #8 300 FEET SOUTH OF MM#14 GO EAST ON LEASE ROAD 3.5 MILES, THEN NORTH 0.8 MILES THRU CATTLE GUARD, THEN 0.4 MILES WEST, THEN CONTINUING WEST 1321 FEET, THEN NORTH 2956 FEET TO THE NEC OF OLD PAD, THEN EAST 1044 FEET TO LOCATION.



OCEAN ENERGY

REF: EIDSON RANCH "28" No. 1 / Well Pad Topo

THE EIDSON RANCH "28" No. 1 LOCATED 1980' FROM THE NORTH LINE AND 660' FROM THE EAST LINE OF SECTION 28, TOWNSHIP 16 SOUTH, RANGE 35 EAST, N.M.P.M., LEA COUNTY, NEW MEXICO.

BASIN SURVEYS P.O. BOX 1786 - HOBBS, NEW MEXICO

W.O. Number: 1815

Drawn By: J. PRESLEY

Date: 08/20/01

Disk: JLP #1 - OCE1815A

Survey Date: 08/18/01

Sheet 1 of 1 Sheets