

OPERATOR: YATES PETROLEUM CORP.
WELL/LEASE: RUNNELS ASP #5
COUNTY: LEA

P. 11-165-35e

497-3575

750/S & 1100/E
30-025-35697

STATE OF NEW MEXICO
DEVIATION REPORT

200	1/2
376	1/2
749	1/4
1,334	1/2
1,834	1/2
2,330	1
2,827	1
3,167	1
3,576	3/4
3,824	1 1/2
4,009	3/4
4,200	1
4,708	3/4
5,057	1/4
5,555	3/4
6,048	1/4
6,542	3/4
7,041	1/2
7,569	1/4
8,047	3/4
8,550	1/2
9,046	1/2
9,549	3/4
9,894	1
10,397	3/4
10,648	1 1/4
11,151	1 1/4
11,670	2 1/2

By: Steve Moore

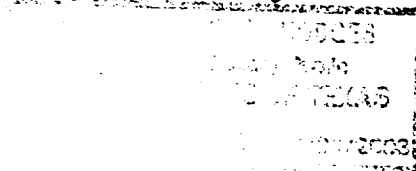
STATE OF TEXAS

COUNTY OF MIDLAND

The foregoing instrument was acknowledged before me on this 1st day of April, 2002, by
Steve Moore on behalf of Patterson-UTI Drilling Company LP, LLLP.

Joni D. Hodges
Notary Public for Midland County, Texas

My Commission Expires: 3/31/2003



Kz

