

District I
1625 N. French Dr., Hobbs, NM 88240
District II
811 S. 1st Street, Artesia, NM 88210
District III
1000 Rio Brazos Rd., Aztec, NM 87410
District IV
2040 South Pacheco, Santa Fe, NM 87505

State of New Mexico
Energy, Minerals & Natural Resources

Form C-101
Revised March 17, 1999

Oil Conservation Division
2040 South Pacheco
Santa Fe, NM 87505

Submit to appropriate District Office
State Lease - 6 Copies
Fee Lease - 5 Copies

☐ AMENDED REPORT

APPLICATION FOR PERMIT TO DRILL, RE-ENTER, DEEPEN, PLUGBACK, OR ADD A ZONE

¹ Operator Name and Address Energen Resources Corporation 3300 N. "A" St., Bldg 4, Ste. 100, Midland, TX 79705		² OGRID Number 162928
		³ API Number 30-025-35857
⁴ Property Code 29529	⁵ Property Name State "T"	⁶ Well No. 2

⁷ Surface Location

UL or lot no.	Section	Township	Range	Lot. Idn	Feet from the	North/South Line	Feet from the	East/West line	County
J	5	15-S	33-E		1980'	South	1980'	East	Lea

⁸ Proposed Bottom Hole Location If Different From Surface

UL or lot no.	Section	Township	Range	Lot. Idn	Feet from the	North/South Line	Feet from the	East/West line	County
⁹ Proposed Pool 1 Saunders, San Andres (96196)					¹⁰ Proposed Pool 2				

¹¹ Work Type Code N	¹² Well Type Code O	¹³ Cable/Rotary R	¹⁴ Lease Type Code S	¹⁵ Ground Level Elevation 4221'
¹⁶ Multiple No	¹⁷ Proposed Depth 5,100'	¹⁸ Formation San Andres	¹⁹ Contractor TBD	²⁰ Spud Date ASAP

²¹ Proposed Casing and Cement Program

Hole Size	Casing Size	Casing weight/foot	Setting Depth	Sacks of Cement	Estimated TOC
11"	8 5/8"	24.00#	400'	200	Circulate
7 7/8"	5 1/2"	15.50#	5,100'	600	Circulate

²² Describe the proposed program. If this application is to DEEPEN or PLUG BACK, give the data on the present productive zone and proposed new productive zone.

Describe the blowout prevention program, if any. Use additional sheets if necessary.

Energen Resources Corporation proposes to drill and test the San Andres Formation as follows:
Drill a 11" hole to approximately 400', run 8 5/8" casing and cement back to surface. Nipple-up a 11" X 3M# hydraulic double ram BOP w/ a 2" x 3M# choke manifold. Install H2S monitoring equipment and train all rig personnel. Drill a 7 7/8" hole to approximately 5,100', run 5 1/2" casing and cement back to the surface if the samples and logs are positive, or P&A in accordance w/the NMOC's requirements. If production casing is ran, plan to perforate & acidize the San Andres formation as necessary and place the well on production.

²³ I hereby certify that the information given above is true and complete to the best of my knowledge and belief.

Signature:

Sharon Hindman

Printed name: Sharon Hindman

Title: Regulatory Analyst

Date:

03/04/2002

Phone:

915 684-3693

OIL CONSERVATION DIVISION

ORIGINAL SIGNED BY

Approved by:

PAUL F. KAUTZ

PETROLEUM ENGINEER

Title:

Approval Date:

MAR 07 2002

Expiration Date:

Conditions of Approval:

Attached ☐

Permit Expires 1 Year From Approval
Date Unless Drilled Underway

SCS
8

dmml

DISTRICT I
P. O. Box 1980
Hobbs, NM 88241-1980

State of New Mexico
Energy, Minerals, and Natural Resources Department

Form C-102
Revised 02-10-94
Instructions on back

DISTRICT II
P. O. Drawer DD
Artesia, NM 88211-0719

OIL CONSERVATION DIVISION

P. O. Box 2088
Santa Fe, New Mexico 87504-2088

Submit to the Appropriate
District Office
State Lease - 4 copies
Fee Lease - 3 copies

☐ AMENDED REPORT

DISTRICT III
1000 Rio Brazos Rd.
Aztec, NM 87410

DISTRICT IV
P. O. Box 2088
Santa Fe, NM 87507-2088

WELL LOCATION AND ACREAGE DEDICATION PLAT

1 API Number 30-024-35857	2 Pool Code 96196	3 Pool Name Saunders, San Andres
4 Property Code 29529	5 Property Name STATE 'T'	6 Well Number 2
7 OGRID No. 16928	8 Operator Name ENERGEN RESOURCES CORPORATION	9 Elevation 4221'

10 SURFACE LOCATION

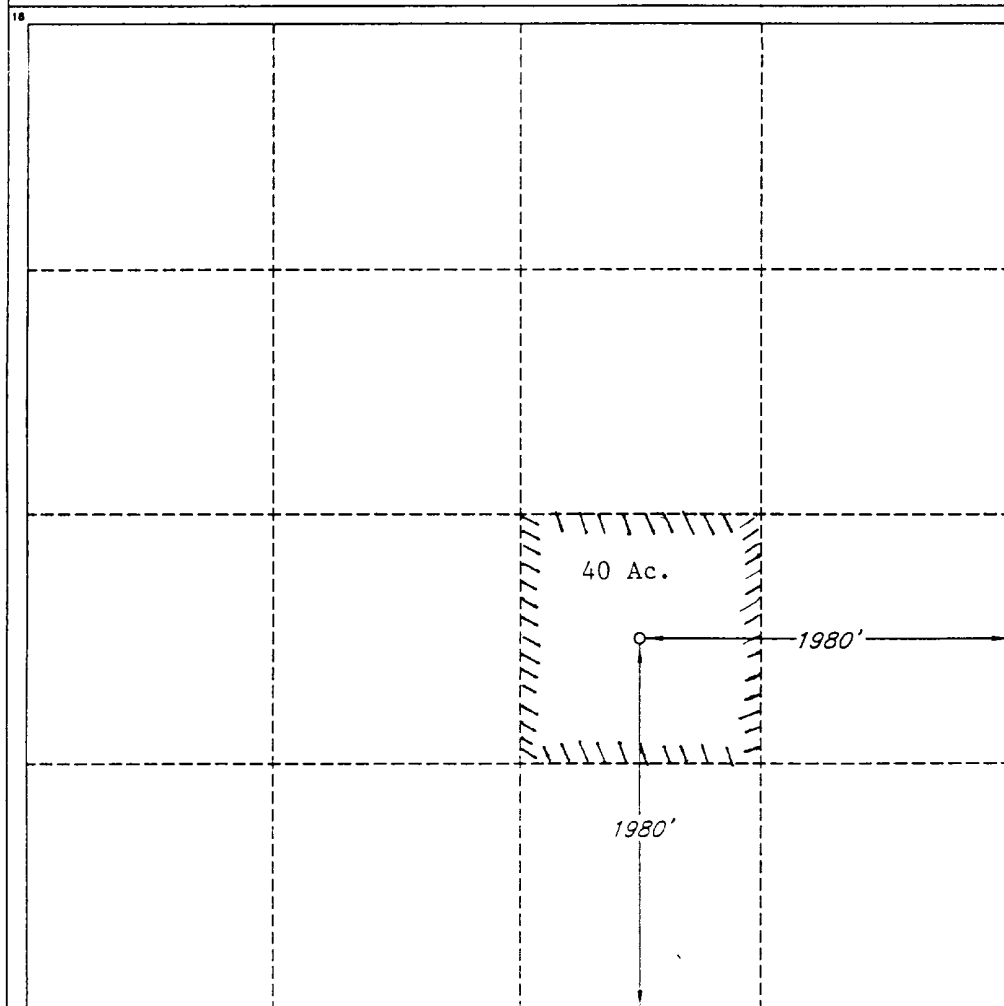
UL or lot no.	Section	Township	Range	Lot Ida	Feet from the	North/South line	Feet from the	East/West line	County
J	5	15 SOUTH	33 EAST, N.M.P.M.		1980'	SOUTH	1980'	EAST	LEA

"BOTTOM HOLE LOCATION IF DIFFERENT FROM SURFACE

UL or lot no.	Section	Township	Range	Lot Ida	Feet from the	North/South line	Feet from the	East/West line	County

12 Dedicated Acres 40	13 Joint or Infill	14 Consolidation Code	15 Order No.
---------------------------------	--------------------	-----------------------	--------------

NO ALLOWABLE WELL BE ASSIGNED TO THIS COMPLETION UNTIL ALL INTERESTS HAVE BEEN CONSOLIDATED OR A NON-STANDARD UNIT HAS BEEN APPROVED BY THE DIVISION



OPERATOR CERTIFICATION

I hereby certify that the information contained herein is true and complete to the best of my knowledge and belief.

Signature
Sharon Hindman

Printed Name

Sharon Hindman

Title

Regulatory Analyst

Date

3/04/2002

SURVEYOR CERTIFICATION

I hereby certify that the well location shown on this plat was plotted from field notes of actual surveys made by me or under my supervision, and that the same is true and correct to the best of my belief.

Date of Survey

JANUARY 31, 2002

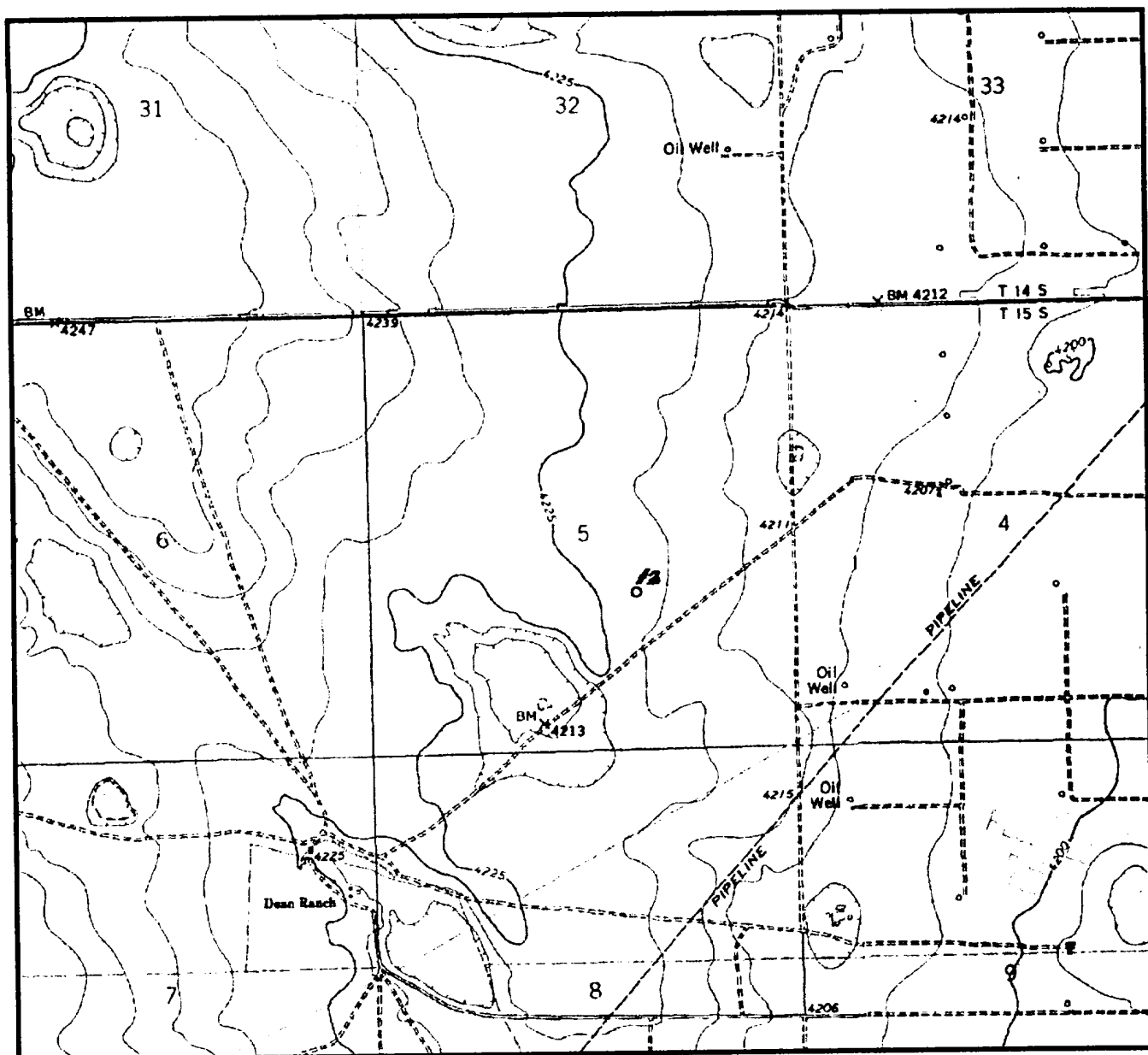
Signature and Seal of Professional Surveyor

Certificate No.

V. L. BEZNER R.P.S. #7920

JOB #80253 / 122 SW / J.C.P.

LOCATION & ELEVATION VERIFICATION MAP



SCALE : 1" = 2000'

CONTOUR INTERVAL 5 FEET

SECTION 5 TWP T-15-S RGE R-33-E
 SURVEY NEW MEXICO PRINCIPAL MERIDIAN
 COUNTY LEA STATE NM
 DESCRIPTION 1980' FSL & 1980' FEL
 ELEVATION 4221'

OPERATOR ENERGEN RESOURCES CORPORATION
 LEASE STATE "T" #2

U.S.G.S. TOPOGRAPHIC MAP
DEAN RANCH, NEW MEXICO

LAT. 33°02'38"
 LONG. 103°38'03"



This location has been very carefully staked on the ground according to the best official survey records, maps, and other data available to us.
 Review this plot and notify us immediately of any possible discrepancy.

TOPOGRAPHIC LAND SURVEYORS

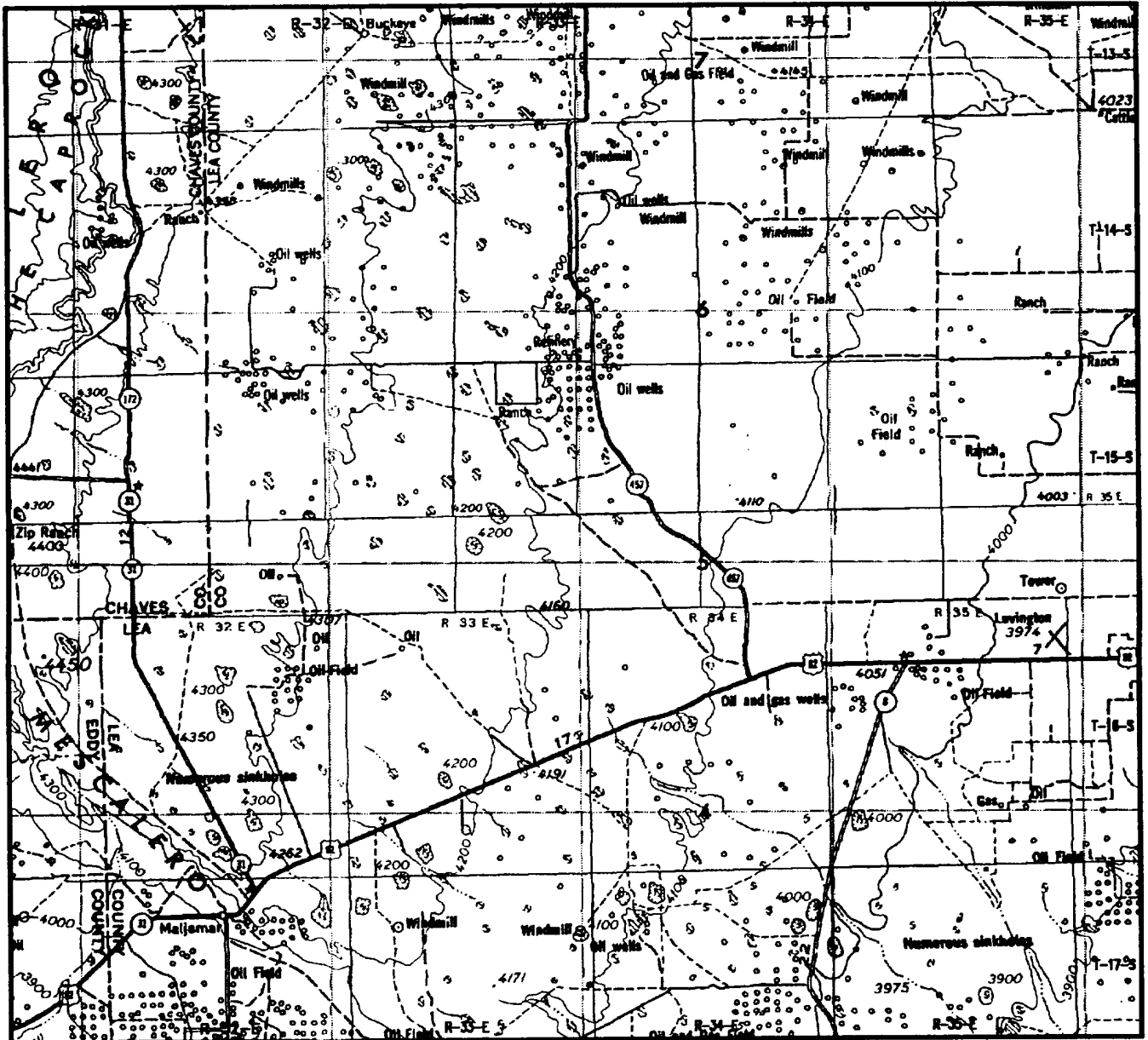
Surveying & Mapping for the Oil & Gas Industry

1307 N. HOBART
 PAMPA, TX. 79065
 (800) 658-6382

6709 N. CLASSEN BLVD.
 OKLAHOMA CITY, OK. 73116
 (800) 654-3219

2903 N. BIG SPRING
 MIDLAND, TX. 79705
 (800) 767-1653

VICINITY MAP



SECTION 5 TWP T-15-S RGE R-33-E
 SURVEY NEW MEXICO PRINCIPAL MERIDIAN
 COUNTY LEA STATE NM
 DESCRIPTION 1980' FSL & 1980' FEL

OPERATOR ENERGEN RESOURCES CORPORATION
 LEASE STATE "T" #2

DISTANCE & DIRECTION FROM JCT. OF U.S. 82 & S.H.
457 ±11.0 MILES WEST OF LOVINGTON, GO NORTH 8.3
MILES ON S.H. 457, THENCE WEST 0.6 MILE ON LEASE
ROAD, THENCE SOUTH 0.3 MILE ON LEASE RD., THENCE
WEST 0.8 MILE ON LEASE ROAD TO A POINT ±1000'
NORTHEAST OF SOUTHEAST CORNER OF SECTION 5.



This location has been very carefully staked on the ground according to the best official survey records, maps, and other data available to us.
 Review this plat and notify us immediately of any possible discrepancy.

TOPOGRAPHIC LAND SURVEYORS

Surveying & Mapping for the Oil & Gas Industry

1307 N. HOBART
 PAMPA, TX. 79065
 (800) 658-6382

6709 N. CLASSEN BLVD.
 OKLAHOMA CITY, OK. 73116
 (800) 654-3219

2903 N. BIG SPRING
 MIDLAND, TX. 79705
 (800) 767-1653



ENERGEN RESOURCES CORPORATION

STATE "T" #2

BOP DIAGRAM
3,000# MWP BOP & CHOKE MANIFOLD

