

DISTRICT I
1625 N. French Dr., Hobbs, NM 88240

DISTRICT II
811 South First, Artesia, NM 88210

DISTRICT III
1000 Rio Brazos Rd., Aztec, NM 87410

DISTRICT IV
2040 South Pacheco, Santa Fe, NM 87505

State of New Mexico
Energy, Minerals and Natural Resources Department

Form C-102
Revised March 17, 1999
Instruction on back
Submit to Appropriate District Office
State Lease - 4 Copies
Fee Lease - 3 Copies

OIL CONSERVATION DIVISION

P.O. Box 2088
Santa Fe, New Mexico 87504-2088

☐ AMENDED REPORT

WELL LOCATION AND ACREAGE DEDICATION PLAT

API Number 30-025-35859	Pool Code 97172	Pool Name Wildcat Mississippian
Property Code 025575-29586	Property Name DOTSON "BAN"	Well Number 1
OGRID No. 25575	Operator Name YATES PETROLEUM CORPORATION	Elevation 4022

Surface Location

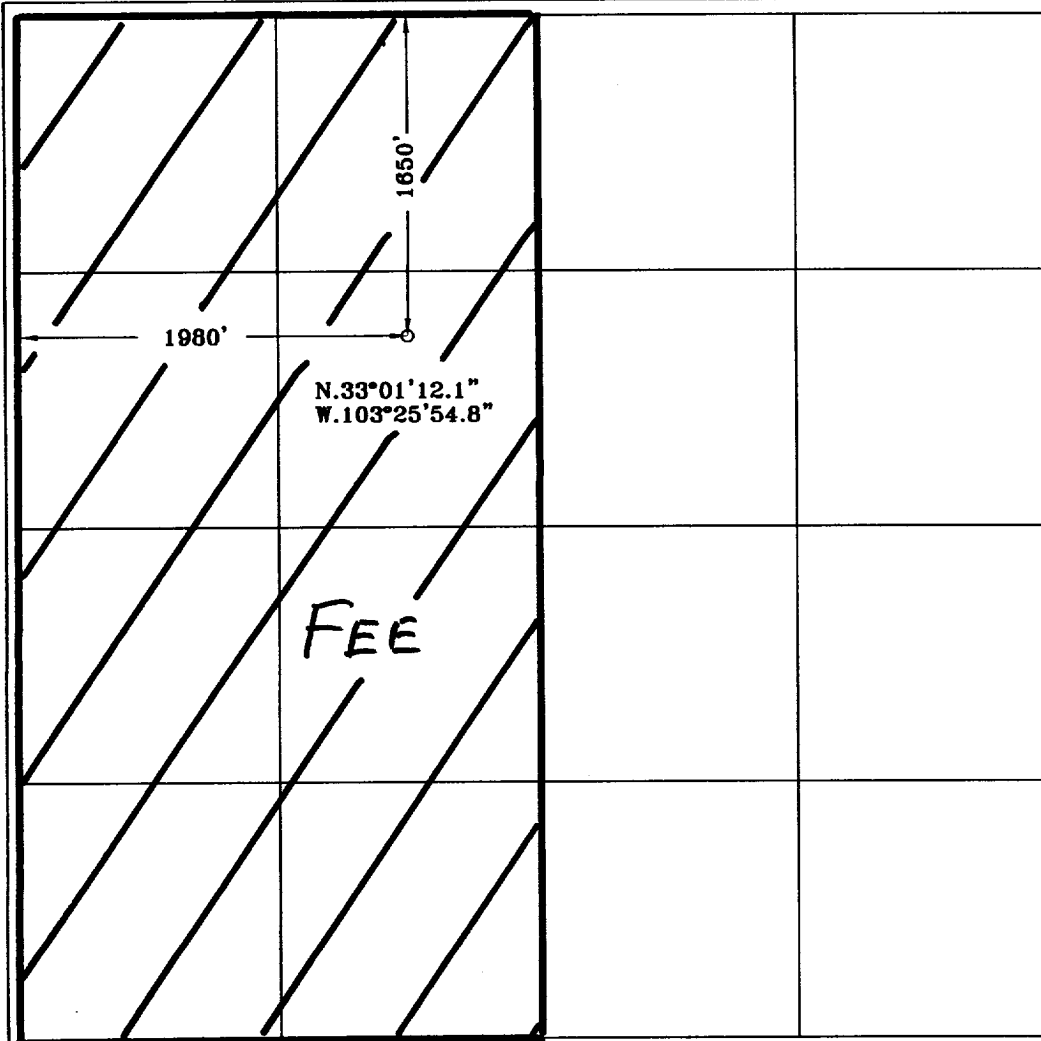
UL or lot No. F	Section 17	Township 15S	Range 35E	Lot Idn	Feet from the 1650	North/South line NORTH	Feet from the 1980	East/West line WEST	County LEA
--------------------	---------------	-----------------	--------------	---------	-----------------------	---------------------------	-----------------------	------------------------	---------------

Bottom Hole Location If Different From Surface

UL or lot No.	Section	Township	Range	Lot Idn	Feet from the	North/South line	Feet from the	East/West line	County
---------------	---------	----------	-------	---------	---------------	------------------	---------------	----------------	--------

Dedicated Acres 320	Joint or Infill	Consolidation Code	Order No.
------------------------	-----------------	--------------------	-----------

NO ALLOWABLE WILL BE ASSIGNED TO THIS COMPLETION UNTIL ALL INTERESTS HAVE BEEN CONSOLIDATED
OR A NON-STANDARD UNIT HAS BEEN APPROVED BY THE DIVISION



OPERATOR CERTIFICATION

I hereby certify the the information
contained herein is true and complete to the
best of my knowledge and belief.

Clofton R. May
Signature
Clofton R. May
Printed Name
Regulatory Agent
Title
3/5/02
Date

SURVEYOR CERTIFICATION

I hereby certify that the well location shown
on this plat was plotted from field notes of
actual surveys made by me or under my
supervision, and that the same is true and
correct to the best of my belief.

2/28/2002

Date Surveyed
Signature & Seal of
Professional Surveyor
HEGSCHELL JONES
NEW MEXICO
REGISTRATION NO. 3640
Certificate No. Herschel L. Jones RLS 3640
DOTSON 1
GENERAL SURVEYING COMPANY