

DISTRICT I
P.O. Box 1980, Hobbs, NM 88241-1980

DISTRICT II
P.O. Drawer DD, Artesia, NM 88211-0719

DISTRICT III
1000 Rio Brazos Rd., Aztec, NM 87410

DISTRICT IV
P.O. BOX 2088, SANTA FE, N.M. 87504-2088

State of New Mexico
Energy, Minerals and Natural Resources Department

OIL CONSERVATION DIVISION

P.O. Box 2088
Santa Fe, New Mexico 87504-2088

Form C-102
Revised February 10, 1994
Submit to Appropriate District Office
State Lease - 4 Copies
Fee Lease - 3 Copies

WELL LOCATION AND ACREAGE DEDICATION PLAT

☐ AMENDED REPORT

| | | |
|-----------------------------------|---|---|
| API Number 30-025-35865 | Pool Code 86390 | Pool Name Townsend; Mississippian, N. |
| Property Code 28579 | Property Name BLUEFIN 25 | Well Number 1 |
| OGRID No. 036554 | Operator Name TMBR/SHARP DRILLING, INC. | Elevation 3959' |

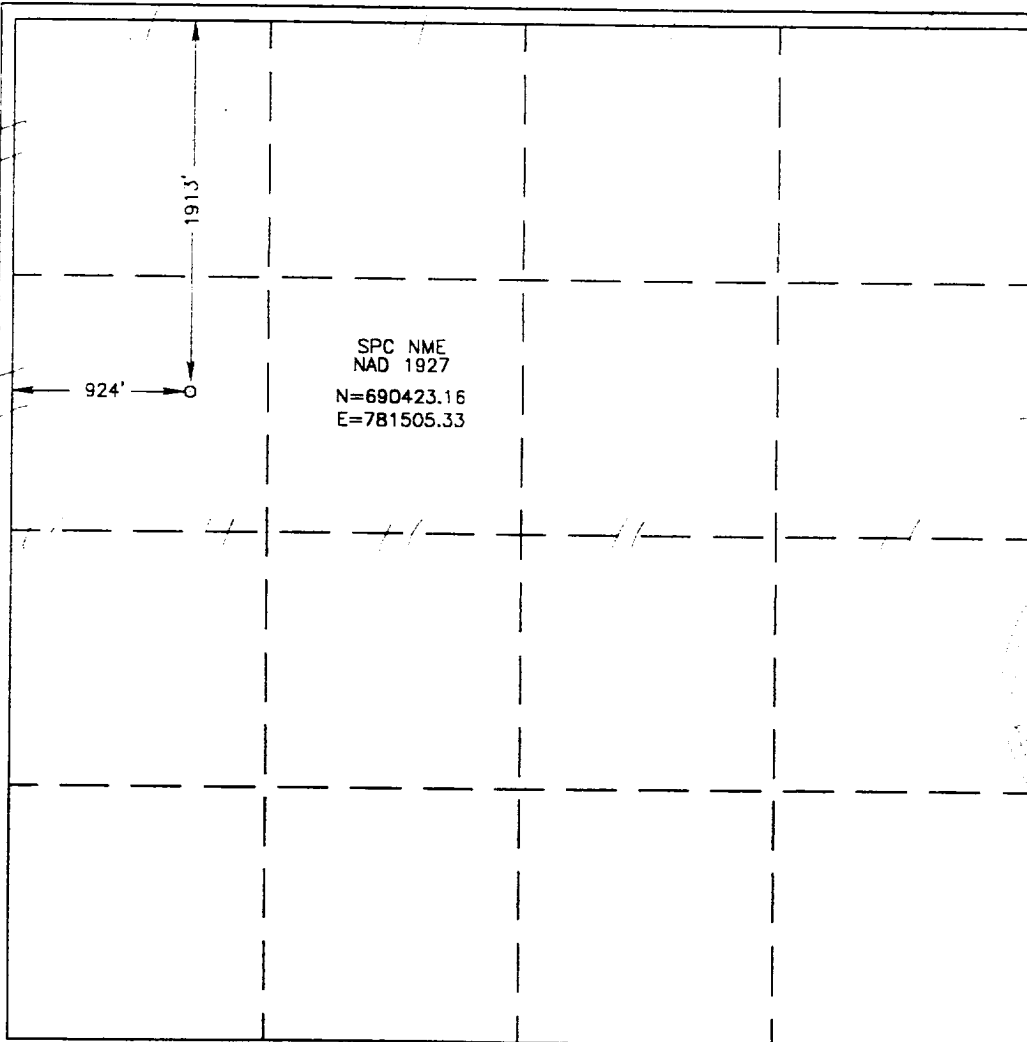
Surface Location

| | | | | | | | | | |
|---------------------------|----------------------|-------------------------|----------------------|---------|------------------------------|----------------------------------|-----------------------------|-------------------------------|----------------------|
| UL or lot No. E | Section 25 | Township 16-S | Range 35-E | Lot Idn | Feet from the 1913 | North/South line NORTH | Feet from the 924 | East/West line WEST | County LEA |
|---------------------------|----------------------|-------------------------|----------------------|---------|------------------------------|----------------------------------|-----------------------------|-------------------------------|----------------------|

Bottom Hole Location If Different From Surface

| | | | | | | | | | |
|-------------------------------|-----------------------------|--------------------------------|-----------|---------|---------------|------------------|---------------|----------------|--------|
| UL or lot No. | Section | Township | Range | Lot Idn | Feet from the | North/South line | Feet from the | East/West line | County |
| Dedicated Acres 320 | Joint or Infill N | Consolidation Code P | Order No. | | | | | | |

NO ALLOWABLE WILL BE ASSIGNED TO THIS COMPLETION UNTIL ALL INTERESTS HAVE BEEN CONSOLIDATED
OR A NON-STANDARD UNIT HAS BEEN APPROVED BY THE DIVISION



OPERATOR CERTIFICATION

I hereby certify that the information contained herein is true and complete to the best of my knowledge and belief.

L. Arnold
Signature

Lonnie Arnold
Printed Name

Production Manager
Title

March 15, 2002
Date

SURVEYOR CERTIFICATION

I hereby certify that the well location shown on this plat was plotted from field notes of actual surveys made by me or under my supervision, and that the same is true and correct to the best of my belief.

JULY 26, 2001

Date Surveyed **AWB**

Signature & Seal of Professional Surveyor

Ronald J. Sedson
RONALD J. SEDSON
01.11.0899

Certificate No. **RONALD J. SEDSON 3239**
GARY KIDDER 12841