

District I
1625 N. French Dr., Hobbs, NM 88240
District II
811 South First, Artesia, NM 88210
District III
1000 Rio Brazos Road, Aztec, NM 87410
District IV
2040 South Pacheco, Santa Fe, NM 87505

State of New Mexico
Energy Minerals and Natural Resources

Oil Conservation Division
2040 South Pacheco
Santa Fe, NM 87505

Form C-101
Revised March 17, 1999

Submit to appropriate District Office
State Lease - 6 Copies
Fee Lease - 5 Copies

☐ AMENDED REPORT

APPLICATION FOR PERMIT TO DRILL, RE-ENTER, DEEPEN, PLUGBACK, OR ADD A ZONE

EOG Resources, INC ¹ Operator Name and Address PO Box 2267 Midland, TX 79702		² OGRID Number 7377 ³ API Number 30-025-35916
⁴ Property Code 29770	⁵ Property Name Ponderosa State	⁶ Well No. 1

⁷ Surface Location

UL or lot no.	Section	Township	Range	Lot Idn	Feet from the	North/South line	Feet from the	East/West line	County
L	9	16S	32E		2250	South	930	West	Lea

⁸ Proposed Bottom Hole Location If Different From Surface

UL or lot no.	Section	Township	Range	Lot Idn	Feet from the	North/South line	Feet from the	East/West line	County
⁹ Proposed Pool 1 Wildcat Strawn					¹⁰ Proposed Pool 2				

¹¹ Work Type Code N ¹⁶ Multiple N	¹² Well Type Code O ¹⁷ Proposed Depth 12,200	¹³ Cable/Rotary R ¹⁸ Formation Strawn	¹⁴ Lease Type Code S ¹⁹ Contractor McVay	¹⁵ Ground Level Elevation 4344 ²⁰ Spud Date 5/28/02
--	---	--	---	--

²¹ Proposed Casing and Cement Program

Hole Size	Casing Size	Casing weight/foot	Setting Depth	Sacks of Cement	Estimated TOC
14-3/4	11-3/4	42#-H40	450	350	Surface
11	8-5/8	32#-J55	4000	1050	Surface
11	8-5/8	32#-HCK	4300		
7-7/8	5-1/2	17#-P110	12,200	1180	4500

²² Describe the proposed program. If this application is to DEEPEN or PLUG BACK, give the data on the present productive zone and proposed new productive zone.
Describe the blowout prevention program, if any. Use additional sheets if necessary.

11-3/4" - 200 sx Prem Plus, 3% Econolite, 2% Calcium Chloride, 0.25#/sx Flocele
150 sx Prem Plus, 2% CACL
8-5/8" - 800 sx Interfill C, .25#/sx Flocele
250 sx Prem Plus, 2% CACL
5-1/2" - 930 sx Premium, 3% Econolite, 5#/sx Salt (3%), .25#/sx Flocele
250 sx Prem 50/50 Poz mix "A", 2% Halliburton-Gel First 2%, 0.5% Hallad-322, 0.2% HR
BOP Diagram Attached

²³ I hereby certify that the information given above is true and complete to the best of my knowledge and belief.

Signature:

Printed name: Mike Francis

Title: Agent

Date:

5/15/02

Phone:

686-3714

OIL CONSERVATION DIVISION

Approved by:

ORIGINAL SIGNED BY

PAUL F. KAUTZ

PETROLEUM ENGINEER

Approval Date:

MAY 22 2002

Expiration Date:

Conditions of Approval:

Attached ☐

Permit Expires 1 Year From Approval
Date Unless Drilling Underway

DISTRICT I
1625 N. French Dr., Hobbs, NM 88240

State of New Mexico

Form C-102

Energy, Minerals, and Natural Resources Department

Revised August 15, 2000

DISTRICT II
1301 W. Grand Avenue, Artesia, NM 88210

Submit to Appropriate District Office

OIL CONSERVATION DIVISION

State Lease - 4 copies

DISTRICT III
1000 Rio Brazos Rd., Aztec, NM 87410

1220 South St. Francis Dr.

Fee Lease - 3 copies

DISTRICT IV
1220 S. St. Francis Dr., Santa Fe, NM 87505

Santa Fe, New Mexico 87505

☐ AMENDED REPORT

WELL LOCATION AND ACREAGE DEDICATION PLAT

¹ API Number 30-025-35916	² Pool Code ✓	³ Pool Name Wildcat (Strawn)
⁴ Property Code 29170	⁵ Property Name PONDEROSA STATE	⁶ Well Number 1
⁷ OGRID No. 7377	⁸ Operator Name EOG RESOURCES, INC.	⁹ Elevation 4344'

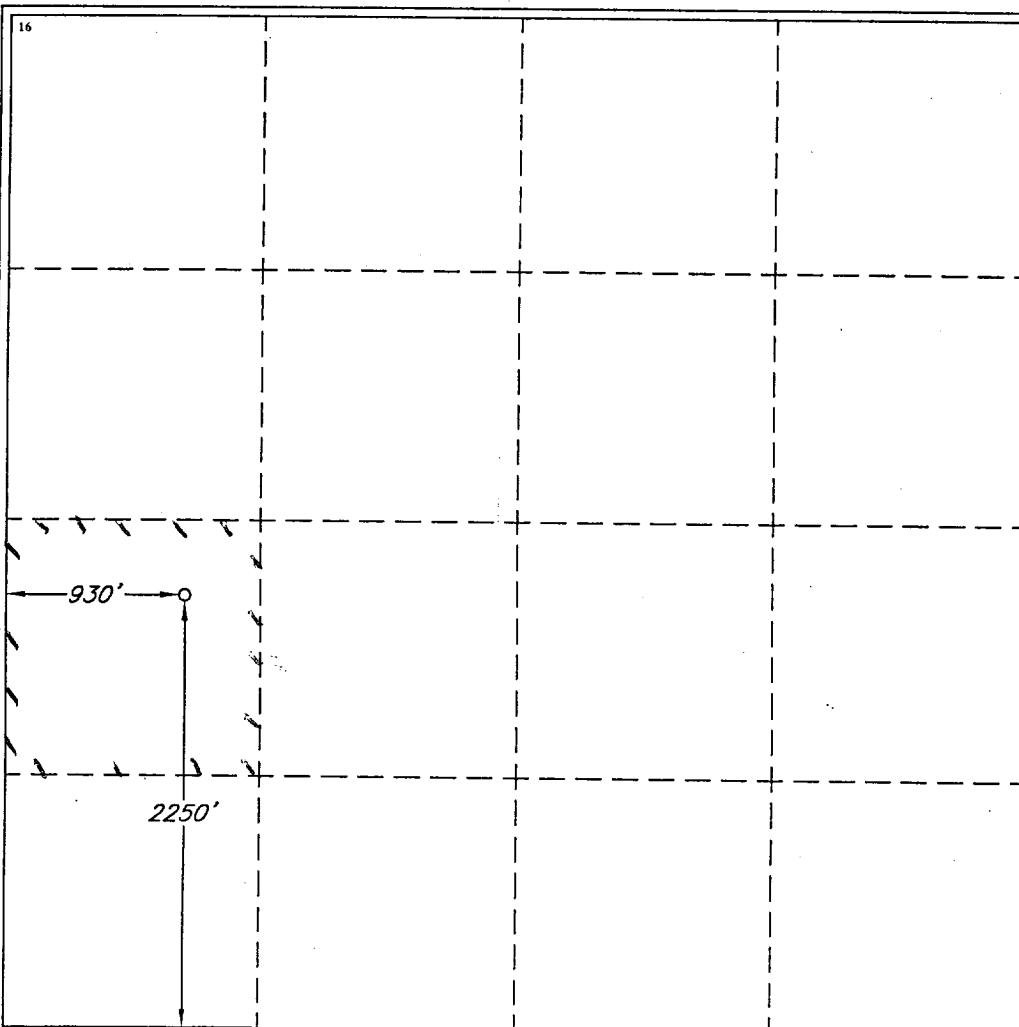
¹⁰ Surface Location

UL or lot no.	Section	Township	Range	Lot Idn	Feet from the	North/South line	Feet from the	East/West line	County
L	9	16 SOUTH	32 EAST, N.M.P.M.		2250'	SOUTH	930'	WEST	LEA

¹¹ Bottom Hole Location If Different From Surface

UL or lot no.	Section	Township	Range	Lot Idn	Feet from the	North/South line	Feet from the	East/West line	County
¹² Dedicated Acres 40	¹³ Joint or Infill	¹⁴ Consolidation Code	¹⁵ Order No.						

NO ALLOWABLE WELL BE ASSIGNED TO THIS COMPLETION UNTIL ALL INTERESTS HAVE BEEN CONSOLIDATED OR A NON-STANDARD UNIT HAS BEEN APPROVED BY THE DIVISION



¹⁷ OPERATOR CERTIFICATION

I hereby certify that the information contained herein is true and complete to the best of my knowledge and belief.

Mike Francis
Signature

Mike Francis
Printed Name

Agent
Title

5/15/02
Date

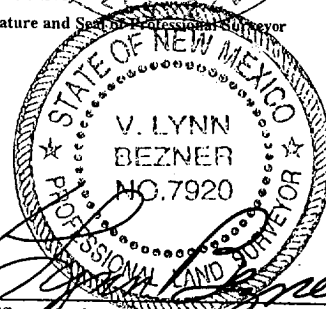
¹⁸ SURVEYOR CERTIFICATION

I hereby certify that the well location shown on this plat was plotted from field notes of actual survey made by me or under my supervision and that the same is true and correct to the best of my belief.

MAY 10, 2002

Date of Survey

Signature and Seal of Professional Surveyor



Certificate Number

V. L. BEZNER R.P.S. #7920

JOB #81748 / 97 NW / J.C.P.

GLF - 8/12/77
ABOVE DATE DOES NOT
INDICATE WHEN
CONFIDENTIAL LOGS
WILL BE RELEASED

EOG Resources, Inc.

Ponderosa State No. 1

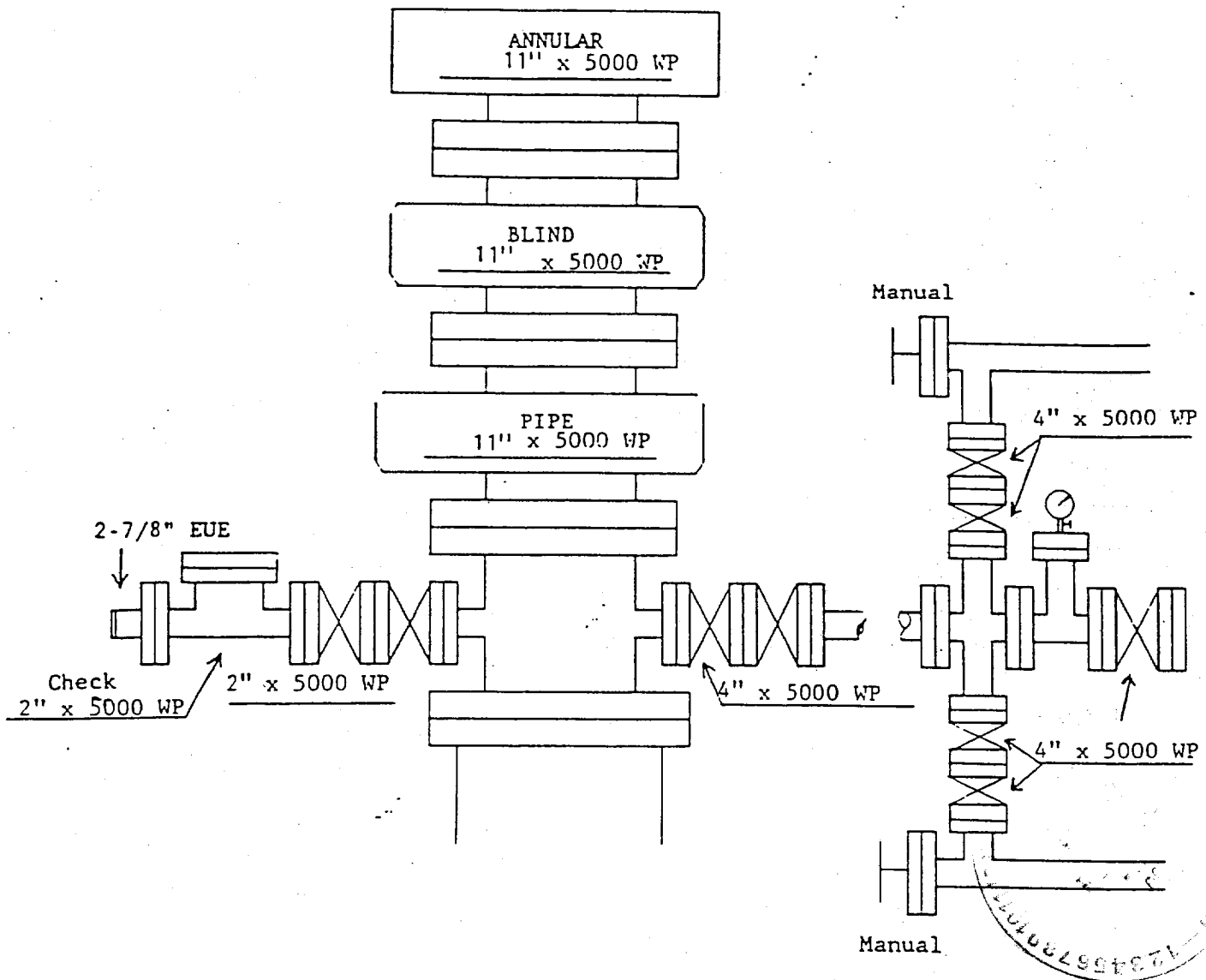


Exhibit 1

CONFIDENTIAL
WILL BE RELEASED
CONFIDENTIAL LOGS
INDICATE WHEN
ABOVE DATE DOES NOT
ELF - 8/12/92