

District I
1625 N. French Dr., Hobbs, NM 88240
District II
1301 W. Grand Avenue, Artesia, NM 88210
District III
1000 Rio Brazos Road, Aztec, NM 87410
District IV
1220 S. St. Francis Dr., Santa Fe, NM 87505

State of New Mexico
Energy Minerals and Natural Resources

Oil Conservation Division
1220 South St. Francis Dr.
Santa Fe, NM 87505

Form C-101
Revised March 17, 1999

Submit to appropriate District Office
State Lease - 6 Copies
Fee Lease - 5 Copies

☐ AMENDED REPORT

APPLICATION FOR PERMIT TO DRILL, RE-ENTER, DEEPEN, PLUGBACK, OR ADD A ZONE

¹ Operator Name and Address PURVIS OPERATING CO. P O BOX 11006 MIDLAND, TX 79702-8006		² OGRID Number 131559
		³ API Number 30-025-35917
³ Property Code 29771	⁵ Property Name Plum Sweet State Com	⁶ Well No. 1

⁷ Surface Location

UL or lot no.	Section	Township	Range	Lot Idn	Feet from the	North/South line	Feet from the	East/West line	County
J	8	15S	35E		1650'	South	1980	East	Lea

⁸ Proposed Bottom Hole Location If Different From Surface

UL or lot no.	Section	Township	Range	Lot Idn	Feet from the	North/South line	Feet from the	East/West line	County

⁹ Proposed Pool 1 WILDCAT 5163518R (GAS) Wildcat Mississippian	¹⁰ Proposed Pool 2
---------------------------------------------------------------------------------	-------------------------------

¹¹ Work Type Code N	¹² Well Type Code G	¹³ Cable/Rotary R	¹⁴ Lease Type Code S	¹⁵ Ground Level Elevation 4021'
¹⁶ Multiple No	¹⁷ Proposed Depth 13,200'	¹⁸ Formation Mississippian	¹⁹ Contractor Not Determined	²⁰ Spud Date August 1, 2002

²¹ Proposed Casing and Cement Program

Hole Size	Casing Size	Casing weight/foot	Setting Depth	Sacks of Cement	Estimated TOC
17 1/2"	13 3/8"	48#	400'	400 sks	Surface
12 1/4"	9 5/8"	36# - 40#	6200'	1400 sks	700'
8 3/4"	5 1/2"	17# - 20#	13,200'	800 sks	9500'

²² Describe the proposed program. If this application is to DEEPEN or PLUG BACK, give the data on the present productive zone and proposed new productive zone. Describe the blowout prevention program, if any. Use additional sheets if necessary.

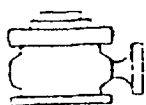
Drill 400' and case off all fresh water zones. Set intermediate to 6200' and cement off any water flows and corrosive zones. Drill to a total depth of 13,200' and DST prospective zones. Run open hole logs. Run production casing if justified and cement 600' above uppermost pay. Perforate and stimulate where justified.

A 5,000 psi BOPE will be installed on 9 5/8" casing and pressure tested before drilling deeper.

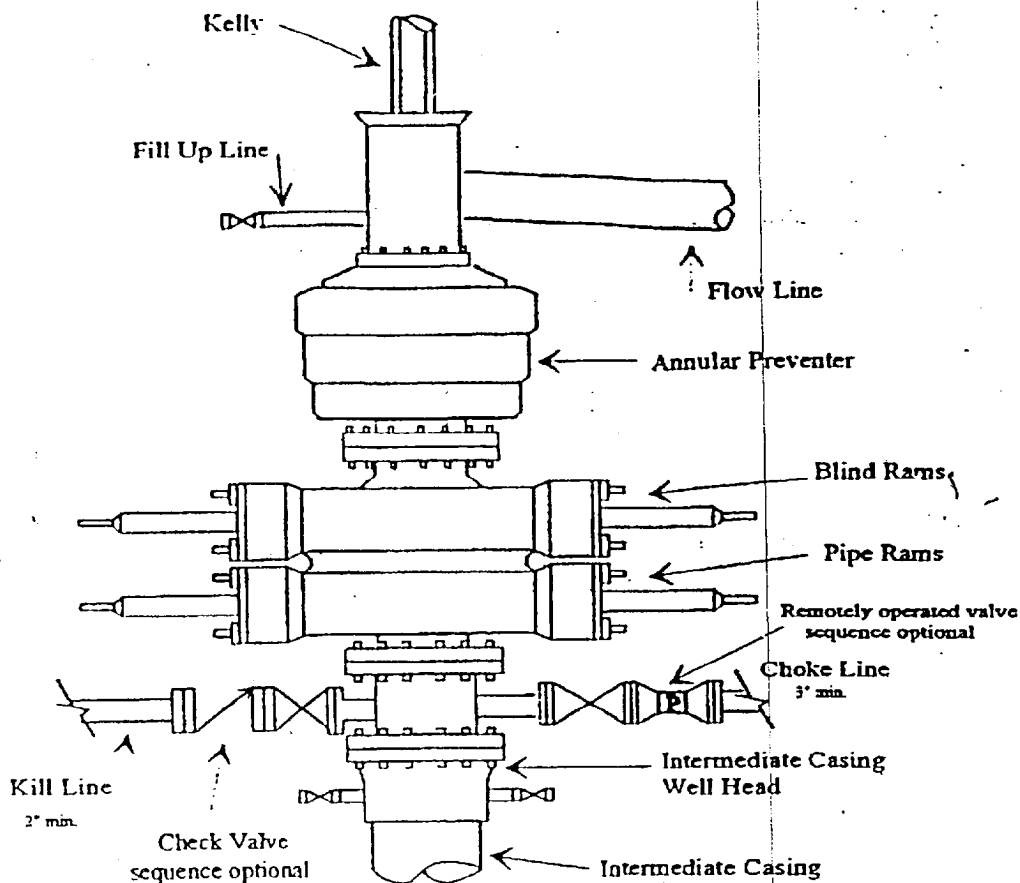
²³ I hereby certify that the information given above is true and complete to the best of my knowledge and belief. Signature: <i>Donnie E. Brown</i>		OIL CONSERVATION DIVISION	
Printed name: Donnie E. Brown		Approved by: ORIGINAL SIGNED BY	
Title: P.E.		Title: PAUL F. KAUTZ	
Date: May 15, 2002		Approval Date: MAY 22 2002	
Phone: 915-682-7346		Conditions of Approval: <input type="checkbox"/> Attached <input type="checkbox"/>	

Permit Expires 1 Year From Approval
Date Unless Drilling Underway

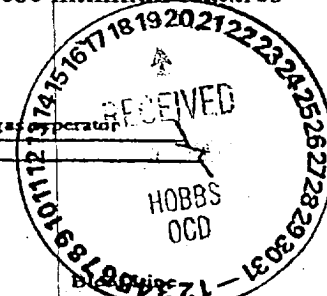
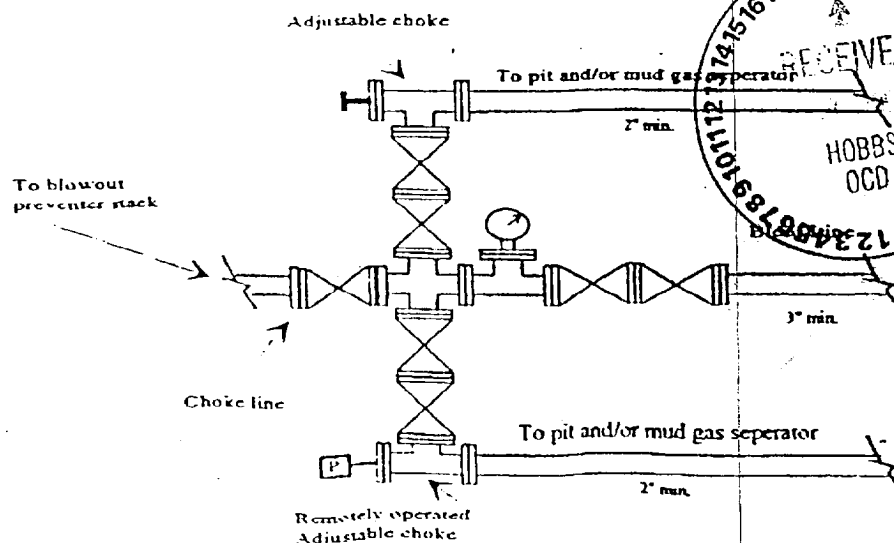
CS
MP



Typical 5,000 psi Pressure System Schematic Annular with Double Ram Preventer Stack



Typical 5,000 psi choke manifold assembly with at least these minimum features



DISTRICT I

P.O. Box 1000, Hobbs, NM 88241-1000

State of New Mexico

Energy, Minerals and Natural Resources Department

Form C-102

Revised February 10, 1994

Submit to Appropriate District Office

State Lease - 4 Copies

Fee Lease - 3 Copies

DISTRICT II

P.O. Drawer DD, Artesia, NM 88211-0719

OIL CONSERVATION DIVISION

P.O. Box 2088

Santa Fe, New Mexico 87504-2088

DISTRICT III

1000 Rio Brazos Rd., Aztec, NM 87410

DISTRICT IV

P.O. Box 2088, Santa Fe, N.M. 87504-2088

WELL LOCATION AND ACREAGE DEDICATION PLAT

☐ AMENDED REPORT

API Number 30-025-35917	Pool Code 97172	Pool Name 5153518P; Wildcat/Mississippian
Property Code 29771	Property Name PLUM SWEET STATE COM	Well Number 1
OGRID No. 131559	Operator Name PURVIS OPERATING COMPANY	Elevation 4021'

Surface Location

UL or lot No.	Section	Township	Range	Lot Idn	Feet from the	North/South line	Feet from the	East/West line	County
J	8	15-S	35-E		1650	SOUTH	1980	EAST	LEA

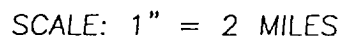
Bottom Hole Location If Different From Surface

UL or lot No.	Section	Township	Range	Lot Idn	Feet from the	North/South line	Feet from the	East/West line	County

Dedicated Acres	Joint or Infill	Consolidation Code	Order No.
320			

NO ALLOWABLE WILL BE ASSIGNED TO THIS COMPLETION UNTIL ALL INTERESTS HAVE BEEN CONSOLIDATED
OR A NON-STANDARD UNIT HAS BEEN APPROVED BY THE DIVISION

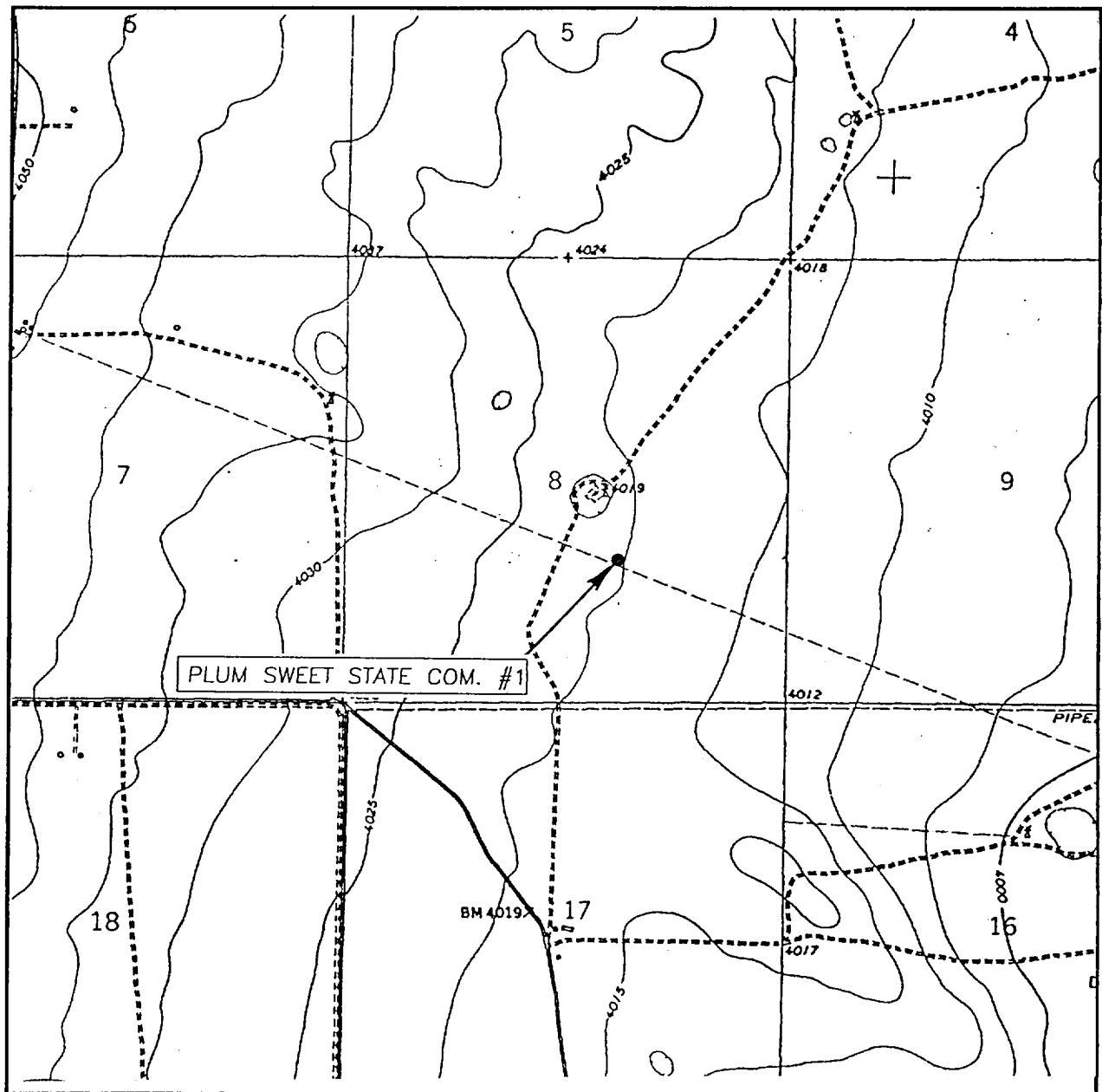
	OPERATOR CERTIFICATION I hereby certify the the information contained herein is true and complete to the best of my knowledge and belief. Signature Donnie E. Brown Printed Name P. E. Title May 15, 2002 Date
	SURVEYOR CERTIFICATION I hereby certify that the well location shown on this plat was plotted from field notes of actual surveys made by me or under my supervision, and that the same is true and correct to the best of my belief. MAY 10, 2002 Date Surveyed Signature & Seal of Professional Surveyor Certificate No. RONALD E. EDSON 3239 EDSON 12641



LEASE PLUM SWEET STATE COM

JOHN WEST SURVEYING
HOBBS, NEW MEXICO
(505) 393-3117

LOCATION VERIFICATION MAP



SCALE: 1" = 2000'

CONTOUR INTERVAL: 5'
HILLBURN CITY SW, N.M.

SEC. 8 TWP. 15-S RGE. 35-E

SURVEY N.M.P.M.

COUNTY LEA

DESCRIPTION 1650' FSL & 1980' FEL

ELEVATION 4021'

OPERATOR PURVIS OPERATING COMPANY

LEASE PLUM SWEET STATE COM.

U.S.G.S. TOPOGRAPHIC MAP
HILLBURN CITY SW, N.M.

JOHN WEST SURVEYING
HOBBS, NEW MEXICO
(505) 393-3117