

District I
1625 N. French Dr., Hobbs, NM 88240
District II
811 South First, Artesia, NM 88210
District III
1000 Rio Brazos Road, Aztec, NM 87410
District IV
2040 South Pacheco, Santa Fe, NM 87505

State of New Mexico
Energy Minerals and Natural Resources

Form C-101
Revised March 17, 1999

Oil Conservation Division
2040 South Pacheco
Santa Fe, NM 87505

Submit to appropriate District Office
State Lease - 6 Copies
Fee Lease - 5 Copies

☐ AMENDED REPORT

APPLICATION FOR PERMIT TO DRILL, RE-ENTER, DEEPEN, PLUGBACK, OR ADD A ZONE

¹ Operator Name and Address David H. Arrington Oil & Gas, Inc P.O. Box 2071 Midland, Texas 79702		² OGRID Number 005898
³ Property Code 26966		⁴ API Number 30-025-35975
⁵ Property Name Royal Stimulator		⁶ Well No. 2

⁷ Surface Location

UL or lot no.	Section	Township	Range	Lot Idn	Feet from the	North/South line	Feet from the	East/West line	County
E	31	15S	36E		2235'	North	330'	West	Lea

⁸ Proposed Bottom Hole Location If Different From Surface

UL or lot no.	Section	Township	Range	Lot Idn	Feet from the	North/South line	Feet from the	East/West line	County
L	31	15S	36E		1900'	South	1300'	West	Lea

⁹ Proposed Pool 1

Wildcat Mississippian

¹⁰ Proposed Pool 2

¹¹ Work Type Code N	¹² Well Type Code Gas	¹³ Cable/Rotary Rotary	¹⁴ Lease Type Code Fee	¹⁵ Ground Level Elevation 3927'
¹⁶ Multiple NO	¹⁷ Proposed Depth 13,600'	¹⁸ Formation Mississippian	¹⁹ Contractor Patterson	²⁰ Spud Date ASAP

²¹ Proposed Casing and Cement Program

Hole Size	Casing Size	Casing weight/foot	Setting Depth	Sacks of Cement	Estimated TOC
17 1/2"	13 3/8"	54 1/2#	470'	500 sxs	Surface
12 1/4"	9 5/8"	36/40#	4850'	1500 sxs	Surface
8 3/4"	5 1/2"	17/20#	13,600' md	900 sxs	9000'

²² Describe the proposed program. If this application is to DEEPEN or PLUG BACK, give the data on the present productive zone and proposed new productive zone.
Describe the blowout prevention program, if any. Use additional sheets if necessary.

Drill 17 1/2" hole to 470'. Set 13 3/8" casing at 470' and circulate cement to surface. Drill 12 1/4" hole to 4850'. Set 9 5/8" casing at 4850' and circulate cement to surface. Install and test BOP's, choke and manifold to 5000 psi. Test casing to 1500 psi. Drill 8 3/4" hole to 13,400 TVD (approx. 13,600' MD). Run 5 1/2" production casing to TD if justified.

Permit Expires 1 Year From Approval
Date Unless Drilling Underway

²³ I hereby certify that the information given above is true and complete to the best of my knowledge and belief.

Signature: *Danny Ledford*
Printed name: Danny Ledford

Title: Geologist

Date: 08.14.02

Phone: (915) 682-6685

OIL CONSERVATION DIVISION

Approved by:

ORIGINAL SIGNED BY
PAUL F. KAUTZ
PETROLEUM ENGINEER

Title:

Approval AUG 21 2002

Expiration Date:

Conditions of Approval:

Attached ☐

DISTRICT II
P. O. Drawer DD
Artesia, NM 88211-0719

OIL CONSERVATION DIVISION
P. O. Box 2088
Santa Fe, New Mexico 87504-2088

Submit to the Appropriate
District Office
State Lease - 4 copies
Fee Lease - 3 copies

DISTRICT III
1000 Rio Brazos Rd.
Aztec, NM 87410

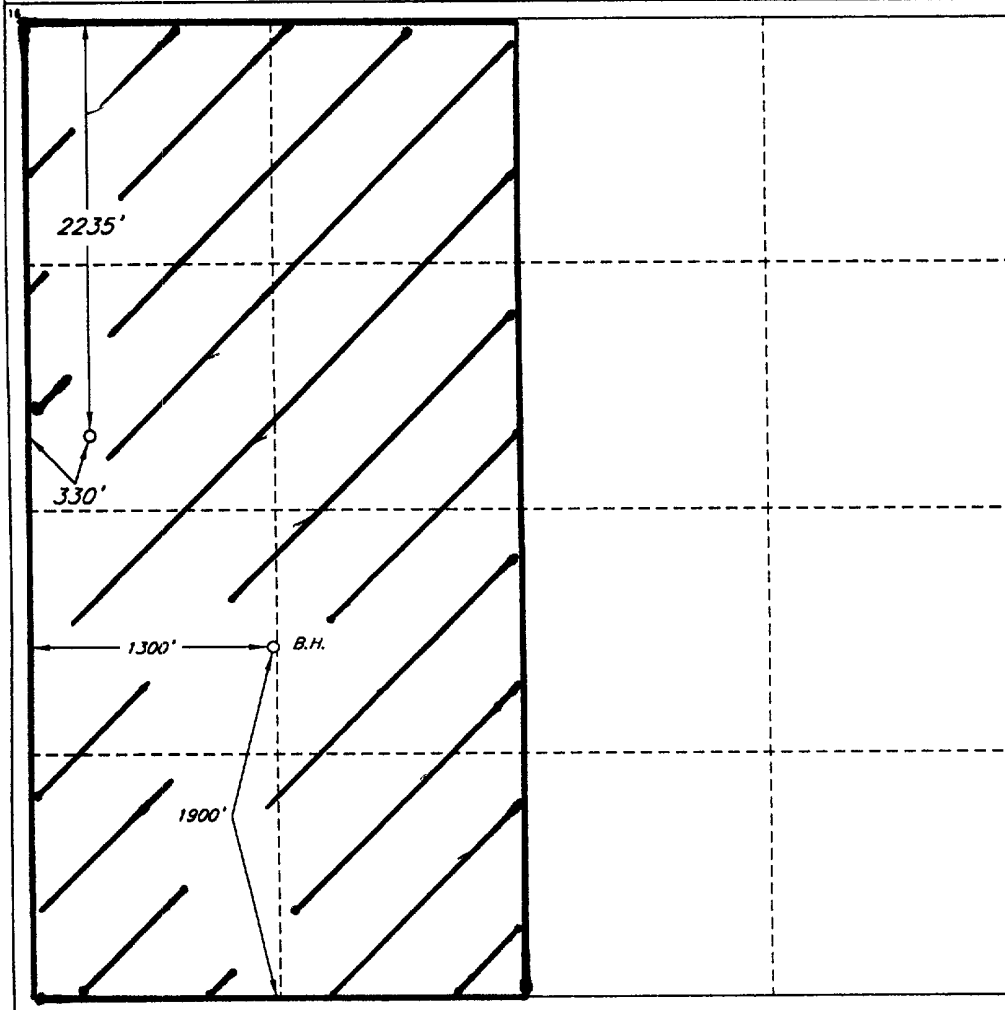
DISTRICT IV
P. O. Box 2088
Santa Fe, NM 87507-2088

WELL LOCATION AND ACREAGE DEDICATION PLAT

☐ AMENDED REPORT

1 API Number 30-025-35975		2 Pool Code ✓		3 Pool Name Wildcat, Mississippian					
4 Property Code 26966		5 Property Name ROYAL STIMULATOR						6 Well Number 2	
7 OGRID No. 5898		8 Operator Name DAVID H. ARRINGTON OIL & GAS						9 Elevation 3927'	
10 SURFACE LOCATION									
UL or lot no. E	Section 31	Township 15 SOUTH	Range 36 EAST, N.M.P.M.	Lot lda	Feet from the 2235'	North/South line NORTH	Feet from the 330'	East/West line WEST	County LEA
11 BOTTOM HOLE LOCATION IF DIFFERENT FROM SURFACE									
UL or lot no. L	Section 31	Township 15 SOUTH	Range 36 EAST, N.M.P.M.	Lot lda	Feet from the 1900'	North/South line SOUTH	Feet from the 1300'	East/West line WEST	County LEA
12 Dedicated Acres 320		13 Joint or Infill		14 Consolidation Code		15 Order No.			

NO ALLOWABLE WELL BE ASSIGNED TO THIS COMPLETION UNTIL ALL INTERESTS HAVE BEEN CONSOLIDATED OR A NON-STANDARD UNIT HAS BEEN APPROVED BY THE DIVISION



OPERATOR CERTIFICATION

*I hereby certify that the information
contained herein is true and complete
to the best of my knowledge and belief.*

Signature

Printed Name _____

Title

Date _____

SURVEYOR CERTIFICATION

I hereby certify that the well location shown on this plot was plotted from field notes of actual surveys made by me or under my supervision, and that the same is true and correct to the best of my belief.

REVISED: AUGUST 9, 2001

Date of Survey

MARCH 28, 2001

Signature and Seal of Professional Surveyor

Certificate No.

V. L. BEZNER R.P.S. #7920

JOB #75424-R / 96 NE / V.H.B.