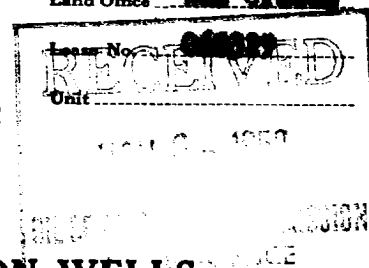


(SUBMIT IN TRIPLICATE)

UNITED STATES  
DEPARTMENT OF THE INTERIOR  
GEOLOGICAL SURVEYLand Office Las Cruces

## SUNDRY NOTICES AND REPORTS ON WELLS

|   |   |
|---|---|
| NOTICE OF INTENTION TO DRILL.....                   | SUBSEQUENT REPORT OF WATER SHUT-OFF.....        |
| NOTICE OF INTENTION TO CHANGE PLANS.....            | SUBSEQUENT REPORT OF SHOOTING OR ACIDIZING..... |
| NOTICE OF INTENTION TO TEST WATER SHUT-OFF.....     | SUBSEQUENT REPORT OF ALTERING CASING.....       |
| NOTICE OF INTENTION TO RE-DRILL OR REPAIR WELL..... | SUBSEQUENT REPORT OF REDRILLING OR REPAIR.....  |
| NOTICE OF INTENTION TO SHOOT OR ACIDIZE.....        | SUBSEQUENT REPORT OF ABANDONMENT..... <b>X</b>  |
| NOTICE OF INTENTION TO PULL OR ALTER CASING.....    | SUPPLEMENTARY WELL HISTORY.....                 |
| NOTICE OF INTENTION TO ABANDON WELL.....            |   |

(INDICATE ABOVE BY CHECK MARK NATURE OF REPORT, NOTICE, OR OTHER DATA)

Maljamar, New Mexico November 6, 19 50

MITCHELL "B" LEASE

Well No. 1 is located 660 ft. from [S] line and 660 ft. from [E] line of sec. 17SE 1/4, NE 1/4, Sec 17

(1/4 Sec. and Sec. No.)

17S

(Twp.)

30E

(Range)

N.M.P.M.

(Meridian)

Maljamar

(Field)

Las

(County or Subdivision)

New Mexico

(State or Territory)

The elevation of the derrick floor above sea level is 4048.2 ft.

## DETAILS OF WORK

(State names of and expected depths to objective sands; show sizes, weights, and lengths of proposed casings; indicate mudding jobs, cementing points, and all other important proposed work)

On 11-4-50 sized and preparatory to plugging and then filled hole with cement from Total Depth of 5440' to 5350' with 18 sacks of cement. Hole was filled with mud from 5350' to 4125'. Then spotted a cement plug from 4125' to 3745' with 175 sacks of cement. Filled hole with mud from 3745' to 3657'. Then spotted another cement plug from 3657' to 3611' with 10 sacks of cement. Hole was then filled with mud from 3611' to surface of ground. All cement was pumped in by Halliburton Oil Well Cementing Company. All casing was left in hole. A marker of 4" Pipe was welded in a snags nipple and screwed in the top of the 7" Casing.

Well was plugged and abandoned on November 4, 1950.

I understand that this plan of work must receive approval in writing by the Geological Survey before operations may be commenced.

Company Keweenaw Oil CompanyAddress P. O. Box 207Maljamar, New MexicoBy R. A. M. SillTitle District Superintendent