

NEW MEXICO OIL CONSERVATION COMMISSION

Santa Fe, New Mexico

NOTICE OF INTENTION TO DRILL OR RECOMPLETE

Notice must be given to the District Office of the Oil Conservation Commission and approval obtained before drilling or recompletion begins. If changes in the proposed plan are considered advisable, a copy of this notice showing such changes will be returned to the sender. Submit this notice in QUINTUPLICATE. One copy will be returned following approval. See additional instructions in Rules and Regulations of the Commission.

Roswell, N. M. (Place)

January 31, 1956 (Date)

OIL CONSERVATION COMMISSION  
SANTA FE, NEW MEXICO

Gentlemen:

You are hereby notified that it is our intention to commence the (Drilling) ~~Recompletion~~ of a well to be known as

Neville G. Penrose, Inc. (Company or Operator)

Resler-State (Lease)

Well No. 1, in K (Unit) The well is

located 1980 feet from the West line and 1980 feet from the

South line of Section 14, T. 18 S., R. 33 E., NMPM.

(GIVE LOCATION FROM SECTION LINE) UNDESIGNATED Pool, Lea County

If State Land the Oil and Gas Lease is No. E-744

If patented land the owner is

Address

We propose to drill well with drilling equipment as follows: Set surface pipe with

spudder; rotary to 1650', cable tools to TD.

The status of plugging bond is Blanket bond

Drilling Contractor Carper Drilling Co., Artesia, N. M.

We intend to complete this well in the Queen

formation at an approximate depth of 4400 feet.

CASING PROGRAM

We propose to use the following strings of Casing and to cement them as indicated:

Size of Hole	Size of Casing	Weight per Foot	New or Second Hand	Depth	Sacks Cement
16"	13-3/8	48#	S-H	200'	set
10-3/4	8-5/8	24#	S-H	1650'	100
7-3/4	5 1/2	15.5#	New	4400'	150

If changes in the above plans become advisable we will notify you immediately.

ADDITIONAL INFORMATION (If recompletion give full details of proposed plan of work.)

Approved \_\_\_\_\_, 19\_\_\_\_

Except as follows If commercial production is found and

it is to be completed, cement must be circulated  
around top of 8-5/8" by use of small 1 D string in  
gulve from 150' to surface.

OIL CONSERVATION COMMISSION

By \_\_\_\_\_

Title \_\_\_\_\_

Sincerely yours,

NEVILLE G. PENROSE, INC. (Company or Operator)

By \_\_\_\_\_

Position Geologist

Send Communications regarding well to

Name Henry Bright, Supt.

Address N. G. Penrose, Inc.

Lunice, N. M.

NEW MEXICO  
OIL CONSERVATION COMMISSION

Form C-128

Well Location and/or Gas Proration Plat

Date February 3, 1956

Operator Neville G. Penrose Inc. Lease Resler State

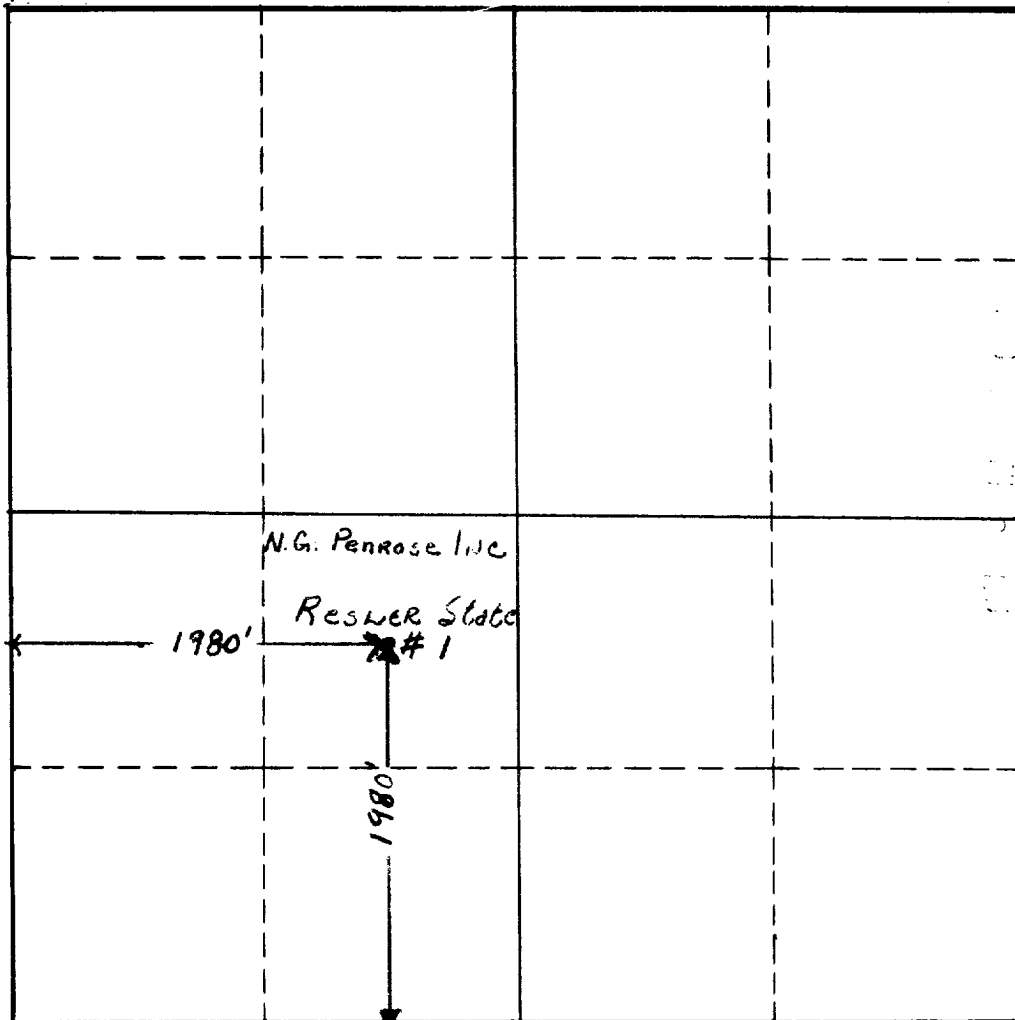
Well No. 1 Section 14 Township 18S Range 33E NMPM

Located 1980 Feet From South Line, 1980 Feet From West Line,

Lea County, New Mexico. G. L. Elevation 3919.5

Name of Producing Formation Test of Queen Pool Undesignated Dedicated Acreage 40

(Note: All distances must be from outer boundaries of Section)



SCALE: 1"=1000'

1. Is this Well a Dual Comp. ? Yes    No X.
2. If the answer to Question 1 is yes, are there any other dually completed wells within the dedicated acreage? Yes    No   .

This is to certify that the above plat was prepared from field notes of actual surveys made by me or under my supervision and that the same are true and correct to the best of my knowledge and belief.

Name T.H. Bright T.H. Bright  
Position Production Supt.  
Representing Neville G. Penrose Inc.  
Address Box 988 Eunice, New Mexico

Date Surveyed February 7, 1956  
John W. West  
Registered Professional Engineer and/or  
Land Surveyor