

NUMBER OF COPIES RECEIVED	
DISTRIBUTION	
SANTA FE	
FILE	
U.S.G.S.	
LAND OFFICE	
TRANSPORTER	OIL
	GAS
PRODUCTION OFFICE	
OPERATOR	

NEW MEXICO OIL CONSERVATION COMMISSION  
Santa Fe, New Mexico

Form C-101  
Revised (12/1/55)

## NOTICE OF INTENTION TO DRILL

Notice must be given to the District Office of the Oil Conservation Commission and approval obtained before drilling or recompletion begins. If changes in the proposed plan are considered advisable, a copy of this notice showing such changes will be returned to the sender. Submit this notice in QUINTUPPLICATE. One copy, 1961 AUG 3, returned (showing approval. See additional instructions in Rules and Regulations of the Commission. If State Land submit 6 Copies Attach Form C-128 in triplicate to first 3 copies of form C-101

415 Gulf Building, Midland, Texas

July 31, 1961

(Place)

(Date)

OIL CONSERVATION COMMISSION  
SANTA FE, NEW MEXICO

Gentlemen:

You are hereby notified that it is our intention to commence the Drilling of a well to be known as

**Inca Drilling Company**

(Company or Operator)

**Angle State**

(Lease)

Well No. **1**, in **C** (Unit) The well is

located **1980** feet from the **West** line and **660** feet from the

**North**

line of Section **9**, T. **17 South**, R. **34 East**, NMPM.

(GIVE LOCATION FROM SECTION LINE)

**Vacuum**

Pool,

**Lee**

County

If State Land the Oil and Gas Lease is No. **E-794**

If patented land the owner is

Address

We propose to drill well with drilling equipment as follows: **Rotary to Total Depth.**

The status of plugging bond is **Bond has been submitted.**

Drilling Contractor **Unknown**

We intend to complete this well in the **San Andres** formation at an approximate depth of **4800** feet.

### CASING PROGRAM

We propose to use the following strings of Casing and to cement them as indicated:

Size of Hole	Size of Casing	Weight per Foot	New or Second Hand	Depth	Sacks Cement
<b>11"</b>	<b>8-5/8"</b>	<b>204</b>	<b>New</b>	<b>350'</b>	<b>275</b>
<b>7-7/8"</b>	<b>4-1/2"</b>	<b>9.54</b>	<b>New</b>	<b>4800'</b>	<b>300</b>

If changes in the above plans become advisable we will notify you immediately.

ADDITIONAL INFORMATION (If recompletion give full details of proposed plan of work.)

Approved....., 19.....  
Except as follows:

CEMENT MUST BE CIRCULATED LEAST  
87% CASING.  
OIL CONSERVATION COMMISSION

By.....

Sincerely yours,

**Inca Drilling Company**  
(Company or Operator)

By **Joe M. Parsley**

Position **Petroleum Engineer**

Send Communications regarding well to

Name **Inca Drilling Company**

Address **415 Gulf Bldg., Midland, Texas**

NEW MEXICO OIL CONSERVATION COMMISSION  
WELL LOCATION AND ACREAGE DEDICATION PLAT

FORM C-128  
Revised 5/1/57

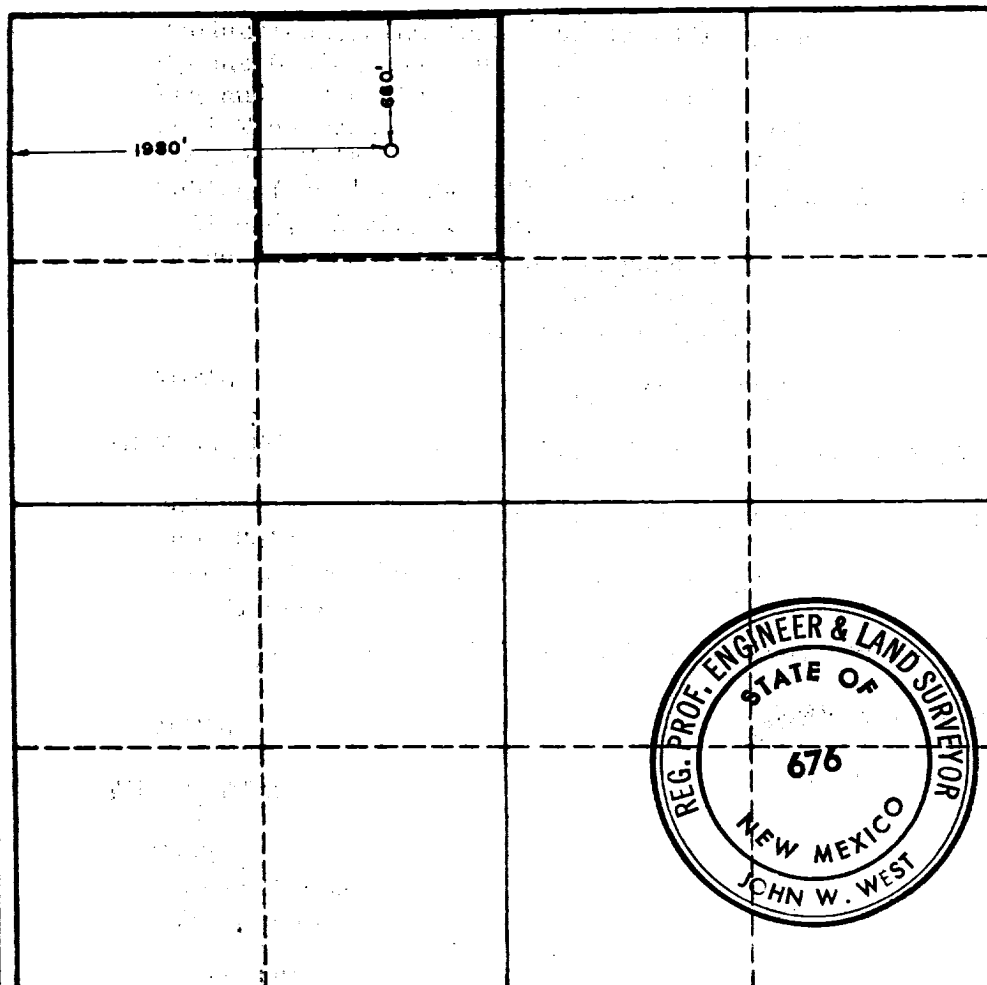
SEE INSTRUCTIONS FOR COMPLETING THIS FORM ON THE REVERSE SIDE

Operator <b>INCA DRILLING COMPANY</b>		Lease <b>ANGLE STATE</b>		Well No. <b>1</b>
Unit Letter <b>C</b>	Section <b>9</b>	Township <b>17 SOUTH</b>	Range <b>34 EAST</b>	County <b>LEA</b>
Actual Footage Location of Well: <b>1980</b> feet from the <b>WEST</b> line and <b>660</b> feet from the <b>NORTH</b> line				
Ground Level Elev. <b>4083.8'</b>	Producing Formation <b>San Andres</b>	Pool <b>Vacuum</b>	Dedicated Acreage: <b>40</b> Acres	

1. Is the Operator the only owner in the dedicated acreage outlined on the plat below? YES ☒ NO ☐ ("Owner" means the person who has the right to drill into and to produce from any pool and to appropriate the production either for himself or for himself and another. (65-3-29 (e) NMSA 1935 Comp.)
2. If the answer to question one is "no," have the interests of all the owners been consolidated by communitization agreement or otherwise? YES ☐ NO ☐ If answer is "yes," Type of Consolidation \_\_\_\_\_
3. If the answer to question two is "no," list all the owners and their respective interests below:

Owner	Land Description

SECTION B



CERTIFICATION

I hereby certify that the information in SECTION A above is true and complete to the best of my knowledge and belief

Name **John W. West**  
Position **Professional Engineer**  
Company **Inca Drilling Company**

Date **July 21, 1961**

I hereby certify that the well location shown on the plat in SECTION B was plotted from field notes of actual surveys made by me or under my supervision, and that the same is true and correct to the best of my knowledge and belief.

Date **July 21, 1961**

Registered Professional Engineer and/or Land Surveyor, **JOHN W. WEST**

**John W. West**

Certificate No.  
N.M. - P.E. & L.S. NO. 676

0 330 660 990 1320 1650 1980 2310 2640 2970 3300 3600