

DISTRICT I
P.O. Box 1980, Hobbs, NM 88240

DISTRICT II
P.O. Drawer DD, Artesia, NM 88210

DISTRICT III
1000 Rio Brazos Rd., Aztec, NM 87410

OIL CONSERVATION DIVISION
P.O. Box 2088
Santa Fe, New Mexico 87504-2088

WELL API NO.

5. Indicate Type of Lease
STATE ☒ FEE ☐

6. State Oil & Gas Lease No.
B-1520

7. Lease Name or Unit Agreement Name

BRIDGES STATE

8. Well No.
69

9. Pool name or Wildcat
VACUUM GRAYBURG SAN ANDRES

SUNDRY NOTICES AND REPORTS ON WELLS
(DO NOT USE THIS FORM FOR PROPOSALS TO DRILL OR TO DEEPEN OR PLUG BACK TO A DIFFERENT RESERVOIR. USE "APPLICATION FOR PERMIT" (FORM C-101) FOR SUCH PROPOSALS.)

1. Type of Well:
OIL WELL ☒ GAS WELL ☐ OTHER ☐

2. Name of Operator
Mobil Producing TX. & N.M. Inc., Thru its Agent Mobil Expl. & Prod. U.S.

3. Address of Operator
Box 333 714 Highland Ave. Santa Fe, NM 87502

4. Well Location
Unit Letter F : 1900 Feet From The NORTH Line and 1980 Feet From The WEST Line
Section 13 Township 17-S Range 34-E NMPM LEA County

10. Elevation (Show whether DF, RKB, RT, GR, etc.)
4021' GL

11. Check Appropriate Box to Indicate Nature of Notice, Report, or Other Data
NOTICE OF INTENTION TO:

PERFORM REMEDIAL WORK ☐

PLUG AND ABANDON ☒

TEMPORARILY ABANDON ☐

CHANGE PLANS ☐

PULL OR ALTER CASING ☐

OTHER: ☐

SUBSEQUENT REPORT OF:

REMEDIAL WORK ☐ ALTERING CASING ☐

COMMENCE DRILLING OPNS. ☐ PLUG AND ABANDONMENT ☐

CASING TEST AND CEMENT JOB ☐

OTHER: ☐

12. Describe Proposed or Completed Operations (Clearly state all pertinent details, and give pertinent dates, including estimated date of starting any proposed work) SEE RULE 1103.

MIRU Mayo Marrs. NU BOP
Circ. wellbore w/10 ppg gelled brine
Cut 5 1/2 @ + 2600'
Set 20 sx (100') cmt plug across 5 1/2 csg stub (2550-2650')
Set 42 sx (150') cmt plug @ top salt (1650-1800')
Set 35 sx (100') cmt plug across 10 3/4 csg shoe (775-875'), Tag plug
Set 10 sx (25') cmt plug @ surface
Cut csg 3' below surface, weld plate + marker.
Clean location.

Bridges State #69 P&A'd

I hereby certify that the information above is true and complete to the best of my knowledge and belief.

SIGNATURE D.W. Parks Jr. TITLE REGULATORY TECHNICIAN DATE 02-22-90

TYPE OR PRINT NAME D.W. PARKS, JR. TELEPHONE NO. 688-2548

(This space for State Use)

APPROVED BY _____ TITLE _____ DATE _____

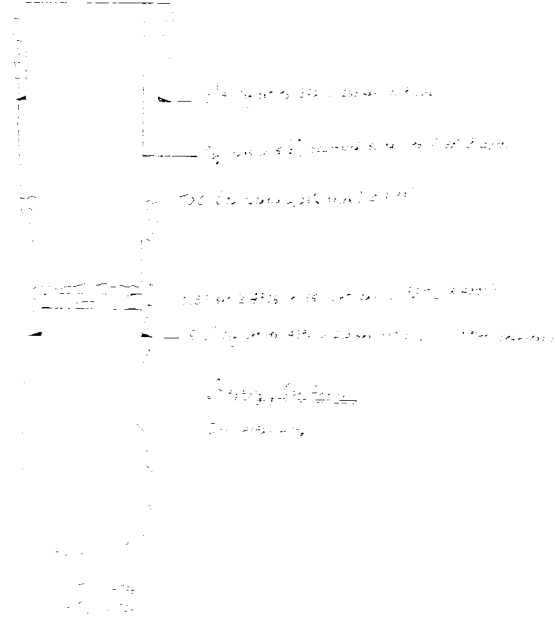
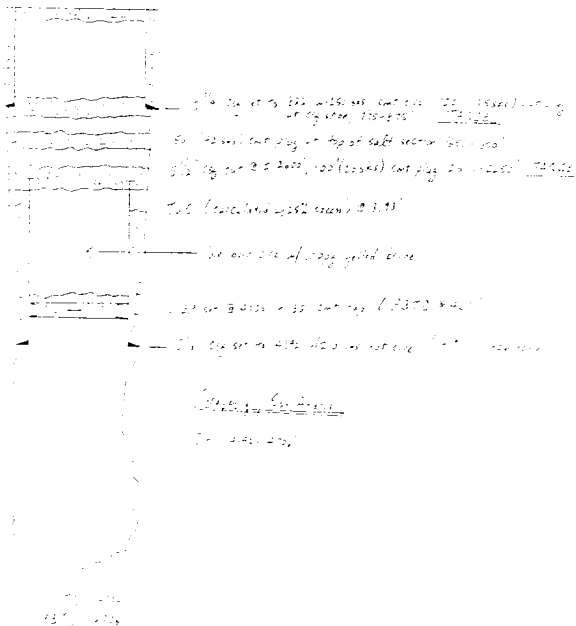
CONDITIONS OF APPROVAL, IF ANY:

DATE 12-15-89 WELL NO. 11 LEASE Golden State
 FIELD San Joaquin Hills LOCATION San Joaquin Hills
 CHARTER 12-15-89
 TIME 12:00
 ZERO 12:00

DATE 12-15-89 WELL NO. 11 LEASE Golden State
 FIELD San Joaquin Hills LOCATION San Joaquin Hills
 CHARTER 12-15-89
 TIME 12:00
 ZERO 12:00

PRESENT WELLBORE DIAGRAM

PRESENT WELLBORE DIAGRAM



RECOMMENDED PLUG AND ABANDON PROCEDURE

WELL: San Joaquin Hills 11 STATUS: Plugged
 FLUIDS IN WELL: Oil, Gas, Water

 Charge all work to 7380 - 56772 - 02 (No OFE #)

Job Safety Requirements: In completing the subject work, all contractors should follow the safety procedures outlined in RP44, RP54, and the Mobil (Midland Division) Well Servicing Safety Procedure Manual dated March 1989.

For potential environmental problems (Migratory Bird Protection), any plug used for workovers are to be cleaned of any oil residue immediately after activity has ceased or be netted.

Notify NMCD (797 6161) 24 hrs prior to P&A.

1. Run wellbore inspection device from Mayo Burns Logging Borehole for casing 489 and measuring a depth of 1700 feet. Give to Mike Huoley, Contractor.
2. Bleed off pressure to closed tank.
3. Allow Mayo Burns Logging Borehole.
4. Mix 500 lbs of bulking 1 1/2" plug, test.
5. If necessary, add sand and cement.
6. Put 1 1/2" plug in 1700' and run down.
7. Set 100' (20 lbs) cement plug across 5 1/2" and stub. (3550-2750').
8. Set 100' (20 lbs) cement plug across 10 3/4" and stub. (3550-2750').
9. Set 100' (20 lbs) cement plug across 10 3/4" and stub. (3550-2750').
10. Set 100' (20 lbs) cement plug across 10 3/4" and stub. (3550-2750').
11. Set 100' (20 lbs) cement plug across 10 3/4" and stub. (3550-2750').
12. Set 100' (20 lbs) cement plug across 10 3/4" and stub. (3550-2750').
13. Set 100' (20 lbs) cement plug across 10 3/4" and stub. (3550-2750').
14. Set 100' (20 lbs) cement plug across 10 3/4" and stub. (3550-2750').
15. Set 100' (20 lbs) cement plug across 10 3/4" and stub. (3550-2750').
16. Set 100' (20 lbs) cement plug across 10 3/4" and stub. (3550-2750').
17. Set 100' (20 lbs) cement plug across 10 3/4" and stub. (3550-2750').
18. Set 100' (20 lbs) cement plug across 10 3/4" and stub. (3550-2750').
19. Set 100' (20 lbs) cement plug across 10 3/4" and stub. (3550-2750').
20. Set 100' (20 lbs) cement plug across 10 3/4" and stub. (3550-2750').
21. Set 100' (20 lbs) cement plug across 10 3/4" and stub. (3550-2750').
22. Set 100' (20 lbs) cement plug across 10 3/4" and stub. (3550-2750').
23. Set 100' (20 lbs) cement plug across 10 3/4" and stub. (3550-2750').
24. Set 100' (20 lbs) cement plug across 10 3/4" and stub. (3550-2750').
25. Set 100' (20 lbs) cement plug across 10 3/4" and stub. (3550-2750').
26. Set 100' (20 lbs) cement plug across 10 3/4" and stub. (3550-2750').
27. Set 100' (20 lbs) cement plug across 10 3/4" and stub. (3550-2750').
28. Set 100' (20 lbs) cement plug across 10 3/4" and stub. (3550-2750').
29. Set 100' (20 lbs) cement plug across 10 3/4" and stub. (3550-2750').
30. Set 100' (20 lbs) cement plug across 10 3/4" and stub. (3550-2750').
31. Set 100' (20 lbs) cement plug across 10 3/4" and stub. (3550-2750').
32. Set 100' (20 lbs) cement plug across 10 3/4" and stub. (3550-2750').
33. Set 100' (20 lbs) cement plug across 10 3/4" and stub. (3550-2750').
34. Set 100' (20 lbs) cement plug across 10 3/4" and stub. (3550-2750').
35. Set 100' (20 lbs) cement plug across 10 3/4" and stub. (3550-2750').
36. Set 100' (20 lbs) cement plug across 10 3/4" and stub. (3550-2750').
37. Set 100' (20 lbs) cement plug across 10 3/4" and stub. (3550-2750').
38. Set 100' (20 lbs) cement plug across 10 3/4" and stub. (3550-2750').
39. Set 100' (20 lbs) cement plug across 10 3/4" and stub. (3550-2750').
40. Set 100' (20 lbs) cement plug across 10 3/4" and stub. (3550-2750').
41. Set 100' (20 lbs) cement plug across 10 3/4" and stub. (3550-2750').
42. Set 100' (20 lbs) cement plug across 10 3/4" and stub. (3550-2750').
43. Set 100' (20 lbs) cement plug across 10 3/4" and stub. (3550-2750').
44. Set 100' (20 lbs) cement plug across 10 3/4" and stub. (3550-2750').
45. Set 100' (20 lbs) cement plug across 10 3/4" and stub. (3550-2750').
46. Set 100' (20 lbs) cement plug across 10 3/4" and stub. (3550-2750').
47. Set 100' (20 lbs) cement plug across 10 3/4" and stub. (3550-2750').
48. Set 100' (20 lbs) cement plug across 10 3/4" and stub. (3550-2750').
49. Set 100' (20 lbs) cement plug across 10 3/4" and stub. (3550-2750').
50. Set 100' (20 lbs) cement plug across 10 3/4" and stub. (3550-2750').
51. Set 100' (20 lbs) cement plug across 10 3/4" and stub. (3550-2750').
52. Set 100' (20 lbs) cement plug across 10 3/4" and stub. (3550-2750').
53. Set 100' (20 lbs) cement plug across 10 3/4" and stub. (3550-2750').
54. Set 100' (20 lbs) cement plug across 10 3/4" and stub. (3550-2750').
55. Set 100' (20 lbs) cement plug across 10 3/4" and stub. (3550-2750').
56. Set 100' (20 lbs) cement plug across 10 3/4" and stub. (3550-2750').
57. Set 100' (20 lbs) cement plug across 10 3/4" and stub. (3550-2750').
58. Set 100' (20 lbs) cement plug across 10 3/4" and stub. (3550-2750').
59. Set 100' (20 lbs) cement plug across 10 3/4" and stub. (3550-2750').
60. Set 100' (20 lbs) cement plug across 10 3/4" and stub. (3550-2750').
61. Set 100' (20 lbs) cement plug across 10 3/4" and stub. (3550-2750').
62. Set 100' (20 lbs) cement plug across 10 3/4" and stub. (3550-2750').
63. Set 100' (20 lbs) cement plug across 10 3/4" and stub. (3550-2750').
64. Set 100' (20 lbs) cement plug across 10 3/4" and stub. (3550-2750').
65. Set 100' (20 lbs) cement plug across 10 3/4" and stub. (3550-2750').
66. Set 100' (20 lbs) cement plug across 10 3/4" and stub. (3550-2750').
67. Set 100' (20 lbs) cement plug across 10 3/4" and stub. (3550-2750').
68. Set 100' (20 lbs) cement plug across 10 3/4" and stub. (3550-2750').
69. Set 100' (20 lbs) cement plug across 10 3/4" and stub. (3550-2750').
70. Set 100' (20 lbs) cement plug across 10 3/4" and stub. (3550-2750').
71. Set 100' (20 lbs) cement plug across 10 3/4" and stub. (3550-2750').
72. Set 100' (20 lbs) cement plug across 10 3/4" and stub. (3550-2750').
73. Set 100' (20 lbs) cement plug across 10 3/4" and stub. (3550-2750').
74. Set 100' (20 lbs) cement plug across 10 3/4" and stub. (3550-2750').
75. Set 100' (20 lbs) cement plug across 10 3/4" and stub. (3550-2750').
76. Set 100' (20 lbs) cement plug across 10 3/4" and stub. (3550-2750').
77. Set 100' (20 lbs) cement plug across 10 3/4" and stub. (3550-2750').
78. Set 100' (20 lbs) cement plug across 10 3/4" and stub. (3550-2750').
79. Set 100' (20 lbs) cement plug across 10 3/4" and stub. (3550-2750').
80. Set 100' (20 lbs) cement plug across 10 3/4" and stub. (3550-2750').
81. Set 100' (20 lbs) cement plug across 10 3/4" and stub. (3550-2750').
82. Set 100' (20 lbs) cement plug across 10 3/4" and stub. (3550-2750').
83. Set 100' (20 lbs) cement plug across 10 3/4" and stub. (3550-2750').
84. Set 100' (20 lbs) cement plug across 10 3/4" and stub. (3550-2750').
85. Set 100' (20 lbs) cement plug across 10 3/4" and stub. (3550-2750').
86. Set 100' (20 lbs) cement plug across 10 3/4" and stub. (3550-2750').
87. Set 100' (20 lbs) cement plug across 10 3/4" and stub. (3550-2750').
88. Set 100' (20 lbs) cement plug across 10 3/4" and stub. (3550-2750').
89. Set 100' (20 lbs) cement plug across 10 3/4" and stub. (3550-2750').
90. Set 100' (20 lbs) cement plug across 10 3/4" and stub. (3550-2750').
91. Set 100' (20 lbs) cement plug across 10 3/4" and stub. (3550-2750').
92. Set 100' (20 lbs) cement plug across 10 3/4" and stub. (3550-2750').
93. Set 100' (20 lbs) cement plug across 10 3/4" and stub. (3550-2750').
94. Set 100' (20 lbs) cement plug across 10 3/4" and stub. (3550-2750').
95. Set 100' (20 lbs) cement plug across 10 3/4" and stub. (3550-2750').
96. Set 100' (20 lbs) cement plug across 10 3/4" and stub. (3550-2750').
97. Set 100' (20 lbs) cement plug across 10 3/4" and stub. (3550-2750').
98. Set 100' (20 lbs) cement plug across 10 3/4" and stub. (3550-2750').
99. Set 100' (20 lbs) cement plug across 10 3/4" and stub. (3550-2750').
100. Set 100' (20 lbs) cement plug across 10 3/4" and stub. (3550-2750').