

SANTA FE	
FILE	
U.S.G.S.	
LAND OFFICE	
TRANSPORTER	OIL GAS
PRODUCTION OFFICE	
OPERATOR	

NEW MEXICO OIL CONSERVATION COMMISSION
Santa Fe, New Mexico

Form C-101
Revised (12/1/55)

NOTICE OF INTENTION TO DRILL

Notice must be given to the District Office of the Oil Conservation Commission and approval obtained before drilling or recompletion begins. If changes in the proposed plan are considered advisable, a copy of this notice showing such changes will be returned to the sender. Submit this notice in **QUINTUPLICATE**. One copy will be returned following approval. See additional instructions in Rules and Regulations of the Commission. **If State Land submit 6 Copies Attach Form C-128 in triplicate to first 3 copies of form C-101**

Hobbs, New Mexico
(Place)

August 7, 1962
(Date)

OIL CONSERVATION COMMISSION
SANTA FE, NEW MEXICO

Gentlemen:

You are hereby notified that it is our intention to commence the Drilling of a well to be known as

Pan American Petroleum Corporation

(Company or Operator)

State "CL"
(Lease)

Well No. **5**, in

B
(Unit)

The well is

located **330** feet from the

North

line and **1980**

feet from the

East

line of Section **7**, T. **18S**

R. **34E**

NMPM.

(GIVE LOCATION FROM SECTION LINE)

Vacuum Queen (Ext)

Pool, **Lea**

County

If State Land the Oil and Gas Lease is No. **E-5714**

If patented land the owner is

Address

We propose to drill well with drilling equipment as follows: **Q-TD with combination rotary-cable tool rig**

The status of plugging bond is **Blanket bond on file with Commission**

Drilling Contractor **Cactus Drilling Co.**
San Angelo, Texas

We intend to complete this well in the **Queen**

formation at an approximate depth of **4300** feet.

CASING PROGRAM

We propose to use the following strings of Casing and to cement them as indicated:

Size of Hole	Size of Casing	Weight per Foot	New or Second Hand	Depth	Sacks Cement
17-1/4	13-3/8"	35.6	New	300	Circulate
7-7/8	4-1/2"	9.5	New	4300	600' above pay.

If changes in the above plans become advisable we will notify you immediately.

ADDITIONAL INFORMATION (If recompletion give full details of proposed plan of work.)

Contractor may elect to set a cave string of 8-5/8" casing in a 11" hole at a depth of approximately 1700'. Cave string to be recovered.

Approved....., 19.....
Except as follows:

Sincerely yours,

Pan American Petroleum Corporation
(Company or Operator)

By.....
Original Signed by:
V. E. STALEY

Position.....**Area Superintendent**
Send Communications regarding well to

Name.....**V. E. Staley**

Address.....**Box 68 - Hobbs, New Mexico**

OIL CONSERVATION COMMISSION

By.....

NEW MEXICO OIL CONSERVATION COMMISSION
WELL LOCATION AND ACREAGE DEDICATION PLAT

FORM C-129
Revised 5/1/57

SEE INSTRUCTIONS FOR COMPLETING THIS FORM ON THE REVERSE SIDE

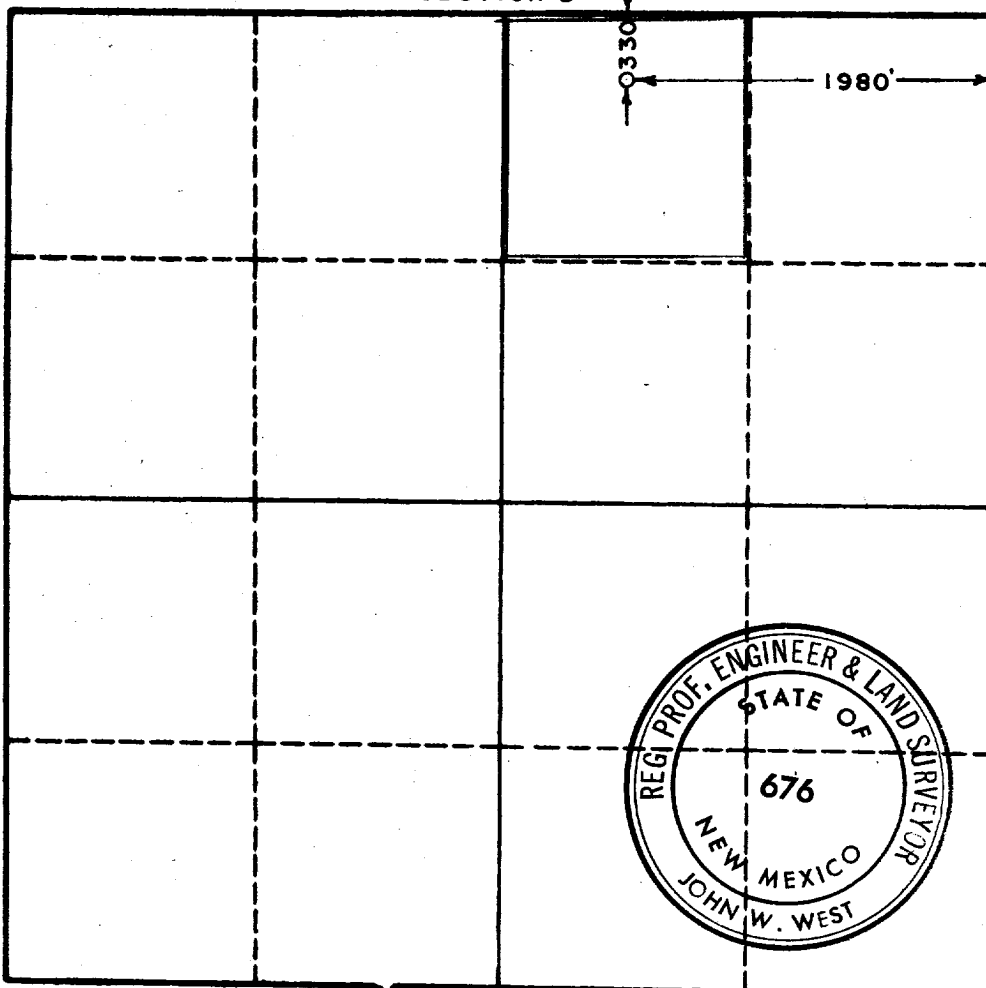
SECTION A

Operator PAN AMERICAN PETROLEUM CORP.		Lease STATE CL		Map No. 3	
Unit Letter B	Section 7	Township 18 SOUTH	Range 34 EAST	County LEA	
Actual Footage Location of Well: 330 feet from the NORTH line and 1980 feet from the EAST line					
Ground Level Elev. NIA	Producing Formation Queen		Pool Vacuum Queen (Ext)	Dedicated Acreage: 40 Acres	

1. Is the Operator the only owner in the dedicated acreage outlined on the plat below? YES ☒ NO ☐ ("Owner" means the person who has the right to drill into and to produce from any pool and to appropriate the production either for himself or for himself and another. (65-3-29 (e) NMSA 1935 Comp.)
2. If the answer to question one is "no," have the interests of all the owners been consolidated by communitization agreement or otherwise? YES ☐ NO ☐ If answer is "yes," Type of Consolidation _____
3. If the answer to question two is "no," list all the owners and their respective interests below:

Owner	Lead Description

SECTION B



CERTIFICATION

I hereby certify that the information in SECTION A above is true and complete to the best of my knowledge and belief.

Name Original Signed by:
V. E. STALEY

Position
Area Superintendent

Company
Pan American Petroleum Corporation

Date
August 7, 1962

I hereby certify that the well location shown on the plat in SECTION B was plotted from field notes of actual surveys made by me or under my supervision, and that the same is true and correct to the best of my knowledge and belief.

Date Surveyed
AUGUST 3, 1962

Registered Professional Engineer and/or Land Surveyor, **JOHN W. WEST**

John W. West

Certificate No.
N. M. - P. E. & L. S. NO. 676

0 330 660 990 1320 1650 1980 2310 2640 2000 1500 1000 500 0