

NEW MEXICO OIL CONSERVATION COMMISSION
Santa Fe, New Mexico

Form C-101
Revised (12/1/55)

NOTICE OF INTENTION TO DRILL

Notice must be given to the District Office of the Oil Conservation Commission and approval obtained before drilling or recompletion begins. If changes in the proposed plan are considered advisable, a copy of this notice showing such changes will be returned to the sender. Submit this notice in QUINTUPLICATE. One copy will be returned following approval. See additional instructions in Rules and Regulations of the Commission. If State Land submit 6 Copies Attach Form C-128 in triplicate to first 3 copies of form C-101

Roswell, New Mexico

(Place)

AUG 14 1961

(Date)

OIL CONSERVATION COMMISSION
SANTA FE, NEW MEXICO

Gentlemen:

You are hereby notified that it is our intention to commence the Drilling of a well to be known as
Shell Oil Company

(Company or Operator)

State VAA

(Lease)

Well No. 4, in L The well is

(Unit)

located 1650 feet from the south line and 660 feet from the

west

line of Section 5, T. 18S, R. 35E, NMPM.

(GIVE LOCATION FROM SECTION LINE)

Vacuum-Abo

Pool, Lea County

R-35-E

D	C	B	A
E	F	G	H
I	K	J	I
M	N	O	P

If State Land the Oil and Gas Lease is No. E-6504

If patented land the owner is

Address

We propose to drill well with drilling equipment as follows: Rotary Tools

T

The status of plugging bond is Blanket

18

S

Drilling Contractor undetermined

We intend to complete this well in the Abo

formation at an approximate depth of 9100 feet.

CASING PROGRAM

We propose to use the following strings of Casing and to cement them as indicated:

Size of Hole	Size of Casing	Weight per Foot	New or Second Hand	Depth	Sacks Cement
17"	13 3/8"	48#	new	300	300
11"	8 5/8"	32#	new	3250	200
7 7/8"	4 1/2"	9.5#	new	9100	700

If changes in the above plans become advisable we will notify you immediately.

ADDITIONAL INFORMATION (If recompletion give full details of proposed plan of work.)

Approved, 19

Except as follows:

Cement must tie back

into casing

OIL CONSERVATION COMMISSION

Sincerely yours,

Shell Oil Company

(Company or Operator)

By R. A. Lowery Original Signed By R. A. LOWERY

Position District Exploitation Engineer

Send Communications regarding well to

Name Shell Oil Company

Address Box 1858, Roswell, New Mexico

NEW MEXICO OIL CONSERVATION COMMISSION
WELL LOCATION AND ACREAGE DEDICATION PLAT

FORM C-128
Revised 5/1/57

SEE INSTRUCTIONS FOR COMPLETING THIS FORM ON THE REVERSE SIDE.

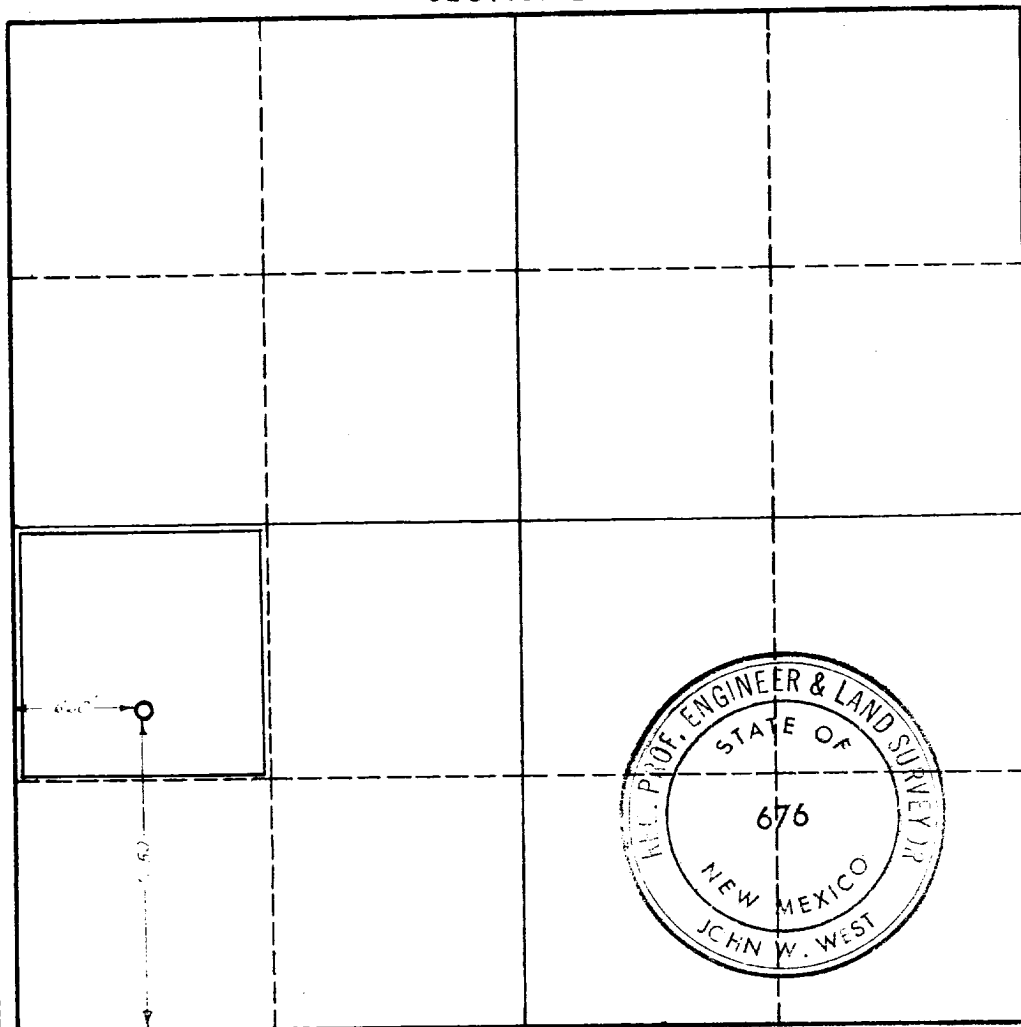
SECTION A

Operator Shell Oil Company		Lease 1961 AUG 17 AM 10:12		Well No. 4
Unit Letter L	Section 5	Township 18S	Range 35E	County Lea
Actual Footage Location of Well: 1690 feet from the south line and 660 feet from the west line				
Ground Level Elev. NA	Producing Formation Abo	Pool Vacuum-Abo	Dedicated Acreage: 40 Acres	

1. Is the Operator the only owner in the dedicated acreage outlined on the plat below? YES ☒ NO ____ . ("Owner" means the person who has the right to drill into and to produce from any pool and to appropriate the production either for himself or for himself and another. (65-3-29 (e) NMSA 1935 Comp.)
2. If the answer to question one is "no," have the interests of all the owners been consolidated by communitization agreement or otherwise? YES ____ NO ____ . If answer is "yes," Type of Consolidation ____
3. If the answer to question two is "no," list all the owners and their respective interests below:

Owner	Land Description

SECTION B



CERTIFICATION

I hereby certify that the information in SECTION A above is true and complete to the best of my knowledge and belief.

Name Original Signed By
R. A. Lowery R. A. LOWERY
Position
District Exploitation Engineer
Company
Shell Oil Company
Date
AUG 14 1961

I hereby certify that the well location shown on the plat in SECTION B was plotted from field notes of actual surveys made by me or under my supervision, and that the same is true and correct to the best of my knowledge and belief.

Date Surveyed
8-2-1961
Registered Professional Engineer and/or Land Surveyor
John W. West

Certificate No.
676

0 330 660 990 1320 1650 1980 2310 2640 2000 1500 1000 500

INSTRUCTIONS FOR COMPLETION OF FORM C-128

1. Operator shall furnish and certify to the information called for in Section A.
2. Operator shall outline the dedicated acreage for *both* oil and gas wells on the plat in Section B.
3. A registered professional engineer or land surveyor registered in the State of New Mexico or approved by the Commission shall show on the plat the location of the well and certify this information in the space provided. 2
4. All distances shown on the plat must be from the outer boundaries of the Section.
5. If additional space is needed for listing owners and their respective interests as required in question 3 of Section A, please use space below.

Robert J. Mowbray