

Submit 3 Copies To Appropriate District
Office
District I
1625 N. French Dr., Hobbs, NM 87240
District II
811 South First, Artesia, NM 87210
District III
1000 Rio Brazos Rd., Aztec, NM 87410
District IV
2040 South Pacheco, Santa Fe, NM 87505

State of New Mexico
Energy, Minerals and Natural Resources

OIL CONSERVATION DIVISION
2040 South Pacheco
Santa Fe, NM 87505

Form C-103
Revised March 25, 1999

SUNDRY NOTICES AND REPORTS ON WELLS (DO NOT USE THIS FORM FOR PROPOSALS TO DRILL OR TO DEEPEN OR PLUG BACK TO A DIFFERENT RESERVOIR. USE "APPLICATION FOR PERMIT" (FORM C-101) FOR SUCH PROPOSALS.)		WELL API NO. 30-025-03069
1. Type of Well: Oil Well <input checked="" type="checkbox"/> Gas Well <input type="checkbox"/> Other <input type="checkbox"/>		5. Indicate Type of Lease STATE <input checked="" type="checkbox"/> FEE <input type="checkbox"/>
2. Name of Operator Phillips Petroleum Company		6. State Oil & Gas Lease No. B-1713
3. Address of Operator 4001 Penbrook Street Odessa, TX 79762		7. Lease Name or Unit Agreement Name: Vacuum ABO Unit Tract 13
4. Well Location Unit Letter XG : 2080 feet from the North line and 1980 feet from the East line Section 5 Township 18-S Range 35-E NMPM County Lea		8. Well No. 07
10. Elevation (Show whether DR, RKB, RT, GR, etc.) 3952' GR, 3967' RKB		9. Pool name or Wildcat

11. Check Appropriate Box to Indicate Nature of Notice, Report, or Other Data

NOTICE OF INTENTION TO:

PERFORM REMEDIAL WORK ☐ PLUG AND ABANDON ☒
TEMPORARILY ABANDON ☐ CHANGE PLANS ☐
PULL OR ALTER CASING ☐ MULTIPLE COMPLETION ☐
OTHER: ☐

SUBSEQUENT REPORT OF:

REMEDIAL WORK ☐ ALTERING CASING ☐
COMMENCE DRILLING OPNS. ☐ PLUG AND ABANDONMENT ☐
CASING TEST AND CEMENT JOB ☐
OTHER: ☐

12. Describe Proposed or Completed Operations (Clearly state all pertinent details, and give pertinent dates, including estimated date of starting any proposed work). SEE RULE 1103. For Multiple Completions: Attach wellbore diagram of proposed completion or recompletion.

Plug and Abandon Procedure, before and after wellbore schematics attached.

THE COMMISSION MUST BE NOTIFIED 24 HOURS PRIOR TO THE BEGINNING OF PLUGGING OPERATIONS FOR THE C-103 TO BE APPROVED.

I hereby certify that the information above is true and complete to the best of my knowledge and belief.

SIGNATURE Stacey Linderfor L.M. Sanders TITLE Supervisor, Reg./Pro. DATE 02/05/02

Type or print name L. M. Sanders Telephone No. (915) 368-1488

(This space for State use)

ORIGINAL SIGNED BY
GARY W. WINK
OC FIELD REPRESENTATIVE II/STAFF MANAGER

APPROVED BY DATE FEB 05 2002

Conditions of approval, if any:

J
C

8 mP

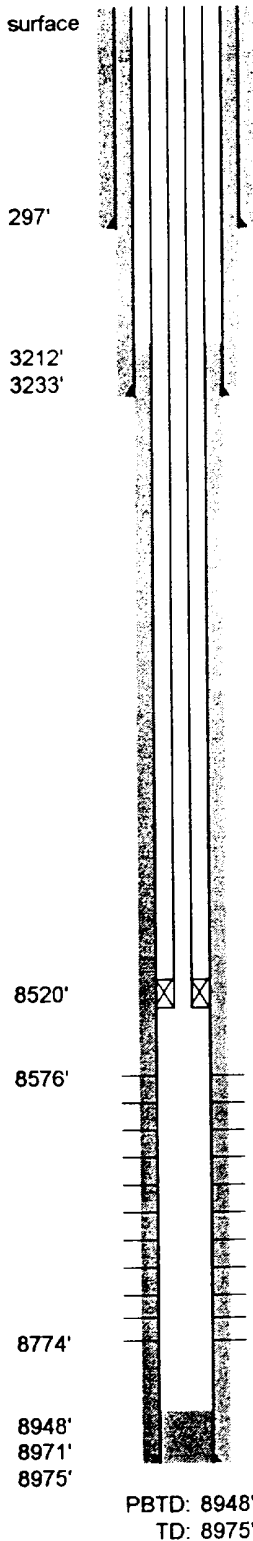
PLUG AND ABANDON WELL PROCEDURE VACUUM ABO UNIT #13-07

NOTE: Cement used is Class "C", density of 14.8 ppg, yield of 1.32 cubic feet per sack.

1. Notify NMOC at (505) 393-6161, 24 hours prior to initiating plugging operations.
2. MIRU Plug & Abandon Package.
3. ND wellhead. Freepoint 5-1/2" casing (TOC by temperature survey @ 3212'). NU PPCo. Class 1 shop tested BOP stack.
4. Pull 2-3/8" IPC tubing and Lock-set packer.
5. MIRU wireline. Make gauge ring run in 5-1/2" production casing to 8510'. If wellbore is clear, set CIBP @ 8500'. POOH & RD wireline.
6. GIH w/ 2-3/8" WS open-ended and tag CIBP @ 8500'. Circulate 5-1/2" casing with 9.5 ppg mud-laden fluid.
7. Spot Plug No. 1, 35 sx., minimum 25 sx., calculated interval: 8500'-8146'. The plug will cover the Abo Reef and Abo Shale.
8. POOH & LD to 6275'. Spot Plug No. 2, minimum 25 sx., calculated interval: 6275'-6028'. The plug will cover the Clearfork and Glorieta.
9. POOH & LD to 4550'. Spot Plug No. 3, 80 sx., minimum 25 sx., calculated interval: 4550'-3759'. The plug will cover the San Andres, Grayburg, & Queen.
10. POOH w/ WS. MIRU wireline. GIH & string shot or cut 5-1/2" casing just above TOC (casing freepoint). POOH wireline. Pull 5-1/2" casing.
11. GIH w/ WS to 3300' (or 50' inside casing stub, whichever is deeper). Spot Plug No. 4, at least 130 sx., minimum interval: 3283' or 50' inside stub- 2779', calculated interval: 3300'-2769'. WOC and tag. The plug covers the intermediate casing shoe, prod. casing stub, & Yates.
12. POOH & LD to 375'. Spot Plug No. 5, 100 sx., minimum interval: 347'-surface, calculated interval: 375'-surface. The plug will cover the surface casing shoe and surface plug.
13. TOOH & LD workstring. WOC. Visually tag cement and top off if necessary.
14. Cut off casing and wellhead 3' below GL and cap well. Install dry hole marker. Perform reclamation work.
15. Send forms and reports to: Phillips Regulatory
4001 Penbrook
Odessa, Texas 79762

→ 100' PLUG F/1650'-1550' T.O.S.

**Phillips Petroleum Company-Southwest Region
Vacuum Abo Unit #13-07**



RKB 3967'
DF 3966'
GL 3952'

Surface Hole: 16"
Surface Casing: 13 3/8", 48#, H-40
Set @ 297'.
350 sx cmt. Circ. 40 sx.

Intermediate Hole: 11"
Intermediate Casing: 8 5/8", J-55 Casing, set @ 3233'.
2500' of 24#, 733' of 32#. 1200 sx cmt. Circ. 40 sx.

TOC @ 3212' by temperature survey.

Lease & Well No.: **Vacuum Abo Unit #13-07**

Well Category: One Status: Shut in WIW
Area: New Mexico
Subarea: Buckeye Field: Vacuum Abo Reef
API Number: 30-025-03069
Legal Description: 2080' FNL, 1980' FEL, Sec 5, T-18-S, R-35-E
County, State: Lea County, New Mexico
Spudded: 03/14/1961
Completed: 04/24/1961

Well History:

- 12/83 Converted to WIW. Set Lock-set pkr at 8520' on 7325' of 2 3/8" J-55 IPC tbg, 1179' of 2 3/8" N-80 IPC tbg, and 16' of 2 3/8" L-80 IPC tbg. Initiated injection: 288 bwpd at 0 psig on 12/31/83.
- 4/84 Acidized 8576-8774' overall w/ 16,000 gal x-linked 20% HCl in 2 stages. Set pkr at 8520'. Inj before: 146 bwpd at 110 psig. Inj after: 395 bwpd at 110 psig.
- 5/01 Failed bradenhead test. 200 psig pressure on intermediate csg. After pressure from csg. was relieved, drilling mud w/ oil continued to leak from intermediate casing.

Packer at 8520'

Abo Perforations

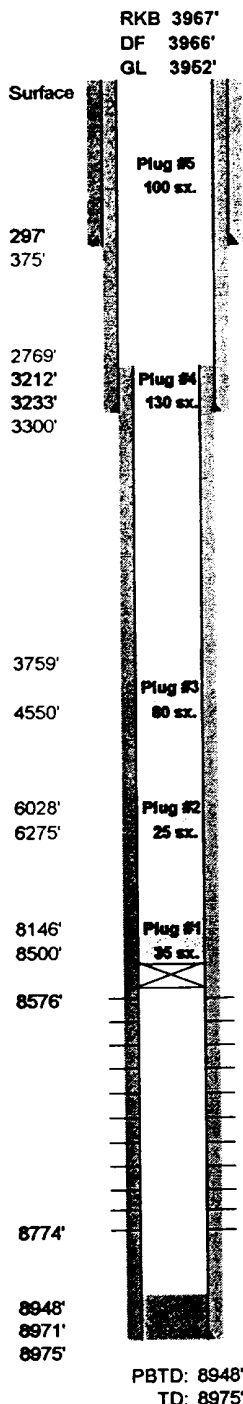
8576' - 8594' w/ 1 SPF (18 holes)
8608' - 8611' w/ 1 SPF (4 holes)
8613' - 8616' w/ 1 SPF (4 holes)
8626' w/ 1 SPF (1 hole)
8629' w/ 1 SPF (1 hole)
8638' - 8646' w/ 2 SPF (16 holes)
8659' - 8664' w/ 2 SPF (10 holes)
8672' - 8684' w/ 2 SPF (24 holes)
8692' - 8712' w/ 2 SPF (40 holes)
8744' - 8747' w/ 2 SPF (6 holes)
8761' - 8774' w/ 2 SPF (26 holes)

Production Hole: 7- 7/8"
Production Casing: 5 1/2", J-55, ST&C set @ 8971'.
7100' of 15.5#, 1871' of 17#. 529 sx cmt. TOC @ 3212' by temp survey.

Formation Tops:

Yates	2929'
Queen	3864'
Grayburg	4158'
San Andres	4538'
Glorieta	6144'
Clearfork	6205'
Abo Shale	8270'
Abo Reef	8528'

**Phillips Petroleum Company-Southwest Region
Vacuum Abo Unit #13-07**



Spot Plug #5, 100 sx., min. interval: 347'-surf., calc'd interval: 375'-surface. Covers the casing shoe surface plug.
Surface Hole: 16"

Surface Casing: 13 3/8" 48# H-40 Cmt'd w/ 350 sx. Circ 40 sx.

TOC @ 3212' by temperature survey.
Spot Plug #4, min. 130 sx, min. interval: 3283' or 50' inside casing stub - 2779'. Calc'd interval: 3300'-2769'. Covers the intermediate casing shoe, prod. csg. stub, & Yates.

Intermediate Hole: 11"

Intermediate Casing: 8 5/8", J-55 Casing, set @ 3233'.
2500' of 24#, 733' of 32#.
1200 sx cmt. Circ. 40 sx.

Spot Plug #3, 80 sx., 25 sx. min, calc'd interval: 4550'-3759'. Covers the San Andres, Grayburg & Queen.

Spot Plug #2, 25 sx. min, calc'd interval: 6275'-6028'. Covers the Clearfork & Glorieta.

Spot Plug #1, 35 sx., 25 sx. min, calc'd interval: 8500'-8146'. Covers the Abo Reef and Shale.

Abo Perforations

8576' - 8594' w/ 1 SPF (18 holes)
8608' - 8611' w/ 1 SPF (4 holes)
8613' - 8616' w/ 1 SPF (4 holes)
8626' w/ 1 SPF (1 hole)
8629' w/ 1 SPF (1 hole)
8638' - 8646' w/ 2 SPF (16 holes)
8659' - 8664' w/ 2 SPF (10 holes)
8672' - 8684' w/ 2 SPF (24 holes)
8692' - 8712' w/ 2 SPF (40 holes)
8744' - 8747' w/ 2 SPF (6 holes)
8761' - 8774' w/ 2 SPF (26 holes)

Production Hole: 7-7/8"
Production Casing: 5 1/2", J-55, ST&C set @ 8971'.
7100' of 15.5#, 1871' of 17#.
529 sx cmt. TOC @ 3212' by temp survey.

PBTD: 8948'
TD: 8975'

Lease & Well No.: **Vacuum Abo Unit #13-07**

Date: **January 23, 2002**

Well Category: **One** Status: **Shut in WIW**

Area: **New Mexico**

Subarea: **Buckeye** Field: **Vacuum Abo Reef**

API Number: **30-025-03069**

Legal Description: **2080' FNL, 1980' FEL, Sec 5, T-18-S, R-35-E**

County, State: **Lea County, New Mexico**

Spudded: **03/14/1961**

Completed: **04/24/1961**

Well History:

12/8 Converted to WIW. Set Lock-set pkr at 8520' on 7325' of 2 3/8" J-55 IPC tbg, 1179' of 2 3/8" N-80 IPC tbg, and 16' of 2 3/8" L-80 IPC tbg. Initiated injection: 288 bwpd at 0 psig on 12/31/83.

4/84 Acdzd 8576-8774' overall w/ 16,000 gal x-linked 20% HCl in 2 stages. Set pkr at 8520'. Inj before: 146 bwpd at 110 psig. Inj after: 395 bwpd at 110 psig.

5/01 Failed bradenhead test. 200 psig pressure on intermediate csg. After pressure from csg. was relieved, drilling mud w/ oil continued to leak from intermediate casing.

Formation Tops:

Yates	2929'
Queen	3864'
Grayburg	4158'
San Andres	4538'
Glorieta	6144'
Clearfork	6205'
Abo Shale	8270'
Abo Reef	8528'