

DISTRICT I

P.O. Box 1980, Hobbs, NM 88240

DISTRICT II

P.O. Box Drawer DD, Artesia, NM 88210

DISTRICT III

1000 Rio Brazos Rd., Aztec, NM 87410

OIL CONSERVATION DIVISION

P.O. Box 2088  
Santa Fe, New Mexico 87504-2088

AMENDED

WELL API NO. 30-025-03084	
5. Indicate Type of Lease STATE <input checked="" type="checkbox"/> FEE <input type="checkbox"/>	
6. State Oil / Gas Lea 857943	
7. Lease Name or Unit Agreement Name CENTRAL VACUUM UNIT	
8. Well No. 110	
9. Pool Name or Wildcat VACUUM GRAYBURG SAN ANDRES	
10. Date Spudded 2/25/98	
11. Date T.D. Reached 3/12/98	
12. Date Compl. (Ready to Prod.) 4/2/98	
13. Elevations (DF & RKB, RT, GR, etc.) 3975' G.L.	
14. Elev. Csghead	
15. Total Depth 6434'	
16. Plug Back T.D. 4681' TVD	
17. If Mult. Compl. How Many Zones?	
18. Intervals Drilled By ROTARY	
19. Producing Interval(s), of this completion - Top, Bottom, Name 4312' TVD - 4681' TVD GRAYBURG, SAN ANDRES	
20. Was Directional Survey Made YES	
21. Type Electric and Other Logs Run NEUTRON POROSITY & LATERLOGS IN O.H., TDT	
22. Was Well Cored No	
23. CASING RECORD (Report all Strings set in well)	
24. LINER RECORD	
25. TUBING RECORD	
26. Perforation record (interval, size, and number) 3962'TVD - 4681' TVD (O.H.)	
27. ACID, SHOT, FRACTURE, CEMENT, SQUEEZE, ETC.	
28. PRODUCTION	
29. Disposition of Gas (Sold, used for fuel, vented, etc.) SOLD	
30. List Attachment	
31. I hereby certify that the information on both sides of this form is true and complete to the best of my knowledge and belief.	

SUB  
BHL 10 BAL 2  
Section 6

Unit Letter J 1980 Feet From The SOUTH Line and 2310 Feet From The EAST Line  
Township 18S Range 35E NMPM 364 2905 7E LEA COUNTY

CASING SIZE	WEIGHT LB./FT.	DEPTH SET	HOLE SIZE	CEMENT RECORD	AMOUNT PULLED
NO CHANGE			NO CHANGE	VERTICAL HLE P.B. TO	4020'

SIZE	TOP	BOTTOM	SACKS CEMENT	SCREEN	SIZE	DEPTH SET	PACKER SET
					2 7/8"	3600'	3875'

DEPTH INTERVAL	AMOUNT AND KIND MATERIAL USED
3962'-4681'	172,000 GALS 15% NEFE HCL
	193,500 GALS WF130

PRODUCTION							
Date First Production 5/5/98		Production Method (Flowing, gas lift, pumping - size and type pump) PUMPING 4"X19'					Well Status (Prod. or Shut-in) P
Date of Test 5-28-98	Hours tested 12 HRS	Choke Size	Prod'n For Test Period	Oil - Bbl. 273	Gas - MCF 77	Water - Bbl. 279	Gas - Oil Ratio 245
Flow Tubing Press.	Casing Pressure	Calculated 24- Hour Rate	Oil - Bbl.	Gas - MCF	Water - Bbl.	Oil Gravity - API -(Corr.)	

29. Disposition of Gas (Sold, used for fuel, vented, etc.) SOLD	Test Witnessed By
--	-------------------

30. List Attachment
31. I hereby certify that the information on both sides of this form is true and complete to the best of my knowledge and belief.
SIGNATURE <i>J. Denise Leake</i> TITLE Engineering Assistant DATE 7/22/98
TYPE OR PRINT NAME J. Denise Leake Telephone No. 397-0405

## DISTRICT I

P.O. Box 1980, Hobbs, NM 88241-1980

## DISTRICT II

P.O. Box Drawer DD, Artesia, NM 88211-0719

## DISTRICT III

1000 Rio Brazos Rd., Aztec, NM 87410

## DISTRICT IV

P.O. Box 2088, Santa Fe, NM 87504-2088

State of New Mexico

Energy, Minerals and Natural Resources Department

Form C-102

Revised February 10, 1994

Instructions on back

Submit to Appropriate District Office

State Lease - 4 Copies

Fee Lease - 3 Copies

☐ AMENDED REPORT

## OIL CONSERVATION DIVISION

P.O. Box 2088

Santa Fe, New Mexico 87504-2088

## WELL LOCATION AND ACREAGE DEDICATION PLAT

<sup>1</sup> API Number 30-025-03084		<sup>2</sup> Pool Code 62180		<sup>3</sup> Pool Name VACUUM GRAYBURG SAN ANDRES	
<sup>4</sup> Property Code 11122		<sup>5</sup> Property Name CENTRAL VACUUM UNIT			<sup>6</sup> Well No. 110
<sup>7</sup> OGRID Number 022351		<sup>8</sup> Operator Name TEXACO EXPLORATION & PRODUCTION INC.			<sup>9</sup> Elevation 3975'

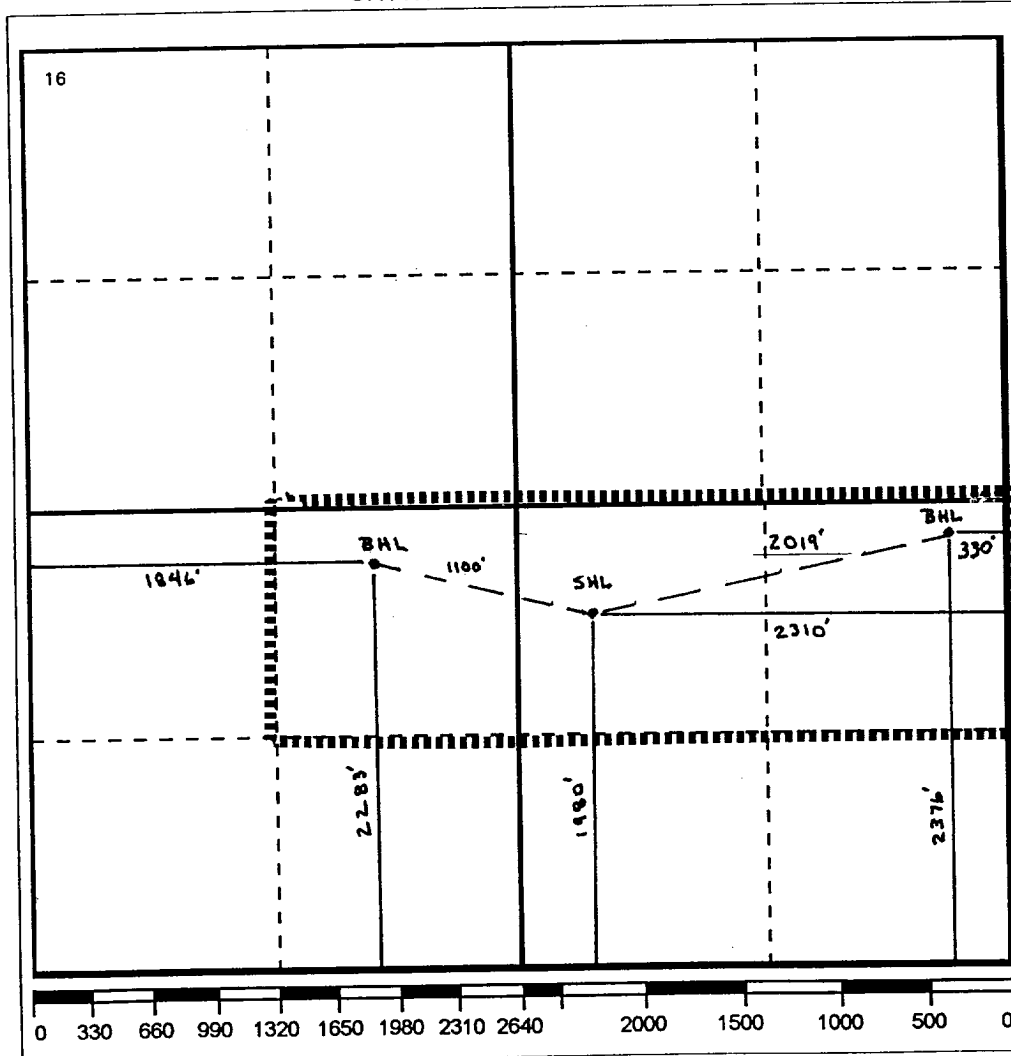
<sup>10</sup> Surface Location

UI or lot no.	Section	Township	Range	Lot.Idn	Feet From The	North/South Line	Feet From The	East/West Line	County
J	6	18S	35E		1980	SOUTH	2310	EAST	LEA

<sup>11</sup> Bottom Hole Location If Different From Surface

UI or lot no.	Section	Township	Range	Lot.Idn	Feet From The	North/South Line	Feet From The	East/West Line	County
T/K	6	18S	35E		2376' 2283'	S/S	330' 1846'	E/W E	LEA
<sup>12</sup> Dedicated Acres 120					<sup>13</sup> Joint or Infill No		<sup>14</sup> Consolidation Code		<sup>15</sup> Order No. 2662/2162

NO ALLOWABLE WILL BE ASSIGNED TO THIS COMPLETION UNTIL ALL INTERESTS HAVE BEEN CONSOLIDATED  
OR A NON-STANDARD UNIT HAS BEEN APPROVED BY THE DIVISION



## 17 OPERATOR CERTIFICATION

I hereby certify that the information contained herein is true and complete to the best of my knowledge and belief

Signature

Printed Name

J. Denise Leake

Position

Engineering Assistant

Date

12-18-97

## 18 SURVEYOR CERTIFICATION

I hereby certify that the well location shown on this plat was plotted from field notes of actual surveys made by me or under my supervision, and that the same is true and correct to the best of my knowledge and belief.

Date Surveyed

Signature & Seal of  
Professional Surveyor

Certificate No.