

NEW MEXICO OIL CONSERVATION COMMISSION  
SOUTHEAST NEW MEXICO PACKER LEAKAGE TEST

Operator <b>Skelly Oil Company</b>				Lease <b>Hobbs WNW</b>		Well No. <b>1</b>	
Location of Well		Unit <b>D</b>	Sec <b>8</b>	Twp <b>18</b>	Rge <b>35</b>	County <b>Lea</b>	
Name of Reservoir or Pool				Type of Prod (Oil or Gas)	Method of Prod Flow, Art Lift	Prod. Medium (Tbg or Csg)	Choke Size
Upper Compl	<b>Vacuum Drinkard</b>			<b>T. A.</b>	<b>None</b>	<b>Casing</b>	<b>0</b>
Lower Compl	<b>Vacuum Abo</b>			<b>Oil</b>	<b>Flow</b>	<b>Tubing</b>	<b>1 1/2"</b>

FLOW TEST NO. 1

Both zones shut-in at (hour, date): 8:00 A.M. March 25, 1963

	Upper Completion	Lower Completion
Well opened at (hour, date): <u>1:45 P.M. March 25, 1963</u>		
Indicate by ( X ) the zone producing.....		<u>X</u>
Pressure at beginning of test.....	<u>25</u>	<u>665</u>
Stabilized? (Yes or No).....	<u>Yes</u>	<u>Yes</u>
Maximum pressure during test.....	<u>25</u>	<u>400</u>
Minimum pressure during test.....	<u>25</u>	<u>330</u>
Pressure at conclusion of test.....	<u>25</u>	<u>390</u>
Pressure change during test (Maximum minus Minimum).....	<u>0</u>	<u>70</u>
Was pressure change an increase or a decrease?.....	<u>Neither</u>	<u>Decrease</u>
Well closed at (hour, date): <u>6:45 P.M. March 25, 1963</u>	Total Time On Production <u>5 hours</u>	
Oil Production	Gas Production	
During Test: <u>41</u> bbls; Grav. <u>41.1 deg</u> ; During Test <u>40</u> MCF; GOR <u>976</u>		
Remarks <u>No flow test necessary on T. A. Vacuum Drinkard approved by Joe Ramey March 8, 1963.</u>		

FLOW TEST NO. 2

	Upper Completion	Lower Completion
Well opened at (hour, date):		
Indicate by ( X ) the zone producing.....		
Pressure at beginning of test.....		
Stabilized? (Yes or No).....		
Maximum pressure during test.....		
Minimum pressure during test.....		
Pressure at conclusion of test.....		
Pressure change during test (Maximum minus Minimum).....		
Was pressure change an increase or a decrease?.....		
Well closed at (hour, date)	Total time on Production	
Oil Production	Gas Production	
During Test: bbls; Grav. ; During Test MCF; GOR		
Remarks		

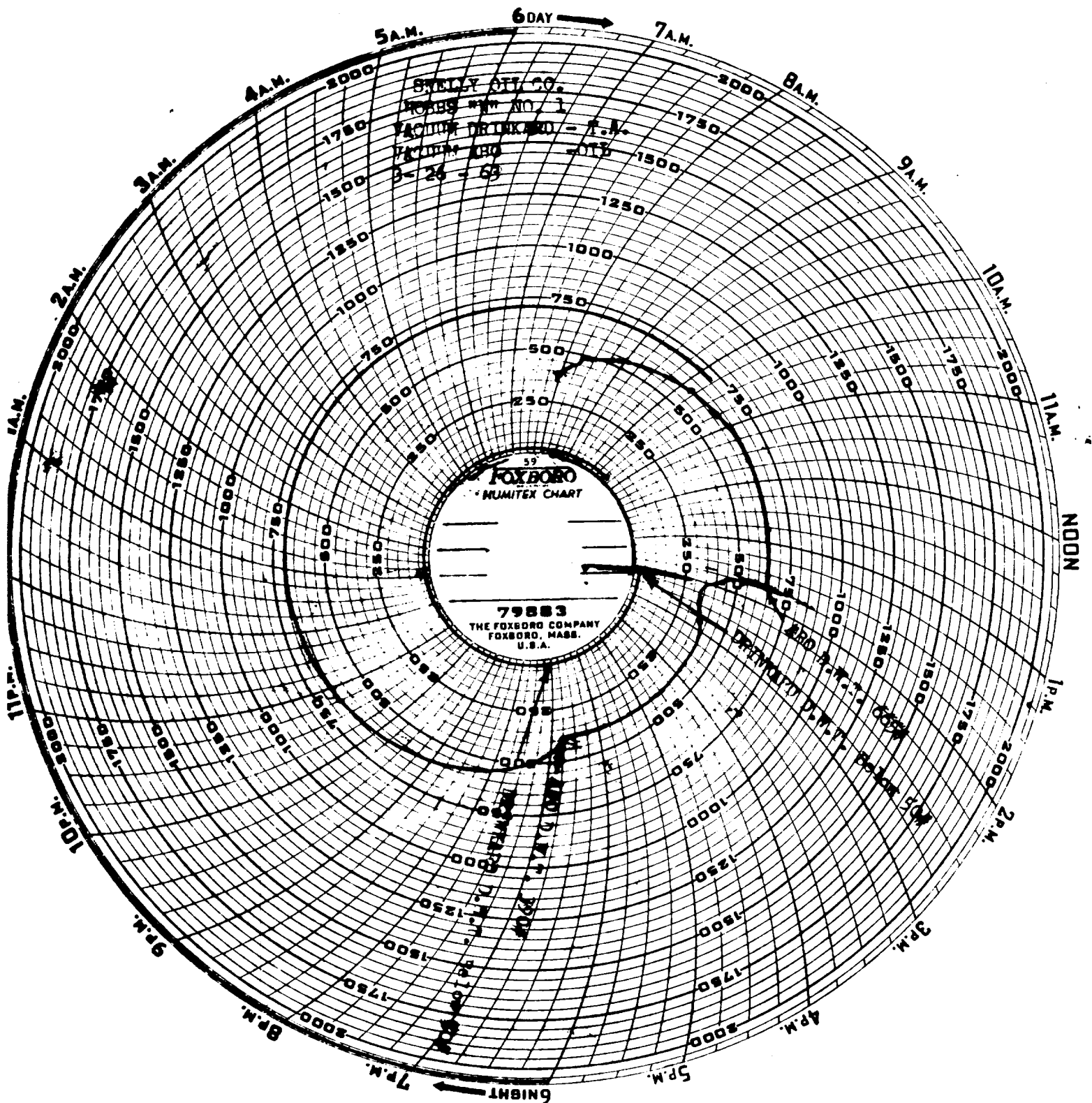
I hereby certify that the information herein contained is true and complete to the best of my knowledge.

Approved \_\_\_\_\_ 19 \_\_\_\_\_  
New Mexico Oil Conservation Commission

By \_\_\_\_\_  
Title \_\_\_\_\_

Operator Skelly Oil Company  
By Charles J. Love  
**Charles J. Love**  
Title District Engineer  
Date March 26, 1963





## NEW MEXICO OIL CONSERVATION COMMISSION

## GAS-OIL RATIO REPORT

OPERATOR Skelly Oil Company POOL Vacuum Abo  
ADDRESS P.O. box 38, Hobbs, New Mexico MONTH OF February and March, 19 63  
SCHEDULED TEST X COMPLETION TEST \_\_\_\_\_ SPECIAL TEST \_\_\_\_\_ (Check One)  
(See Instructions on Reverse Side)

Lease	Well No.	Date of Test	Producing Method	Choke Size	Test Hours	Daily Allowable Bbls.	Production During Test			GOR Cu. Ft. Per Bbl.
							Water Bbls.	Oil Bbls.	Gas MCF	
Hobbs WPM	1	3/14	F	14/64"	17	108	0	131	130	992

No well will be assigned an allowable greater than the amount of oil produced on the official test.

During gas-oil ratio test, each well shall be produced at a rate not exceeding the top unit allowable for the pool in which well is located by more than 25 percent. Operator is encouraged to take advantage of this 25 percent tolerance in order that well can be assigned increased allowables when authorized by the Commission.

Gas volumes must be reported in MCF measured at a pressure base of 15.025 psia and a temperature of 60 degrees F. Specific gravity base will be 0.60.

Mail original and one copy of this report to the district office of the New Mexico Oil Conservation Commission. In accordance with Rule 301 and Appropriate Pool Rules.

(I certify that the information given is true and complete to the best of my knowledge.)

Date March 26, 1963

Skelly Oil Company  
Company

By Charles J. Love  
Charles J. Love  
District Engineer  
Title