

NEW MEXICO OIL CONSERVATION COMMISSION  
SOUTHEAST NEW MEXICO PACKER LEAKAGE TEST

Operator <b>Skelly Oil Company</b>			Lease <b>Hobbs #111</b>			Well No. <b>1</b>	
Location of Well	Unit <b>D</b>	Sec <b>8</b>	Twp <b>18</b>		Range <b>35</b>	County <b>Lea</b>	
Name of Reservoir or Pool			Type of Prod (Oil or Gas)	Method of Prod Flow, Art Lift	Prod. Medium (Tbg or Csg)	Choke Size	
Upper Compl	<b>Undesignated Drinkard</b>		<b>Oil</b>	<b>Art. Lift</b>	<b>Tbg.</b>	<b>Open</b>	
Lower Compl	<b>Vacuum Abo</b>		<b>Oil</b>	<b>Flow</b>	<b>Tbg.</b>	<b>14/64</b>	

FLOW TEST NO. 1

Both zones shut-in at (hour, date): **8:00 A.M. January 7, 1962**

Well opened at (hour, date): <b>1:10 P.M. January 8, 1962</b>	Upper Completion	Lower Completion
Indicate by ( X ) the zone producing.....		<b>X</b>
Pressure at beginning of test.....	<b>118</b>	<b>858</b>
Stabilized? (Yes or No).....	<b>Yes</b>	<b>Yes</b>
Maximum pressure during test.....	<b>118</b>	<b>858</b>
Minimum pressure during test.....	<b>118</b>	<b>375</b>
Pressure at conclusion of test.....	<b>118</b>	<b>493</b>
Pressure change during test (Maximum minus Minimum).....	<b>0</b>	<b>483</b>
Was pressure change an increase or a decrease?.....	<b>None</b>	<b>Decrease</b>
Total Time On Well closed at (hour, date): <b>5:00 P.M. January 8, 1962</b> Production <b>3 hrs. 50 mins.</b>		
Oil Production Gas Production		
During Test: <b>27.0</b> bbls; Grav. <b>40.3</b> ; During Test <b>39.2</b> MCF; GOR <b>1451:1</b>		
Remarks		

FLOW TEST NO. 2

Well opened at (hour, date): <b>9:20 A.M. January 9, 1962</b>	Upper Completion	Lower Completion
Indicate by ( X ) the zone producing.....	<b>X</b>	
Pressure at beginning of test.....	<b>118</b>	<b>858</b>
Stabilized? (Yes or No).....	<b>Yes</b>	<b>Yes</b>
Maximum pressure during test.....	<b>118</b>	<b>858</b>
Minimum pressure during test.....	<b>0</b>	<b>858</b>
Pressure at conclusion of test.....	<b>35</b>	<b>858</b>
Pressure change during test (Maximum minus Minimum).....	<b>118</b>	<b>0</b>
Was pressure change an increase or a decrease?.....	<b>Decrease</b>	<b>None</b>
Total time on Well closed at (hour, date): <b>9:20 A.M. January 10, 1962</b> Production <b>2 1/2 Hrs.</b>		
Oil Production Gas Production		
During Test: <b>28.9</b> bbls; Grav. <b>38.0</b> ; During Test <b>34.0</b> MCF; GOR <b>1176:1</b>		
Remarks		

I hereby certify that the information herein contained is true and complete to the best of my knowledge.

Approved \_\_\_\_\_ 19\_\_\_\_\_  
New Mexico Oil Conservation Commission

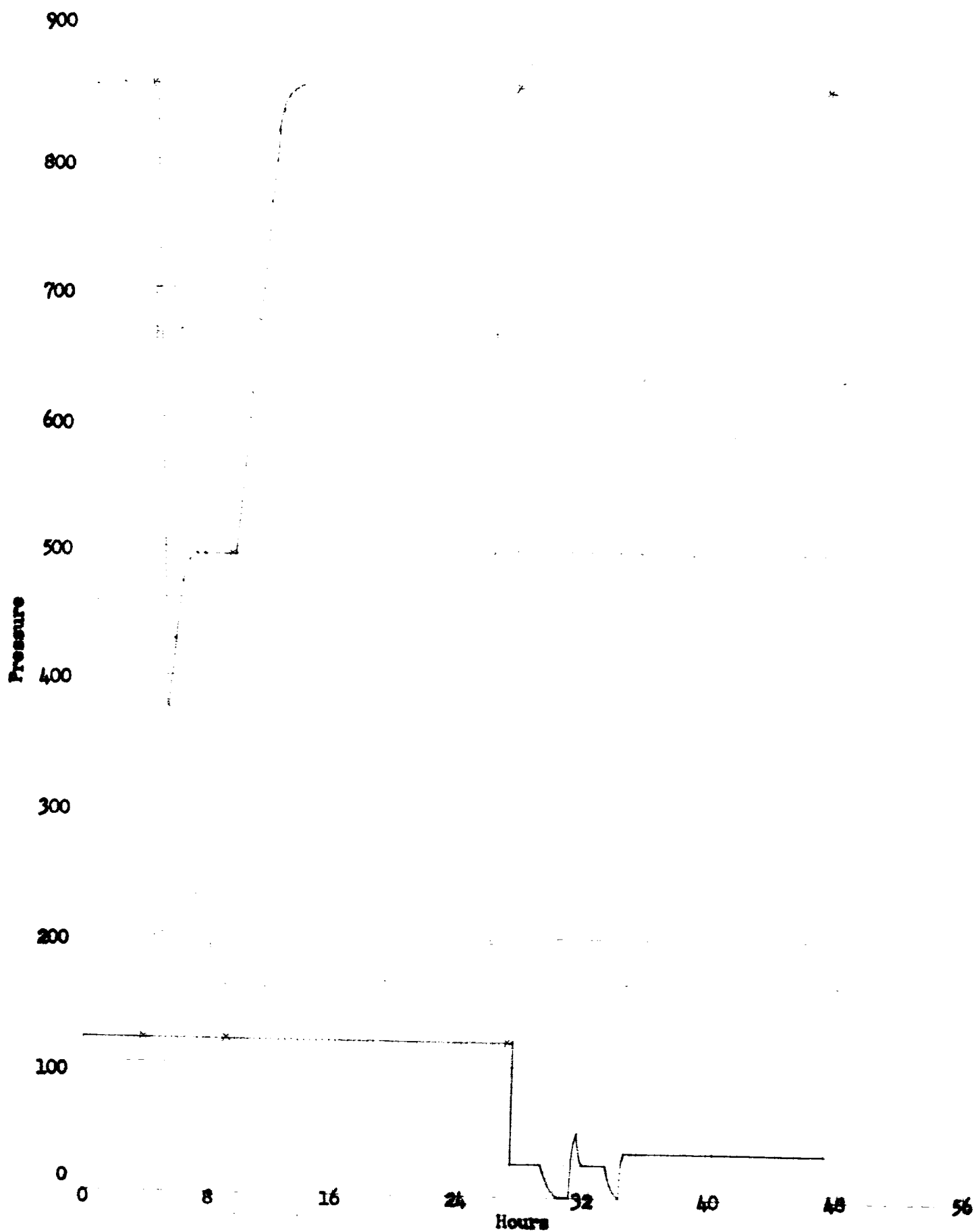
By \_\_\_\_\_  
Title \_\_\_\_\_

Operator **Skelly Oil Co.**

By **(ORIGINAL SIGNED) H. E. Aab**

Title **Dist. Supt.**

Date **January 11, 1962**



X - Denotes Dead Weight Tests