

Submit to Appropriate
District Office
State Lease - 6 copies
Fee Lease - 5 copies

State of New Mexico
Energy, Minerals and Natural Resources Department

Form C-101
Revised 1-1-89

OIL CONSERVATION DIVISION

DISTRICT I
P.O. Box 1980, Hobbs, NM 88240

P.O. Box 2088
Santa Fe, New Mexico 87504-2088

DISTRICT II
P.O. Drawer DD, Artesia, NM 88210

DISTRICT III
1000 Rio Brazos Rd., Aztec, NM 87410

| |
|---|
| API NO. (assigned by OCD on New Wells) |
| 30-025-03125 |
| 5. Indicate Type of Lease STATE <input checked="" type="checkbox"/> FEE <input type="checkbox"/> |
| 6. State Oil & Gas Lease No. L-4253-3 |

| | | | | | |
|---|----------------|--|--|--|----------|
| APPLICATION FOR PERMIT TO DRILL, DEEPEN, OR PLUG BACK | | | | | |
| 1a. Type of Work: DRILL <input type="checkbox"/> RE-ENTER <input checked="" type="checkbox"/> DEEPEN <input type="checkbox"/> PLUG BACK <input type="checkbox"/> | | | 7. Lease Name or Unit Agreement Name Reeves - State | | |
| b. Type of Well: OIL WELL <input checked="" type="checkbox"/> GAS WELL <input type="checkbox"/> OTHER <input type="checkbox"/> | | | 8. Well No. 1 | | |
| 2. Name of Operator Capataz Operating, Inc. | | | 9. Pool name or Wildcat Reeves (Queen) | | |
| 3. Address of Operator P. O. Box 2083, Midland, TX 79702 | | | | | |
| 4. Well Location Unit Letter 0 : 330 Feet From The South Line and 2194.5 Feet From The East Line Section 22 Township 18S Range 35E NMPM Lea County | | | | | |
| 10. Proposed Depth 4650 | | 11. Formation Queen | | 12. Rotary or C.T. Rotary | |
| 13. Elevations (Show whether DF, RT, GR, etc.) | | 14. Kind & Status Plug. Bond Single Well Cash | | 15. Drilling Contractor Eunice Well Service | |
| | | | | 16. Approx. Date Work will start 12/15/92 | |
| 17. PROPOSED CASING AND CEMENT PROGRAM | | | | | |
| SIZE OF HOLE | SIZE OF CASING | WEIGHT PER FOOT | SETTING DEPTH | SACKS OF CEMENT | EST. TOP |
| 13-5/8 | 11-3/4 | -- | 475' | 457' | Surface |
| 12-1/4 | 8-5/8 | -- | 3805' | 1888' | Surface |
| 7-7/8 | 5-1/2 | 14/15.5# | 4500' | 165 SX "C" | 3600' |

Well was originally drilled by Pure Oil Co. as the Lea "F" State
#2. Union of California plugged and abandoned in 1969. Plugs set
as follows:

20' Cement on CIBP @ 9920
35SX 7118-7226
35SX 6842-6950
35SX 4332-4440
35SX 3742-3850
10SX 0-30

PROPOSED RE-ENTRY PROCEDURE

Drill out plugs and clean hole to 4650'.
Spot @ 35 SX plug at 4650'.
Run and hang a 5-1/2" liner from ±3600' to 4500'.
Cement liner w/ 165 SX.
Perforate Queen interval from ±4430-4440'.
Stimulate and test.
Shaffer Type 45 Mechanical BOP.

IN ABOVE SPACE DESCRIBE PROPOSED PROGRAM: IF PROPOSAL IS TO DEEPEN OR PLUG BACK, GIVE DATA ON PRESENT PRODUCTIVE ZONE AND PROPOSED NEW PRODUCTIVE ZONE. GIVE BLOWOUT PREVENTER PROGRAM, IF ANY.

I hereby certify that the information above is true and complete to the best of my knowledge and belief.

SIGNATURE H. Scott Davis TITLE President DATE 12-8-92
TYPE OR PRINT NAME H. Scott Davis TELEPHONE NO. 915-682-7664

(This space for State Use)

ORIGINAL SIGNED BY JERRY SEXTON
DISTRICT I SUPERVISOR

APPROVED BY _____ TITLE _____ DATE DEC 17 '92

CONDITIONS OF APPROVAL, IF ANY:

Permit Expires 6 Months From Approval
Date Unless Drilling Underway.



SHAFFER MECHANICAL CONTROL GATES

(Patented)

PARTS FOR TYPE 45 DOUBLE GATES

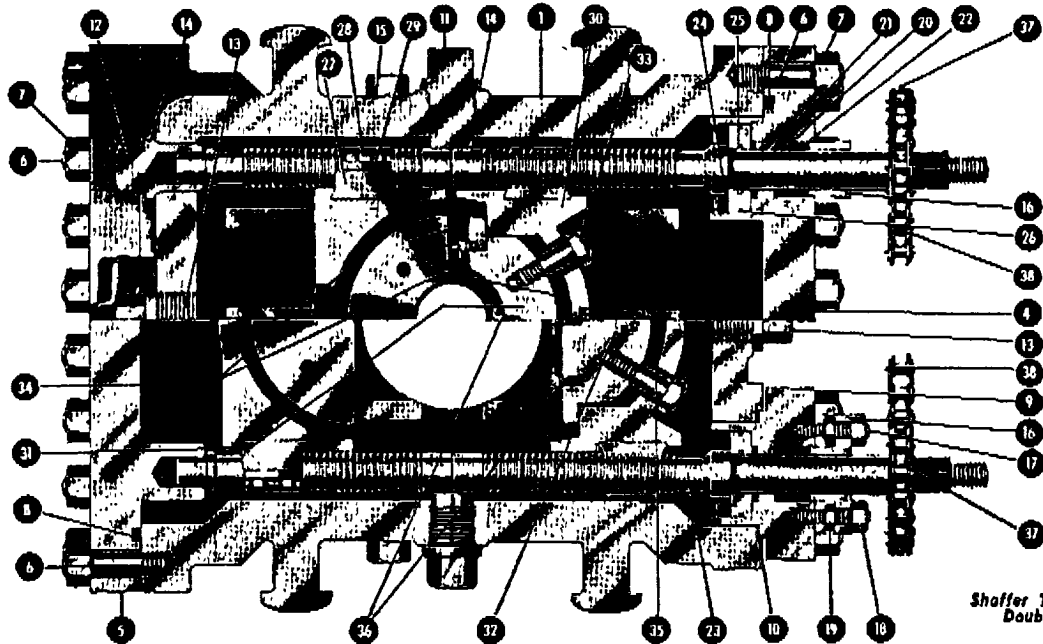


Fig. 84
Shaffer Type 45 Mechanical
Double Control Gate
Top View

| Part No. | No. Req'd. | NAME OF PART | Part No. | No. Req'd. | NAME OF PART | Part No. | No. Req'd. | NAME OF PART |
|----------|------------|--|----------|---------------|-------------------------------------|----------|------------|---|
| 1 | 1 | Body | 18 | 8 | Stuffing Box Gland Stud Nut | 33 | 8 | Ram Block Retracting Screw |
| 2 | Varies | Body Flange Stud (Not Shown) | 19 | 8 | Stuffing Box Gland Jam Nut | 34 | 1 Set | Ram Rubber—Pipe |
| 3 | Varies | Body Flange Stud Nut (Not Shown) | 20 | 4 Sets | Stuffing Box Chevron Packing | 35 | 1 Set | Ram Rubber—Complete Shut-Off |
| 4 | 1 | End Cover—Front | 21 | 4 | Bronze Packing Ring—Lower | 36 | Varies | Ram Rubber Retaining Screw |
| 5 | 1 | End Cover—Rear | 22 | 4 | Bronze Packing Ring—Upper | 37 | 4 | Sprocket |
| 6 | Varies | End Cover & Thrust Plate Stud | 23 | 4 | Operating Screw | 38 | 2 | Sprocket Chain |
| 7 | Varies | End Cover & Thrust Plate Stud Nut | 24 | 4 | Thrust Bearing Plate | 39 | 1 | Sprocket Chain Tightener—Upper (Not Shown) |
| 8 | 2 | End Cover Hydraulic Packing Gasket | 25 | 4 | Thrust Bearing Plate Inner "O" Ring | 40 | 1 | Sprocket Chain Tightener—Lower (Not Shown) |
| 9 | 2 | Thrust Plate | 26 | 4 | Thrust Bearing Plate Outer "O" Ring | 41 | 1 | Sprocket Chain Tightener Cap Screw and Washer—Upper (Not Shown) |
| 10 | 2 | Thrust Plate Gasket | 27 | 4 R.H. & L.H. | Bronze Half Nut | 42 | 2 | Sprocket Chain Tightener Cap Screw and Washer—Lower (Not Shown) |
| 11 | 4 | Side Plug | 28 | 16 | Ram Clip | 43 | 1 | Sprocket Chain Guard (Not Shown) |
| 12 | 2 | End Bearing Plug | 29 | 82 | Ram Clip Cap Screw | 44 | 4 | Sprocket Chain Guard Cap Screw with Washer (Not Shown) |
| 13 | 2 | End Center Plug | 30 | 2 Sets | Ram Block Holder | | | |
| 14 | 8 | End & Side Plug Copper-Asbestos Gasket | 31 | 1 Set | Ram Block—Pipe | | | |
| 15 | 4 | Washout Plug | 32 | 1 Set | Ram Block—Complete Shut-Off | | | |
| 16 | 4 | Stuffing Box Gland | | | | | | |
| 17 | 8 | Stuffing Box Gland Stud | | | | | | |

Fig. 85
Dimensional Elevation—
Shaffer Type 45 Me-
chanical Double Con-
trol Gate

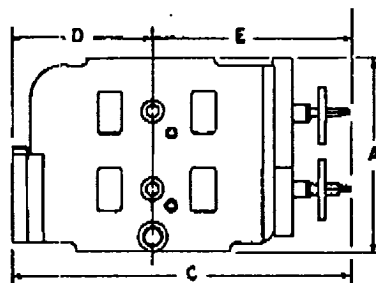
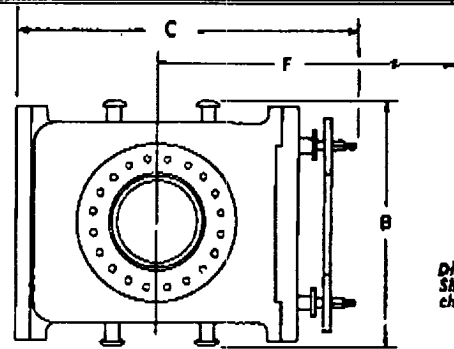


Fig. 86
Dimensional Plan—
Shaffer Type 45 Me-
chanical Double Con-
trol Gate



DIMENSIONAL AND ENGINEERING DATA ON SHAFFER TYPE 45 MECHANICAL DOUBLE CONTROL GATES

| Size | Max. Service Pressure Rating, psi | Test Pressure, psi | Vertical Bore | Approx. Weight, Pounds | Ram Size | A Height | B Width | C Length | D Center To Rear | E Center To Front | F Max. Distance Needed To Change Rams |
|------|-----------------------------------|--------------------|---------------|------------------------|--------------------------|----------|---------|----------|------------------|-------------------|---------------------------------------|
| 6" | 8,000 | 6,000 | 7 1/2" | 9,400 | C.S.O. Thru 5" O.D. | 24 1/4" | 29 1/4" | 41" | 17 1/4" | 28 1/4" | 58 1/4" |
| 8" | 8,000 | 6,000 | 9" | 4,150 | C.S.O. Thru 7" O.D. | 25 1/4" | 30" | 46 1/4" | 19 1/4" | 25 1/4" | 65 1/4" |
| 10" | 8,000 | 6,000 | 11" | 4,900 | C.S.O. Thru 8 1/4" O.D. | 27 1/4" | 31 1/4" | 48" | 21 1/4" | 28 1/4" | 70 1/4" |
| 10" | 5,000 | 10,000 | 11" | 8,925 | C.S.O. Thru 8 1/4" O.D. | 36" | 37" | 51 1/4" | 23" | 28 1/4" | 75 1/4" |
| 12" | 8,000 | 6,000 | 12 1/4" | 5,870 | C.S.O. Thru 10 1/4" O.D. | 28 1/4" | 33 1/4" | 52 1/4" | 23 1/4" | 29 1/4" | 77" |
| 16" | 2,000 | 3,000 | 15 1/4" | 8,025 | C.S.O. Thru 13 1/4" O.D. | 31 1/4" | 36 1/4" | 54 1/4" | 24 1/4" | 30" | 80" |

OIL CONSERVATION DIVISION

P.O. Box 2088
Santa Fe, New Mexico 87504-2088

DISTRICT I

P.O. Box 1980, Hobbs, NM 88240

DISTRICT II

P.O. Drawer DD, Artesia, NM 88210

DISTRICT III

1000 Rio Brazos Rd., Artec, NM 87410

WELL LOCATION AND ACREAGE DEDICATION PLAT

All Distances must be from the outer boundaries of the section

| | | | | |
|---|-------------------------------------|-------------------------------|---|---------------------------------------|
| Operator CAPATAZ OPERATING, INC. | | Lease REEVES STATE | | Well No. 1 |
| Unit Letter 0 | Section 22 | Township 18 SOUTH | Range 35 EAST NMPM | County LEA |
| Actual Footage Location of Well: 330 feet from the SOUTH line and 2194.3 - 2180.5 feet from the EAST line | | | | |
| Ground Level Elev. 3867.5' | Producing Formation Queen | Pool Reeves (Queen) | | Dedicated Acreage: 40 Acres |
| <p>1. Outline the acreage dedicated to the subject well by colored pencil or hatchure marks on the plat below.</p> <p>2. If more than one lease is dedicated to the well, outline each and identify the ownership thereof (both as to working interest and royalty).</p> <p>3. If more than one lease of different ownership is dedicated to the well, have the interest of all owners been consolidated by communitization, unitization, force-pooling, etc.? <input type="checkbox"/> Yes <input type="checkbox"/> No If answer is "yes" type of consolidation _____</p> <p>If answer is "no" list of owners and tract descriptions which have actually been consolidated. (Use reverse side of this form necessary. _____)</p> <p>No allowable will be assigned to the well unit all interests have been consolidated (by communitization, unitization, forced-pooling, otherwise) or until a non-standard unit, eliminating such interest, has been approved by the Division.</p> | | | | |
| <p>NOTE: THIS IS A RE-ENTRY ON AN EXISTING WELL.</p> <p>see orig survey</p> | | | OPERATOR CERTIFICATION <i>I hereby certify that the information contained herein is true and complete to the best of my knowledge and belief.</i> Signature H. Scott Davis Printed Name President Position Capataz Operating, Inc. Company 12-10-92 Date | |
| | | | SURVEYOR CERTIFICATION <i>I hereby certify that the well location shown on this plat was plotted from field notes of actual surveys made by me or under my supervision, and that the same is true and correct to the best of my knowledge and belief.</i> Date Surveyed DECEMBER 04, 1992 Signature & Seal of Professional Surveyor Certificate No. JOHN W. WEST, 678 RONALD J. EASON, 3239 GARY L. JONES, 7977 | |
| | | | | |



STATE OF NEW MEXICO
ENERGY, MINERALS AND NATURAL RESOURCES DEPARTMENT

OIL CONSERVATION DIVISION
HOBBS DISTRICT OFFICE

BRUCE KING
GOVERNOR

December 17, 1992

POST OFFICE BOX 1980
HOBBS, NEW MEXICO 88241-1980
(505) 393-6161

Capataz Operating Inc.
P.O. Box 2083
Midland, TX 79702

Attn: Scott David

RE: REEVES STATE #1
Unit 0, Sec. 22, T18S, R35E

Gentlemen:

We have approved your intent to drill the above-referenced well. You will note we have changed the surface location to 330/S and 2180.5/E as was shown on the original surveyor's plat. I realize this is a slight difference from the new surveyor's plat. However, since we do not require a new surveyor's plat for re-entries it is our policy to go with the original surface location. The original surface location is tied to the API number assigned when that well was drilled.

Very truly yours,

OIL CONSERVATION DIVISION

Jerry Sexton
Supervisor, District I

ed

