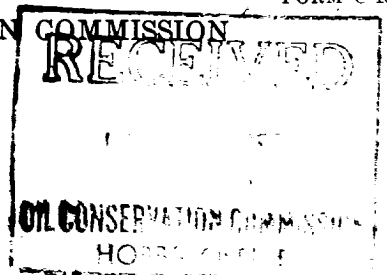


AREA 640 ACRES  
LOCATE WELL CORRECTLY

## NEW MEXICO OIL CONSERVATION COMMISSION

Santa Fe, New Mexico

## WELL RECORD



Mail to Oil Conservation Commission, Santa Fe, New Mexico, or its proper agent not more than twenty days after completion of well. Follow instructions in the Rules and Regulations of the Commission. Indicate questionable data by following it with (?). SUBMIT IN TRIPLICATE.

Gulf Oil Corporation

West Grimes

Well No. 6 Company or Operator SE SW of Sec. 32 Lease T 18-3

R. 38-E, N. M. P. M., Bowers Field, Lea County.

Well is 330' North South East West feet each of the center line and 2310' feet East of the East line of Sec. 32-183-38E

If State land the oil and gas lease is No. \_\_\_\_\_ Assignment No. \_\_\_\_\_

If patented land the owner is \_\_\_\_\_ Address \_\_\_\_\_

If Government land the permittee is \_\_\_\_\_ Address \_\_\_\_\_

The Lessee is Gulf Oil Corp. Fort Worth Production Div. Address Box 1290, Ft. Worth Texas

Drilling commenced 8-16-30 19\_\_\_\_ Drilling was completed 10-10-30 19\_\_\_\_

Name of drilling contractor Tabor Drilling Company Address \_\_\_\_\_

Elevation above sea level at top of casing 3630' feet.

The information given is to be kept confidential until \_\_\_\_\_ 19\_\_\_\_

## OIL SANDS OR ZONES

No. 1, from 3148' to 3204' No. 4, from \_\_\_\_\_ to \_\_\_\_\_

No. 2, from \_\_\_\_\_ to \_\_\_\_\_ No. 5, from \_\_\_\_\_ to \_\_\_\_\_

No. 3, from \_\_\_\_\_ to \_\_\_\_\_ No. 6, from \_\_\_\_\_ to \_\_\_\_\_

## IMPORTANT WATER SANDS

Include data on rate of water inflow and elevation to which water rose in hole.

No. 1, from \_\_\_\_\_ to \_\_\_\_\_ feet.

No. 2, from \_\_\_\_\_ to \_\_\_\_\_ feet.

No. 3, from \_\_\_\_\_ to \_\_\_\_\_ feet.

No. 4, from \_\_\_\_\_ to \_\_\_\_\_ feet.

## CASING RECORD

SIZE	WEIGHT PER FOOT	THREADS PER INCH	MAKE	AMOUNT	KIND OF SHOE	CUT & FILLED FROM	PERFORATED FROM TO	PURPOSE
<u>13-3/8"</u>	<u>54.50#</u>	<u>8 Rnd.</u>	<u>SS</u>	<u>195'</u>	<u>Plugged &amp; Abandoned April 19, 1932</u>			
<u>9-5/8"</u>	<u>36#</u>	<u>10 V</u>	<u>SS</u>	<u>2760'</u>	<u>Set 7" 24 # cement retainer at 3098'</u>			
<u>6-5/8"</u>	<u>24#</u>	<u>10 V</u>	<u>SS</u>	<u>3957'</u>	<u>cement to 3030'</u>			
					<u>Heavy mud 3030' to 1050'</u>			
					<u>Cement 1050' to 950'</u>			
					<u>Heavy mud 950' to 50'</u>			
					<u>Cement 50' to 0'</u>			

## MUDDING AND CEMENTING RECORD

SIZE OF HOLE	SIZE OF CASING	WHERE SET	NO. SACKS OF CEMENT	METHOD USED	MUD GRAVITY	AMOUNT OF MUD USED
<u>13-3/8"</u>		<u>207'</u>	<u>200</u>	<u>HOWCO</u>		
<u>9-5/8"</u>		<u>2770'</u>	<u>600</u>	<u>HOWCO</u>		
<u>6-5/8"</u>		<u>3965'</u>	<u>400</u>	<u>HOWCO</u>		

## PLUGS AND ADAPTERS

Heaving plug—Material \_\_\_\_\_ Length \_\_\_\_\_ Depth Set \_\_\_\_\_

Adapters—Material \_\_\_\_\_ Size \_\_\_\_\_

## RECORD OF SHOOTING OR CHEMICAL TREATMENT

SIZE	SHELL USED	EXPLOSIVE OR CHEMICAL USED	QUANTITY	DATE	DEPTH SHOT OR TREATED	DEPTH CLEANED OUT
			<u>NONE</u>			

Results of shooting or chemical treatment \_\_\_\_\_

NONE

## RECORD OF DRILL-STEM AND SPECIAL TESTS

If drill-stem or other special tests or deviation surveys were made, submit report on separate sheet and attach hereto.

## TOOLS USED

Rotary tools were used from 0' feet to 4166' PB 3207' feet, and from \_\_\_\_\_ feet to \_\_\_\_\_ feet.

Cable tools were used from \_\_\_\_\_ feet to \_\_\_\_\_ feet, and from \_\_\_\_\_ feet to \_\_\_\_\_ feet.

## PRODUCTION

Put to producing 10-10-30 19\_\_\_\_

The production of the first 24 hours was 9492 barrels of fluid of which 99 % was oil; \_\_\_\_\_ %

emulsion: 1 % water; and 1 % sediment. Gravity, Be. \_\_\_\_\_

If gas well, cu. ft. per 24 hours \_\_\_\_\_ Gallons gasoline per 1,000 cu. ft. of gas \_\_\_\_\_

Rock pressure, lbs. per sq. in. \_\_\_\_\_

## EMPLOYEES

Tabor Drilling Co. Driller \_\_\_\_\_ Driller \_\_\_\_\_

Stephens - Gulf Oil Corp. Driller \_\_\_\_\_ Driller \_\_\_\_\_

## FORMATION RECORD ON OTHER SIDE

I hereby swear or affirm that the information given herewith is a complete and correct record of the well and all work done on it so far as can be determined from available records.

Hobbs, New Mexico June 11, 1932

Place Date

Name Ernest Jay

Position Area Prod. Supt.

Representing Gulf Oil Corporation

Company or Operator.

Address Box 2167, Hobbs, New Mexico

## FORMATION RECORD

FROM	TO	THICKNESS IN FEET	FORMATION
0'	50'		Sand
	181'		Sand Rock
	1214'		Red Rock and Shells
	1300'		Anhydrite
	1417'		Red Shale and Shells
	1470'		Anhydrite
	1520'		Red Shale
	1570'		Anhydrite
	1700'		Shale and Salt
	1840'		Anhydrite and Salt
	2460'		Salt
	2590'		Salt and Anhydrite
	2665'		Anhydrite and Potash
	2764'		Anhydrite
	2765'		Lime
	2960'		Anhydrite and Lime
	3000'		Anhydrite
	3010'		Lime
	3020'		Sand
	3060'		Anhydrite
	3100'		Lime
	3120'		Anhydrite
	3155'		Lime
	3175'		Anhydrite
	3195'		Lime
	3215'		Sand
	3270'		Anhydrite
	3300'		Lime
	3330'		Anhydrite
	3350'		Lime
	3390'		Anhydrite
	3400'		Sand
	3450'		Anhydrite
	3550'		Lime
	3575'		Anhydrite
	3615'		Sand
	3650'		Sandy Lime
	3680'		Anhydrite
	3698'		Sand - Gas
	3722'		Sandy Lime
	3749'		Anhydrite
	3760'		Sandy Lime
	3763'		Anhydrite
	3773'		Lime
	3786'		Sandy Lime
	3796'		Lime
	3831'		Anhydrite
	3873'		Lime
	3904'		Shale
	3945'		Sandy Lime
	3973'		Lime
	4021'		Lime and Sand
	4045'		Sandy Lime
	4065'		Hard Lime
	4070'		Sandy Lime
	4100'		Lime
	4115'		Sand
	4120'		Lime
	4165'		Sand
	4166' Total Depth		Lime

This Well drilled and completed in 1930 and no information is available regarding Deviation Tests and Drill Stem Tests.