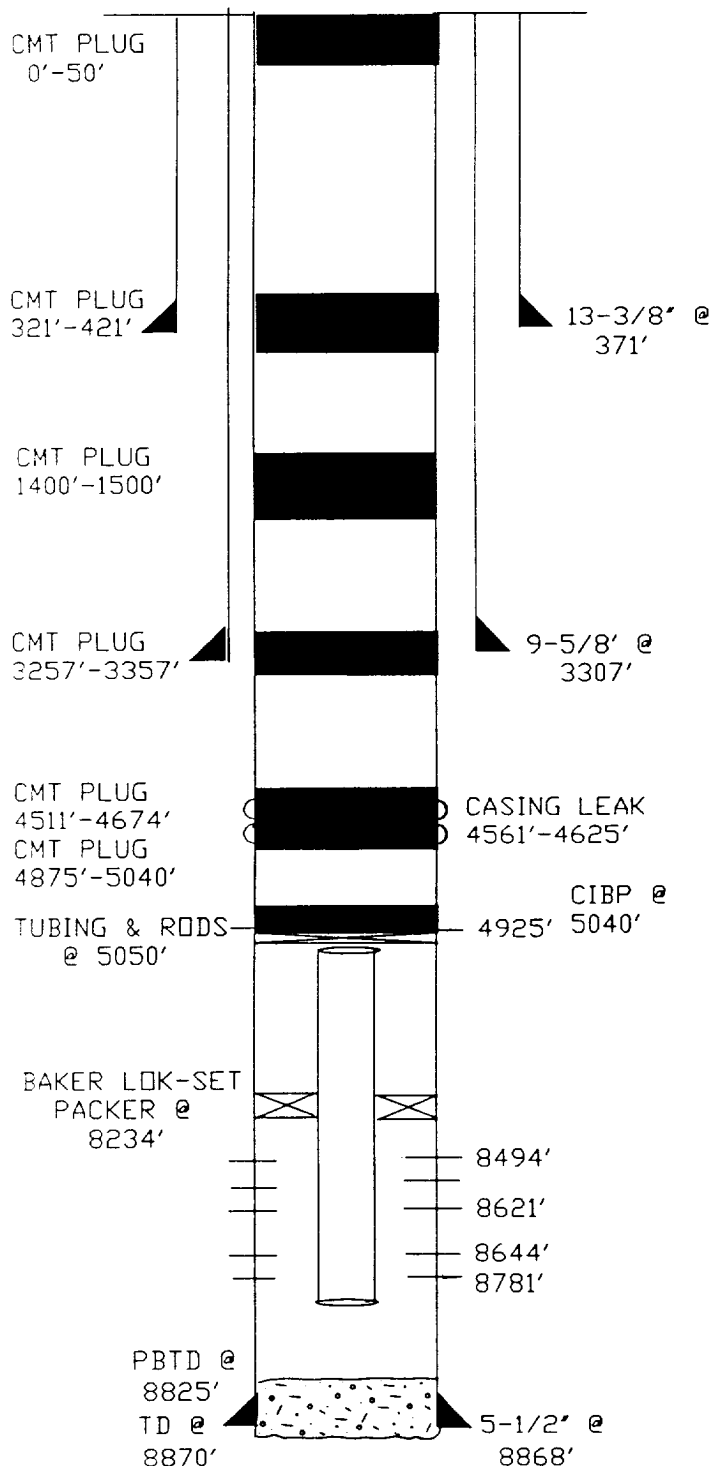


# PROPOSED P & A



VACUUM (ABO REEF)  
 WARN STATE A/C 2 WELL NO. 10  
 1650' FSL & 2233' FWL  
 SECTION 6, T-18-S, R-35-E  
 LEA COUNTY, NEW MEXICO

STATUS: SHUT-IN

TD: 8870'      PBTD: 8825'  
 GL: 3978'      KB: 3990'

SURFACE: 13-3/8", 48#, H-40 SET @ 371'. CMT'D W/ 315 SX TRINITY REGULAR. CIRC TO SURF.

INTERMEDIATE: 9-5/8", 43.5#, N-80 SET @ 3307'.  
 CMT'D W/1540 SX TRINITY REGULAR. CIRC TO SURFACE.

PRODUCTION: 5-1/2", 17#, N-80 & J-55 SET @ 8868'  
 CMT'D W/150 SX DIAMIX A & INCOR CEMENT W/11% GEL TAILED W/370 SX TRINITY REGULAR. TOC @ 225' (TEMP SURVEY).

TUBING: 279 JTS 2-3/8", 4.7#, N-80 SET @ 8770'.  
 BAKER LOK-SET PACKER @ 8234'.

RODS: 93 - 7/8" RODS  
 256 - 3/4" RODS  
 2' X 1-1/4" X 16' RHBC PUMP

PRESENT COMPLETION: ABO REEF

8494'-95', 8506'-07, 23'-24', 40'-41', 50'-51',  
 57'-58', 75'-76', 83'-84', 89'-90', 8612'-13',  
 20'-21' W/2 SPF.

8644'-45', 52'-53', 66'-67', 70'-71', 74'-75',  
 8713'-14', 39'-40', 58'-59', 80'-81' W/4 SPF.

HISTORY: DRILLED IN MAY, 1963. COMPLETED IN ABO REEF F/8494'-8781'. A/2000 GALS. AF/15000 GALS THIN RETARDED ACID. TRIED TO ISOLATE SAN ANDRES/GLORIETTA IN MARCH, 1979 BECAUSE TOC WAS THOUGHT TO BE @ 6155'. PERFORATED CASING W/3 SHOTS @ 4925'. TRIED TO PUMP DOWN TUBING @ 2000#. COULD NOT. TOC WAS LATER DETERMINED TO BE 225' FROM TEMPERATURE SURVEY. SHUT-IN DECEMBER, 1989 AFTER PRODUCING 234 MBO, 771 MMCF, & 18 MBW FROM ABO REEF.

10-89 RU TO FIND CASING LEAK. LOCATED LEAK BETWEEN 4561'-4624'. PRESSURED CASING TO 1000#. LOST 400# IN 2 MINUTES.

11-92 RU TO RECOMPLETE TO DRINKARD. COULD NOT POOH W/TUBING & RODS. MILLED OVER AND FISHED TUBING & RODS TO 5050' IN 3+ WEEKS.

PREPARED BY B. D. LOCKHART