

NUMBER OF COPIES RECEIVED	
DISTRIBUTION	
SANTA FE	
FILE	
U.S.G.S.	
LAND OFFICE	
TRANSPORTER	OIL
	GAS
PRODUCTION OFFICE	
OPERATOR	

NEW MF DO OIL CONSERVATION COMMIS N
Santa Fe, New Mexico

Form C-101
Revised (12/1/55)

NOTICE OF INTENTION TO DRILL

Notice must be given to the District Office of the Oil Conservation Commission and approval obtained before drilling or recompletion begins. If changes in the proposed plan are considered advisable, a copy of this notice showing such changes will be returned to the sender. Submit this notice in QUINTUPLICATE. One copy will be returned following approval. See additional instructions in Rules and Regulations of the Commission. If State Land submit 6 Copies Attach Form C-128 in triplicate to first 3 copies of form C-101

Hobbs, New Mexico

June 28, 1963

(Place)

(Date)

OIL CONSERVATION COMMISSION
SANTA FE, NEW MEXICO

Gentlemen:

You are hereby notified that it is our intention to commence the Drilling of a well to be known as

Marathon Oil Company

(Company, or Operator)

State Warn A/C 2

(Lease)

Well No. 11, in L The well is

(Unit)

located 910' feet from the west line and 1650' feet from the south line of Section 6, T. 18-S, R. 35-E, NMPM.

(GIVE LOCATION FROM SECTION LINE)

Vacuum Abo

Lea

County

If State Land the Oil and Gas Lease is No. 387

If patented land the owner is Giles Lee

Address Lovington, New Mexico

We propose to drill well with drilling equipment as follows: Rotary Tools

The status of plugging bond is Current

Drilling Contractor A. W. Thompson

214 Midland National Bank Building
Midland, Texas

We intend to complete this well in the Abo Reef formation at an approximate depth of 9100' feet.

CASING PROGRAM

We propose to use the following strings of Casing and to cement them as indicated:

Size of Hole	Size of Casing	Weight per Foot	New or Second Hand	Depth	Sacks Cement
17-1/2"	13-3/8"	48#	New	350	350
12-1/4"	8-5/8"	24# & 32#	New	3400'	1500
7-7/8"	5-1/2"	17#	New	8900'	1700

If changes in the above plans become advisable we will notify you immediately.

ADDITIONAL INFORMATION (If recompletion give full details of proposed plan of work.)

DIST:

NMOCC

Comm. of Public Lands

J. A. Grimes C.M. Lynch

L. H. Shearer J.R. Barber

D. V. Kitley L. H. Davis

T. A. Steele File

Sincerely yours,

Marathon Oil Company

(Company or Operator)

By

Position

Asst. Superintendent

Send Communications regarding well to

Marathon Oil Company

Name

Box 220, Hobbs, New Mexico

Address

Approved, 19
Except as follows:

OIL CONSERVATION COMMISSION

By

NEW MEXICO OIL CONSERVATION COMMISSION
WELL LOCATION AND ACREAGE DEDICATION PLAT

FORM C-128
 Revised 5/1/57

HOBBS OFFICE OGC

SEE INSTRUCTIONS FOR COMPLETING THIS FORM ON THE REVERSE SIDE

SECTION A

1963 JUL

Operator MARATHON OIL CO.	Lease STATE WARN ACCOUNT 2	Well No. 11 1 : 35
-------------------------------------	--------------------------------------	---------------------------

Unit Letter L	Section 6	Township 18 SOUTH	Range 35 EAST	County LEA
-------------------------	---------------------	-----------------------------	-------------------------	----------------------

Actual Footage Location of Well:
1650 feet from the **SOUTH** line and **910.5** feet from the **WEST** line

Ground Level Elev. 3975.5	Producing Formation Abo	Pool Vacuum Abo	Dedicated Acreage: 37.57 Acres
-------------------------------------	-----------------------------------	---------------------------	--

1. Is the Operator the only owner in the dedicated acreage outlined on the plat below? YES X NO ____ . ("Owner" means the person who has the right to drill into and to produce from any pool and to appropriate the production either for himself or for himself and another. (63-3-29 (a) NMSA 1935 Comp.)
2. If the answer to question one is "no," have the interests of all the owners been consolidated by communitization agreement or otherwise? YES ____ NO ____ . If answer is "yes," Type of Consolidation _____
3. If the answer to question two is "no," list all the owners and their respective interests below:

Owner	Land Description

SECTION B

CERTIFICATION

I hereby certify that the information in SECTION A above is true and complete to the best of my knowledge and belief.

Robert L. McLean
 Name

R. L. McLean
 Position

Petroleum Engineer
 Company

Marathon Oil Company
 Date

6-28-63

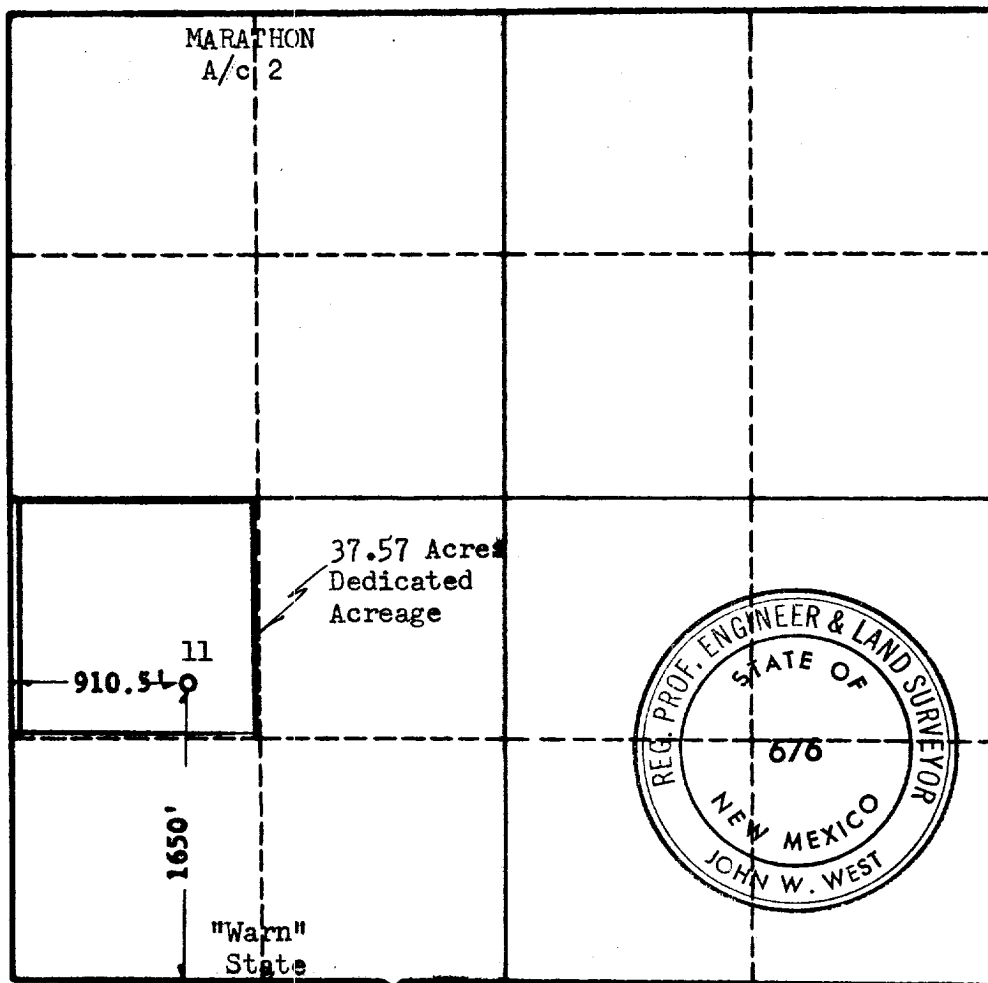
I hereby certify that the well location shown on the plat in SECTION B was plotted from field notes of actual surveys made by me or under my supervision, and that the same is true and correct to the best of my knowledge and belief.

Date Surveyed
6-28-1963

Registered Professional Engineer and/or Land Surveyor, **JOHN W. WEST**

John W. West

Certificate No.
N. M. - P. E. & L. S. NO. 676



0 330 660 990 1320 1650 1980 2310 2640 2000 1500 1000 500 0