

NUMBER OF COPIES RECEIVED	
DISTRIBUTION	
SANTA FE	
FILE	
U.S.G.S	
LAND OFFICE	
TRANSPORTER	OIL
	GAS
PRODUCTION OFFICE	
OPERATOR	

NEW MEXICO OIL CONSERVATION COMMISSION  
Santa Fe, New Mexico

Form C-101  
Revised (12/1/55)

# NOTICE OF INTENTION TO DRILL

Notice must be given to the District Office of the Oil Conservation Commission and approval obtained before drilling or recompletion begins. If changes in the proposed plan are considered advisable, a copy of this notice showing such changes will be returned to the sender. Submit this notice in QUINTUPLICATE. One copy will be returned following approval. See additional instructions in Rules and Regulations of the Commission. If State Land submit 6 Copies Attach Form C-128 in triplicate to first 3 copies of form C-101

Hobbs, New Mexico

September 5, 1963

(Place)

(Date)

OIL CONSERVATION COMMISSION  
SANTA FE, NEW MEXICO

Gentlemen:

You are hereby notified that it is our intention to commence the Drilling of a well to be known as

TEXACO Inc.

(Company, or Operator)

State of New Mexico "AE"

(Lease)

Well No. 15

in G

(Unit)

The well is

located 1980 feet from the North line and 1980 feet from the

East

line of Section 11

T. 18-S

R. 34-E

NMPM.

(GIVE LOCATION FROM SECTION LINE)

Vacuum Abo Reef

Pool,

Lea

County

B-1258-1

If State Land the Oil and Gas Lease is No.

If patented land the owner is.

Address.

We propose to drill well with drilling equipment as follows: Rotary

The status of plugging bond is \$10,000 Blanket Surety Bond of Maryland Casualty Company filed with State Geologist

Drilling Contractor Unknown at present

We intend to complete this well in the Abo Reef

formation at an approximate depth of 9050 feet.

## CASING PROGRAM

We propose to use the following strings of Casing and to cement them as indicated:

Size of Hole	Size of Casing	Weight per Foot	New or Second Hand	Depth	Sacks Cement
		SEE ATTACHED SHEET			

If changes in the above plans become advisable we will notify you immediately.

ADDITIONAL INFORMATION (If recompletion give full details of proposed plan of work.)

Approved \_\_\_\_\_, 19\_\_\_\_  
Except as follows:

Sincerely yours,

TEXACO Inc.

(Company of Operator)

By

J.G. Blevins, Jr.

Position

Assistant District Superintendent

Send Communications regarding well to

Name

J. H. Markley

P.O. Box 3109-Midland, Texas

By \_\_\_\_\_

OIL CONSERVATION COMMISSION

Cement must tie back casing

### CASING PROGRAM

We propose to use the following strings of casing and to cement them as indicated:

SIZE OF HOLE	SIZE OF CASING	WEIGHT PER FT	NEW OR SECOND HAND	DEPTH	SACKS CEMENT
15	11-3/4"	42,23,72	New	350	300
10-5/8"	8-5/8"	24 & 32	New	3150	*
7-5/8"	2-7/8"	6.5	New	9050	**

\* 1500 sx 1:1 Pozmix-Portland regular cement mixture, 8% gel, followed by 150 sx Portland neat.

\*\* Externally clean and install centralizers and scratchers 8200-TD. Cmt with 500 sx Class "C" 8% gel containing friction reducing agent, followed by 800 sx Class "C" 8% gel, followed by 300 sx Class "C" 4% gel.

### FORMATION TOPS

Anhydrite	1700
Top of Salt	1775
Base of Salt	2845
Yates	2900
Seven Rivers	3120
San Andres	4830
Top of Abo Reef	8255
Total Depth	9050

**NEW MEXICO OIL CONSERVATION COMMISSION**  
**WELL LOCATION AND ACREAGE DEDICATION PLAT**

FORM C-128  
Revised 5/1/57

SEE INSTRUCTIONS FOR COMPLETING THIS FORM ON THE REVERSE SIDE

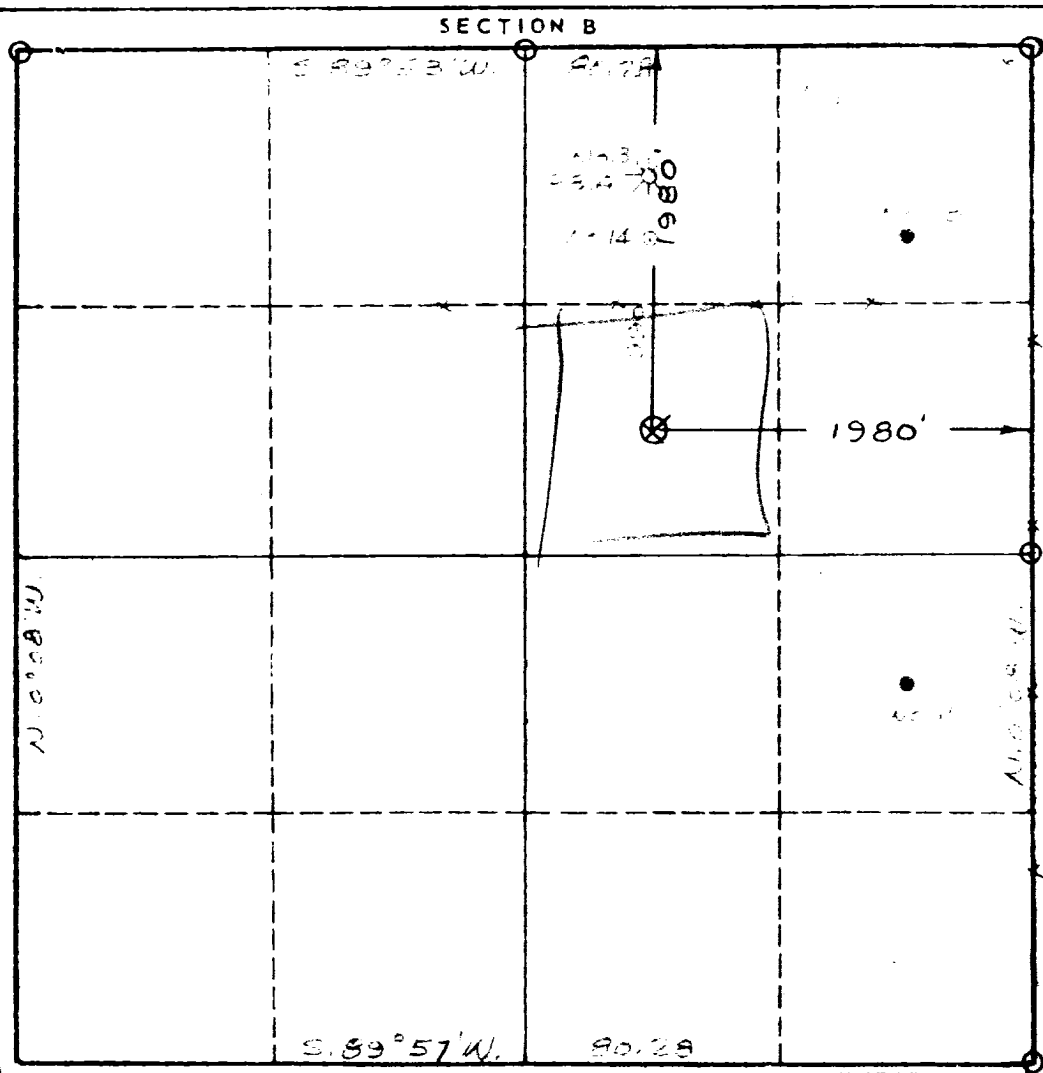
**SECTION A**

Operator <b>TEXACO, Inc.</b>			Lease <b>STATE OF NEW MEXICO "AE"</b>		Well No. <b>15</b>
Unit Letter <b>G</b>	Section <b>11</b>	Township <b>18 South</b>	Range <b>34 East</b>	County <b>Lea</b>	
Actual Footage Location of Well: <b>1980</b> feet from the <b>North</b> line and <b>1980</b> feet from the <b>East</b> line					
Ground Level Elev. <b>3999</b>	Producing Formation <b>Abo Reef</b>	Pool <b>Vacuum Abo Reef</b>		Dedicated Acreage: <b>40</b> Acres	

1. Is the Operator the only owner in the dedicated acreage outlined on the plat below? YES ☒ NO ☐. ("Owner" means the person who has the right to drill into and to produce from any pool and to appropriate the production either for himself or for himself and another. (65-3-29 (e) NMSA 1935 Comp.)
2. If the answer to question one is "no," have the interests of all the owners been consolidated by communitization agreement or otherwise? YES ☐ NO ☐. If answer is "yes," Type of Consolidation \_\_\_\_\_
3. If the answer to question two is "no," list all the owners and their respective interests below:

Owner	Land Description

**SECTION B**



**CERTIFICATION**

I hereby certify that the information in SECTION A above is true and complete to the best of my knowledge and belief.

Name *J. M. Shively*  
 Position Assistant District Superintendent  
 Company Texaco, Inc.  
 Date September 5, 1963

I hereby certify that the well location shown on the plat in SECTION B was plotted from field notes of actual surveys made by me or under my supervision, and that the same is true and correct to the best of my knowledge and belief.

Date Surveyed September 4, 1963  
 Registered Professional Engineer and/or Land Surveyor

*John W. Shively*  
 Certificate No. 1559

0 330 660 990 1320 1650 1980 2310 2640 2000 1500 1000 500 0