

NUMBER OF COPIES RECEIVED	
DISTRIBUTION	
SANTA FE	
FILE	
U.S.G.S.	
LAND OFFICE	
TRANSPORTER	OIL GAS
PRODUCTION OFFICE	
OPERATOR	

NEW MEXICO OIL CONSERVATION COMMISSION
Santa Fe, New Mexico

Form C-101
Revised (12/1/55)

NOTICE OF INTENTION TO DRILL

Notice must be given to the District Office of the Oil Conservation Commission and approval obtained before drilling or recompletion begins. If changes in the proposed plan are considered advisable, a copy of this notice showing such changes will be returned to the sender. Submit this notice in **QUINTUPPLICATE**. One copy will be returned following approval. See additional instructions in Rules and Regulations of the Commission. If State Land submit 6 Copies Attach Form C-128 in triplicate to first 3 copies of form C-101

Roswell, New Mexico

June 10, 1963

(Place)

(Date)

OIL CONSERVATION COMMISSION
SANTA FE, NEW MEXICO

Gentlemen:

You are hereby notified that it is our intention to commence the Drilling of a well to be known as
Shell Oil Company

(Company or Operator)

State VAA

(Lease)

Well No. 5, in E The well is

(Unit)

located 2310 feet from the south line and 330 feet from the west line of Section 5, T. 18S, R. 35E, NMPM.

(GIVE LOCATION FROM SECTION LINE) Vacuum San Andres Pool, Lea County

R-35-E

D	C	B	A
E	F	G	H
X	L	K	J
M	N	O	P

T
18
S

If State Land the Oil and Gas Lease is No. E-6504

If patented land the owner is -

Address -

We propose to drill well with drilling equipment as follows: Rotary Tools

The status of plugging bond is Blanket

Drilling Contractor undetermined

We intend to complete this well in the San Andres formation at an approximate depth of 4800 feet.

CASING PROGRAM

We propose to use the following strings of Casing and to cement them as indicated:

Size of Hole	Size of Casing	Weight per Foot	New or Second Hand	Depth	Sacks Cement
9 5/8"	7 5/8"	24#	new	300'	300
6 3/4"	4 1/2"	9.5# & 11.6#	new	4800'	325

If changes in the above plans become advisable we will notify you immediately.

ADDITIONAL INFORMATION (If recompletion give full details of proposed plan of work.)

Approved _____, 19_____
Except as follows:

Sincerely yours,

Shell Oil Company

(Company or Operator)

By R. A. Lowery Original Signed By R. A. LOWERY

Position District Exploitation Engineer
Send Communications regarding well to

Name Shell Oil Company

Address P. O. Box 1858, Roswell, New Mexico

OIL CONSERVATION COMMISSION

By Leslie G. Clements

NUMBER OF COPIES RECEIVED	
DISTRIBUTION	
SANTA FE	
FILE	
U.S.G.S	
LAND OFFICE	
TRANSPORTER	OIL GAS
PRODUCTION OFFICE	
OPERATOR	

NEW MEXICO OIL CONSERVATION COMMISSION

WELL LOCATION AND ACREAGE DEDICATION PLAT

SEE INSTRUCTIONS FOR COMPLETING THIS FORM ON THE REVERSE SIDE

FORM C-128
Revised 5/1/57

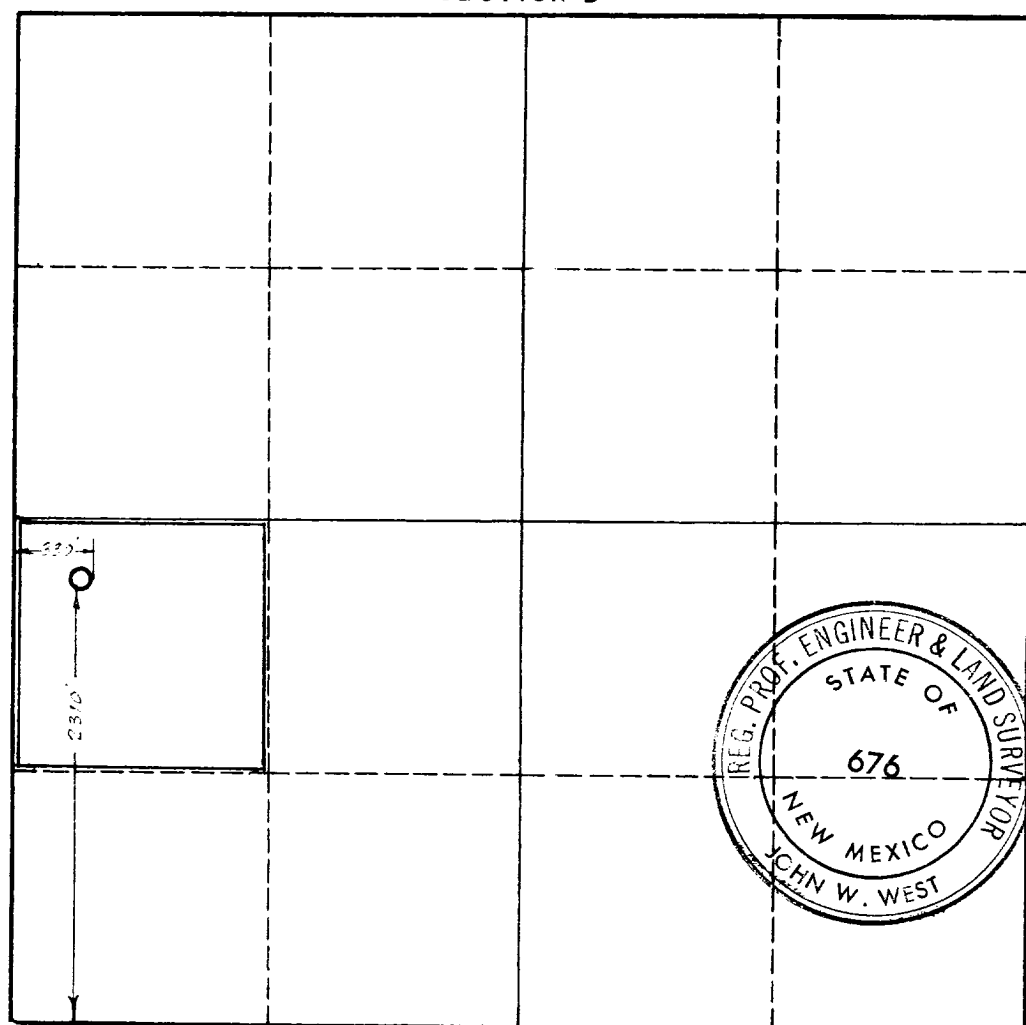
SECTION A

Operator Shell Oil Company		Lease State VAA		Well No. 5
Unit Letter E	Section 5	Township 18S	Range 35E	County Lea
Actual Footage Location of Well: 2310 feet from the South line and 330 feet from the West line				
Ground Level Elev. not available	Producing Formation San Andres	Pool Vacuum San Andres	Dedicated Acreage: 40 Acres	

1. Is the Operator the only owner in the dedicated acreage outlined on the plat below? YES ☒ NO ____ . ("Owner" means the person who has the right to drill into and to produce from any pool and to appropriate the production either for himself or for himself and another. (65-3-29 (e) NMSA 1935 Comp.)
2. If the answer to question one is "no," have the interests of all the owners been consolidated by communitization agreement or otherwise? YES ____ NO ____ . If answer is "yes," Type of Consolidation ____
3. If the answer to question two is "no," list all the owners and their respective interests below:

Owner	Land Description

SECTION B



CERTIFICATION

I hereby certify that the information in SECTION A above is true and complete to the best of my knowledge and belief.

Original Signed By	
Name	J. A. Hardwick
Position	Acting District Exploration Engineer
Company	Shell Oil Company
Date	June 5, 1963

I hereby certify that the well location shown on the plat in SECTION B was plotted from field notes of actual surveys made by me or under my supervision, and that the same is true and correct to the best of my knowledge and belief.

Date Surveyed	6-5-63
Registered Professional Engineer and/or Land Surveyor	John W. West

Certificate No. **676**

0 330 660 990 1320 1650 1980 2310 2640 2000 1500 1000 500 0

INSTRUCTIONS FOR COMPLETION OF FORM C-128

1. Operator shall furnish and certify to the information called for in Section A.
2. Operator shall outline the dedicated acreage for *both* oil and gas wells on the plat in Section B.
3. A registered professional engineer or land surveyor registered in the State of New Mexico or approved by the Commission shall show on the plat the location of the well and certify this information in the space provided.
4. All distances shown on the plat must be from the outer boundaries of the Section.
5. If additional space is needed for listing owners and their respective interests as required in question 3 of Section A, please use space below.