

NUMBER OF COPIES RECEIVED	
DISTRIBUTION	
SANTA FE	
FILE	
U.S.G.S.	
LAND OFFICE	
TRANSPORTER	OIL GAS
PRODUCTION OFFICE	
OPERATOR	

NEW MEXICO OIL CONSERVATION COMMISSION
Santa Fe, New Mexico

Form G-101
Revised (12/1/55)

1100BS OFFICE 000

1963 JUL 12

NOTICE OF INTENTION TO DRILL

Notice must be given to the District Office of the Oil Conservation Commission and approval obtained before drilling or recompletion begins. If changes in the proposed plan are considered advisable, a copy of this notice showing such changes will be returned to the sender. Submit this notice in QUINTUPLICATE. One copy will be returned following approval. See additional instructions in Rules and Regulations of the Commission. If State Land submit 6 Copies Attach Form G-128 in triplicate to first 3 copies of form G-101

Midland, Texas

July 11, 1963

(Place)

(Date)

OIL CONSERVATION COMMISSION
SANTA FE, NEW MEXICO

Gentlemen:

You are hereby notified that it is our intention to commence the Drilling of a well to be known as

DOB Oil Properties, Inc.

(Company, or Operator)

State M

(Lease)

Well No. 2

F

(Unit)

The well is

located 2176 feet from the West line and 1650 feet from the

North

line of Section 7, T. 18S, R. 34E, NMPM.

(GIVE LOCATION FROM SECTION LINE) Vacuna (Queen) Pool, Lea County

If State Land the Oil and Gas Lease is No. OG 2414

If patented land the owner is

Address

We propose to drill well with drilling equipment as follows: Rotary & Cable Tool

The status of plugging bond is Blanket Bond

Drilling Contractor Cactus Drilling Company

Box 32

Midland, Texas

We intend to complete this well in the Queen

formation at an approximate depth of 4520 feet.

CASING PROGRAM

We propose to use the following strings of Casing and to cement them as indicated:

Size of Hole	Size of Casing	Weight per Foot	New or Second Hand	Depth	Sacks Cement
13	10 3/4	32.75	new	350	200
6 3/4	4 1/2	21.80	new	4530	400

If changes in the above plans become advisable we will notify you immediately.

ADDITIONAL INFORMATION (If recompletion give full details of proposed plan of work.)

Approved....., 19.....
Except as follows:

Sincerely yours,

DOB Oil Properties, Inc.

(Company or Operator)

By

Position Agent

Send Communications regarding well to

Name

Address

OIL CONSERVATION COMMISSION

by

NEW MEXICO OIL CONSERVATION COMMISSION
WELL LOCATION AND ACREAGE DEDICATION PLAT

FORM C-128
Revised 3/1/57

HOBBS OFFICE 000

SEE INSTRUCTIONS FOR COMPLETING THIS FORM ON THE REVERSE SIDE

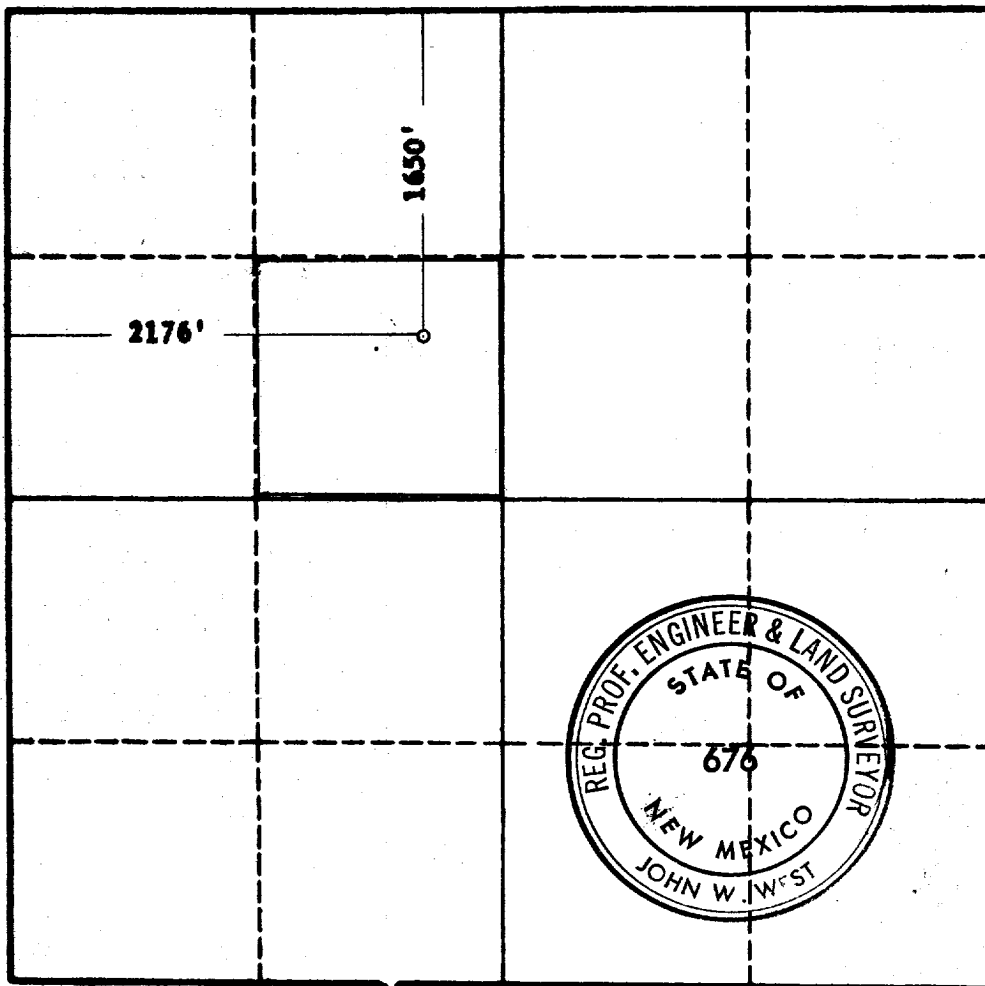
SECTION A

Operator D O B OIL PROPERTIES, INC.			Lease STATE M		
Unit Letter F	Section 7	Township 18 SOUTH	Range 34 EAST	County LEA	
Actual Footage Location of Well: 2176 feet from the WEST line and 1650 feet from the NORTH line					
Ground Level Elev. 4095.2	Producing Formation Quartz		Pool Vacuum (Quartz)	Dedicated Acreage: 48 Acres	

1. Is the Operator the only owner in the dedicated acreage outlined on the plat below? YES ☒ NO ☐ ("Owner" means the person who has the right to drill into and to produce from any pool and to appropriate the production either for himself or for himself and another. (65-3-29 (e) NMSA 1935 Comp.)
2. If the answer to question one is "no," have the interests of all the owners been consolidated by communitization agreement or otherwise? YES ☐ NO ☐ If answer is "yes," Type of Consolidation _____
3. If the answer to question two is "no," list all the owners and their respective interests below:

Owner	Land Description

SECTION B



CERTIFICATION

I hereby certify that the information in SECTION A above is true and complete to the best of my knowledge and belief.

Name <i>James Smith</i>
Position AGENT
Company DOB Oil Properties, Inc.
Date July 11, 1963

I hereby certify that the well location shown on the plat in SECTION B was plotted from field notes of actual surveys made by me or under my supervision, and that the same is true and correct to the best of my knowledge and belief.

Date Surveyed 4-10-63
Registered Professional Engineer and/or Land Surveyor, JOHN W. WEST
Certificate No. <i>John W. West</i>
N. M. - P. E. & L. S. NO. 676

0 330 660 990 1320 1650 1980 2310 2640 2970 3300 3630 3960 4290 4620 4950 5280 5610 5940 6270 6600