

NUMBER OF COPIES RECEIVED	
DISTRIBUTION	
SANTA FE	
FILE	
U.S.G.	
LAND OFFICE	
TRANSPORTER	OIL
PRODUCTION OFFICE	GAS
OPERATOR	

NEW M. DO OIL CONSERVATION COMMISSION
Santa Fe, New Mexico

Form C-101
Revised (12/1/55)

NOTICE OF INTENTION TO DRILL

Notice must be given to the District Office of the Oil Conservation Commission and approval obtained before drilling or recompletion begins. If changes in the proposed plan are considered advisable, a copy of this notice showing such changes will be returned to the sender. Submit this notice in QUINTUPLICATE. One copy will be returned following approval. See additional instructions in Rules and Regulations of the Commission. If State Land submit 6 Copies Attach Form C-128 in triplicate to first 3 copies of form C-101

Robbs, New Mexico
(Place)

July 6, 1964
(Date)

OIL CONSERVATION COMMISSION
SANTA FE, NEW MEXICO

Gentlemen:

You are hereby notified that it is our intention to commence the Drilling of a well to be known as

Continental Oil Company

(Company or Operator)

Goodwin 30
(Lease)

Well No. 2

in F
(Unit)

The well is

located 1920 feet from the North line and 1930 feet from the West line of Section 30, T. 18S, R. 37E, NMPM.

(GIVE LOCATION FROM SECTION LINE)

Abo

Pool

Loc

County

If State Land the Oil and Gas Lease is No.

If patented land the owner is Alva Goodwin

Address Box 460, Robbs, New Mexico

We propose to drill well with drilling equipment as follows: rotary tools

The status of plugging bond is blank

Drilling Contractor Unknown

We intend to complete this well in the Abo Reef formation at an approximate depth of 7,600 feet.

CASING PROGRAM

We propose to use the following strings of Casing and to cement them as indicated:

Size of Hole	Size of Casing	Weight per Foot	New or Second Hand	Depth	Sacks Cement
15"	11 3/4 OD	42#	New	550	138
10 5/8"	9 5/8 OD	24 & 32#	New	3210	102
7 7/8"	5 1/2 OD	14, 15, 50, 17#	New	7630	492

If changes in the above plans become advisable we will notify you immediately.

ADDITIONAL INFORMATION (If recompletion give full details of proposed plan of work.)

INFO (6) SLS JM

info

Approved _____, 19____
Except as follows:

Sincerely yours,

Continental Oil Company
(Company or Operator)

By

Position State Supervisor

Send Communications regarding well to

Name Continental Oil Company

Address Box 460, Robbs, New Mexico

OIL CONSERVATION COMMISSION

By

NEW MEXICO OIL CONSERVATION COMMISSION
WELL LOCATION AND ACREAGE DEDICATION PLAT

FORM C-128
HOBBS OFFICE 8/1/57

SEE INSTRUCTIONS FOR COMPLETING THIS FORM ON THE REVERSE SIDE

JUL 7 10 34 AM '64

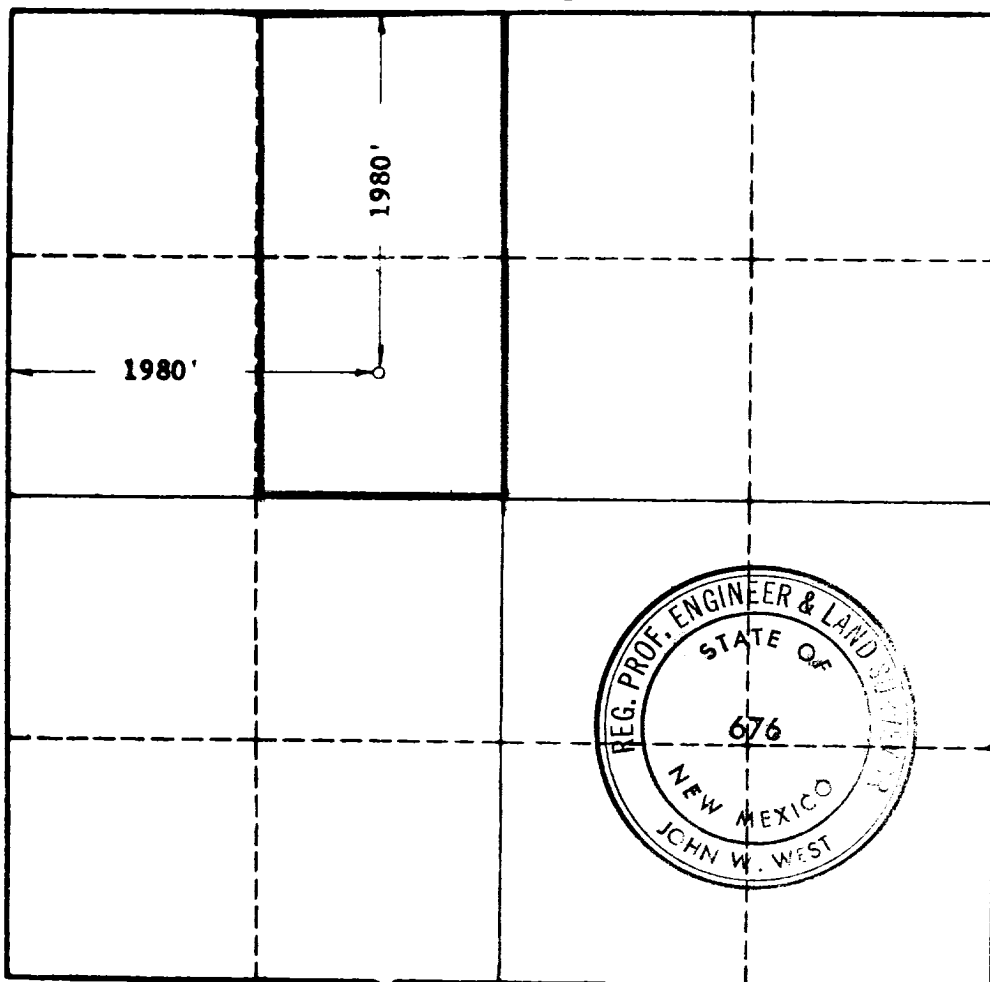
SECTION A

Operator CONTINENTAL OIL COMPANY		Lease GOODWIN 30		Well No. 2
Unit Letter F	Section 30	Township 18 SOUTH	Range 37 EAST	County LEA
Actual Footage Location of Well: 1980 feet from the NORTH line and 1980 feet from the WEST line				
Ground Level Elev.	Producing Formation Abo Reef	Pool Abo	Dedicated Acreage: 4.80 Acres	

1. Is the Operator the only owner in the dedicated acreage outlined on the plat below? YES ☒ NO ☐ ("Owner" means the person who has the right to drill into and to produce from any pool and to appropriate the production either for himself or for himself and another. (65-3-29 (e) NMSA 1935 Comp.)
2. If the answer to question one is "no," have the interests of all the owners been consolidated by communitization agreement or otherwise? YES ☐ NO ☐ If answer is "yes," Type of Consolidation _____
3. If the answer to question two is "no," list all the owners and their respective interests below:

Owner	Land Description

SECTION B



CERTIFICATION

I hereby certify that the information in SECTION A above is true and complete to the best of my knowledge and belief.

Name
Position Staff Supervisor
Company Continental Oil Company
Date 7-6-64

NMOCC(5) JM

I hereby certify that the well location shown on the plat in SECTION B was plotted from field notes of actual surveys made by me or under my supervision, and that the same is true and correct to the best of my knowledge and belief.

Date Surveyed JULY 2, 1964
Registered Professional Engineer and/or Land Surveyor, JOHN W. WEST
Certificate No. N.M. - P.E. & L.S. NO. 676

0 330 660 990 1320 1650 1980 2310 2640 2000 1500 1000 500