

Form with fields: NUMBER OF COPIES RECEIVED, DISTRIBUTION, SANTA FE, FILE, U.S.G.S., LAND OFFICE, TRANSPORTER, OIL, GAS, PROGRATION OFFICE, OPERATOR

NEW MEXICO OIL CONSERVATION COMMISSION
Santa Fe, New Mexico

Form C-101
Revised (12/1/55)

NOTICE OF INTENTION TO DRILL

HOBBS OFFICE O. C. C.

Notice must be given to the District Office of the Oil Conservation Commission and approval obtained before drilling or recompletion begins. If changes in the proposed plan are considered advisable, a copy of this notice showing such changes will be returned to the sender. Submit this notice in QUINTUPPLICATE. One copy will be returned following approval. See additional instructions in Rules and Regulations of the Commission.

If State Land submit 6 Copies Attach Form C-128 in triplicate to first 3 copies of form C-101

Hobbs, New Mexico

December 26, 1963

(Place)

(Date)

OIL CONSERVATION COMMISSION
SANTA FE, NEW MEXICO

Gentlemen:

You are hereby notified that it is our intention to commence the Drilling of a well to be known as

Pan American Petroleum Corporation

State N.M.

(Company, or Operator)

1

P

Well No.

in

The well is

(Lease)

(Unit)

located 330 feet from the South line and 990 feet from the East

line of Section

3

T 13-S

R. 34-E

NMPM.

(GIVE LOCATION FROM SECTION LINE)

Section Abo

Pool

Lea

County

If State Land the Oil and Gas Lease is No.

B-10754

If patented land the owner is

Address

We propose to drill well with drilling equipment as follows:

C-TD /rotary tools.

The status of plugging bond is

Blanket bond on file with Commission

Drilling Contractor

To be furnished at a later date

We intend to complete this well in the

Abo reef

formation at an approximate depth of

9100'

feet.

CASING PROGRAM

We propose to use the following strings of Casing and to cement them as indicated:

Size of Hole	Size of Casing	Weight per Foot	New or Second Hand	Depth	Sacks Cement
17-1/2"	13-3/8"	55.6	Now	300	Circulate
12-1/4"	8-5/8"	28	Now	3400	(1)
7-7/8"	4-1/2"	9.5-10.6	Now	9100	(2) X

If changes in the above plans become advisable we will notify you immediately.

ADDITIONAL INFORMATION (If recompletion give full details of proposed plan of work.)

(1) Sufficient to fill to base of salt.

X (2) Sufficient to cover 600' above uppermost pay.

Approved: DEC 27 1963, 19

Except as follows:

Cement must be back

X into

278

cond.

OIL CONSERVATION COMMISSION

Sincerely yours,

Pan American Petroleum Corporation

(Company or Operator)

Original Signed by:

By: V. E. STALEY

Position

Area Superintendent

Send Communications regarding well to

V. E. Staley

Name

Box 68 - Hobbs, N.M.

Address

NEW MEXICO OIL CONSERVATION COMMISSION
WELL LOCATION AND ACREAGE DEDICATION PLAT

FORM C-128
Revised 5/1/57

HOBBS OFFICE O. C. C.

SEE INSTRUCTIONS FOR COMPLETING THIS FORM ON THE REVERSE SIDE 53 PM '63

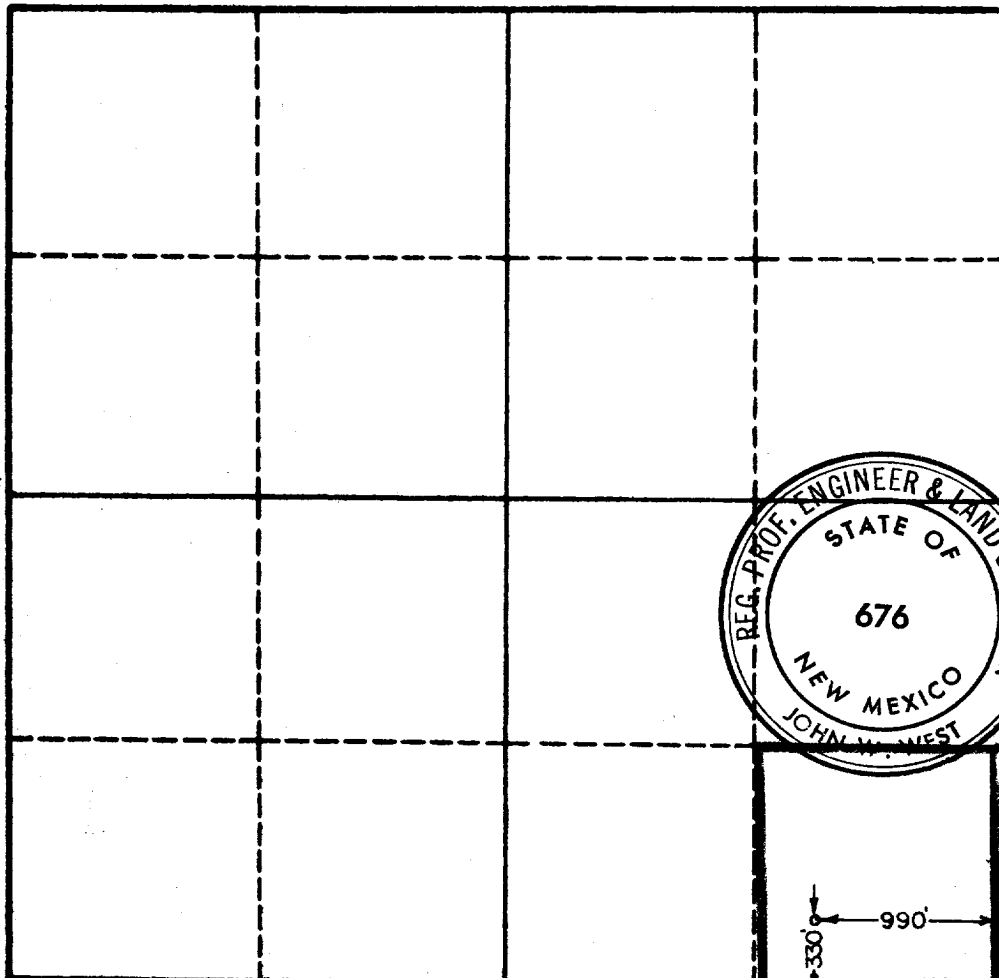
SECTION A

Operator PAN AMERICAN PET. CORP.		Lease STATE C.T.		Well No. 1
Unit Letter P	Section 3	Township 18 SOUTH	Range 34 EAST	County LEA
Actual Footage Location of Well: 330 feet from the SOUTH line and 990 feet from the EAST line				
Ground Level Elev.	Producing Formation Abo		Pool Vacuna Abo	Dedicated Acreage: 40 Acres

1. Is the Operator the only owner in the dedicated acreage outlined on the plat below? YES ☒ NO ☐ ("Owner" means the person who has the right to drill into and to produce from any pool and to appropriate the production either for himself or for himself and another. (65-3-29 (e) NMSA 1935 Comp.)
2. If the answer to question one is "no," have the interests of all the owners been consolidated by communitization agreement or otherwise? YES ☐ NO ☐ If answer is "yes," Type of Consolidation _____
3. If the answer to question two is "no," list all the owners and their respective interests below:

Owner	Land Description

SECTION B



CERTIFICATION

I hereby certify that the information in SECTION A above is true and complete to the best of my knowledge and belief.

Name Original Signed by
V. E. STALEY

Position

Area Superintendent
Company

Pan American Petroleum Corp.

Date
December 26, 1963

I hereby certify that the well location shown on the plat in SECTION B was plotted from field notes of actual surveys made by me or under my supervision, and that the same is true and correct to the best of my knowledge and belief.

Date Surveyed
12-17-63

Registered Professional Engineer
and/or Land Surveyor, **JOHN W. WEST**

Certificate No.
N. M. - P. E. & L. S. NO. 676

Count
5/30/14
Boat
Boat