

NO. OF COPIES RECEIVED
DISTRIBUTION
SANTA FE
FILE
U.S.G.S.
LAND OFFICE
OPERATOR

NEW MEXICO OIL CONSERVATION COMMISSION

Form C-101
Revised 1-4-65

5A. Indicate Type of Lease
STATE [X] FEE [ ]
5. State Oil & Gas Lease No.
B-1306-1

APPLICATION FOR PERMIT TO DRILL, DEEPEN, OR PLUG BACK

1a. Type of Work
DRILL [X] DEEPEN [ ] PLUG BACK [ ]
b. Type of Well
OIL WELL [X] GAS WELL [ ] OTHER [ ]
SINGLE ZONE [X] MULTIPLE ZONE [ ]

2. Name of Operator
TEXACO Inc.

3. Address of Operator
P. O. Box 3109, Midland, Texas

4. Location of Well
UNIT LETTER B LOCATED 330 FEET FROM THE North LINE
AND 2135 FEET FROM THE East LINE OF SEC. 6 TWP. 18-S RGE. 35-E NMPM

7. Unit Agreement Name

8. Farm or Lease Name
St. of N. Mex. "R" NCT-1

9. Well No.
10

10. Field and Pool, or Wildcat
Vacuum Glorieta

12. County
Lea

19. Proposed Depth
6150'
19A. Formation
Glorieta
20. Rotary or C.T.
Rotary

21. Elevations (Show whether DF, RT, etc.)
GR 3966'
21A. Kind & Status Plug. Bond
\$10,000 blanket
21B. Drilling Contractor
Unknown at present
22. Approx. Date Work will start
At once

23. PROPOSED CASING AND CEMENT PROGRAM

Table with 6 columns: SIZE OF HOLE, SIZE OF CASING, WEIGHT PER FOOT, SETTING DEPTH, SACKS OF CEMENT, EST. TOP. Row 1: 13-3/4", 10-3/4", 32.75, 21.63, 1475', 1000 \*, 1460'.

9-7/8" to 3350' 7-5/8" intermediate casing will be set only if gas hampers drilling operations.

6-3/4" 2-7/8" 6.5# 6150' 1000 \*\*

\* Cement with 600 sacks Incor 8% gel followed by 400 sacks Incor 4% gel. Displace plug with acetic acid.
\*\* Install centralizers over pay and on first three joints above pay. Cement with 600 sacks Incor 8% gel, followed by 400 sacks Incor 4% gel. Displace plug with acetic acid.

FORMATION TOPS EXPECTED
Anhydrite 1460'
Top of salt 1630'
Base of salt 2665'
Yates 2825'
San Andres 4290'
Glorieta 5900'
Total Depth 6150'

Completion to be through perforations with acid for stimulation.

IN ABOVE SPACE DESCRIBE PROPOSED PROGRAM; IF PROPOSAL IS TO DEEPEN OR PLUG BACK, GIVE DATA ON PRESENT PRODUCTIVE ZONE AND PROPOSED NEW PRODUCTIVE ZONE. GIVE BLOWOUT PREVENTER PROGRAM, IF ANY.

I hereby certify that the information above is true and complete to the best of my knowledge and belief.
Signed [Signature] Title Division Civil Engineer Date 1/7/65

APPROVED BY [Signature] TITLE DATE

CONDITIONS OF APPROVAL, IF ANY:
into [Signature]

**NEW MEXICO OIL CONSERVATION COMMISSION  
WELL LOCATION AND ACREAGE DEDICATION PLAT**

Form C-102  
Supersedes C-128  
Effective 1-1-65

All distances must be from the outer boundaries of the Section.

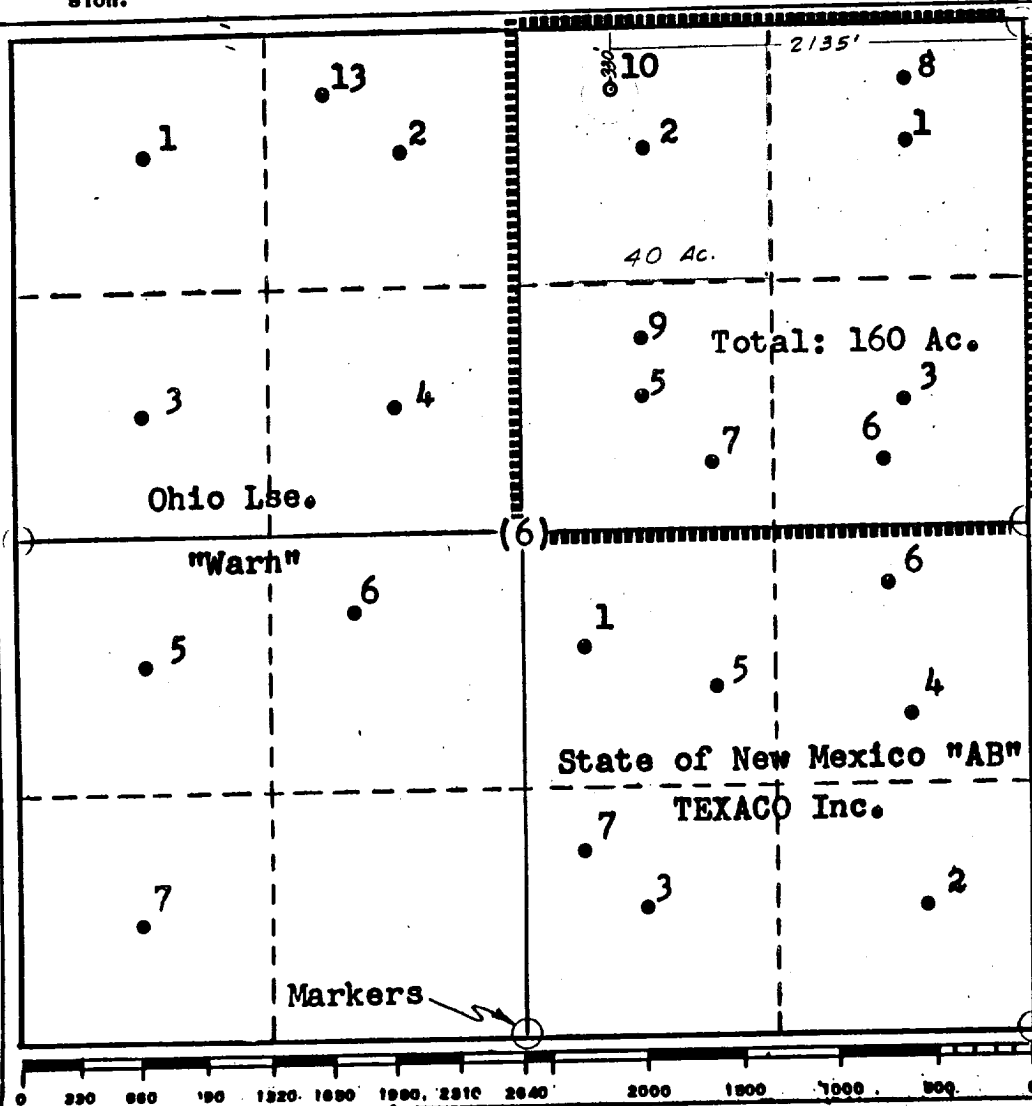
Operator <b>TEXACO Inc.</b>			Lease <b>State of New Mexico "R" NCT-1</b>		Well No. <b>10</b>
Unit Letter <b>B</b>	Section <b>6</b>	Township <b>18 South</b>	Range <b>35 East</b>	County <b>Lea</b>	
Actual Footage Location of Well: <b>330</b> feet from the <b>North</b> line and <b>2135</b> feet from the <b>East</b> line <b>Sac. 6</b>					
Ground Level Elev: <b>3966</b>	Producing Formation <b>Glorieta</b>	Pool <b>Vacuum Glorieta</b>		Dedicated Acreage <b>40</b> Acres	

1. Outline the acreage dedicated to the subject well by colored pencil or hatchure marks on the plat below.
2. If more than one lease is dedicated to the well, outline each and identify the ownership thereof (both as to working interest and royalty).
3. If more than one lease of different ownership is dedicated to the well, have the interests of all owners been consolidated by communitization, unitization, force-pooling, etc?

☐ Yes   ☐ No   If answer is "yes," type of consolidation \_\_\_\_\_

If answer is "no," list the owners and tract descriptions which have actually been consolidated. (Use reverse side of this form if necessary.) \_\_\_\_\_

No allowable will be assigned to the well until all interests have been consolidated (by communitization, unitization, forced-pooling, or otherwise) or until a non-standard unit, eliminating such interests, has been approved by the Commission.



**CERTIFICATION**

I hereby certify that the information contained herein is true and complete to the best of my knowledge and belief.

Name J. J. Velten  
 Position Division Civil Engineer  
 Company TEXACO Inc.  
 Date 1/7/65

I hereby certify that the well location shown on this plat was plotted from field notes of actual surveys made by me or under my supervision, and that the same is true and correct to the best of my knowledge and belief.

Date Surveyed 1/6/65  
 Registered Professional Engineer and/or Land Surveyor J. J. Velten  
 Certificate No. 8174