

NEW MEXICO OIL CONSERVATION COMMISSION
WELL LOCATION AND ACREAGE DEDICATION PLAT
HOBBS OFFICE O. C. C.

Form C-102
Supersedes C-128
Effective 1-1-65

HOBBS OFFICE O. C. C.

| | | | | | | | |
|-------------------------------------|---------------------|-----------------------------|-------------------------|----------------------|--|---------------------------|--|
| Operator PENNZOIL COMPANY | | FEB 15 11 51 AM '67 | | MOBIL STATE | | FEB 13 7 43 AM '67 | |
| Unit Letter G | Section 3 | Township 17 SOUTH | Range 34 EAST | County LEA | | | |

Actual Footage Location of Well:

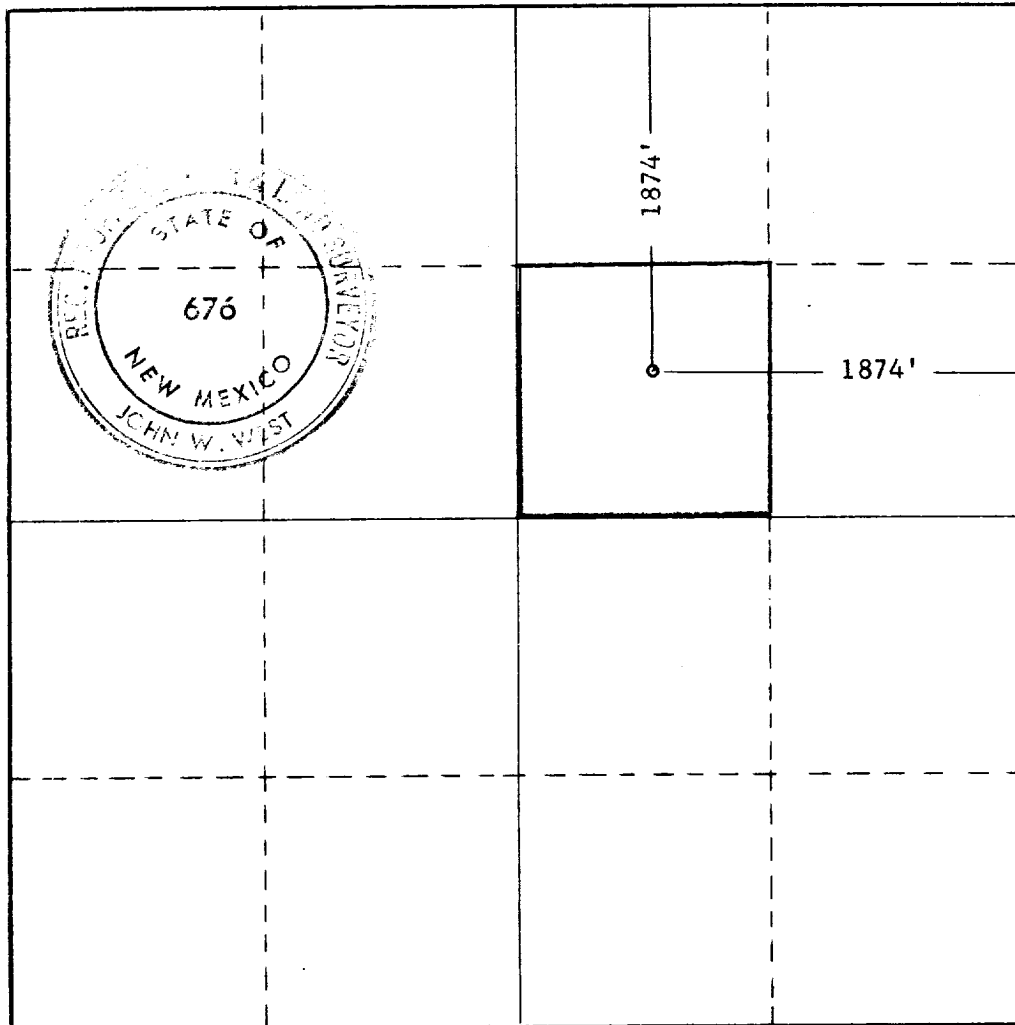
| | | | |
|--|--|-------------------------------------|---------------------------------------|
| 1874 feet from the NORTH line and | | 1874 feet from the EAST line | |
| Ground Level Elev. 4065.5 | Producing Formation Lower Wolfcamp | Pool Undesignated | Dedicated Acreage: 40 Acres |

1. Outline the acreage dedicated to the subject well by colored pencil or hachure marks on the plat below.
2. If more than one lease is dedicated to the well, outline each and identify the ownership thereof (both as to working interest and royalty).
3. If more than one lease of different ownership is dedicated to the well, have the interests of all owners been consolidated by communitization, unitization, force-pooling, etc?

☐ Yes ☐ No If answer is "yes," type of consolidation _____

If answer is "no," list the owners and tract descriptions which have actually been consolidated. (Use reverse side of this form if necessary.) _____

No allowable will be assigned to the well until all interests have been consolidated (by communitization, unitization, forced-pooling, or otherwise) or until a non-standard unit, eliminating such interests, has been approved by the Commission.



CERTIFICATION

I hereby certify that the information contained herein is true and complete to the best of my knowledge and belief.

Kenneth R. Huddleston
Name

Kenneth R. Huddleston

Position

Manager Drlg. & Engr.

Company

PENNZOIL COMPANY

Date

February 10, 1967

I hereby certify that the well location shown on this plat was plotted from field notes of actual surveys made by me or under my supervision, and that the same is true and correct to the best of my knowledge and belief.

Date Surveyed

FEB. 9, 1967

Registered Professional Engineer
and/or Land Surveyor

John W. West
Certificate No.

676

0 330 660 990 1320 1650 1980 2310 2640 2970 3300 3630 3960 4290 4620 4950 5280 5610 5940 6270 6600