

1cc Land. ofc. 5/19/67
2cc " 9/22/67

MEXICO OIL CONSERVATION COMMISSION
WELL LOCATION AND ACREAGE DEDICATION PLAT

Form C-102
Supersedes C-120
Effective 1-1-65

All distances must be from the outer boundaries of the Section.

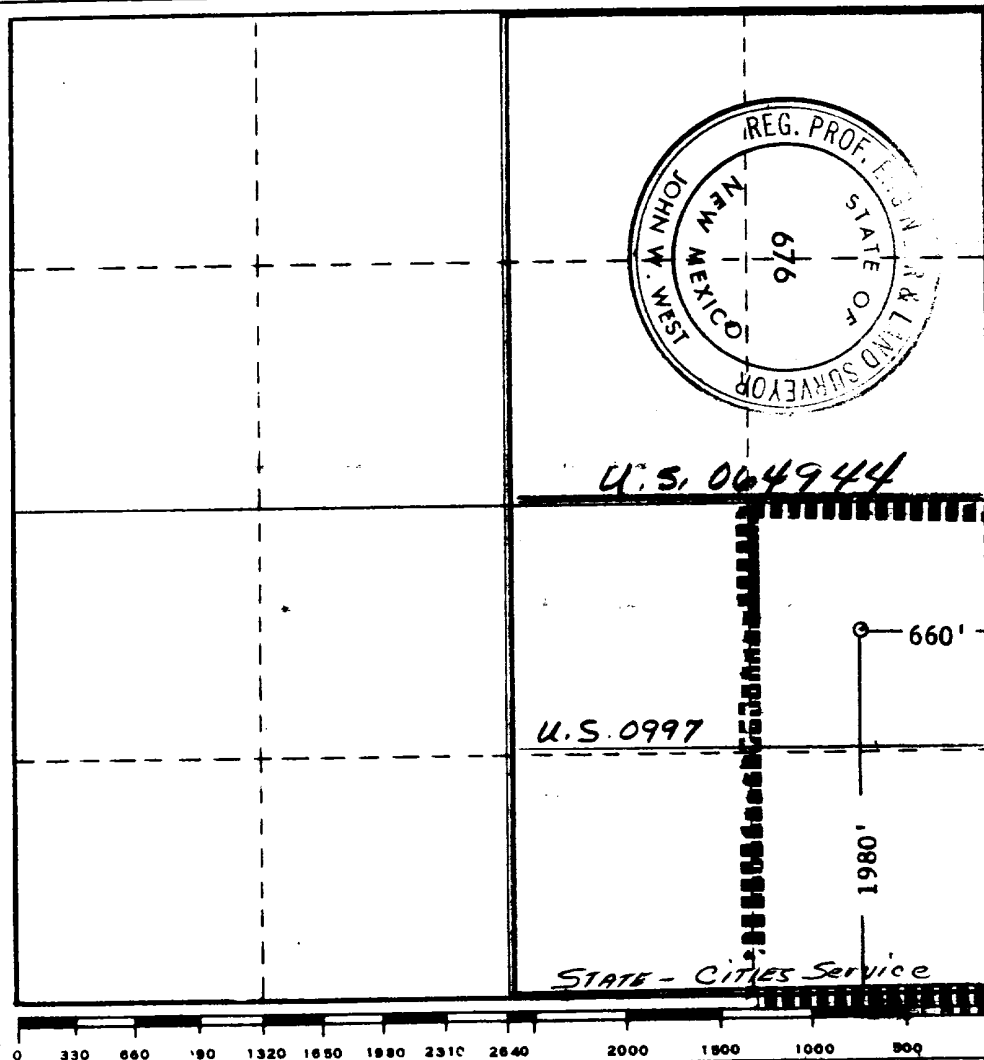
Owner Southland Royalty Company			Lease FED. MA		Well No. 2
Unit Letter I	Section 21	Township 18 SOUTH	Range 33 EAST	County LEA	
Actual Footage Location of Well: 1980 feet from the SOUTH line and 660 feet from the EAST line					
Ground Level Elev. 3825.9	Producing Formation Narrow		Pool South Corbin		Dedicated Acreage: 80 Acres

1. Outline the acreage dedicated to the subject well by colored pencil or hachure marks on the plat below.
2. If more than one lease is dedicated to the well, outline each and identify the ownership thereof (both as to working interest and royalty).
3. If more than one lease of different ownership is dedicated to the well, have the interests of all owners been consolidated by communitization, unitization, force-pooling, etc.?

☒ Yes ☐ No If answer is "yes," type of consolidation Communitized

If answer is "no," list the owners and tract descriptions which have actually been consolidated. (Use reverse side of this form if necessary.)

No allowable will be assigned to the well until all interests have been consolidated (by communitization, unitization, forced-pooling, or otherwise) or until a non-standard unit, eliminating such interests, has been approved by the Commission.



CERTIFICATION

I hereby certify that the information contained herein is true and complete to the best of my knowledge and belief.

My Cathy White
Name **Lester L. Duke**
Position **District Superintendent**

Company
Southland Royalty Company

Date
April 24, 1967

Date

I hereby certify that the well location shown on this plat was plotted from field notes of actual surveys made by me or under my supervision, and that the same is true and correct to the best of my knowledge and belief.

Date Surveyed
APRIL 4, 1967

Registered Professional Engineer and/or Land Surveyor

John W. What
Certificate No.

676

NEW MEXICO OIL CONSERVATION COMMISSION
WELL LOCATION AND ACREAGE DEDICATION PLAT

Form C-102
Supersedes C-128
Effective 1-1-65

All distances must be from the outer boundaries of the Section.

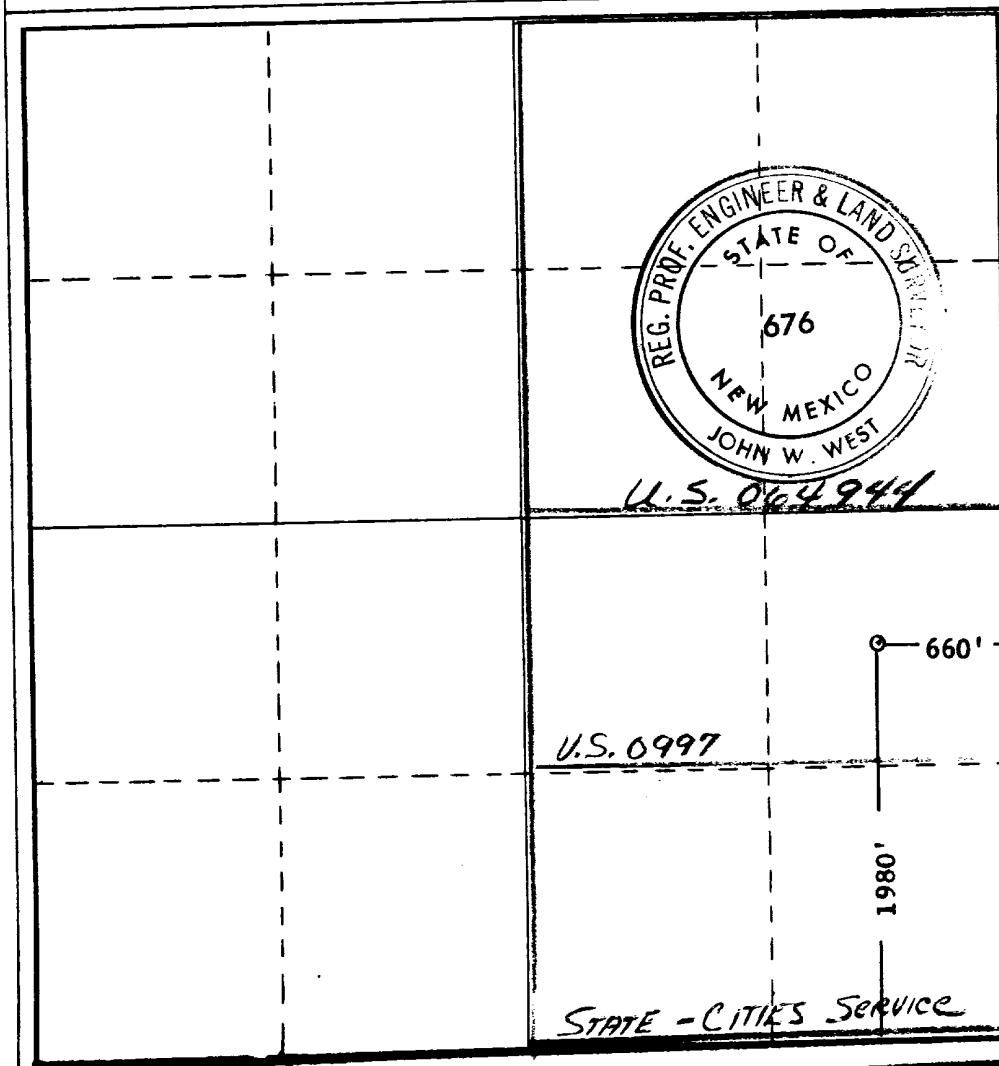
Operator AZTEC OIL & GAS COMPANY		Lease FED. MA		Well No. 2
Unit Letter I	Section 21	Township 18 SOUTH	Range 33 EAST	County LEA
Actual Footage Location of Well: 1980 feet from the SOUTH line and 660 feet from the EAST line				
Ground Level Elev. 3825.9	Producing Formation Morrow	Pool Undesignated	Dedicated Acreage: 300 Acres	

1. Outline the acreage dedicated to the subject well by colored pencil or hachure marks on the plat below.
2. If more than one lease is dedicated to the well, outline each and identify the ownership thereof (both as to working interest and royalty).
3. If more than one lease of different ownership is dedicated to the well, have the interests of all owners been consolidated by communitization, unitization, force-pooling, etc?

☒ Yes ☐ No If answer is "yes," type of consolidation **Communitized**

If answer is "no," list the owners and tract descriptions which have actually been consolidated. (Use reverse side of this form if necessary.)

No allowable will be assigned to the well until all interests have been consolidated (by communitization, unitization, forced-pooling, or otherwise) or until a non-standard unit, eliminating such interests, has been approved by the Commission.



CERTIFICATION

I hereby certify that the information contained herein is true and complete to the best of my knowledge and belief.

Original signed by:
LESTER L. DUKE

Name **Lester L. Duke**
District Superintendent

Position
Aztec Oil & Gas Company

Company
April 24, 1967

Date

I hereby certify that the well location shown on this plat was plotted from field notes of actual surveys made by me or under my supervision, and that the same is true and correct to the best of my knowledge and belief.

Date Surveyed
APRIL 4, 1967

Registered Professional Engineer and/or Land Surveyor

John W. West
Certificate No. **676**