

NEW MEXICO OIL CONSERVATION COMMISSION
WELL LOCATION AND ACREAGE DEDICATION PLAT

Form C-102
Supersedes C-128
Effective 1-1-65

All distances must be from the outer boundaries of the Section.

Operator Mobil Oil Corporation			Lease Bridges State 59 AM '67		Well No. 121
Unit Letter L	Section 13	Township 17 S	Range 34 E	County Lea	
Actual Footage Location of Well: 1830 feet from the South line and 760 feet from the West line					
Ground Level Elev. 4017'	Producing Formation Wolfcamp & Upper Penn		Pool Undesignated	Dedicated Acreage 80 Acres	

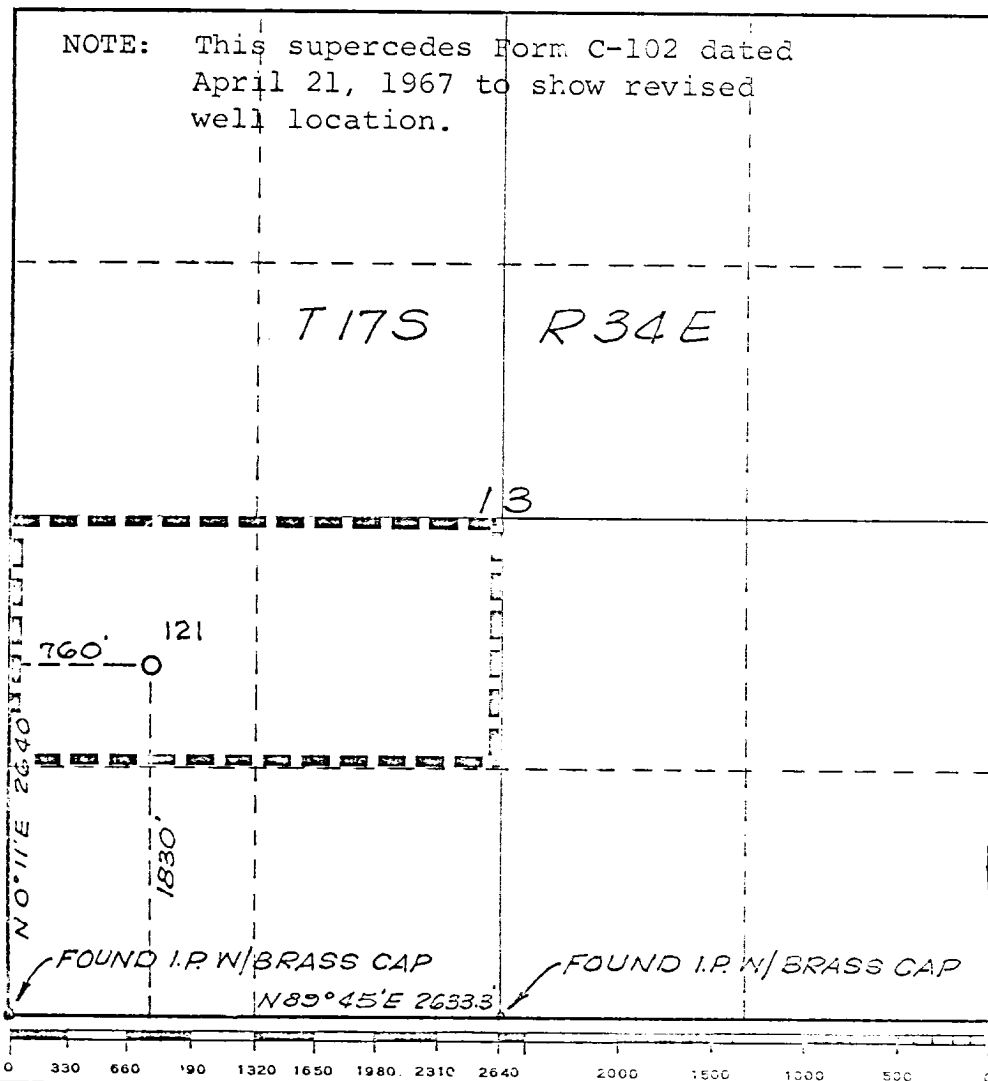
1. Outline the acreage dedicated to the subject well by colored pencil or hachure marks on the plat below.
2. If more than one lease is dedicated to the well, outline each and identify the ownership thereof (both as to working interest and royalty).
3. If more than one lease of different ownership is dedicated to the well, have the interests of all owners been consolidated by communitization, unitization, force-pooling, etc?

☐ Yes ☐ No If answer is "yes," type of consolidation _____

If answer is "no," list the owners and tract descriptions which have actually been consolidated. (Use reverse side of this form if necessary.) _____

No allowable will be assigned to the well until all interests have been consolidated (by communitization, unitization, forced-pooling, or otherwise) or until a non-standard unit, eliminating such interests, has been approved by the Commission.

NOTE: This supercedes Form C-102 dated April 21, 1967 to show revised well location.

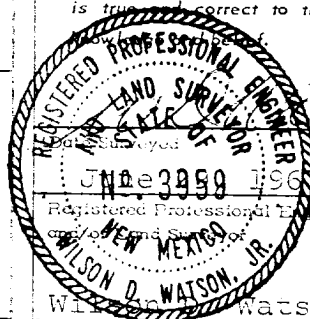


CERTIFICATION

I hereby certify that the information contained herein is true and complete to the best of my knowledge and belief.

Name
B. J. Tibbets
Position
Prod. Engrg. Supervisor
Company
Mobil Oil Corporation
Date

I hereby certify that the well location shown on this plat was plotted from field notes of actual surveys made by me or under my supervision, and that the same is true and correct to the best of my knowledge.



Wilson D. Watson, Jr.
Certificate No.
3959