

NEW MICO OIL CONSERVATION COMMISSION
WELL LOCATION AND ACREAGE DEDICATION PLAT

Form C-102
Supersedes C-125
Effective 1-1-65

All distances must be from the outer boundaries of the Section.

U. C.

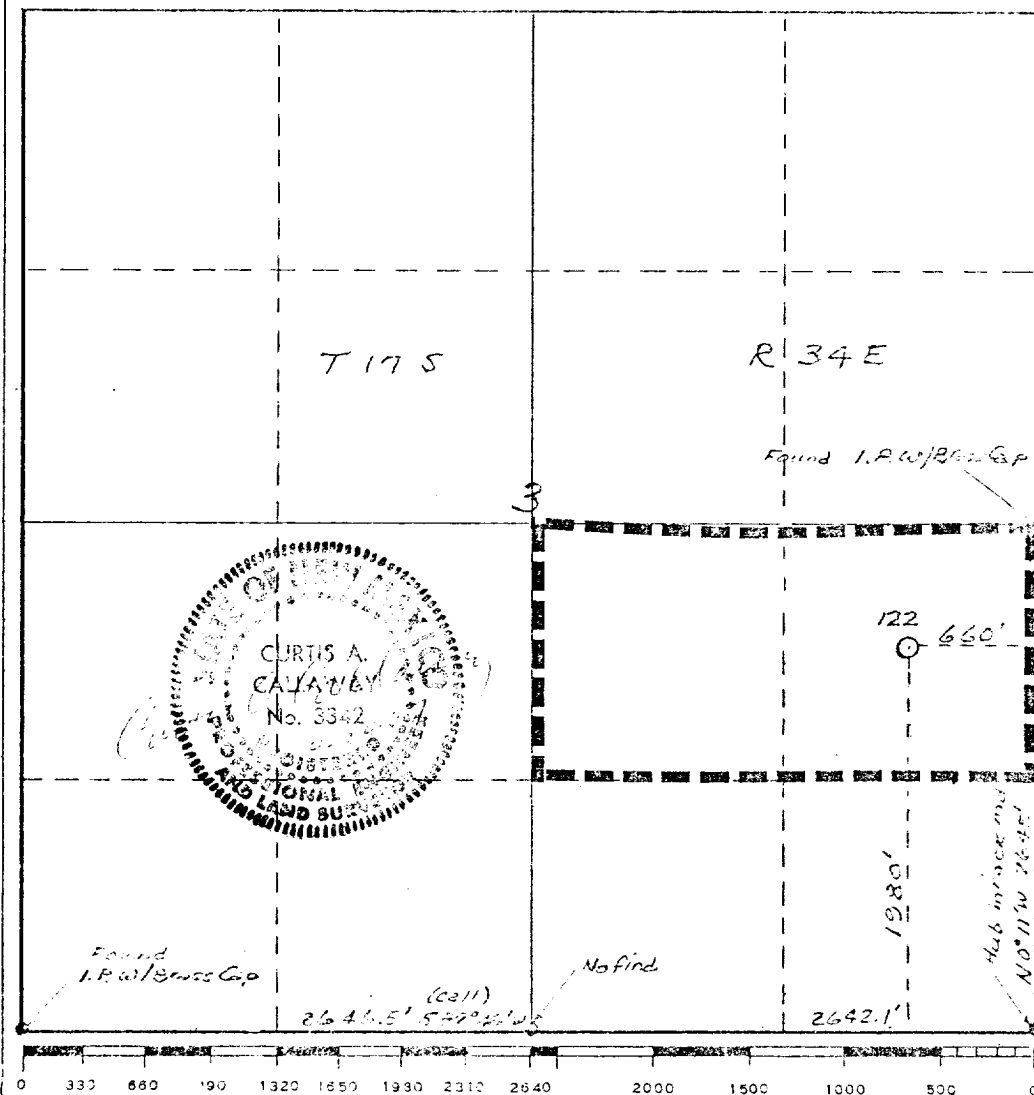
Operator Mobil Oil Corporation			Lease Bridges State 119 34E '67		Well No. 122
Unit Letter I	Section 3	Township 17S	Range 34E	County Lea	
Actual Plotting Location of Well:					
1980 feet from the		South	line and	660 feet from the	East line
Ground Level Elev. 4,059'	Producing Formation Wolfcamp		Pool Undesignated		Dedicated Acreage 80 Acres

1. Outline the acreage dedicated to the subject well by colored pencil or hatchure marks on the plat below.
2. If more than one lease is dedicated to the well, outline each and identify the ownership thereof (both as to working interest and royalty).
3. If more than one lease of different ownership is dedicated to the well, have the interests of all owners been consolidated by communitization, unitization, force-pooling, etc?

☐ Yes ☐ No If answer is "yes," type of consolidation _____

If answer is "no," list the owners and tract descriptions which have actually been consolidated. (Use reverse side of this form if necessary.) _____

No allowable will be assigned to the well until all interests have been consolidated (by communitization, unitization, forced-pooling, or otherwise) or until a non-standard unit, eliminating such interests, has been approved by the Commission.



CERTIFICATION

I hereby certify that the information contained herein is true and complete to the best of my knowledge and belief.

B. J. Tibbets
B. J. Tibbets

Position
Operations Engineer

Company
Mobil Oil Corporation

Date
April 21, 1967

I hereby certify that the well location shown on this plat was plotted from field notes of actual surveys made by me or under my supervision, and that the same is true and correct to the best of my knowledge and belief.

Date Surveyed
April 20, 1967

Registered Professional Engineer and/or Land Surveyor

C. A. Callaway
C. A. Callaway

Certificate No.
3342