

NEW MEXICO OIL CONSERVATION COMMISSION  
WELL LOCATION AND ACREAGE DEDICATION PLAT

Form O-112  
Supersedes O-128  
Effective 1-1-65

All distances must be from the outer boundaries of the Section.

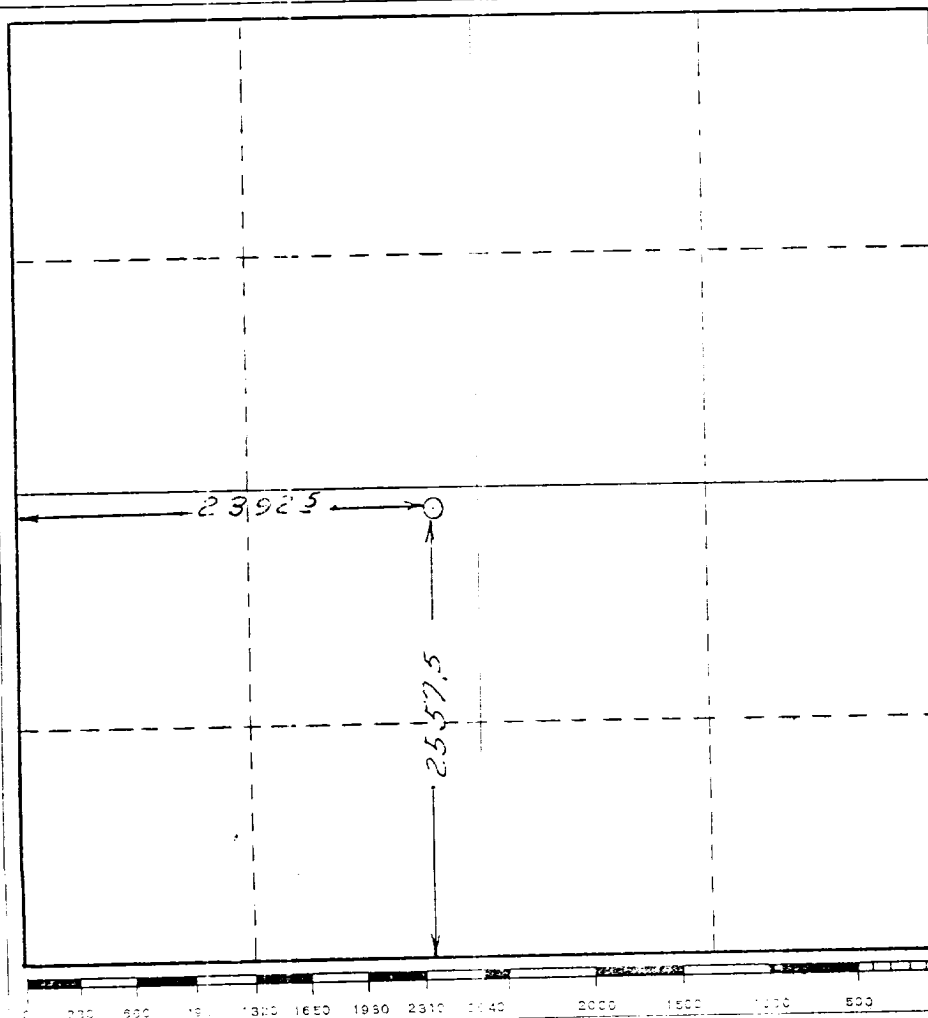
Operator <b>Charles E. Seed</b>			Lease <b>State Section 30 - Seed</b>		Well No. <b>6</b>
Unit Letter <b>K</b>	Section <b>30</b>	Township <b>18S</b>	Range <b>38E</b>	County <b>Lea</b>	
Actual Footage Location of Well: <b>2392.5</b> feet from the <b>West</b> line and <b>2557.5</b> feet from the <b>South</b> line					
Ground Level Elev.	Producing Formation <b>Ogallala</b>		Pool <b>Undesignated</b>		Dedicated Acreage: <b>.625</b> Acres

1. Outline the acreage dedicated to the subject well by colored pencil or hatchure marks on the plat below.  
.625 acres is too small a tract to be outlined.
2. If more than one lease is dedicated to the well, outline each and identify the ownership thereof (both as to working interest and royalty).  
Only one lease involved.
3. If more than one lease of different ownership is dedicated to the well, have the interests of all owners been consolidated by communitization, unitization, force-pooling, etc?

☐ Yes ☐ No If answer is "yes," type of consolidation \_\_\_\_\_

If answer is "no," list the owners and tract descriptions which have actually been consolidated. (Use reverse side of this form if necessary.) \_\_\_\_\_

No allowable will be assigned to the well until all interests have been consolidated (by communitization, unitization, forced-pooling, or otherwise) or until a non-standard unit, eliminating such interests, has been approved by the Commission.



CERTIFICATION

I hereby certify that the information contained herein is true and complete to the best of my knowledge and belief.

*Charles E. Seed*  
**Charles E. Seed**

Name

**Individually Owned**

Position

Company

**September 28, 1967**

Date

I hereby certify that the well location shown on this plat was plotted from field notes of actual surveys made by me or under my supervision, and that the same is true and correct to the best of my knowledge and belief.

Date Surveyed

*September 28, 1967*  
Registered Professional Engineer  
and/or Land Surveyor

*Herschel Jones*  
**HERSHEL JONES**  
**3640**

Certificate No.

**3640**