

NEW MEXICO OIL CONSERVATION COMMISSION
WELL LOCATION AND ACREAGE DEDICATION PLAT

Form O-112
Supersedes O-128
Effective 1-1-65

All distances must be from the outer boundaries of the Section.

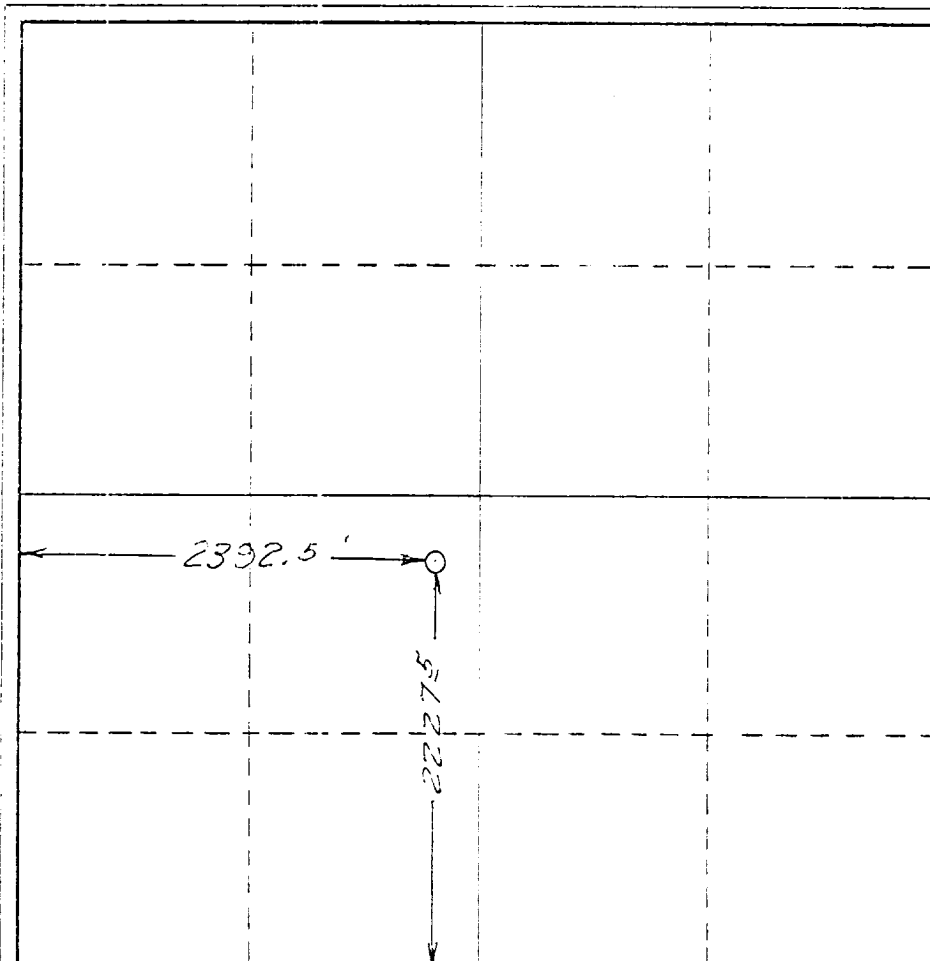
Operator Charles E. Seed		Lease State Section 30 - Seed			Well No. 8
Unit Letter K	Section 30	Township 18S	Range 38E	County Lea	
Actual Footage Location of Well: 2392.5 feet from the West line and 2227.5 feet from the South line					
Ground Level Elev.	Producing Formation Ogallala		Pool Undesignated		Dedicated Acreage .625 Acres

- Outline the acreage dedicated to the subject well by colored pencil or hatchure marks on the plat below.
.625 acres is too small a tract to be outlined.
- If more than one lease is dedicated to the well, outline each and identify the ownership thereof (both as to working interest and royalty).
Only one lease involved.
- If more than one lease of different ownership is dedicated to the well, have the interests of all owners been consolidated by communitization, unitization, force-pooling, etc?

☐ Yes ☐ No If answer is "yes," type of consolidation _____

If answer is "no," list the owners and tract descriptions which have actually been consolidated. (Use reverse side of this form if necessary.) _____

No allowable will be assigned to the well until all interests have been consolidated (by communitization, unitization, forced-pooling, or otherwise) or until a non-standard unit, eliminating such interests, has been approved by the Commission.



CERTIFICATION

I hereby certify that the information contained herein is true and complete to the best of my knowledge and belief.

Charles E. Seed
Charles E. Seed

Name

Individually Owned

Position

Company

September 28, 1967

Date

I hereby certify that the well location shown on this plat was plotted from field notes of actual surveys made by me or under my supervision, and that the same is true and correct to the best of my knowledge and belief.

Date Surveyed

September

Registered Professional Engineer and/or Land Surveyor

Herschel L. Jones
HERSCHEL L. JONES

Certificate No.

3690