

NEW MEXICO OIL CONSERVATION COMMISSION
WELL LOCATION AND ACREAGE DEDICATION PLAT

Form C-102
Supersedes C-128
Effective 1-1-65

HOODS OFFICE D. C. C.
All distances must be from the outer boundaries of the Section.

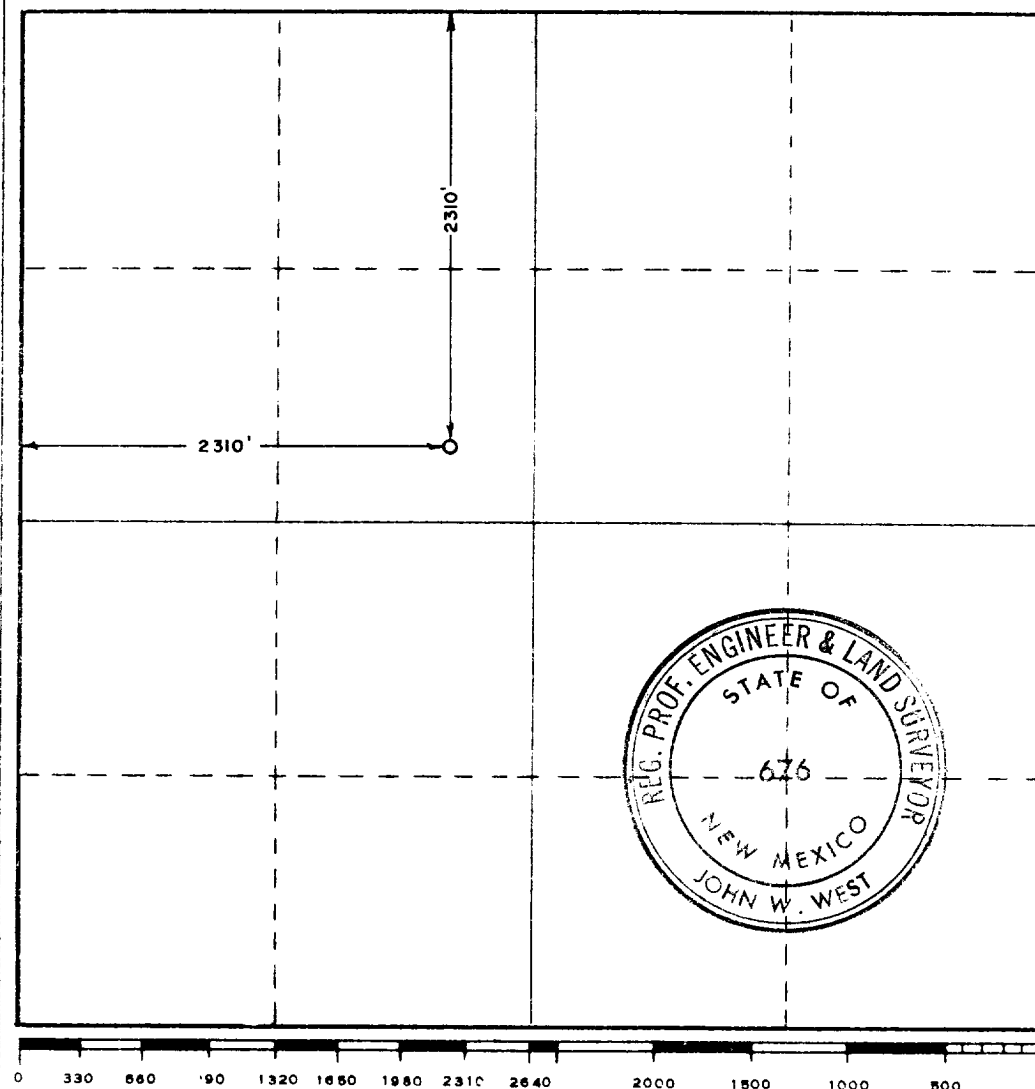
Operator MAR-WIN DEVELOPMENT COMPANY		Lease JUL 10 2 25 PM '68		Well No. 1
Unit Letter F	Section 15	Township 18 SOUTH	Range 38 EAST	County LEA COUNTY, NEW MEXICO
Actual Footage Location of Well:				
2310 feet from the NORTH line and		2310 feet from the WEST line		
Ground Level Elev.	Producing Formation San Andres	Pool Undesignated	Dedicated Acreage: SE 1/4 NW 1/4 40 Acres	

1. Outline the acreage dedicated to the subject well by colored pencil or hachure marks on the plat below.
2. If more than one lease is dedicated to the well, outline each and identify the ownership thereof (both as to working interest and royalty).
3. If more than one lease of different ownership is dedicated to the well, have the interests of all owners been consolidated by communitization, unitization, force-pooling, etc?

☐ Yes ☐ No If answer is "yes," type of consolidation _____

If answer is "no," list the owners and tract descriptions which have actually been consolidated. (Use reverse side of this form if necessary.) _____

No allowable will be assigned to the well until all interests have been consolidated (by communitization, unitization, forced-pooling, or otherwise) or until a non-standard unit, eliminating such interests, has been approved by the Commission.



CERTIFICATION

I hereby certify that the information contained herein is true and complete to the best of my knowledge and belief.

Name
S. H. Marshall Jr.

Position
President

Company
MAR-WIN DEVELOPMENT CO.

Date
July 10, 1968

I hereby certify that the well location shown on this plat was plotted from field notes of actual surveys made by me or under my supervision, and that the same is true and correct to the best of my knowledge and belief.

Date Surveyed
JUNE 19, 1968

Registered Professional Engineer and/or Land Surveyor

John W. West
Certificate No. **676**