

NEW MEXICO OIL CONSERVATION COMMISSION
WELL LOCATION AND ACREAGE DEDICATION PLAT

U.S. OFFICE D. C. C.
APR 22 11 23 AM '69

Form C-102
Supersedes C-128
Effective 1-1-65

All distances must be from the outer boundaries of the Section.

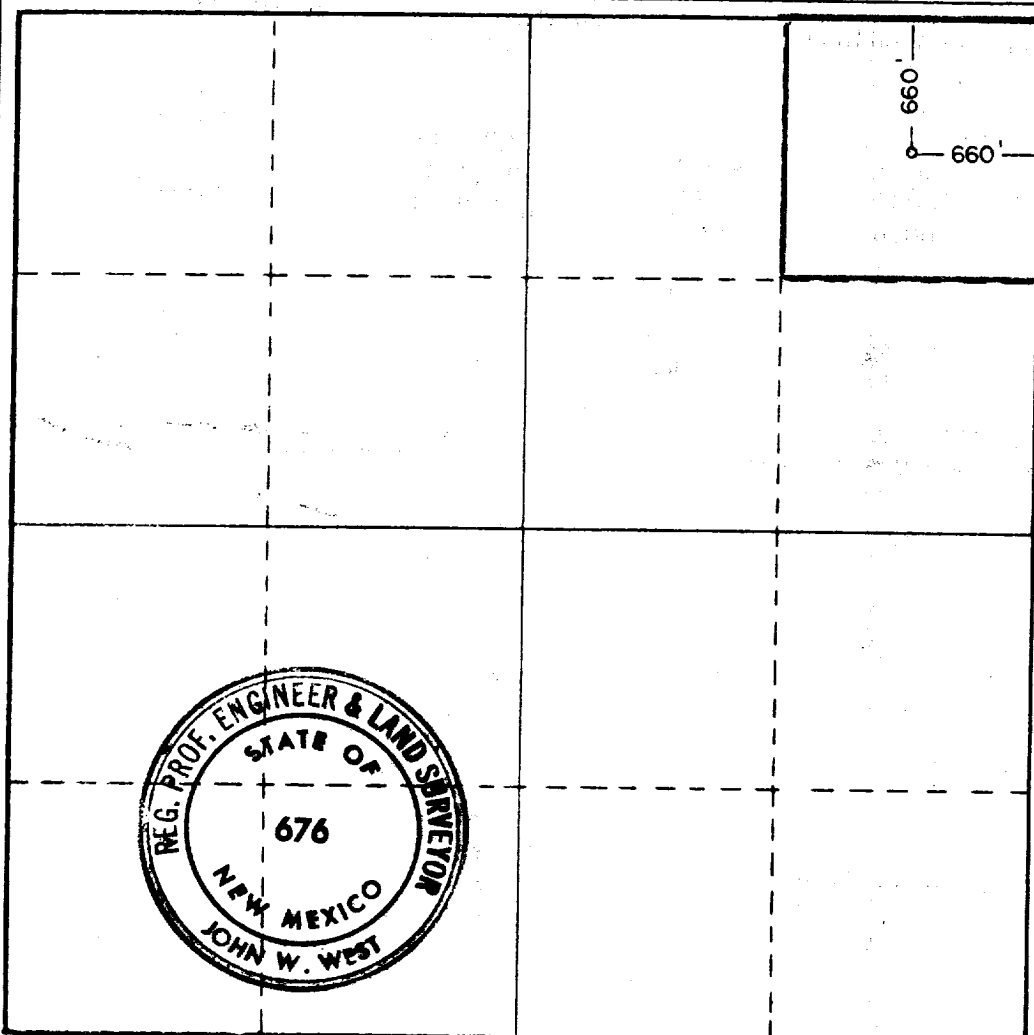
Operator AMERADA PETROLEUM CORP.		Lease STATE A		W No. 5	
Unit Letter A	Section 32	Township 18 South	Range 38 East	County Lea	
Actual Footage Location of Well: 660 feet from the North line and 660 feet from the East line					
Ground Level Elev. Unknown	Producing Formation Alibon	Pool Undesignated	Dedicated Acreage: 40 Acres		

1. Outline the acreage dedicated to the subject well by colored pencil or hatchure marks on the plat below.
2. If more than one lease is dedicated to the well, outline each and identify the ownership thereof (both as to working interest and royalty).
3. If more than one lease of different ownership is dedicated to the well, have the interests of all owners been consolidated by communitization, unitization, force-pooling, etc?

☐ Yes ☒ No If answer is "yes," type of consolidation _____

If answer is "no," list the owners and tract descriptions which have actually been consolidated. (Use reverse side of this form if necessary.) _____

No allowable will be assigned to the well until all interests have been consolidated (by communitization, unitization, forced-pooling, or otherwise) or until a non-standard unit, eliminating such interests, has been approved by the Commission.



CERTIFICATION

I hereby certify that the information contained herein is true and complete to the best of my knowledge and belief.

Name
G. G. Webb
Position
District Superintendent
Company
Amerada Petroleum Corp.

Date
April 23, 1969

I hereby certify that the well location shown on this plat was plotted from field notes of actual surveys made by me or under my supervision, and that the same is true and correct to the best of my knowledge and belief.

Date Surveyed
April 18, 1969

Registered Professional Engineer and/or Land Surveyor

John W. West

Certificate No. **676**

0 320 640 960 1280 1600 1920 2240 2560 2000 1500 1000 500 0